

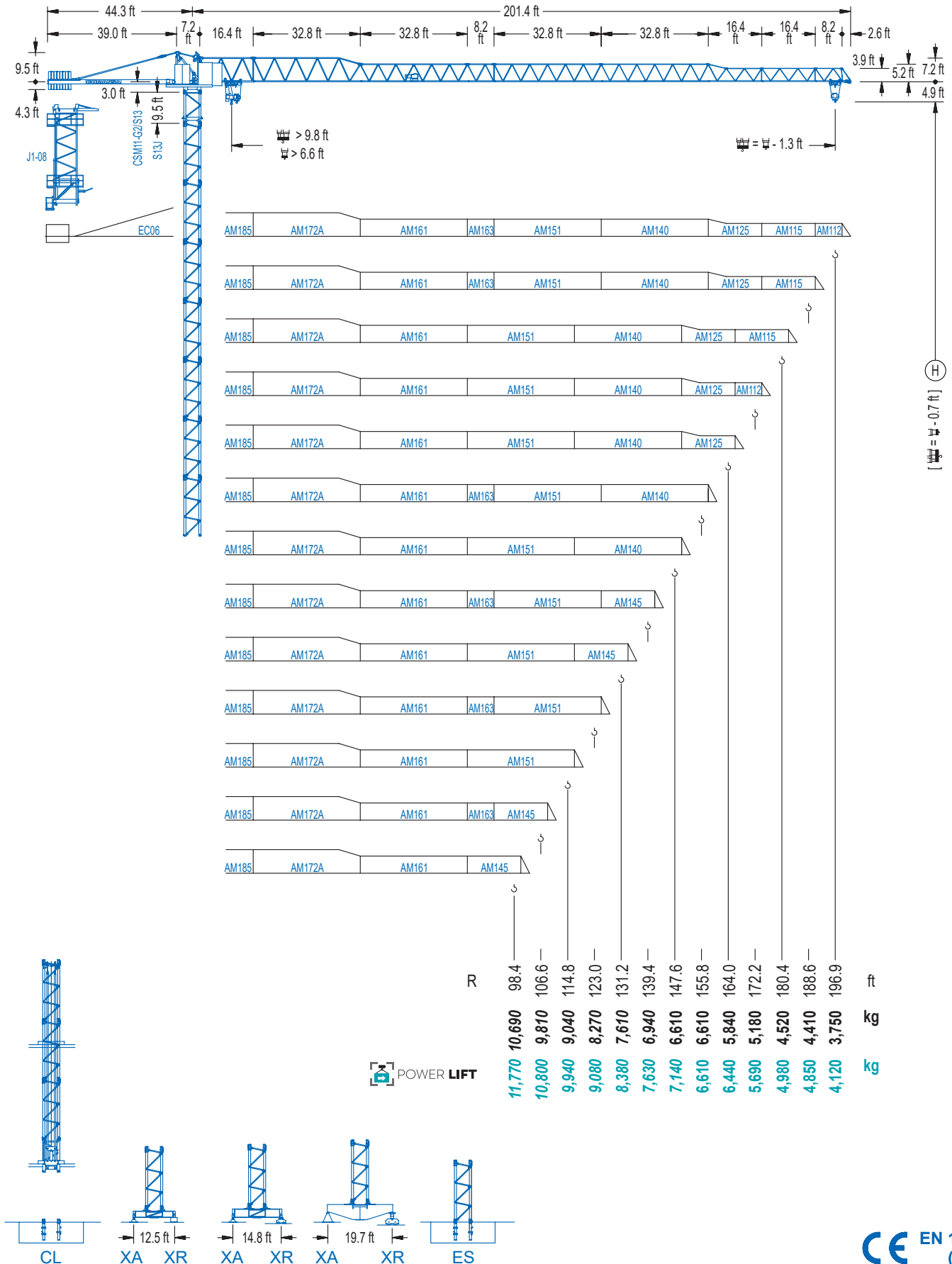


**COMANSA**

**1100 Series**

**11 LC 150**

**DT 13,230 lb**

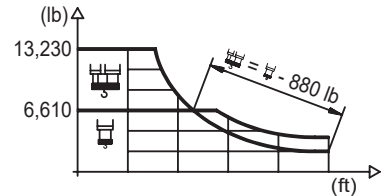


**1100 Series**

## DIAGRAMA DE CARGAS

Load chart / Diagramme de charges / Lastdiagramm / Diagramma di carico / Диаграмма распределения нагрузки

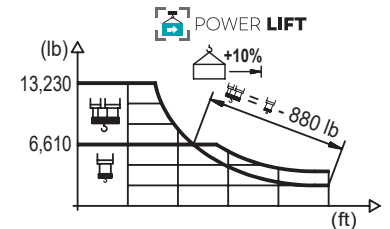
R (ft)	H								L									
196.9	62.3	75.5	82.0	91.9	98.4	106.6	109.6	122.0	131.2	139.4	147.6	155.8	164.0	172.2	180.4	188.6	196.9	ft
	13,230	10,520	9,500	8,270	7,580	6,830	6,610	6,610	6,080	5,670	5,290	4,980	4,670	4,410	4,170	3,950	3,750	lb
188.6	67.9	75.5	82.0	91.9	98.4	106.6	114.8	119.4	133.5	139.4	147.6	155.8	164.0	172.2	180.4	188.6		ft
	13,230	11,680	10,560	9,190	8,440	7,650	6,940	6,610	6,610	6,280	5,890	5,530	5,200	4,920	4,650	4,410		lb
180.4	66.3	75.5	82.0	91.9	98.4	106.6	114.8	116.5	130.2	139.4	147.6	155.8	164.0	172.2	180.4			ft
	13,230	11,330	10,250	8,930	8,200	7,410	6,750	6,610	6,610	6,130	5,730	5,380	5,070	4,780	4,520			lb
172.2	70.9	75.5	82.0	91.9	98.4	106.6	114.8	123.0	124.3	139.4	147.6	155.8	164.0	172.2				ft
	13,230	12,260	11,110	9,680	8,910	8,050	7,340	6,700	6,610	6,610	6,190	5,820	5,490	5,180				lb
164.0		74.5	82.0	91.9	98.4	106.6	114.8	123.0	128.0	131.2	147.3	155.8	164.0					ft
		13,230	11,790	10,320	9,480	8,600	7,830	7,190	6,830	6,610	6,610	6,190	5,840					lb
155.8			78.7	91.9	98.4	106.6	114.8	123.0	131.2	137.8	138.5	155.8						ft
			13,230	11,000	10,120	9,190	8,380	7,690	7,100	6,660	6,610	6,610						lb
147.6			82.0	91.9	98.4	106.6	114.8	123.0	131.2	144.4	147.6							ft
			13,230	11,550	10,630	9,660	8,820	8,090	7,470	6,610	6,610							lb
139.4			81.4	91.9	98.4	106.6	114.8	123.0	131.2	138.0								ft
			13,230	11,460	10,560	9,570	8,750	8,020	7,410	6,940								lb
131.2			82.3	91.9	98.4	106.6	114.8	123.0	129.8									ft
			13,230	11,600	10,670	9,700	8,860	8,130	7,610									lb
123.0			82.3	91.9	98.4	106.6	114.8	121.6										ft
			13,230	11,620	10,690	9,720	8,880	8,270										lb
114.8			82.3	91.9	98.4	106.6	113.4											ft
			13,230	11,640	10,740	9,740	9,040											lb
106.6			81.7	91.9	98.4	105.2												ft
			13,230	11,550	10,630	9,810												lb
98.4			81.0	91.9	97.0													ft
			13,230	11,420	10,690													lb



## DIAGRAMA DE CARGAS POWERLIFT

Load chart PowerLift / Diagramme de charges PowerLift / Lastdiagramm PowerLift / Diagramma di carico PowerLift / Диаграмма распределения нагрузки PowerLift

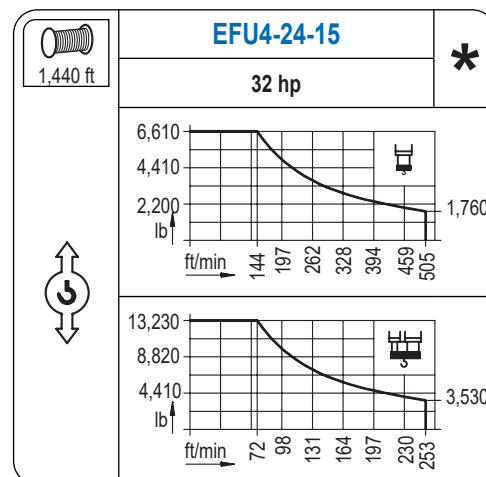
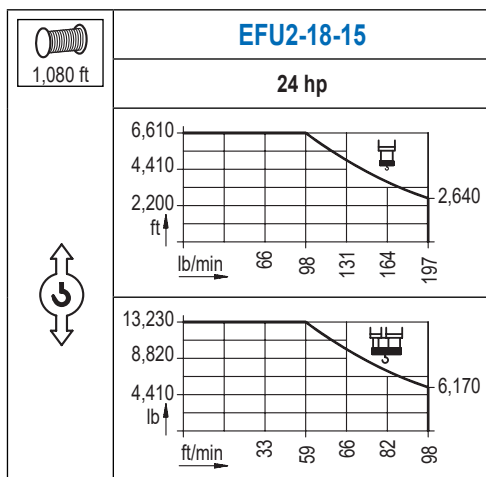
R (ft)	H								L									
196.9	67.3	72.2	82.0	88.6	98.4	106.6	114.8	118.1	131.9	139.4	147.6	155.8	164.0	172.2	180.4	188.6	196.9	ft
	13,230	12,150	10,410	9,480	8,330	7,540	6,860	6,610	6,610	6,190	5,800	5,450	5,140	4,850	4,590	4,340	4,120	lb
188.6		73.5	82.0	88.6	98.4	106.6	114.8	123.0	128.9	144.7	147.6	155.8	164.0	172.2	180.4	188.6		ft
		13,230	11,600	10,560	9,300	8,420	7,670	7,030	6,610	6,610	6,460	6,060	5,710	5,400	5,110	4,850		lb
180.4		71.5	82.0	88.6	98.4	106.6	114.8	123.0	126.0	141.1	147.6	155.8	164.0	172.2	180.4			ft
		13,230	11,270	10,270	9,040	8,180	7,450	6,810	6,610	6,610	6,280	5,910	5,560	5,250	4,980			lb
172.2		76.4	82.0	88.6	98.4	106.6	114.8	123.0	131.2	134.8	151.2	155.8	164.0	172.2				ft
		13,230	12,190	11,130	9,810	8,880	8,110	7,430	6,860	6,610	6,610	6,390	6,040	5,690				lb
164.0			80.7	88.6	98.4	106.6	114.8	123.0	131.2	139.4	142.4	160.1	164.0					ft
			13,230	11,860	10,450	9,480	8,660	7,960	7,340	6,790	6,610	6,610	6,440					lb
155.8			84.3	88.6	98.4	106.6	114.8	123.0	131.2	139.4	149.0	155.8						ft
			13,230	12,500	11,020	10,010	9,150	8,420	7,760	7,190	6,610	6,610						lb
147.6			88.3	98.4	106.6	114.8	123.0	131.2	139.4	146.2								ft
			13,230	11,620	10,560	9,660	8,880	8,200	7,610	7,140								lb
139.4			87.6	98.4	106.6	114.8	123.0	131.2	138.0									ft
			13,230	11,530	10,490	9,590	8,820	8,130	7,630									lb
131.2			88.6	98.4	106.6	114.8	123.0	129.8										ft
			13,230	11,680	10,630	9,720	8,950	8,380										lb
123.0			88.9	98.4	106.6	114.8	121.6											ft
			13,230	11,730	10,670	9,740	9,080											lb
114.8			89.2	98.4	106.6	113.4												ft
			13,230	11,770	10,710	9,940												lb
106.6			88.6	98.4	105.2													ft
			13,230	11,680	10,800													lb
98.4			87.9	97.0														ft
			13,230	11,770														lb



Datos válidos hasta 328 ft de ABG. Para alturas mayores consultar / Valid data up to 328 ft HUH. Additional heights on request / Données valables jusqu'à 328 ft HSC. Pour des autres hauteurs, merci de nous consulter / Gültige Daten bis zu 328 ft HH. Bei höheren Hakenhöhen nachfragen / Dati validi fino a 328 ft ASG. Per altezze superiori consultare Comansa / Допустимые данные до 328 фут ВПК. Для более высоких высот консультируйтесь


## MECANISMOS

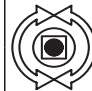
Mechanisms / Mécanismes / Antriebe / Meccanismi / Механизмы

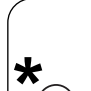


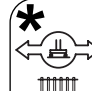
## MECANISMOS

Mechanisms / Mécanismes / Antriebe / Meccanismi / Механизмы

	<b>CFU-4.0</b>
	<b>5.4 hp</b>
0 ⇔ 262 ft/min	

	<b>GFU-5.5</b>
	<b>2x 7.4 hp</b>
0 ⇔ 0,7 rpm	

	<b>TS2-5.5</b>
	<b>2x 40 ft·lb</b>
	78 ft/min
	<b>1XR51 3XR51</b>

	<b>TRA-7.5</b>
	<b>2x 55 ft·lb</b>
	78 ft/min
	<b>5XR71</b>

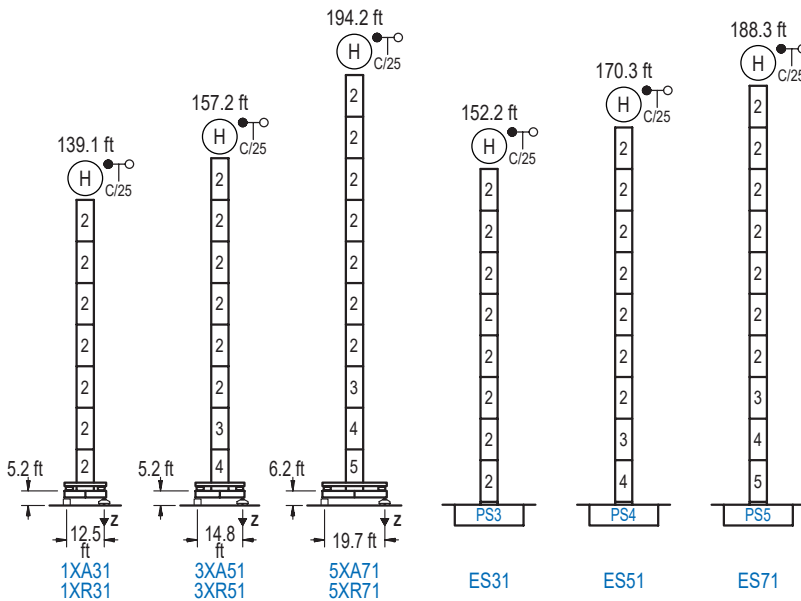
Elevación / Hoist / Levege / Hub / Sollevamento / Тип механизма (подъем)	Carro / Trolley / Chariot / Laufkatze / Carrelo / Грузовая тележка	Giro / Slewing / Rotation / Drehbewegung / Rotazione / Поворот	Traslación / Travel / Translation / Verfahrbewegung / Traslazione / Ход	Tensión de alimentación / Operating voltage / Tension de service / Betriebsspannung / Tensione di alimentazione / Напряжение источника питания	Potencia requerida / Required power / Puissance requise / Benötigte Leistung / Potenza richiesta / требуемая мощность
EFU2-18-15	CFU-4.0	(2x) GFU-5.5	(2x) TS2-5.5 (2x) TRA-7.5	480 V 3ph 60 Hz	29 kVA
EFU4-24-15					36 kVA

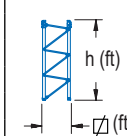
Opcional / Optional / En option / Kaufoption / Opzionale / Опционально
<b>*</b>

## ALTURAS BAJO GANCHO

Heights under hook / Hauteurs sous crochet / Hakenhöhen / Altezza sotto gancio / Высота под крюком

∅ 5.2 ft

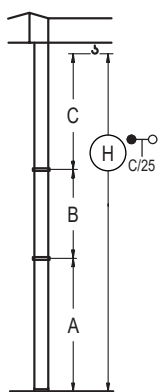


	n°	Ref.	∅	h
	2	S13	5.2	18.0
	3	TS14	5.2	18.0
	4	S14	5.2	18.0
	5	TS15	5.2	18.0
	6	S15	5.2	18.0
	1x S13 = 1x S13M			
	1x S15 = 1x S15M			

<b>Z máx.</b>	En servicio / In operation / En service / In Betrieb / In servizio / При работе	1XR31.. 154 kip 3XR51.. 152 kip 5XR71.. 152 kip
	Fuera de servicio / Out of service / Hors service / Ausser Betrieb / Fuori servizio / В стационарном состоянии	1XR31.. 146 kip 3XR51.. 165 kip 5XR71.. 205 kip

## GRÚA ARRIOSTRADA

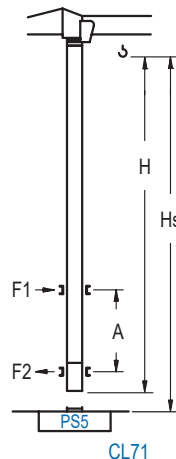
Braced crane / Grue à entretoisement / Abgespannter Kran / Gru ancorata / Нарастиваемый кран

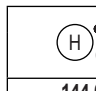


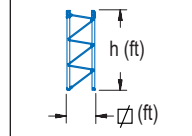
	1XA31	3XA51	5XA71
A max	95.5	113.5	150.6
A min	59.4	59.4	96.5
B max	-	72.2	72.2
B min	-	54.1	54.1
C max	115.8	115.8	115.8
H max	211.3	283.5	229.3
	ES31	ES51	ES71
A max	108.6	126.6	144.7
A min	54.5	72.5	90.6
B max	-	72.2	72.2
B min	-	54.1	54.1
C max	115.8	115.8	115.8
H max	224.4	296.6	242.5

## GRÚA TREPADORA

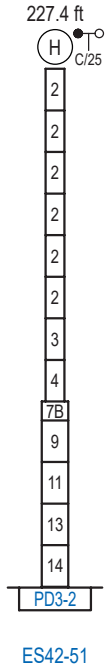
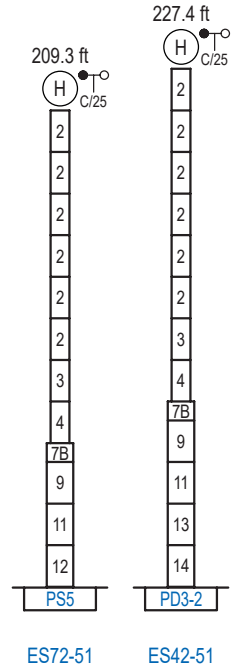
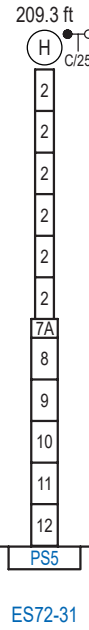
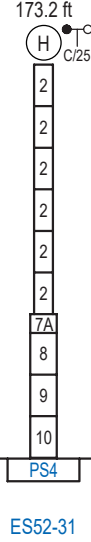
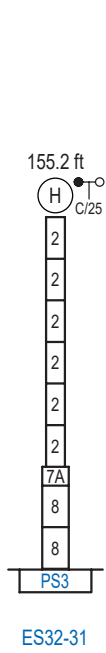
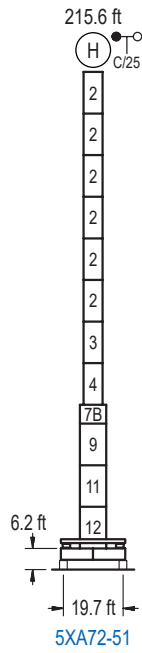
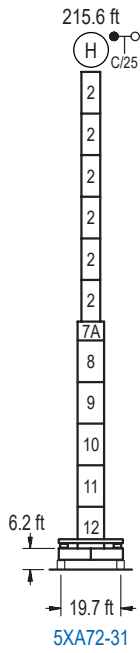
Internal climbing crane / Grue avec cage de télescopage intérieure / Kran mit klettern im Gebäude / Gru in rampante in cavedio / Кран с самоподъемом



	Hs < 1,310 ft	
	A max (ft)	A min (ft)
<b>144.0 ft</b> S13J + 5x S13 + TS14 + TS15 + CLS15-08	55.1	36.1
<b>126.0 ft</b> S13J + 4x S13 + TS14 + TS15 + CLS15-08	46.3	29.5
<b>107.9 ft</b> S13J + 3x S13 + TS14 + TS15 + CLS15-08	37.4	23.0

	Ref.	∅	h
	S13	5.2	18.0
	TS14	5.2	18.0
	TS15	5.2	18.0
	CLS15-08	5.2	10.2
	1x S13 = 1x S13M		

Otras zonas de viento, alturas superiores, arriostramientos o trepado interno consultar / Other wind zones, additional hook heights, tie frames or internal climbing on request / Autres zones de vent, des hauteurs supplémentaires, entretoisements ou grues avec cage de télescopage intérieure, sur demande / Andere Windzonen, weitere Hakenhöhen, Abspannungen zum Gebäude oder Klettern im Gebäude auf Anfrage / Per zone con velocità del vento particolari, altezze superiori, ancoraggi o rampante in cavedio, consultare il fabbricante / При других ветренных зонах, при большой высоте, привязках к зданию или наращивании крана внутри здания проконсультируйтесь с нами



n°	Ref.	∅	h	n°	Ref.	∅	h	n°	Ref.	∅	h	n°	Ref.	∅	h
2	S13	5.2	18.0	7A	TMS23/PMS3	6.6	3.3	8	S23	6.6	18.0	13	TD23A	6.6	18.0
3	TS14	5.2	18.0	7B	TMS23/PMS4	6.6	3.3	9	TS24	6.6	18.0	14	D23	6.6	18.0
4	S14	5.2	18.0					10	S24	6.6	18.0				
5	TS15	5.2	18.0					11	TS25	6.6	18.0				
6	S15	5.2	18.0					12	S25	6.6	18.0				
1x S13 = 1x S13M								1x S23 = 1x S23M							
1x S15 = 1x S15M								1x S25 = 1x S25M							

Otras zonas de viento o alturas superiores consultar / Other wind zones or additional hook heights on request / Autres zones de vent ou des hauteurs supplémentaires sur demande / Andere Windzonen oder weitere Hakenhöhen auf Anfrage / Per zone con velocità del vento particolari o altezze superiori consultare il fabbricante / При других ветренных зонах о при большой высоте проконсультируйтесь с нами