

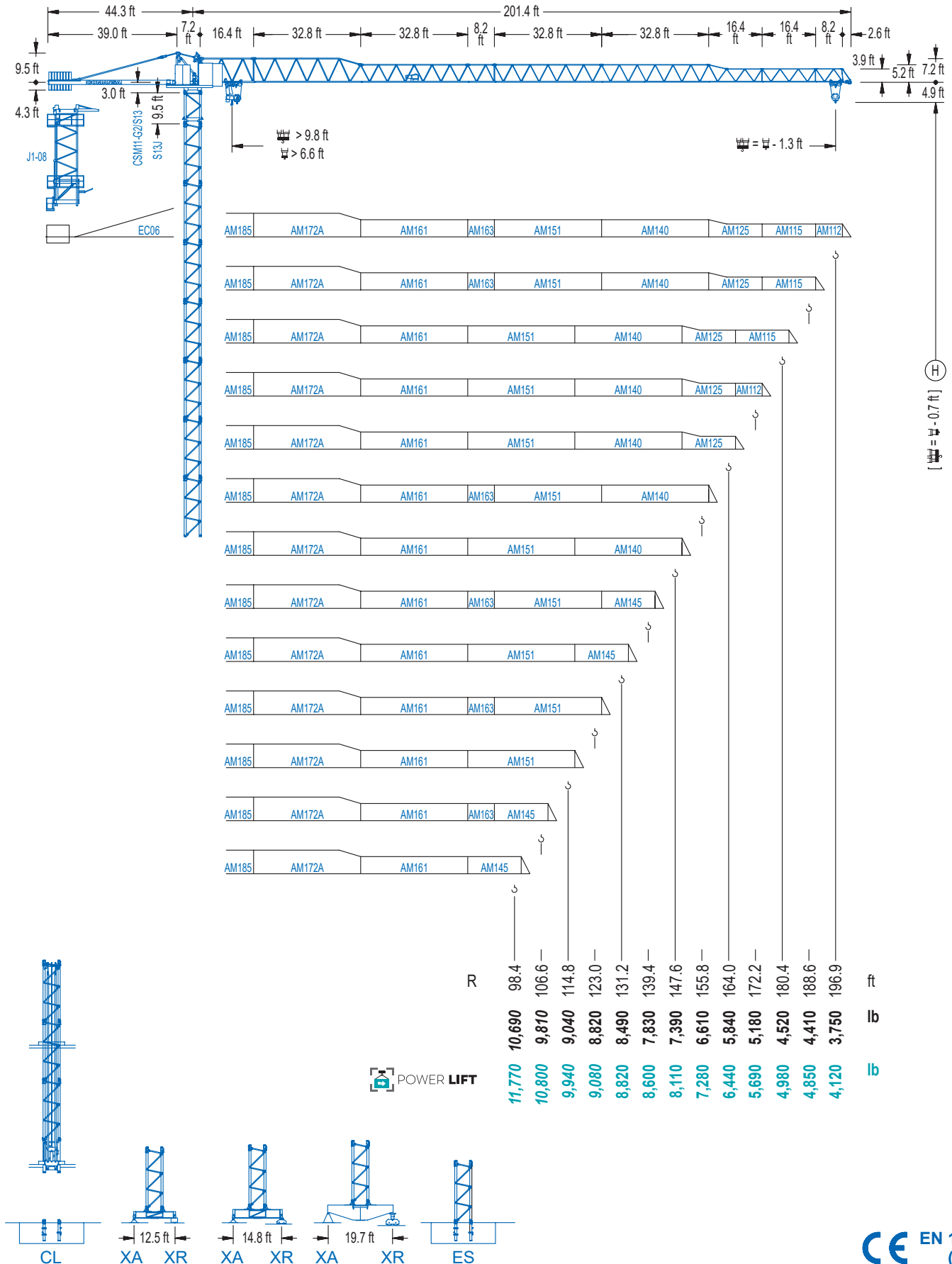


# COMANSA

## 1100 Series

## 11 LC 150

## DT 17,640 lb

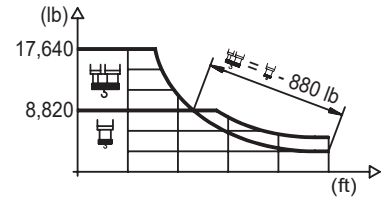


1100 Series

**DIAGRAMA DE CARGAS**

Load chart / Diagramme de charges / Lastdiagramm / Diagramma di carico / Диаграмма распределения нагрузки

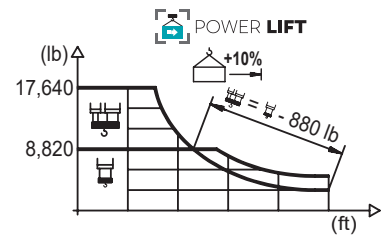
R (ft)	HSC					HSC														
196.9	48.9	59.1	65.6	75.5	87.3	94.8	98.4	106.6	114.8	123.0	131.2	139.4	147.6	155.8	164.0	172.2	180.4	188.6	196.9	ft
	17,640	14,090	12,430	10,520	8,820	8,820	8,440	7,720	7,100	6,550	6,080	5,670	5,290	4,980	4,670	4,410	4,170	3,950	3,750	lb
188.6	53.1	59.1	65.6	75.5	82.0	95.1	103.7	106.6	114.8	123.0	131.2	139.4	147.6	155.8	164.0	172.2	180.4	188.6	ft	
	17,640	15,590	13,780	11,680	10,560	8,820	8,820	8,530	7,850	7,250	6,750	6,280	5,890	5,530	5,200	4,920	4,650	4,410	lb	
180.4	51.8	59.1	65.6	75.5	82.0	92.8	101.0	106.6	114.8	123.0	131.2	139.4	147.6	155.8	164.0	172.2	180.4	ft		
	17,640	15,150	13,400	11,330	10,250	8,820	8,820	8,310	7,650	7,080	6,570	6,130	5,730	5,380	5,070	4,780	4,520	lb		
172.2	55.4	59.1	65.6	75.5	82.0	91.9	99.1	108.3	114.8	123.0	131.2	139.4	147.6	155.8	164.0	172.2	ft			
	17,640	16,340	14,460	12,260	11,110	9,680	8,820	8,820	8,250	7,630	7,100	6,610	6,190	5,820	5,490	5,180	lb			
164.0	58.1	65.6	75.5	82.0	91.9	98.4	104.3	114.2	123.0	131.2	139.4	147.6	155.8	164.0	ft					
	17,640	15,340	13,030	11,790	10,320	9,480	8,820	8,110	7,540	7,030	6,590	6,190	5,840	lb						
155.8	61.4	65.6	75.5	82.0	91.9	98.4	110.2	120.7	123.0	131.2	139.4	147.6	155.8	ft						
	17,640	16,310	13,870	12,590	11,000	10,120	8,820	8,820	8,640	8,020	7,500	7,030	6,610	lb						
147.6	64.0	75.5	82.0	91.9	98.4	106.6	114.8	126.0	131.2	139.4	147.6	ft								
	17,640	14,550	13,210	11,550	10,630	9,660	8,820	8,820	8,420	7,870	7,390	lb								
139.4	63.3	75.5	82.0	91.9	98.4	106.6	114.2	125.3	131.2	139.4	ft									
	17,640	14,440	13,100	11,460	10,560	9,570	8,820	8,820	8,380	7,830	lb									
131.2	64.0	75.5	82.0	91.9	98.4	106.6	115.2	127.0	131.2	ft										
	17,640	14,620	13,250	11,600	10,670	9,700	8,820	8,820	8,490	lb										
123.0	64.3	75.5	82.0	91.9	98.4	106.6	115.5	123.0	ft											
	17,640	14,640	13,270	11,620	10,690	9,720	8,820	lb												
114.8	64.3	75.5	82.0	91.9	98.4	106.6	113.4	ft												
	17,640	14,680	13,320	11,640	10,740	9,740	9,040	lb												
106.6	64.0	75.5	82.0	91.9	98.4	105.2	ft													
	17,640	14,550	13,180	11,550	10,630	9,810	lb													
98.4	63.3	75.5	82.0	91.9	97.0	ft														
	17,640	14,370	13,050	11,420	10,690	lb														



**DIAGRAMA DE CARGAS POWERLIFT**

Load chart PowerLift / Diagramme de charges PowerLift / Lastdiagramm PowerLift / Diagramma di carico PowerLift / Диаграмма распределения нагрузки PowerLift

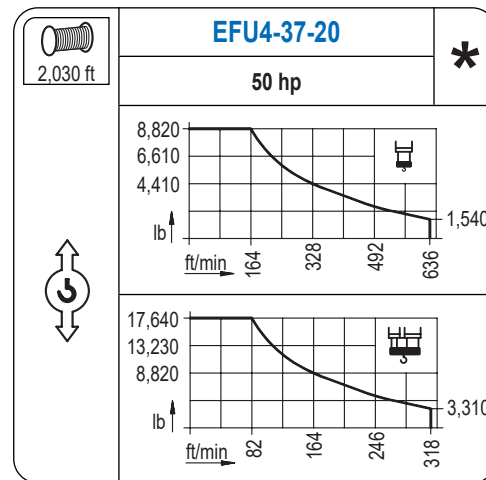
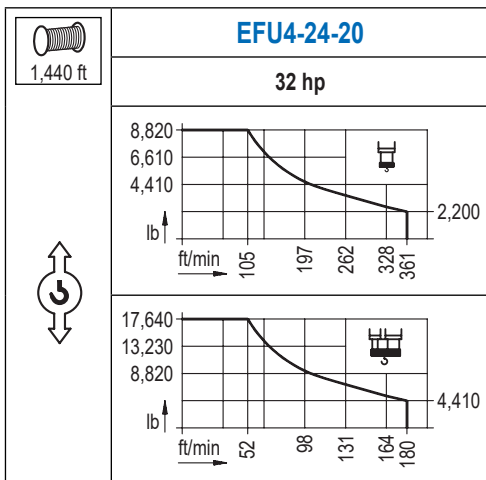
R (ft)	HSC					HSC														
196.9	52.5	59.1	65.6	75.5	82.0	94.2	102.4	106.6	114.8	123.0	131.2	139.4	147.6	155.8	164.0	172.2	180.4	188.6	196.9	ft
	17,640	15,370	13,580	11,510	10,410	8,820	8,820	8,420	7,740	7,160	6,660	6,190	5,800	5,450	5,140	4,850	4,590	4,340	4,120	lb
188.6	57.4	65.6	75.5	82.0	91.9	102.7	112.2	114.8	123.0	131.2	139.4	147.6	155.8	164.0	172.2	180.4	188.6	ft		
	17,640	15,060	12,790	11,600	10,120	8,820	8,820	8,580	7,940	7,390	6,900	6,460	6,060	5,710	5,400	5,110	4,850	lb		
180.4	56.1	65.6	75.5	82.0	91.9	100.4	109.6	114.8	123.0	131.2	139.4	147.6	155.8	164.0	172.2	180.4	ft			
	17,640	14,660	12,430	11,270	9,830	8,820	8,820	8,360	7,740	7,190	6,700	6,280	5,910	5,560	5,250	4,980	lb			
172.2	59.7	65.6	75.5	82.0	91.9	98.4	107.3	117.5	123.0	131.2	139.4	147.6	155.8	164.0	172.2	ft				
	17,640	15,830	13,450	12,190	10,650	9,810	8,820	8,360	7,780	7,250	6,810	6,390	6,040	5,690	lb					
164.0	63.0	75.5	82.0	91.9	98.4	106.6	113.2	124.0	131.2	139.4	147.6	155.8	164.0	ft						
	17,640	14,310	12,990	11,350	10,450	9,480	8,820	8,820	8,270	7,740	7,250	6,810	6,440	lb						
155.8	66.6	75.5	82.0	91.9	98.4	106.6	114.8	119.8	131.2	139.4	147.6	155.8	ft							
	17,640	15,260	13,840	12,130	11,180	10,140	9,280	8,820	8,820	8,250	7,740	7,280	lb							
147.6	69.2	75.5	82.0	91.9	98.4	106.6	114.8	125.0	137.1	139.4	147.6	ft								
	17,640	16,010	14,530	12,740	11,750	10,670	9,770	8,820	8,820	8,660	8,110	lb								
139.4	68.9	75.5	82.0	91.9	98.4	106.6	114.8	124.0	136.5	139.4	ft									
	17,640	15,900	14,440	12,650	11,660	10,600	9,700	8,820	8,820	8,600	lb									
131.2	69.2	75.5	82.0	91.9	98.4	106.6	114.8	124.0	131.2	ft										
	17,640	15,940	14,460	12,680	11,680	10,630	9,720	8,820	lb											
123.0	69.2	75.5	82.0	91.9	98.4	106.6	114.8	121.6	ft											
	17,640	15,980	14,510	12,720	11,730	10,670	9,740	9,080	lb											
114.8	69.6	75.5	82.0	91.9	98.4	106.6	113.4	ft												
	17,640	16,050	14,570	12,760	11,770	10,710	9,940	lb												
106.6	68.9	75.5	82.0	91.9	98.4	105.2	ft													
	17,640	15,920	14,460	12,680	11,680	10,800	lb													
98.4	68.6	75.5	82.0	91.9	97.0	ft														
	17,640	15,760	14,310	12,540	11,770	lb														



Datos válidos hasta 328 ft de ABG. Para alturas mayores consultar / Valid data up to 328 ft HUH. Additional heights on request / Données valables jusqu'à 328 ft HSC. Pour des autres hauteurs, merci de nous consulter / Gültige Daten bis zu 328 ft HH. Bei höheren Hakenhöhen nachfragen / Dati validi fino a 328 ft ASG. Per altezze superiori consultare Comansa / Допустимые данные до 328 фут ВГК. Для более высоких высот консультируйтесь

**MECANISMOS**

Mechanisms / Mécanismes / Antriebe / Meccanismi / Механизмы



## MECANISMOS

Mechanisms / Mécanismes / Antriebe / Meccanismi / Механизмы

	<b>CFU-4.0</b>
	5.4 hp
0 ⇔ 262 ft/min	

	<b>GFU-5.5</b>
	2x 7.4 hp
0 ⇔ 0,7 rpm	

	<b>TS2-5.5</b>
	2x 40 ft·lb
	78 ft/min
	1XR51 3XR51

	<b>TRA-7.5</b>
	2x 55 ft·lb
	78 ft/min
	5XR71

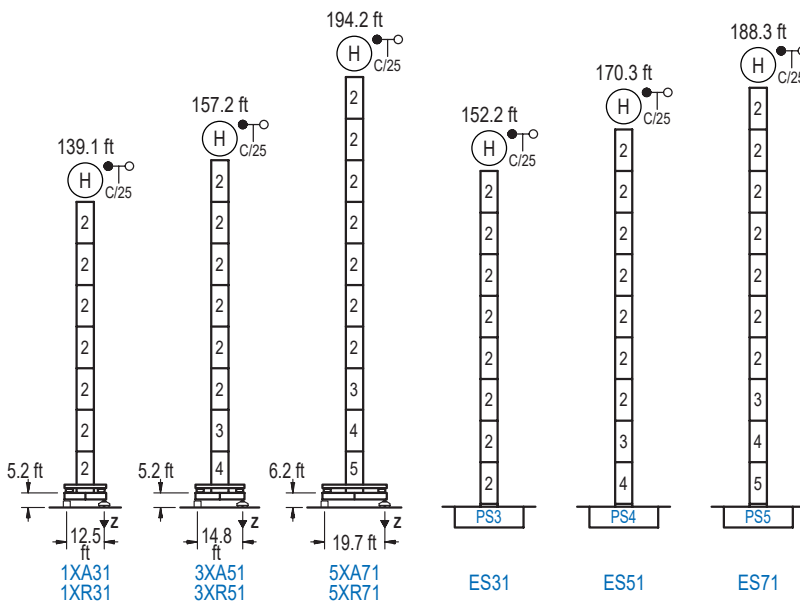
Elevación / Hoist / Levage / Hub / Sollevamento / Тип механизма (подъем)	Carro / Trolley / Chariot / Laufkatze / Carrelo / Грузовая тележка	Giro / Slewing / Rotation / Drehbewegung / Rotazione / Поворот	Traslación / Travel / Translation / Verfahrbewegung / Traslazione / Ход	Tensión de alimentación / Operating voltage / Tension de service / Betriebsspannung / Tensione di alimentazione / Напряжение источника питания	Potencia requerida / Required power / Puissance requise / Benötigte Leistung / Potenza richiesta / требуемая мощность
EFU4-24-20	CFU-4.0	(2x) GFU-5.5	(2x) TS2-5.5 (2x) TRA-7.5	480 V 3ph 60 Hz	36 kVA
EFU4-37-20					49 kVA

Optional / Optional / En option / Kaufoption / Opzionale / Опционально
<b>*</b>

## ALTURAS BAJO GANCHO

Heights under hook / Hauteurs sous crochet / Hakenhöhen / Altezza sotto gancio / Высота под крюком

∅ 5.2 ft

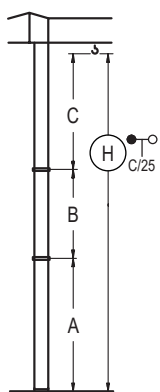


n°	Ref.	∅	h
2	S13	5.2	18.0
3	TS14	5.2	18.0
4	S14	5.2	18.0
5	TS15	5.2	18.0
6	S15	5.2	18.0
1x S13 = 1x S13M			
1x S15 = 1x S15M			

<b>Z máx.</b>	En servicio / In operation / En service / In Betrieb / In servizio / При работе	1XR31.. 154 kip 3XR51.. 154 kip 5XR71.. 152 kip
	Fuera de servicio / Out of service / Hors service / Ausser Betrieb / Fuori servizio / В стационарном состоянии	1XR31.. 146 kip 3XR51.. 163 kip 5XR71.. 205 kip

## GRÚA ARRIOSTRADA

Braced crane / Grue à entretoisement / Abgespannter Kran / Gru ancorata / Нарастиваемый кран



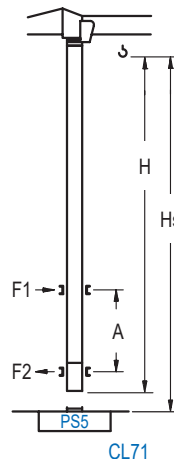
	1XA31	3XA51	5XA71
A max	95.5	113.5	150.6
A min	59.4	59.4	96.5
B max	-	72.2	72.2
B min	-	54.1	54.1
C max	115.8	115.8	115.8
H max	211.3	283.5	229.3

	ES31	ES51	ES71
A max	108.6	126.6	144.7
A min	54.5	72.5	90.6
B max	-	72.2	72.2
B min	-	54.1	54.1
C max	115.8	115.8	115.8
H max	224.4	296.6	242.5

## GRÚA TREPADORA

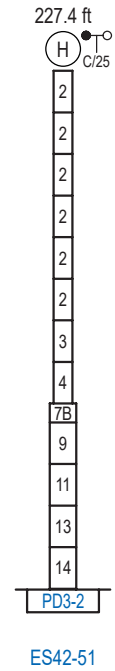
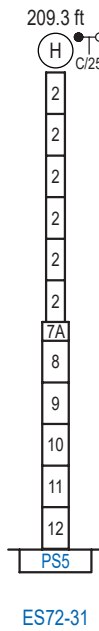
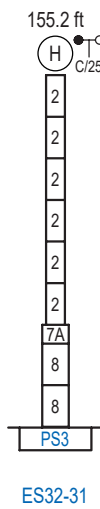
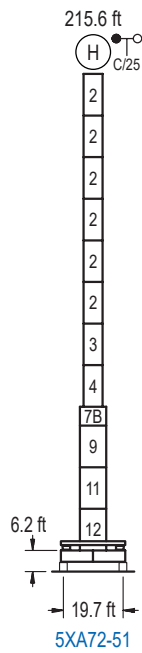
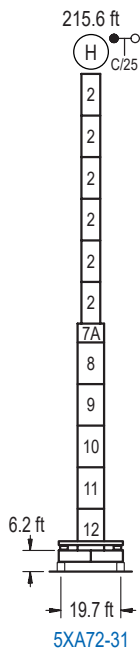
Internal climbing crane / Grue avec cage de télescopage intérieure / Kran mit klettern im Gebäude / Gru in rampante in cavedio / Кран с самоподъемом



Hook Height (ft)	Hs < 1,310 ft	
	A max (ft)	A min (ft)
144.0 ft S13J + 5x S13 + TS14 + TS15 + CLS15-08	55.1	36.1
126.0 ft S13J + 4x S13 + TS14 + TS15 + CLS15-08	46.3	29.5
107.9 ft S13J + 3x S13 + TS14 + TS15 + CLS15-08	37.4	23.0

Ref.	∅	h
S13	5.2	18.0
TS14	5.2	18.0
TS15	5.2	18.0
CLS15-08	5.2	10.2
1x S13 = 1x S13M		

Otras zonas de viento, alturas superiores, arriostramientos o trepado interno consultar / Other wind zones, additional hook heights, tie frames or internal climbing on request / Autres zones de vent, des hauteurs supplémentaires, entretoisements ou grues avec cage de télescopage intérieure, sur demande / Andere Windzonen, weitere Hakenhöhen, Abspannungen zum Gebäude oder Klettern im Gebäude auf Anfrage / Per zone con velocità del vento particolari, altezze superiori, ancoraggi o rampante in cavedio, consultare il fabbricante / При других ветренных зонах, при большой высоте, привязках к зданию или наращивании крана внутри здания проконсультируйтесь с нами



n°	Ref.	∅	h	n°	Ref.	∅	h	n°	Ref.	∅	h	n°	Ref.	∅	h
2	S13	5.2	18.0	7A	TMS23/PMS3	6.6	3.3	8	S23	6.6	18.0	13	TD23A	6.6	18.0
3	TS14	5.2	18.0	7B	TMS23/PMS4	6.6	3.3	9	TS24	6.6	18.0	14	D23	6.6	18.0
4	S14	5.2	18.0					10	S24	6.6	18.0				
5	TS15	5.2	18.0					11	TS25	6.6	18.0				
6	S15	5.2	18.0					12	S25	6.6	18.0				
1x S13 = 1x S13M								1x S23 = 1x S23M							
1x S15 = 1x S15M								1x S25 = 1x S25M							

Otras zonas de viento o alturas superiores consultar / Other wind zones or additional hook heights on request / Autres zones de vent ou des hauteurs supplémentaires sur demande / Andere Windzonen oder weitere Hakenhöhen auf Anfrage / Per zone con velocità del vento particolari o altezze superiori consultare il fabbricante / При других ветренных зонах о при большой высоте проконсультируйтесь с нами



DS.2042.13.IA 07/21 **11LC150/DT 17,640 lb**