

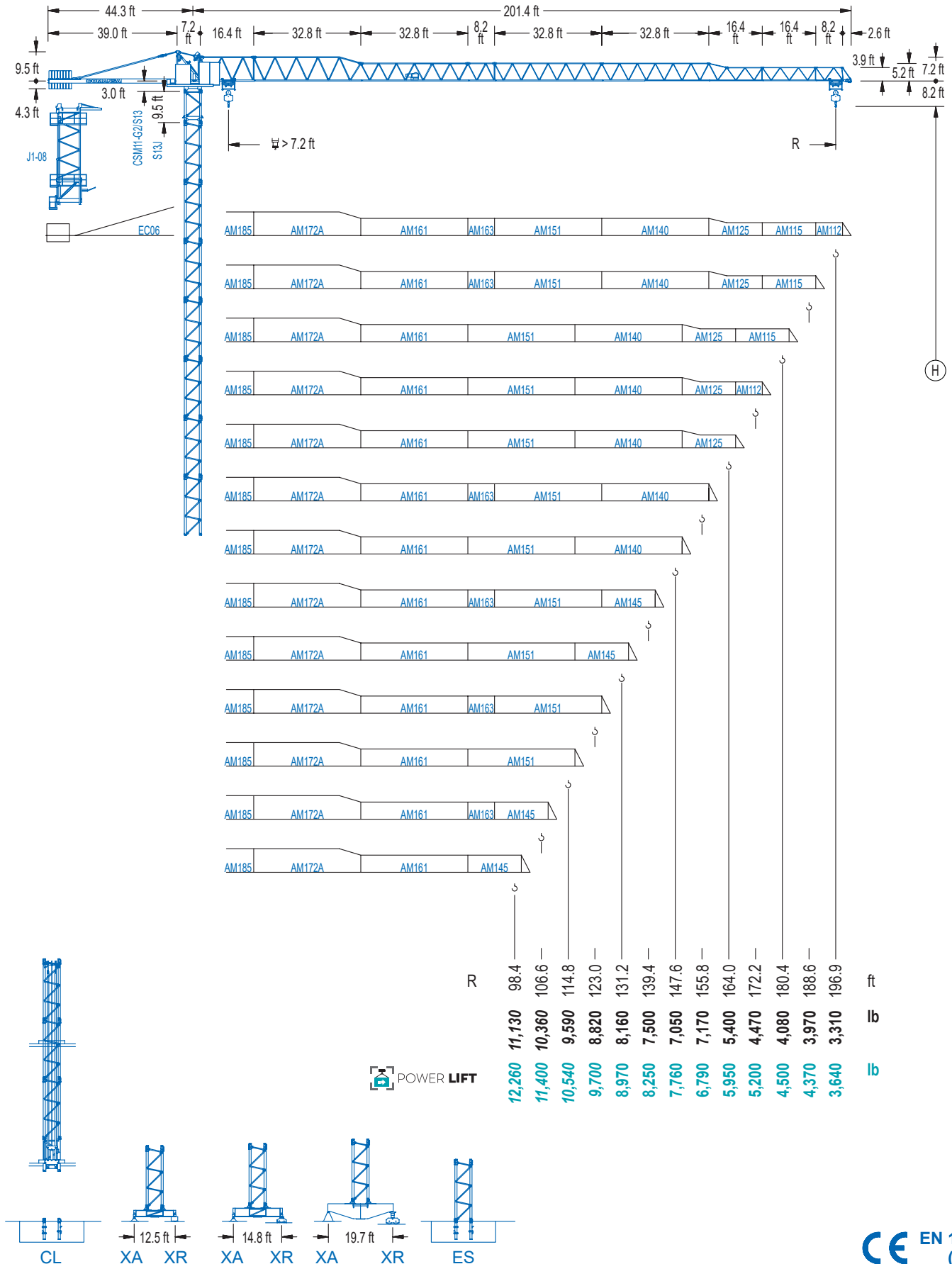


COMANSA

1100 Series

11 LC 150

RC 17,640 lb



1100 Series

DIAGRAMA DE CARGAS

Load chart / Diagramme de charges / Lastdiagramm / Diagramma di carico / Диаграмма распределения нагрузки

R (ft)	H										H									
196.9	48.9	55.8	65.6	72.2	82.0	89.6	98.4	106.6	114.8	123.0	131.2	139.4	147.6	155.8	164.0	172.2	180.4	188.6	196.9	ft
	17,640	15,150	12,590	11,310	9,770	8,820	7,890	7,190	6,570	6,040	5,580	5,180	4,830	4,500	4,210	3,950	3,730	3,510	3,310	lb
188.6	53.5	55.8	65.6	72.2	82.0	88.6	98.1	106.6	114.8	123.0	131.2	139.4	147.6	155.8	164.0	172.2	180.4	188.6	ft	
	17,640	16,750	13,980	12,540	10,850	9,920	8,820	8,000	7,340	6,770	6,260	5,820	5,420	5,070	4,740	4,450	4,210	3,970	lb	
180.4	52.2	55.8	65.6	72.2	82.0	88.6	95.8	106.6	114.8	123.0	131.2	139.4	147.6	155.8	164.0	172.2	180.4	ft		
	17,640	16,340	13,620	12,210	10,560	9,680	8,820	7,800	7,140	6,570	6,080	5,640	5,270	4,920	4,610	4,320	4,080	lb		
172.2	55.8	65.6	72.2	82.0	88.6	103.0	106.6	114.8	123.0	131.2	139.4	147.6	155.8	164.0	172.2	ft				
	17,640	14,700	13,230	11,440	10,470	8,820	8,470	7,760	7,140	6,610	6,150	5,730	5,380	5,050	4,740	lb				
164.0	59.1	65.6	72.2	82.0	88.6	98.4	108.6	114.8	123.0	131.2	139.4	147.6	155.8	164.0	ft					
	17,640	15,630	14,070	12,170	11,160	9,900	8,820	8,270	7,630	7,080	6,570	6,150	5,750	5,400	lb					
155.8	62.3	72.2	82.0	88.6	98.4	106.6	115.2	123.0	131.2	139.4	147.6	155.8	ft							
	17,640	14,990	12,990	11,900	10,560	9,630	8,820	8,180	7,580	7,050	6,590	6,170	lb							
147.6	65.9	72.2	82.0	88.6	98.4	106.6	114.8	122.0	131.2	139.4	147.6	155.8	ft							
	17,640	15,960	13,840	12,700	11,270	10,300	9,460	8,820	8,110	7,540	7,050	lb								
139.4	65.6	72.2	82.0	88.6	98.4	106.6	114.8	121.4	131.2	139.4	ft									
	17,640	15,850	13,760	12,610	11,200	10,230	9,390	8,820	8,050	7,500	lb									
131.2	66.3	72.2	82.0	88.6	98.4	106.6	114.8	122.7	131.2	ft										
	17,640	16,050	13,930	12,790	11,350	10,360	9,520	8,820	8,160	lb										
123.0	66.6	72.2	82.0	88.6	98.4	106.6	114.8	123.0	ft											
	17,640	16,090	13,980	12,810	11,380	10,380	9,550	8,820	lb											
114.8	66.9	72.2	82.0	88.6	98.4	106.6	114.8	ft												
	17,640	16,180	14,020	12,870	11,420	10,430	9,590	lb												
106.6	66.3	72.2	82.0	88.6	98.4	106.6	ft													
	17,640	16,050	13,930	12,790	11,350	10,360	lb													
98.4	65.3	72.2	82.0	88.6	98.4	ft														
	17,640	15,760	13,670	12,540	11,130	lb														

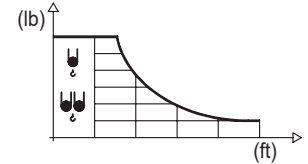
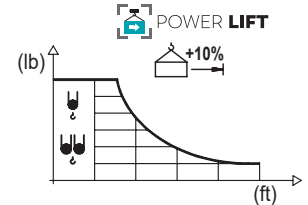


DIAGRAMA DE CARGAS POWERLIFT

Load chart PowerLift / Diagramme de charges PowerLift / Lastdiagramm PowerLift / Diagramma di carico PowerLift / Диаграмма распределения нагрузки PowerLift

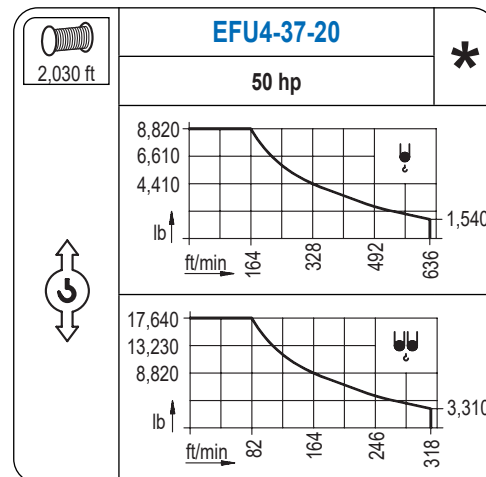
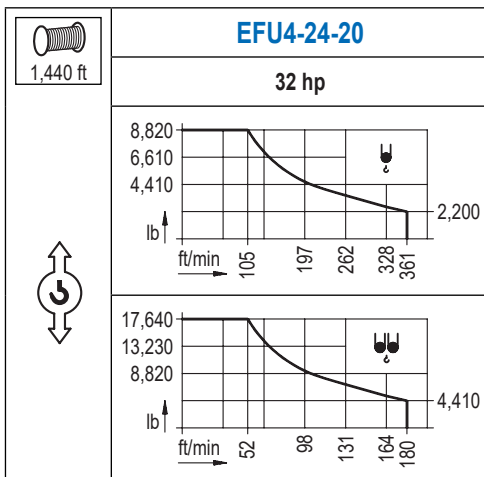
R (ft)	H										H									
196.9	52.2	59.1	65.6	75.5	82.0	91.9	95.8	106.6	114.8	123.0	131.2	139.4	147.6	155.8	164.0	172.2	180.4	188.6	196.9	ft
	17,640	15,340	13,620	11,620	10,560	9,280	8,820	7,800	7,140	6,570	6,080	5,640	5,270	4,920	4,610	4,320	4,080	3,860	3,640	lb
188.6	57.4	65.6	75.5	82.0	91.9	98.4	105.6	114.8	123.0	131.2	139.4	147.6	155.8	164.0	172.2	180.4	188.6	ft		
	17,640	15,150	12,940	11,770	10,360	9,570	8,820	8,000	7,360	6,830	6,350	5,930	5,560	5,200	4,890	4,630	4,370	lb		
180.4	56.1	65.6	75.5	82.0	91.9	98.4	103.3	114.8	123.0	131.2	139.4	147.6	155.8	164.0	172.2	180.4	ft			
	17,640	14,770	12,610	11,490	10,080	9,300	8,820	7,780	7,190	6,640	6,170	5,750	5,400	5,070	4,760	4,500	lb			
172.2	60.0	65.6	75.5	82.0	91.9	98.4	106.6	110.9	123.0	131.2	139.4	147.6	155.8	164.0	172.2	ft				
	17,640	15,980	13,670	12,460	10,960	10,120	9,240	8,820	7,830	7,250	6,750	6,310	5,890	5,530	5,200	lb				
164.0	63.6	75.5	82.0	91.9	98.4	106.6	117.5	123.0	131.2	139.4	147.6	155.8	164.0	ft						
	17,640	14,570	13,270	11,680	10,800	9,850	8,820	8,360	7,760	7,210	6,750	6,330	5,950	lb						
155.8	67.3	75.5	82.0	91.9	98.4	106.6	114.8	124.7	131.2	139.4	147.6	155.8	ft							
	17,640	15,560	14,180	12,480	11,550	10,540	9,700	8,820	8,310	7,740	7,230	6,790	lb							
147.6	71.5	82.0	91.9	98.4	106.6	114.8	123.0	132.2	139.4	147.6	ft									
	17,640	15,120	13,340	12,350	11,270	10,360	9,590	8,820	8,290	7,760	lb									
139.4	71.2	82.0	91.9	98.4	106.6	114.8	123.0	131.6	139.4	ft										
	17,640	15,040	13,250	12,260	11,200	10,320	9,520	8,820	8,250	lb										
131.2	71.9	82.0	91.9	98.4	106.6	114.8	123.0	131.2	ft											
	17,640	15,260	13,450	12,430	11,380	10,450	9,660	8,970	lb											
123.0	72.2	82.0	91.9	98.4	106.6	114.8	123.0	ft												
	17,640	15,300	13,490	12,480	11,420	10,490	9,700	lb												
114.8	72.5	82.0	91.9	98.4	106.6	114.8	ft													
	17,640	15,390	13,560	12,540	11,460	10,540	lb													
106.6	72.2	82.0	91.9	98.4	106.6	ft														
	17,640	15,280	13,470	12,480	11,400	lb														
98.4	70.9	82.0	91.9	98.4	ft															
	17,640	15,010	13,230	12,260	lb															



Datos válidos hasta 328 ft de ABG. Para alturas mayores consultar / Valid data up to 328 ft HUH. Additional heights on request / Données valables jusqu'à 328 ft HSC. Pour des autres hauteurs, merci de nous consulter / Gültige Daten bis zu 328 ft HH. Bei höheren Hakenhöhen nachfragen / Dati validi fino a 328 ft ASG. Per altezze superiori consultare Comansa / Допустимые данные до 328 фут ВГК. Для более высоких высот консультируйтесь

MECANISMOS

Mechanisms / Mécanismes / Antriebe / Meccanismi / Механизмы



MECANISMOS

Mechanisms / Mécanismes / Antriebe / Meccanismi / Механизмы

	CFU-4.0
	5.4 hp
0 ⇔ 262 ft/min	

	GFU-5.5
	2x 7.4 hp
0 ⇔ 0,7 rpm	

	TS2-5.5
	2x 40 ft·lb
	78 ft/min
	1XR51 3XR51

	TRA-7.5
	2x 55 ft·lb
	78 ft/min
	5XR71

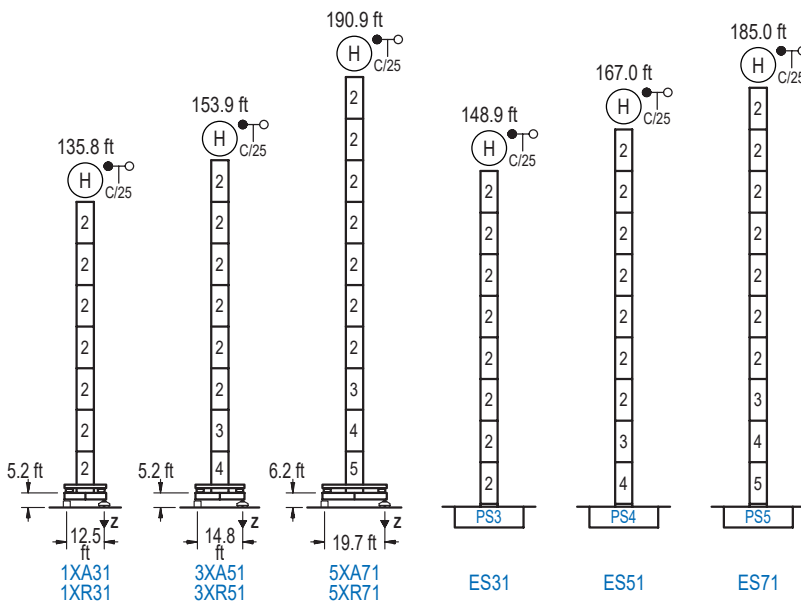
Elevación / Hoist / Levage / Hub / Sollevamento / Тип механизма (подъем)	Carro / Trolley / Chariot / Laufkatze / Carrello / Грузовая тележка	Giro / Slewing / Rotation / Drehbewegung / Rotazione / Поворот	Traslación / Travel / Translation / Verfahrbewegung / Traslazione / Ход	Tensión de alimentación / Operating voltage / Tension de service / Betriebsspannung / Tensione di alimentazione / Напряжение источника питания	Potencia requerida / Required power / Puissance requise / Benötigte Leistung / Potenza richiesta / требуемая мощность
EFU4-24-20	CFU-4.0	(2x) GFU-5.5	(2x) TS2-5.5 (2x) TRA-7.5	480 V 3ph 60 Hz	36 kVA
EFU4-37-20					49 kVA

Opcional / Optional / En option / Kaufoption / Opzionale / Опционально
*

ALTURAS BAJO GANCHO

Heights under hook / Hauteurs sous crochet / Hakenhöhen / Altezza sotto gancio / Высота под крюком

∅ 5.2 ft

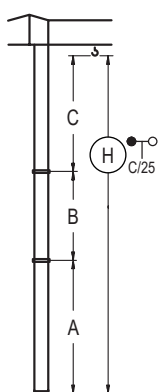


n°	Ref.	∅	h
2	S13	5.2	18.0
3	TS14	5.2	18.0
4	S14	5.2	18.0
5	TS15	5.2	18.0
6	S15	5.2	18.0
		1x S13 = 1x S13M	
		1x S15 = 1x S15M	

Z máx.	En servicio / In operation / En service / In Betrieb / In servizio / При работе	1XR31.. 154 kip 3XR51.. 154 kip 5XR71.. 152 kip
	Fuera de servicio / Out of service / Hors service / Ausser Betrieb / Fuori servizio / В стационарном состоянии	1XR31.. 146 kip 3XR51.. 165 kip 5XR71.. 205 kip

GRÚA ARRIOSTRADA

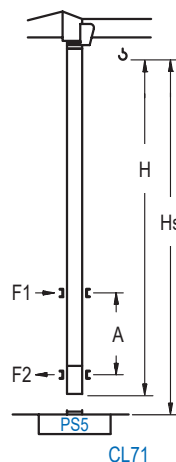
Braced crane / Grue à entretoisement / Abgespannter Kran / Gru ancorata / Нарастиваемый кран



	1XA31	3XA51	5XA71
A max	95.5	113.5	150.6
A min	59.4	59.4	63.6
B max	-	72.2	72.2
B min	-	54.1	54.1
C max	112.5	112.5	112.5
H max	208.0	280.2	335.3
	ES31	ES51	ES71
A max	108.6	126.6	144.7
A min	54.5	72.5	90.6
B max	-	72.2	72.2
B min	-	54.1	54.1
C max	112.5	112.5	112.5
H max	221.1	293.3	329.4

GRÚA TREPADORA

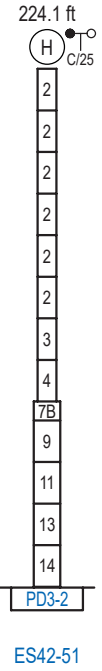
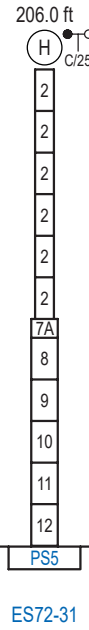
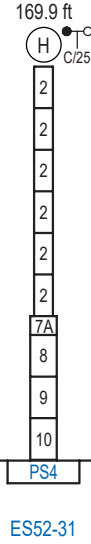
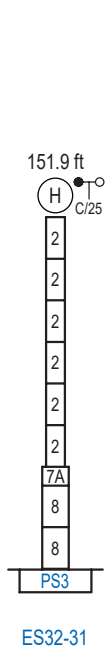
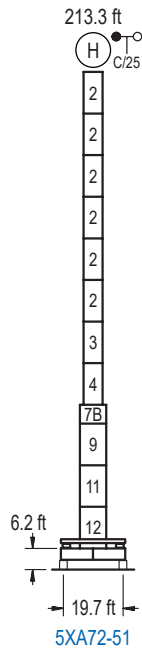
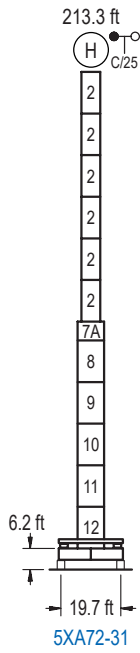
Internal climbing crane / Grue avec cage de télescopage intérieure / Kran mit klettern im Gebäude / Gru in rampante in cavedio / Кран с самоподъемом



	Hs < 1,310 ft	A max (ft)	A min (ft)	
		140.7 ft S13J + 5x S13 + TS14 + TS15 + CLS15-08	55.1	36.1
		122.7 ft S13J + 4x S13 + TS14 + TS15 + CLS15-08	46.3	29.5
		104.7 ft S13J + 3x S13 + TS14 + TS15 + CLS15-08	37.4	23.0

Ref.	∅	h
S13	5.2	18.0
TS14	5.2	18.0
TS15	5.2	18.0
CLS15-08	5.2	10.2
		1x S13 = 1x S13M

Otras zonas de viento, alturas superiores, arriostramientos o trepado interno consultar / Other wind zones, additional hook heights, tie frames or internal climbing on request / Autres zones de vent, des hauteurs supplémentaires, entretoisements ou grues avec cage de télescopage intérieure, sur demande / Andere Windzonen, weitere Hakenhöhen, Abspannungen zum Gebäude oder Klettern im Gebäude auf Anfrage / Per zone con velocità del vento particolari, altezze superiori, ancoraggi o rampante in cavedio, consultare il fabbricante / При других ветренных зонах, при большой высоте, привязках к зданию или наращивании крана внутри здания проконсультируйтесь с нами



n°	Ref.	∅	h	n°	Ref.	∅	h	n°	Ref.	∅	h	n°	Ref.	∅	h
2	S13	5.2	18.0	7A	TMS23/PMS3	6.6	3.3	8	S23	6.6	18.0	13	TD23A	6.6	18.0
3	TS14	5.2	18.0	7B	TMS23/PMS4	6.6	3.3	9	TS24	6.6	18.0	14	D23	6.6	18.0
4	S14	5.2	18.0					10	S24	6.6	18.0				
5	TS15	5.2	18.0					11	TS25	6.6	18.0				
6	S15	5.2	18.0					12	S25	6.6	18.0				
1x S13 = 1x S13M								1x S23 = 1x S23M							
1x S15 = 1x S15M								1x S25 = 1x S25M							

Otras zonas de viento o alturas superiores consultar / Other wind zones or additional hook heights on request / Autres zones de vent ou des hauteurs supplémentaires sur demande / Andere Windzonen oder weitere Hakenhöhen auf Anfrage / Per zone con velocità del vento particolari o altezze superiori consultare il fabbricante / При других ветренных зонах о при большой высоте проконсультируйтесь с нами