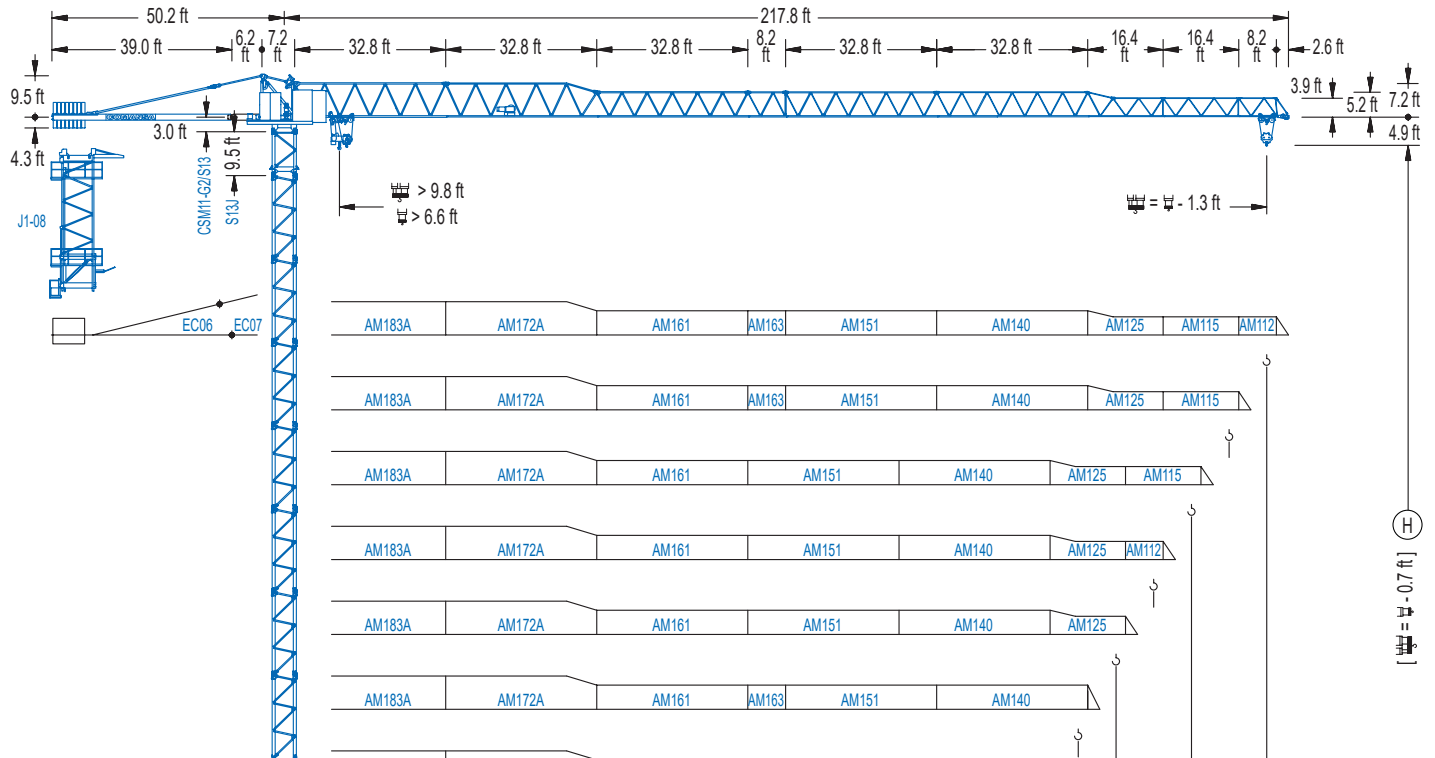


1100 Series

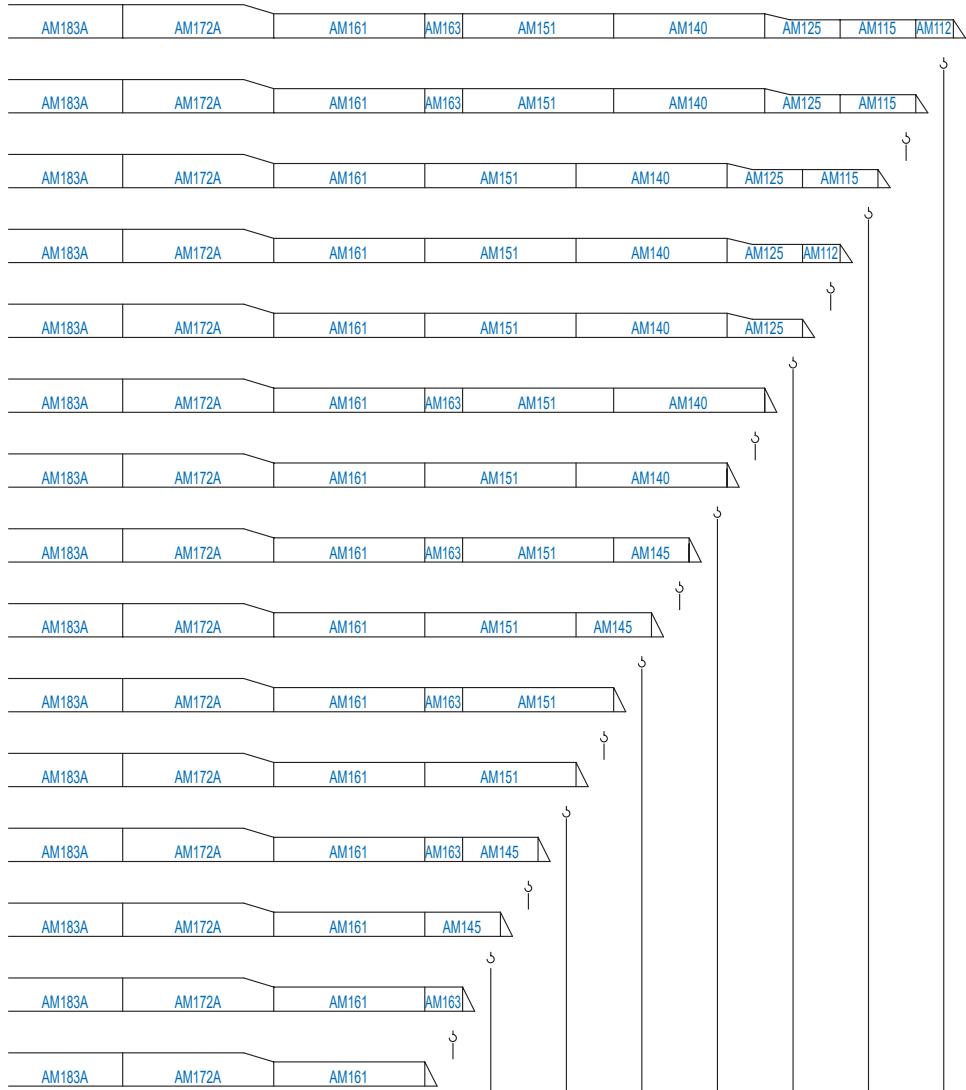
11 LC 160

DT 17,640 lb

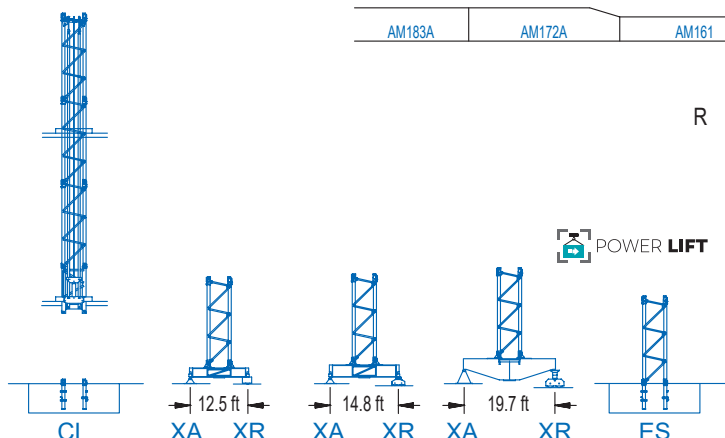
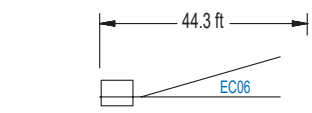


1100 Series

[H] = H - 0.7 ft





R	ft	lb	lb
12,370	98.4	11,240	
11,290	106.6	10,250	
10,320	114.8	9,370	
9,350	123.0	8,820	
8,820	131.2	8,710	
8,820	139.4	8,160	
8,380	147.6	7,610	
7,410	155.8	6,720	
7,030	164.0	6,390	
6,060	172.2	5,510	
5,820	180.4	5,290	
5,340	188.6	4,850	
4,850	196.9	4,410	
4,010	205.1	3,640	
3,400	213.3	3,090	

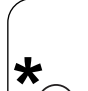


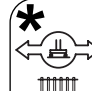
MECANISMOS

Mechanisms / Mécanismes / Antriebe / Meccanismi / Механизмы

	CFU-4.0
	5.4 hp
0 ⇔ 262 ft/min	

	GFU-5.5
	2x 7.4 hp
0 ⇔ 0,7 rpm	

	TS2-5.5
	2x 40 ft·lb
	78 ft/min
	1XR51 3XR51

	TRA-7.5
	2x 55 ft·lb
	78 ft/min
	5XR71

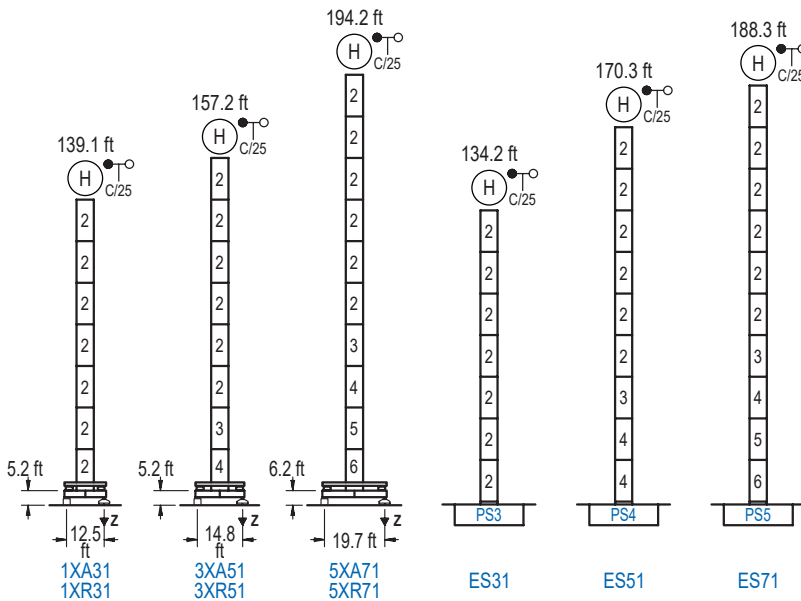
Elevación / Hoist / Leve / Hub / Sollevamento / Тип механизма (подъем)	Carro / Trolley / Chariot / Laufkatze / Carrelo / Грузовая тележка	Giro / Slewing / Rotation / Drehbewegung / Rotazione / Поворот	Traslación / Travel / Translation / Verfahrbewegung / Traslazione / Ход	Tensión de alimentación / Operating voltage / Tension de service / Betriebsspannung / Tensione di alimentazione / Напряжение источника питания	Potencia requerida / Required power / Puissance requise / Benötigte Leistung / Potenza richiesta / требуемая мощность
EFU4-24-20	CFU-4.0	(2x) GFU-5.5	(2x) TS2-5.5 (2x) TRA-7.5	480 V 3ph 60 Hz	36 kVA
EFU4-37-20					49 kVA

Opcional / Optional / En option / Kaufoption / Opzionale / Опционально
*

ALTURAS BAJO GANCHO

Heights under hook / Hauteurs sous crochet / Hakenhöhen / Altezza sotto gancio / Высота под крюком

∅ 5.2 ft

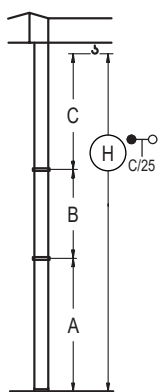


n°	Ref.	∅	h
2	S13	5.2	18.0
3	TS14	5.2	18.0
4	S14	5.2	18.0
5	TS15	5.2	18.0
6	S15	5.2	18.0
1x S13 = 1x S13M			
1x S15 = 1x S15M			

Z máx.	En servicio / In operation / En service / In Betrieb / In servizio / При работе	1XR31.. 159 kip 3XR51.. 154 kip 5XR71.. 152 kip
	Fuera de servicio / Out of service / Hors service / Ausser Betrieb / Fuori servizio / В стационарном состоянии	1XR31.. 150 kip 3XR51.. 170 kip 5XR71.. 212 kip

GRÚA ARRIOSTRADA

Braced crane / Grue à entretoisement / Abgespannter Kran / Gru ancorata / Нарастиваемый кран

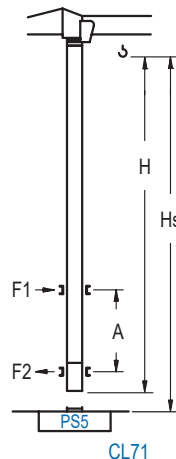


	1XA31	3XA51	5XA71
A max	95.5	113.5	150.6
A min	59.4	59.4	96.5
B max	-	72.2	72.2
B min	-	54.1	54.1
C max	115.8	115.8	115.8
H max	211.3	283.5	229.3
	283.5	301.5	266.4
		338.6	

	ES31	ES51	ES71
A max	90.6	126.6	144.7
A min	54.5	72.5	90.6
B max	-	72.2	72.2
B min	-	54.1	54.1
C max	115.8	115.8	115.8
H max	206.4	278.5	242.5
		314.6	260.5
			332.7

GRÚA TREPADORA

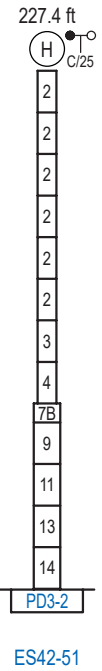
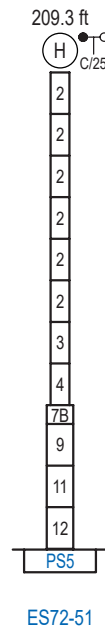
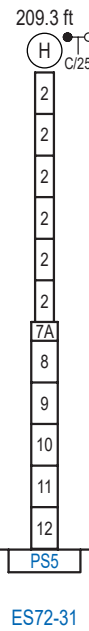
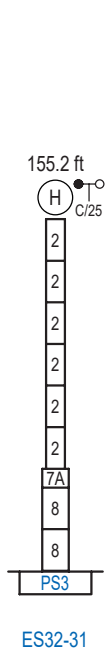
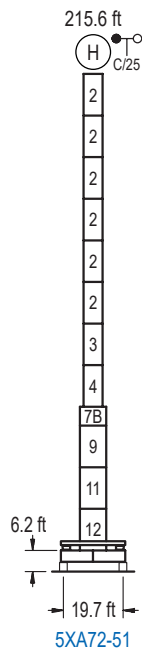
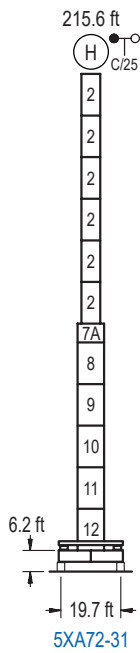
Internal climbing crane / Grue avec cage de télescopage intérieure / Kran mit klettern im Gebäude / Gru in rampante in cavedio / Кран с самоподъемом



∅	H < 1,310 ft	A max (ft) / A min (ft)	
		A max (ft)	A min (ft)
144.0 ft	S13J + 5x S13 + TS14 + TS15 + CLS15-08	55.1	36.1
126.0 ft		S13J + 4x S13 + TS14 + TS15 + CLS15-08	46.3
107.9 ft	S13J + 3x S13 + TS14 + TS15 + CLS15-08	37.4	23.0

Ref.	∅	h
S13	5.2	18.0
TS14	5.2	18.0
TS15	5.2	18.0
CLS15-08	5.2	10.2
1x S13 = 1x S13M		

Otras zonas de viento, alturas superiores, arriostramientos o trepado interno consultar / Other wind zones, additional hook heights, tie frames or internal climbing on request / Autres zones de vent, des hauteurs supplémentaires, entretoisements ou grues avec cage de télescopage intérieure, sur demande / Andere Windzonen, weitere Hakenhöhen, Abspannungen zum Gebäude oder Klettern im Gebäude auf Anfrage / Per zone con velocità del vento particolari, altezze superiori, ancoraggi o rampante in cavedio, consultare il fabbricante / При других ветренных зонах, при большой высоте, привязках к зданию или наращивании крана внутри здания проконсультируйтесь с нами



n°	Ref.	∅	h	n°	Ref.	∅	h	n°	Ref.	∅	h	n°	Ref.	∅	h
2	S13	5.2	18.0	7A	TMS23/PMS3	6.6	3.3	8	S23	6.6	18.0	13	TD23A	6.6	18.0
3	TS14	5.2	18.0	7B	TMS23/PMS4	6.6	3.3	9	TS24	6.6	18.0	14	D23	6.6	18.0
4	S14	5.2	18.0					10	S24	6.6	18.0				
5	TS15	5.2	18.0					11	TS25	6.6	18.0				
6	S15	5.2	18.0					12	S25	6.6	18.0				
1x S13 = 1x S13M								1x S23 = 1x S23M							
1x S15 = 1x S15M								1x S25 = 1x S25M							

Otras zonas de viento o alturas superiores consultar / Other wind zones or additional hook heights on request / Autres zones de vent ou des hauteurs supplémentaires sur demande / Andere Windzonen oder weitere Hakenhöhen auf Anfrage / Per zone con velocità del vento particolari o altezze superiori consultare il fabbricante / При других ветренных зонах о при большой высоте проконсультируйтесь с нами

