

1600 Series

DIAGRAMA DE CARGAS

Load chart / Diagramme de charges / Lastdiagramm / Diagramma di carico / Диаграмма распределения нагрузки

| R (ft) | 1600 Series | | | | | | | | | | 1600 Series | | | | | | | | | | | | | | | | | | | | | | | | | | | | | | | | | | | | | |
|--------|-------------|------|------|------|------|------|------|------|--------|--------|-------------|--------|--------|--------|--------|--------|--------|--------|--------|--------|--------|--------|--------|--------|--------|--------|--------|--------|--------|--------|--------|--------|--------|-------|-------|-------|-------|-------|-------|-------|-------|-------|-------|-------|-------|-------|-------|----|
| 213.3 | 41.3 | 52.5 | 59.1 | 65.6 | 73.5 | 77.8 | 82.0 | 88.6 | 98.4 | 105.0 | 114.8 | 121.4 | 131.2 | 137.8 | 147.6 | 154.2 | 164.0 | 170.6 | 180.4 | 187.0 | 196.9 | 203.4 | 213.3 | ft | 26,460 | 19,930 | 17,280 | 15,210 | 13,230 | 13,230 | 12,430 | 11,380 | 10,100 | 9,370 | 8,440 | 7,910 | 7,230 | 6,810 | 6,280 | 5,950 | 5,510 | 5,270 | 4,920 | 4,700 | 4,410 | 4,210 | 3,970 | lb |
| 196.9 | 44.3 | 52.5 | 59.1 | 65.6 | 72.2 | 78.7 | 83.7 | 88.6 | 98.4 | 105.0 | 114.8 | 121.4 | 131.2 | 137.8 | 147.6 | 154.2 | 164.0 | 170.6 | 180.4 | 187.0 | 196.9 | ft | 26,460 | 21,610 | 18,760 | 16,530 | 14,730 | 13,230 | 13,230 | 12,410 | 11,000 | 10,230 | 9,240 | 8,660 | 7,890 | 7,470 | 6,880 | 6,530 | 6,060 | 5,780 | 5,400 | 5,160 | 4,850 | lb | | | | |
| 180.4 | 47.6 | 52.5 | 59.1 | 65.6 | 72.2 | 78.7 | 84.6 | 90.6 | 98.4 | 105.0 | 114.8 | 121.4 | 131.2 | 137.8 | 147.6 | 154.2 | 164.0 | 170.6 | 180.4 | ft | 26,460 | 23,460 | 20,410 | 18,010 | 16,070 | 14,460 | 13,230 | 13,230 | 12,040 | 11,200 | 10,100 | 9,480 | 8,660 | 8,200 | 7,560 | 7,190 | 6,680 | 6,370 | 5,950 | lb | | | | | | | | |
| 164.0 | 51.8 | 59.1 | 65.6 | 72.2 | 78.7 | 82.0 | 92.8 | 99.7 | 105.0 | 114.8 | 121.4 | 131.2 | 137.8 | 147.6 | 154.2 | 164.0 | ft | 26,460 | 22,660 | 20,020 | 17,900 | 16,120 | 15,340 | 13,230 | 13,230 | 12,500 | 11,290 | 10,600 | 9,700 | 9,170 | 8,470 | 8,050 | 7,500 | lb | | | | | | | | | | | | | | |
| 147.6 | 53.1 | 59.1 | 65.6 | 72.2 | 78.7 | 82.0 | 88.6 | 95.5 | 103.3 | 114.8 | 121.4 | 131.2 | 137.8 | 147.6 | ft | 26,460 | 23,460 | 20,720 | 18,520 | 16,710 | 15,900 | 14,480 | 13,230 | 13,230 | 11,730 | 11,020 | 10,100 | 9,550 | 8,820 | lb | | | | | | | | | | | | | | | | | | |
| 131.2 | 55.1 | 59.1 | 65.6 | 72.2 | 78.7 | 82.0 | 88.6 | 99.1 | 107.6 | 114.8 | 121.4 | 131.2 | ft | 26,460 | 24,470 | 21,630 | 19,330 | 17,440 | 16,620 | 15,150 | 13,230 | 13,230 | 12,300 | 11,550 | 10,580 | lb | | | | | | | | | | | | | | | | | | | | | | |
| 114.8 | 52.5 | 59.1 | 65.6 | 72.2 | 78.7 | 82.0 | 88.6 | 99.1 | 107.9 | 114.8 | ft | 26,460 | 24,430 | 21,610 | 19,310 | 17,420 | 16,580 | 15,120 | 13,230 | 13,230 | 12,350 | lb | | | | | | | | | | | | | | | | | | | | | | | | | | |
| 98.4 | 56.8 | 65.6 | 72.2 | 78.7 | 82.0 | 88.6 | 96.4 | ft | 26,460 | 22,270 | 19,930 | 17,990 | 17,130 | 15,630 | 14,110 | lb | | | | | | | | | | | | | | | | | | | | | | | | | | | | | | | | |

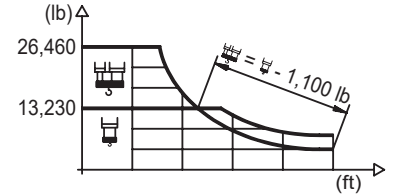
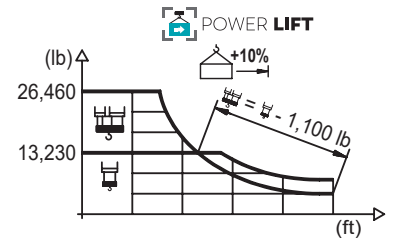


DIAGRAMA DE CARGAS POWERLIFT

Load chart PowerLift / Diagramme de charges PowerLift / Lastdiagramm PowerLift / Diagramma di carico PowerLift / Диаграмма распределения нагрузки PowerLift

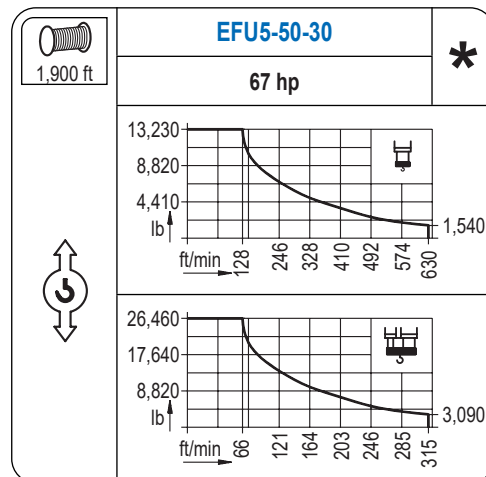
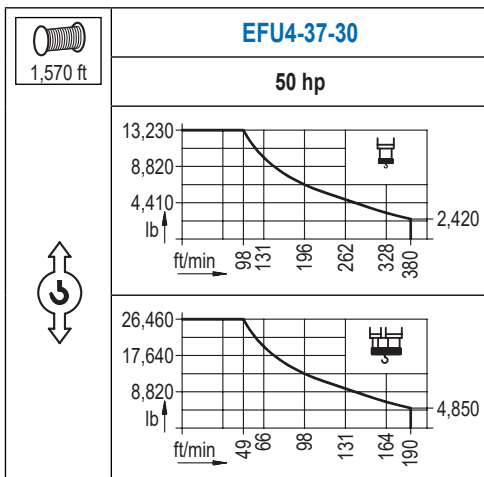
| R (ft) | 1600 Series | | | | | | | | | | 1600 Series | | | | | | | | | | | | | | | | | | | | | | | | | | | | | | | | | | | | | |
|--------|-------------|------|------|------|------|------|-------|-------|--------|--------|-------------|--------|--------|--------|--------|--------|--------|--------|--------|--------|--------|--------|--------|--------|--------|--------|--------|--------|--------|--------|--------|--------|--------|--------|-------|-------|-------|-------|-------|-------|-------|-------|-------|-------|-------|-------|-------|----|
| 213.3 | 44.3 | 52.5 | 59.1 | 65.6 | 72.2 | 78.7 | 83.3 | 88.6 | 98.4 | 105.0 | 114.8 | 121.4 | 131.2 | 137.8 | 147.6 | 154.2 | 164.0 | 170.6 | 180.4 | 187.0 | 196.9 | 203.4 | 213.3 | ft | 26,460 | 21,610 | 18,780 | 16,530 | 14,730 | 13,230 | 13,230 | 12,370 | 10,960 | 10,190 | 9,190 | 8,620 | 7,870 | 7,430 | 6,860 | 6,500 | 6,040 | 5,750 | 5,380 | 5,140 | 4,830 | 4,630 | 4,370 | lb |
| 196.9 | 47.6 | 52.5 | 59.1 | 65.6 | 72.2 | 78.7 | 84.6 | 90.2 | 98.4 | 105.0 | 114.8 | 121.4 | 131.2 | 137.8 | 147.6 | 154.2 | 164.0 | 170.6 | 180.4 | 187.0 | 196.9 | ft | 26,460 | 23,480 | 20,440 | 18,030 | 16,070 | 14,460 | 13,230 | 13,230 | 11,990 | 11,160 | 10,080 | 9,460 | 8,640 | 8,160 | 7,540 | 7,140 | 6,660 | 6,350 | 5,930 | 5,690 | 5,340 | lb | | | | |
| 180.4 | 51.2 | 59.1 | 65.6 | 72.2 | 78.7 | 82.0 | 91.2 | 97.8 | 105.0 | 114.8 | 121.4 | 131.2 | 137.8 | 147.6 | 154.2 | 164.0 | 170.6 | 180.4 | ft | 26,460 | 22,290 | 19,690 | 17,570 | 15,830 | 15,080 | 13,230 | 13,230 | 12,240 | 11,050 | 10,380 | 9,480 | 8,970 | 8,290 | 7,870 | 7,320 | 6,990 | 6,550 | lb | | | | | | | | | | |
| 164.0 | 55.8 | 65.6 | 72.2 | 78.7 | 82.0 | 88.6 | 100.4 | 108.3 | 114.8 | 121.4 | 131.2 | 137.8 | 147.6 | 154.2 | 164.0 | ft | 26,460 | 21,940 | 19,620 | 17,700 | 16,870 | 15,390 | 13,230 | 13,230 | 12,370 | 11,620 | 10,650 | 10,080 | 9,300 | 8,860 | 8,250 | lb | | | | | | | | | | | | | | | | |
| 147.6 | 57.7 | 65.6 | 72.2 | 78.7 | 82.0 | 88.6 | 98.4 | 103.7 | 112.2 | 121.4 | 131.2 | 137.8 | 147.6 | ft | 26,460 | 22,750 | 20,350 | 18,360 | 17,500 | 15,960 | 14,070 | 13,230 | 13,230 | 12,100 | 11,090 | 10,490 | 9,700 | lb | | | | | | | | | | | | | | | | | | | | |
| 131.2 | 59.7 | 65.6 | 72.2 | 78.7 | 82.0 | 88.6 | 98.4 | 107.6 | 117.1 | 121.4 | 131.2 | ft | 26,460 | 23,770 | 21,270 | 19,200 | 18,300 | 16,710 | 14,730 | 13,230 | 13,230 | 12,700 | 11,640 | lb | | | | | | | | | | | | | | | | | | | | | | | | |
| 114.8 | 59.4 | 65.6 | 72.2 | 78.7 | 82.0 | 88.6 | 98.4 | 106.6 | 114.8 | ft | 26,460 | 23,570 | 21,100 | 19,050 | 18,140 | 16,580 | 14,590 | 13,230 | lb | | | | | | | | | | | | | | | | | | | | | | | | | | | | | |
| 98.4 | 61.0 | 65.6 | 72.2 | 78.7 | 82.0 | 88.6 | 96.4 | ft | 26,460 | 24,380 | 21,830 | 19,710 | 18,810 | 17,150 | 15,520 | lb | | | | | | | | | | | | | | | | | | | | | | | | | | | | | | | | |



Datos válidos hasta 328 ft de ABG. Para alturas mayores consultar / Valid data up to 328 ft HUH. Additional heights on request / Données valables jusqu'à 328 ft HSC. Pour des autres hauteurs, merci de nous consulter / Gültige Daten bis zu 328 ft HH. Bei höheren Hakenhöhen nachfragen / Dati validi fino a 328 ft ASG. Per altezze superiori consultare Comansa / Допустимые данные до 328 фут ВГК. Для более высоких высот консультируйтесь

MECANISMOS

Mechanisms / Mécanismes / Antriebe / Meccanismi / Механизмы



MECANISMOS

Mechanisms / Mécanismes / Antriebe / Meccanismi / Механизмы

| | |
|----------------|----------------|
| | CFU-7.5 |
| | 10 hp |
| 0 ⇔ 308 ft/min | |

| | |
|-------------|-----------------|
| | GFU-7.5 |
| | 2x 10 hp |
| 0 ⇔ 0,7 rpm | |

| | |
|--|--------------------|
| | TRA-7.5 |
| | 2x 55 ft·lb |
| | 78 ft/min |
| | 3XR52 |

| | |
|--|--------------------|
| | TRA-7.5 |
| | 2x 55 ft·lb |
| | 78 ft/min |
| | 5XR72 |

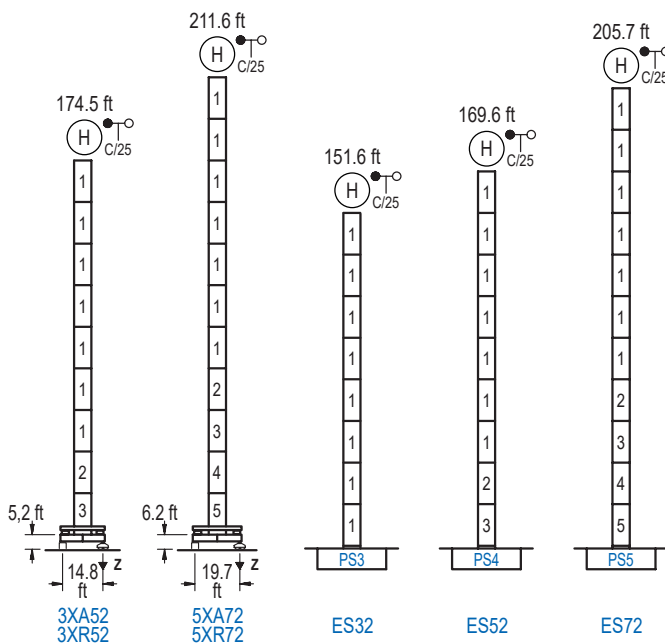
| Elevación / Hoist / Levage / Hub / Sollevamento / Тип механизма (подъем) | Carro / Trolley / Chariot / Laufkatze / Carrello / Грузовая тележка | Giro / Slewing / Rotation / Drehbewegung / Rotazione / Поворот | Traslación / Travel / Translation / Verfahrbewegung / Traslazione / Ход | Tensión de alimentación / Operating voltage / Tension de service / Betriebsspannung / Tensione di alimentazione / Напряжение источника питания | Potencia requerida / Required power / Puissance requise / Benötigte Leistung / Potenza richiesta / требуемая мощность |
|--|---|--|---|--|---|
| EFU4-37-30 | CFU-7.5 | (2x) GFU-7.5 | (2x) TRA-7.5 | 480 V | 55 kVA |
| EFU5-50-30 | | | | 3ph 60 Hz | 68 kVA |

| |
|--|
| Opcional / Optional / En option / Kaufoption / Opzionale / Опционально |
| * |

ALTURAS BAJO GANCHO

Heights under hook / Hauteurs sous crochet / Hakenhöhen / Altezza sotto gancio / Высота под крюком

∅ 6.6 ft

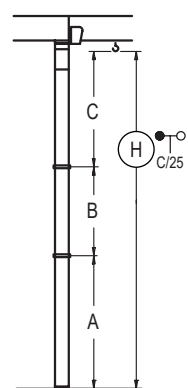


| n° | Ref. | ∅ | h |
|------------------|------|-----|------|
| 1 | S23 | 6.6 | 18.0 |
| 2 | TS24 | 6.6 | 18.0 |
| 3 | S24 | 6.6 | 18.0 |
| 4 | TS25 | 6.6 | 18.0 |
| 5 | S25 | 6.6 | 18.0 |
| 1x S23 = 1x S23M | | | |
| 1x S25 = 1x S25M | | | |

| Z máx. | En servicio / In operation / En service / In Betrieb / In servizio / При работе | 3XR52.. 203 kip 5XR72.. 207 kip |
|--------|--|------------------------------------|
| | Fuera de servicio / Out of service / Hors service / Ausser Betrieb / Fuori servizio / В стационарном состоянии | 3XR52.. 254 kip 5XR72.. 295 kip |

GRÚA ARRIOSTRADA

Braced crane / Grue à entretoisement / Abgespannter Kran / Gru ancorata / Нарастиваемый кран

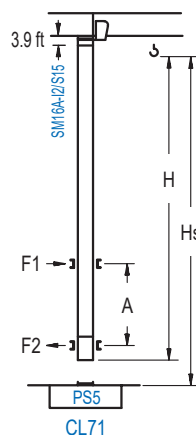


| | | |
|-------|--------------|--------------|
| | 3XA52 | 5XA72 |
| A max | 131.6 | 168.6 |
| A min | 59.4 | 96.6 |
| B max | - | 72.2 |
| B min | - | 54.1 |
| C max | 115.2 | 115.2 |
| H max | 246.7 | 318.9 |

| | | | |
|-------|-------------|-------------|-------------|
| | ES32 | ES52 | ES72 |
| A max | 108.6 | 126.6 | 162.7 |
| A min | 54.5 | 54.5 | 90.6 |
| B max | - | 72.2 | - |
| B min | - | 54.1 | - |
| C max | 115.2 | 115.2 | 115.2 |
| H max | 223.8 | 295.9 | 350.1 |

GRÚA TREPADORA

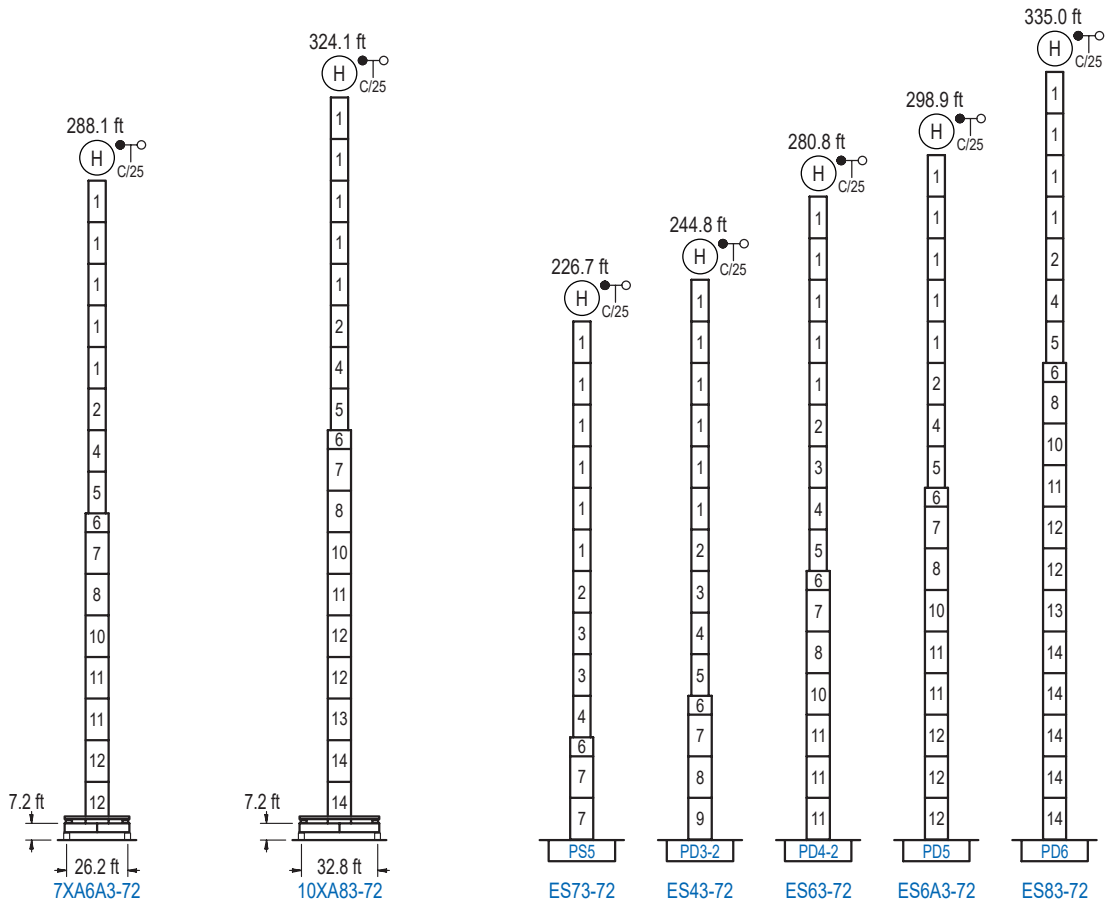
Internal climbing crane / Grue avec cage de télescage intérieure / Kran mit klettern im Gebäude / Gru in rampante in cavedio / Кран с самоподъемом



| | | | | |
|--|---------------|--------------------------------------|------------|------|
| | Hs < 1,310 ft | A max (ft) | A min (ft) | |
| | | 151.9 ft 8x S15 + CLS15-08 | 64.3 | 36.1 |
| | | 133.9 ft 7x S15 + CLS15-08 | 55.1 | 29.5 |
| | | 115.8 ft 6x S15 + CLS15-08 | 46.2 | 23.0 |

| Ref. | ∅ | h |
|------------------|-----|------|
| S15 | 5.2 | 18.0 |
| CLS15-08 | 5.2 | 10.2 |
| 1x S15 = 1x S15M | | |

Otras zonas de viento, alturas superiores, arriostramientos o trepado interno consultar / Other wind zones, additional hook heights, tie frames or internal climbing on request / Autres zones de vent, des hauteurs supplémentaires, entretoisements ou grues avec cage de télescage intérieure, sur demande / Andere Windzonen, weitere Hakenhöhen, Abspannungen zum Gebäude oder Klettern im Gebäude auf Anfrage / Per zone con velocità del vento particolari, altezze superiori, ancoraggi o rampante in cavedio, consultare il fabbricante / При других ветренных зонах, при большой высоте, привязках к зданию или наращивании крана внутри здания проконсультируйтесь с нами



| n° | Ref. | Ø | h | n° | Ref. | Ø | h | n° | Ref. | Ø | h | n° | Ref. | Ø | h |
|----|------|-----|------|----|----------|-----|------|----|-------|-----|------|----|-------|-----|------|
| | | | | | | | | | | | | | | | |
| 1 | S23 | 6.6 | 18.0 | 4 | TS25 | 6.6 | 18.0 | 7 | S35 | 8.2 | 18.0 | 11 | D34 | 8.2 | 18.0 |
| 2 | TS24 | 6.6 | 18.0 | 5 | S25 | 6.6 | 18.0 | 8 | TD33A | 8.2 | 18.0 | 12 | D35 | 8.2 | 18.0 |
| 3 | S24 | 6.6 | 18.0 | 6 | TMS35S25 | 8.2 | 3.3 | 9 | D33 | 8.2 | 18.0 | 13 | TD36B | 8.2 | 18.0 |
| | | | | | | | | 10 | TD34 | 8.2 | 18.0 | 14 | D36B | 8.2 | 18.0 |
| | | | | | | | | | | | | | | | |

Otras zonas de viento o alturas superiores consultar / Other wind zones or additional hook heights on request / Autres zones de vent ou des hauteurs supplémentaires sur demande / Andere Windzonen oder weitere Hakenhöhen auf Anfrage / Per zone con velocità del vento particolari o altezze superiori consultare il fabbricante / При других ветренных зонах о при большой высоте проконсультируйтесь с нами