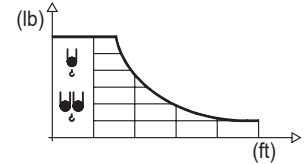


1600 Series

## DIAGRAMA DE CARGAS

Load chart / Diagramme de charges / Lastdiagramm / Diagramma di carico / Диаграмма распределения нагрузки

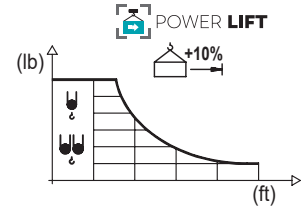
R (ft)	☺☺					☺																	
213.3	41.0	49.2	55.8	65.6	75.1	82.0	88.6	98.4	105.0	114.8	121.4	131.2	137.8	147.6	154.2	164.0	170.6	180.4	187.0	196.9	203.4	213.3	ft
	26,460	21,520	18,630	15,450	13,230	11,900	10,890	9,590	8,880	7,960	7,450	6,750	6,350	5,820	5,490	5,070	4,810	4,450	4,250	3,950	3,770	3,530	lb
196.9	44.3	49.2	55.8	65.6	72.2	81.0	88.6	98.4	105.0	114.8	121.4	131.2	137.8	147.6	154.2	164.0	170.6	180.4	187.0	196.9	ft		
	26,460	23,430	20,300	16,870	15,120	13,230	11,900	10,540	9,740	8,750	8,180	7,450	7,010	6,420	6,080	5,620	5,340	4,960	4,720	4,410	lb		
180.4	47.9	55.8	65.6	72.2	82.0	87.6	98.4	105.0	114.8	121.4	131.2	137.8	147.6	154.2	164.0	170.6	180.4	ft					
	26,460	22,180	18,430	16,530	14,290	13,230	11,550	10,710	9,630	9,020	8,200	7,740	7,100	6,720	6,220	5,930	5,510	lb					
164.0	52.5	65.6	72.2	82.0	88.6	96.8	105.0	114.8	121.4	131.2	137.8	147.6	154.2	164.0	ft								
	26,460	20,570	18,470	15,980	14,640	13,230	12,040	10,820	10,140	9,260	8,730	8,020	7,610	7,050	lb								
147.6	54.5	65.6	72.2	82.0	88.6	100.1	105.0	114.8	121.4	131.2	137.8	147.6	ft										
	26,460	21,380	19,200	16,620	15,210	13,230	12,520	11,290	10,580	9,660	9,100	8,380	lb										
131.2	56.8	65.6	72.2	82.0	88.6	98.4	104.3	114.8	121.4	131.2	ft												
	26,460	22,400	20,130	17,420	15,960	14,150	13,230	11,860	11,110	10,140	lb												
114.8	56.8	65.6	72.2	82.0	88.6	98.4	104.7	114.8	ft														
	26,460	22,510	20,220	17,500	16,030	14,220	13,230	11,900	lb														
98.4	58.7	65.6	72.2	82.0	88.6	98.4	ft																
	26,460	23,350	20,990	18,170	16,640	14,770	lb																



## DIAGRAMA DE CARGAS POWERLIFT

Load chart PowerLift / Diagramme de charges PowerLift / Lastdiagramm PowerLift / Diagramma di carico PowerLift / Диаграмма распределения нагрузки PowerLift

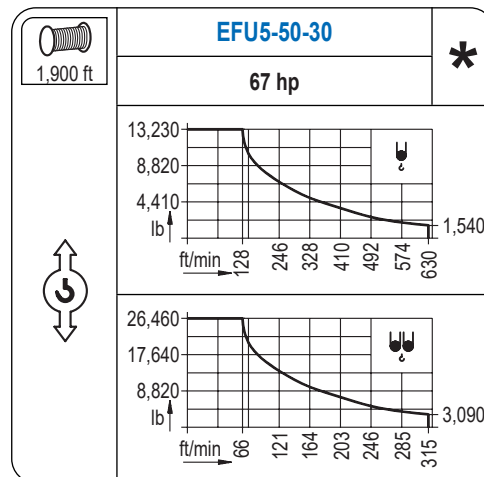
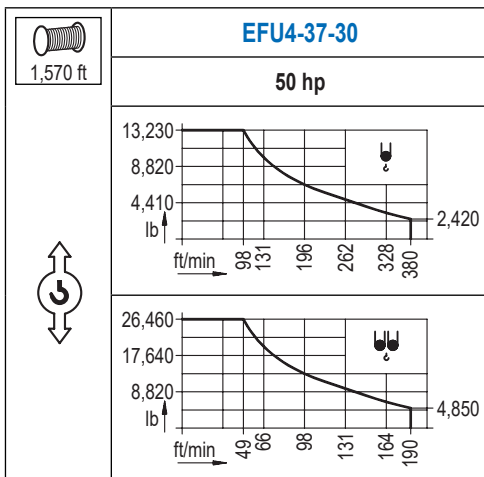
R (ft)	☺☺					☺																	
213.3	43.6	49.2	55.8	65.6	72.2	80.1	88.6	98.4	105.0	114.8	121.4	131.2	137.8	147.6	154.2	164.0	170.6	180.4	187.0	196.9	203.4	213.3	ft
	26,460	23,130	20,040	16,640	14,900	13,230	11,750	10,380	9,610	8,620	8,070	7,320	6,900	6,330	6,000	5,530	5,250	4,870	4,650	4,340	4,140	3,880	lb
196.9	47.2	55.8	65.6	72.2	82.0	86.9	98.4	105.0	114.8	121.4	131.2	137.8	147.6	154.2	164.0	170.6	180.4	187.0	196.9	ft			
	26,460	21,940	18,230	16,360	14,110	13,230	11,420	10,580	9,520	8,910	8,110	7,630	7,010	6,640	6,150	5,840	5,450	5,180	4,850	lb			
180.4	51.2	55.8	65.6	72.2	82.0	94.2	98.4	105.0	114.8	121.4	131.2	137.8	147.6	154.2	164.0	170.6	180.4	ft					
	26,460	24,050	20,020	17,970	15,520	13,230	12,590	11,680	10,520	9,850	8,970	8,470	7,780	7,390	6,830	6,500	6,060	lb					
164.0	56.8	65.6	72.2	82.0	88.6	98.4	104.3	114.8	121.4	131.2	137.8	147.6	154.2	164.0	ft								
	26,460	22,400	20,130	17,420	15,960	14,150	13,230	11,840	11,110	10,140	9,570	8,820	8,360	7,760	lb								
147.6	58.7	65.6	72.2	82.0	88.6	98.4	108.3	114.8	121.4	131.2	137.8	147.6	ft										
	26,460	23,320	20,970	18,140	16,640	14,770	13,230	12,370	11,600	10,580	10,010	9,220	lb										
131.2	61.4	72.2	82.0	88.6	98.4	113.2	114.8	121.4	131.2	ft													
	26,460	22,020	19,070	17,480	15,520	13,230	13,010	12,210	11,160	lb													
114.8	61.7	72.2	82.0	88.6	98.4	113.8	114.8	ft															
	26,460	22,130	19,180	17,590	15,610	13,230	13,100	lb															
98.4	63.6	72.2	82.0	88.6	98.4	ft																	
	26,460	23,020	19,950	18,300	16,250	lb																	



Datos válidos hasta 328 ft de ABG. Para alturas mayores consultar / Valid data up to 328 ft HUH. Additional heights on request / Données valables jusqu'à 328 ft HSC. Pour des autres hauteurs, merci de nous consulter / Gültige Daten bis zu 328 ft HH. Bei höheren Hakenhöhen nachfragen / Dati validi fino a 328 ft ASG. Per altezze superiori consultare Comansa / Допустимые данные до 328 фут ВПК. Для более высоких высот консультируйтесь

## MECANISMOS

Mechanisms / Mécanismes / Antriebe / Meccanismi / Механизмы



## MECANISMOS

Mechanisms / Mécanismes / Antriebe / Meccanismi / Механизмы

	<b>CFU-7.5</b>
	<b>10 hp</b>
0 ⇔ 308 ft/min	

	<b>GFU-7.5</b>
	<b>2x 10 hp</b>
0 ⇔ 0,7 rpm	

	<b>TRA-7.5</b>
	<b>2x 55 ft·lb</b>
	78 ft/min
	<b>3XR52</b>

	<b>TRA-7.5</b>
	<b>2x 55 ft·lb</b>
	78 ft/min
	<b>5XR72</b>

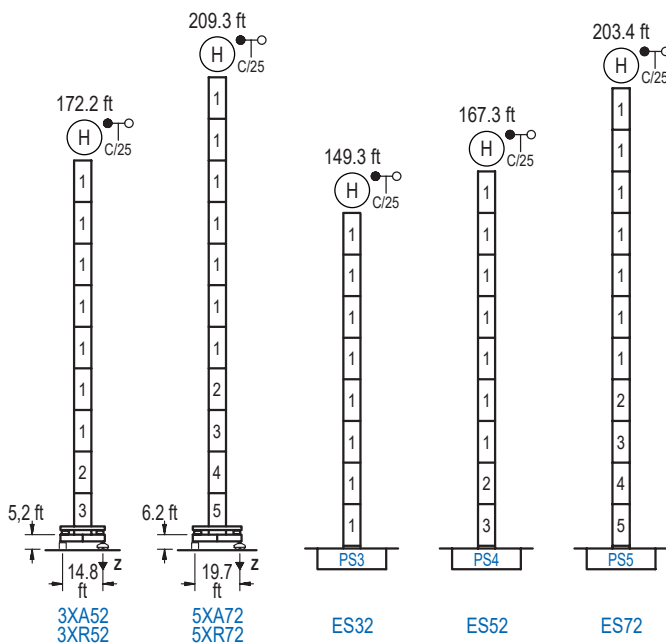
Elevación / Hoist / Levage / Hub / Sollevamento / Тип механизма (подъем)	Carro / Trolley / Chariot / Laufkatze / Carrello / Грузовая тележка	Giro / Slewing / Rotation / Drehbewegung / Rotazione / Поворот	Traslación / Travel / Translation / Verfahrbewegung / Traslazione / Ход	Tensión de alimentación / Operating voltage / Tension de service / Betriebsspannung / Tensione di alimentazione / Напряжение источника питания	Potencia requerida / Required power / Puissance requise / Benötigte Leistung / Potenza richiesta / требуемая мощность
EFU4-37-30	CFU-7.5	(2x) GFU-7.5	(2x) TRA-7.5	480 V	55 kVA
EFU5-50-30				3ph 60 Hz	68 kVA

Opcional / Optional / En option / Kaufoption / Opzionale / Опционально
<b>*</b>

## ALTURAS BAJO GANCHO

Heights under hook / Hauteurs sous crochet / Hakenhöhen / Altezza sotto gancio / Высота под крюком

∅ 6.6 ft

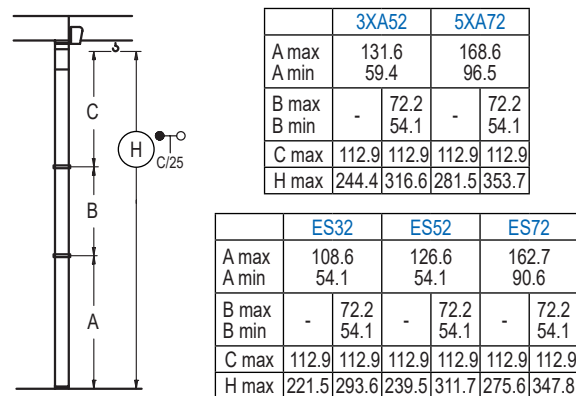


n°	Ref.	∅	h
1	S23	6.6	18.0
2	TS24	6.6	18.0
3	S24	6.6	18.0
4	TS25	6.6	18.0
5	S25	6.6	18.0
1x S23 = 1x S23M			
1x S25 = 1x S25M			

Z máx.	En servicio / In operation / En service / In Betrieb / In servizio / При работе	3XR52.. 203 kip 5XR72.. 207 kip
	Fuera de servicio / Out of service / Hors service / Ausser Betrieb / Fuori servizio / В стационарном состоянии	3XR52.. 254 kip 5XR72.. 295 kip

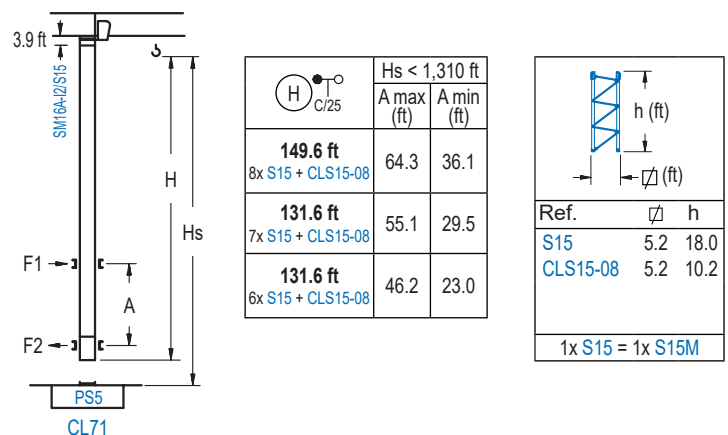
## GRÚA ARRIOSTRADA

Braced crane / Grue à entretoisement / Abgespannter Kran / Gru ancorata / Нарастиваемый кран

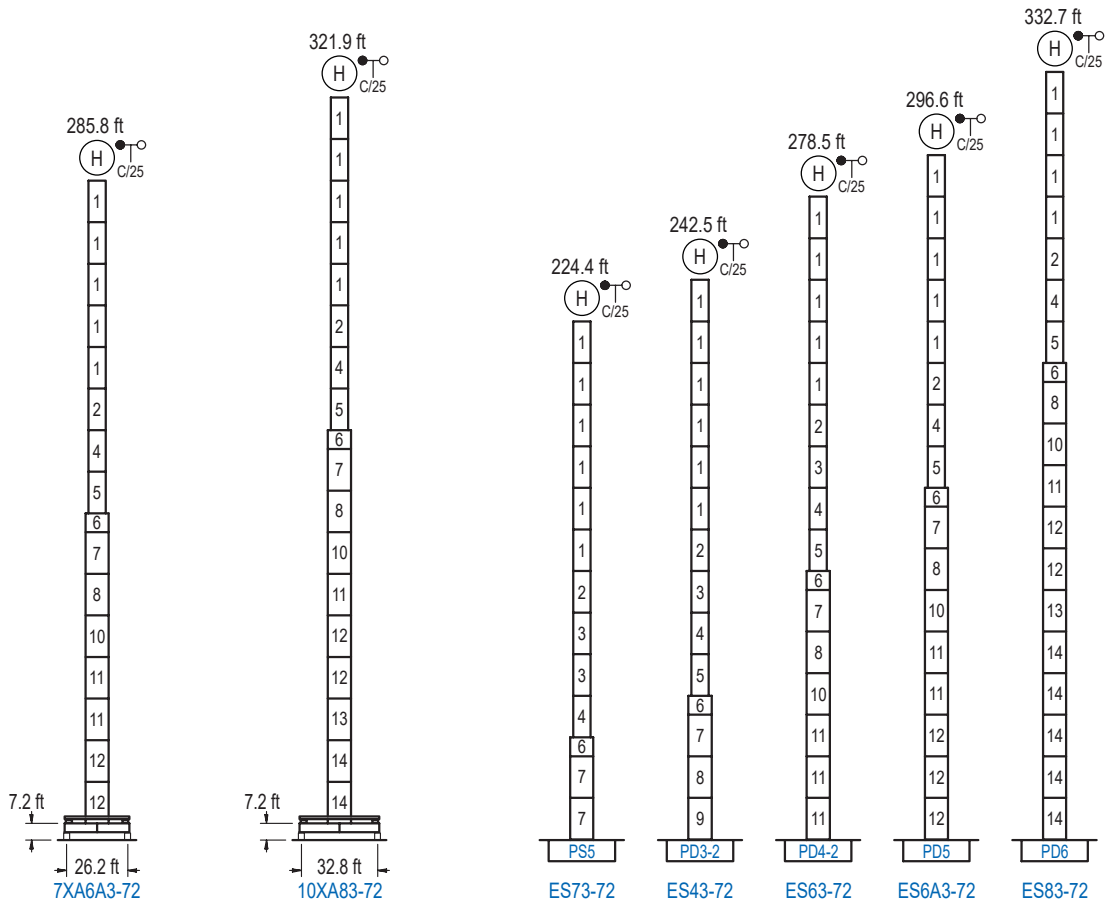


## GRÚA TREPADORA

Internal climbing crane / Grue avec cage de télescage intérieure / Kран mit klettern im Gebäude / Gru in rampante in cavedio / Кран с самоподъемом



Otras zonas de viento, alturas superiores, arriostramientos o trepado interno consultar / Other wind zones, additional hook heights, tie frames or internal climbing on request / Autres zones de vent, des hauteurs supplémentaires, entretoisements ou grues avec cage de télescage intérieure, sur demande / Andere Windzonen, weitere Hakenhöhen, Abspannungen zum Gebäude oder Klettern im Gebäude auf Anfrage / Per zone con velocità del vento particolari, altezze superiori, ancoraggi o rampante in cavedio, consultare il fabbricante / При других ветренных зонах, при большой высоте, привязках к зданию или наращивании крана внутри здания проконсультируйтесь с нами



n°	Ref.	Ø	h	n°	Ref.	Ø	h	n°	Ref.	Ø	h	n°	Ref.	Ø	h
1	S23	6.6	18.0	4	TS25	6.6	18.0	7	S35	8.2	18.0	11	D34	8.2	18.0
2	TS24	6.6	18.0	5	S25	6.6	18.0	8	TD33A	8.2	18.0	12	D35	8.2	18.0
3	S24	6.6	18.0	6	TMS35S25	8.2	3.3	9	D33	8.2	18.0	13	TD36B	8.2	18.0
								10	TD34	8.2	18.0	14	D36B	8.2	18.0
1x S23 = 1x S23M				1x S25 = 1x S25M				1x S35 = 1x S35M				1x D33 = 1x D33M			

Otras zonas de viento o alturas superiores consultar / Other wind zones or additional hook heights on request / Autres zones de vent ou des hauteurs supplémentaires sur demande / Andere Windzonen oder weitere Hakenhöhen auf Anfrage / Per zone con velocità del vento particolari o altezze superiori consultare il fabbricante / При других ветренных зонах о при большой высоте проконсультируйтесь с нами