

1600 Series

DIAGRAMA DE CARGAS

Load chart / Diagramme de charges / Lastdiagramm / Diagramma di carico / Диаграмма распределения нагрузки

R (ft)	🏠										🏢																																				
213.3	54.8	59.1	65.6	72.2	78.7	85.3	91.9	97.1	104.3	114.8	121.4	131.2	137.8	147.6	154.2	164.0	170.6	180.4	187.0	196.9	203.4	213.3	ft	22,050	20,170	17,790	15,870	14,260	12,940	11,790	11,020	11,020	9,900	9,280	8,490	8,020	7,410	7,030	6,530	6,240	5,820	5,580	5,250	5,030	4,740	lb	
196.9		60.4	65.6	72.2	78.7	85.3	91.9	98.4	107.0	115.8	121.4	131.2	137.8	147.6	154.2	164.0	170.6	180.4	187.0	196.9			ft	22,050	19,930	17,790	16,030	14,550	13,290	12,210	11,020	11,020	10,450	9,570	9,040	8,360	7,940	7,390	7,050	6,610	6,330	5,950			lb		
180.4			66.3	72.2	78.7	85.3	91.9	98.4	105.0	114.8	118.1	128.9	137.8	147.6	154.2	164.0	170.6	180.4					ft	22,050	20,000	18,030	16,400	15,010	13,800	12,760	11,420	11,020	11,020	10,230	9,460	8,990	8,380	8,000	7,500						lb		
164.0				71.9	78.7	85.3	91.9	98.4	105.0	114.8	121.4	128.3	140.7	147.6	154.2	164.0								ft	22,050	19,840	18,060	16,530	15,230	14,090	12,630	11,790	11,020	11,020	10,430	9,940	9,260										lb
147.6					73.8	78.7	85.3	91.9	98.4	105.0	114.8	121.4	131.6	145.0	147.6									ft	22,050	20,440	18,610	17,060	15,720	14,550	13,050	12,190	11,020	11,020	10,800												lb
131.2						74.8	78.7	85.3	91.9	98.4	105.0	114.8	121.4	129.2										ft	22,050	20,750	18,890	17,330	15,960	14,770	13,250	12,390	11,460														lb
114.8							76.4	78.7	85.3	91.9	98.4	105.0	112.8											ft	22,050	21,250	19,360	17,750	16,360	15,150	13,890																lb
98.4								74.5	78.7	85.3	91.9	96.4												ft	22,050	20,700	18,850	17,280	16,310																		lb

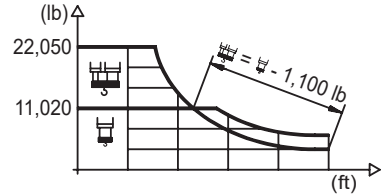
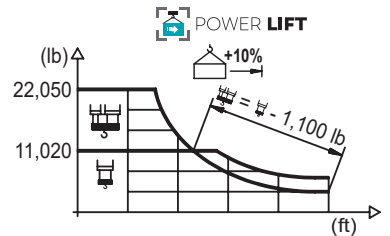


DIAGRAMA DE CARGAS POWERLIFT

Load chart PowerLift / Diagramme de charges PowerLift / Lastdiagramm PowerLift / Diagramma di carico PowerLift / Диаграмма распределения нагрузки PowerLift

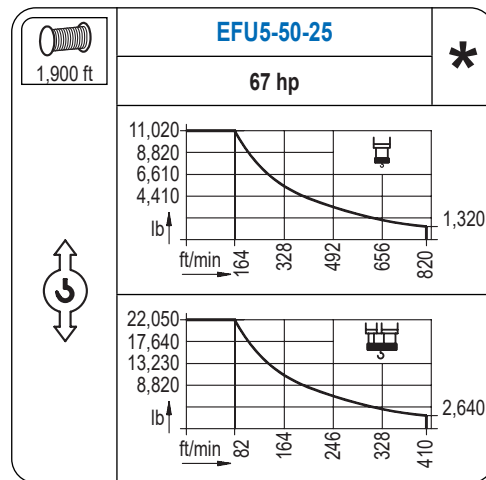
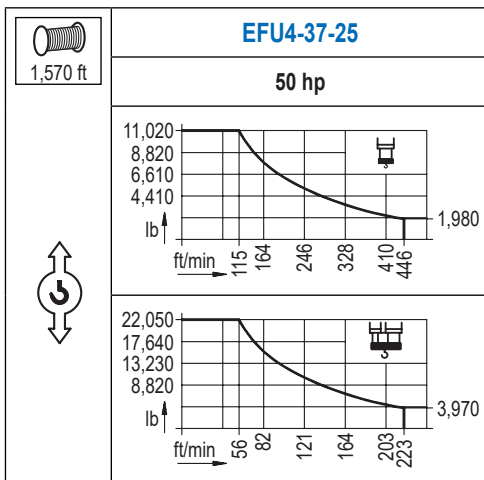
R (ft)	🏠										🏢																																				
213.3	58.7	65.6	72.2	78.7	85.3	91.9	98.4	104.3	112.5	121.4	131.2	137.8	147.6	154.2	164.0	170.6	180.4	187.0	196.9	203.4	213.3	ft	22,050	19,380	17,280	15,590	14,130	12,920	11,860	11,020	11,020	10,120	9,260	8,750	8,090	7,690	7,140	6,830	6,390	6,110	5,750	5,530	5,200	lb			
196.9		65.0	72.2	78.7	85.3	91.9	98.4	105.0	115.5	125.3	131.2	137.8	147.6	154.2	164.0	170.6	180.4	187.0	196.9				ft	22,050	19,440	17,550	15,960	14,590	13,400	12,390	11,020	11,020	10,470	9,900	9,150	8,710	8,110	7,740	7,250	6,970	6,550				lb		
180.4			71.9	78.7	85.3	91.9	98.4	105.0	114.8	121.4	128.0	139.8	147.6	154.2	164.0	170.6	180.4						ft	22,050	19,780	18,010	16,490	15,190	14,040	12,590	11,750	11,020	11,020	10,360	9,880	9,190	8,800	8,250							lb		
164.0				76.8	85.3	91.9	98.4	105.0	114.8	121.4	131.2	139.1	152.9	154.2	164.0									ft	22,050	19,840	18,190	16,780	15,540	13,960	13,050	11,860	11,020	11,020	10,910	10,190											lb
147.6					79.4	85.3	91.9	98.4	105.0	114.8	121.4	131.2	141.7	147.6										ft	22,050	20,300	18,610	17,150	15,900	14,290	13,360	12,150	11,020	11,020	11,020												lb
131.2						80.7	85.3	91.9	98.4	105.0	114.8	121.4	129.2											ft	22,050	20,660	18,960	17,480	16,180	14,550	13,600	12,610															lb
114.8							82.7	85.3	91.9	98.4	105.0	112.8												ft	22,050	21,210	19,470	17,950	16,640	15,280																	lb
98.4								80.7	85.3	91.9	96.4													ft	22,050	20,700	18,980	17,950																			lb



Datos válidos hasta 328 ft de ABG. Para alturas mayores consultar / Valid data up to 328 ft HUH. Additional heights on request / Données valables jusqu'à 328 ft HSC. Pour des autres hauteurs, merci de nous consulter / Gültige Daten bis zu 328 ft HH. Bei höheren Hakenhöhen nachfragen / Dati validi fino a 328 ft ASG. Per altezze superiori consultare Comansa / Допустимые данные до 328 фут ВПК. Для более высоких высот консультируйтесь

MECANISMOS

Mechanisms / Mécanismes / Antriebe / Meccanismi / Механизмы



MECANISMOS

Mechanisms / Mécanismes / Antriebe / Meccanismi / Механизмы

	CFU-7.5
	10 hp
0 ⇔ 308 ft/min	

	GFU-7.5
	2x 10 hp
0 ⇔ 0,7 rpm	

	TRA-7.5
	2x 55 ft·lb
	78 ft/min
	3XR52

	TRA-7.5
	2x 55 ft·lb
	78 ft/min
	5XR72

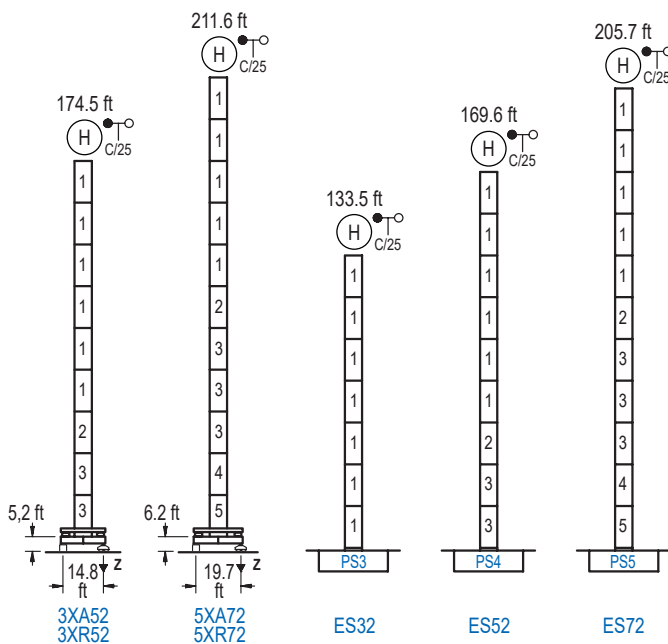
Elevación / Hoist / Levage / Hub / Sollevamento / Тип механизма (подъем)	Carro / Trolley / Chariot / Laufkatze / Carrello / Грузовая тележка	Giro / Slewing / Rotation / Drehbewegung / Rotazione / Поворот	Traslación / Travel / Translation / Verfahrbewegung / Traslazione / Ход	Tensión de alimentación / Operating voltage / Tension de service / Betriebsspannung / Tensione di alimentazione / Напряжение источника питания	Potencia requerida / Required power / Puissance requise / Benötigte Leistung / Potenza richiesta / требуемая мощность
EFU4-37-25	CFU-7.5	(2x) GFU-7.5	(2x) TRA-7.5	480 V	55 kVA
EFU5-50-25				3ph 60 Hz	68 kVA

Opcional / Optional / En option / Kaufoption / Opzionale / Опционально
*

ALTURAS BAJO GANCHO

Heights under hook / Hauteurs sous crochet / Hakenhöhen / Altezza sotto gancio / Высота под крюком

∅ 6.6 ft

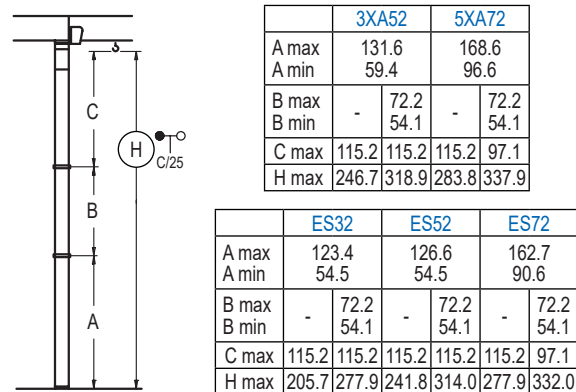


	n°	Ref.	∅	h
	1	S23	6.6	18.0
	2	TS24	6.6	18.0
	3	S24	6.6	18.0
	4	TS25	6.6	18.0
	5	S25	6.6	18.0
	1x S23 = 1x S23M			
	1x S25 = 1x S25M			

Z máx.	En servicio / In operation / En service / In Betrieb / In servizio / При работе	3XR52.. 216 kip 5XR72.. 212 kip
	Fuera de servicio / Out of service / Hors service / Ausser Betrieb / Fuori servizio / В стационарном состоянии	3XR52.. 254 kip 5XR72.. 295 kip

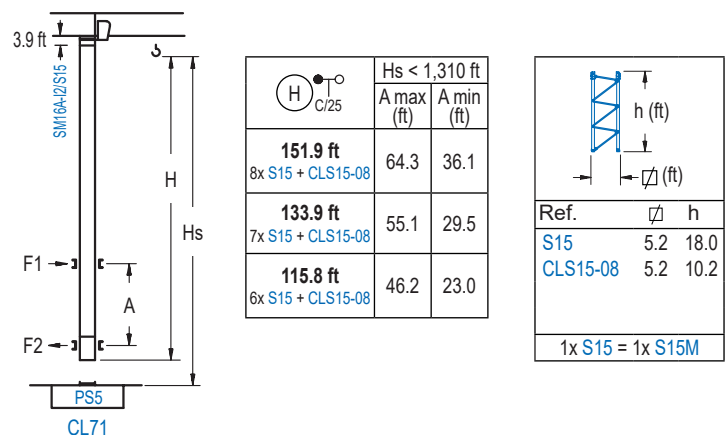
GRÚA ARRIOSTRADA

Braced crane / Grue à entretoisement / Abgespannter Kran / Gru ancorata / Нарастиваемый кран

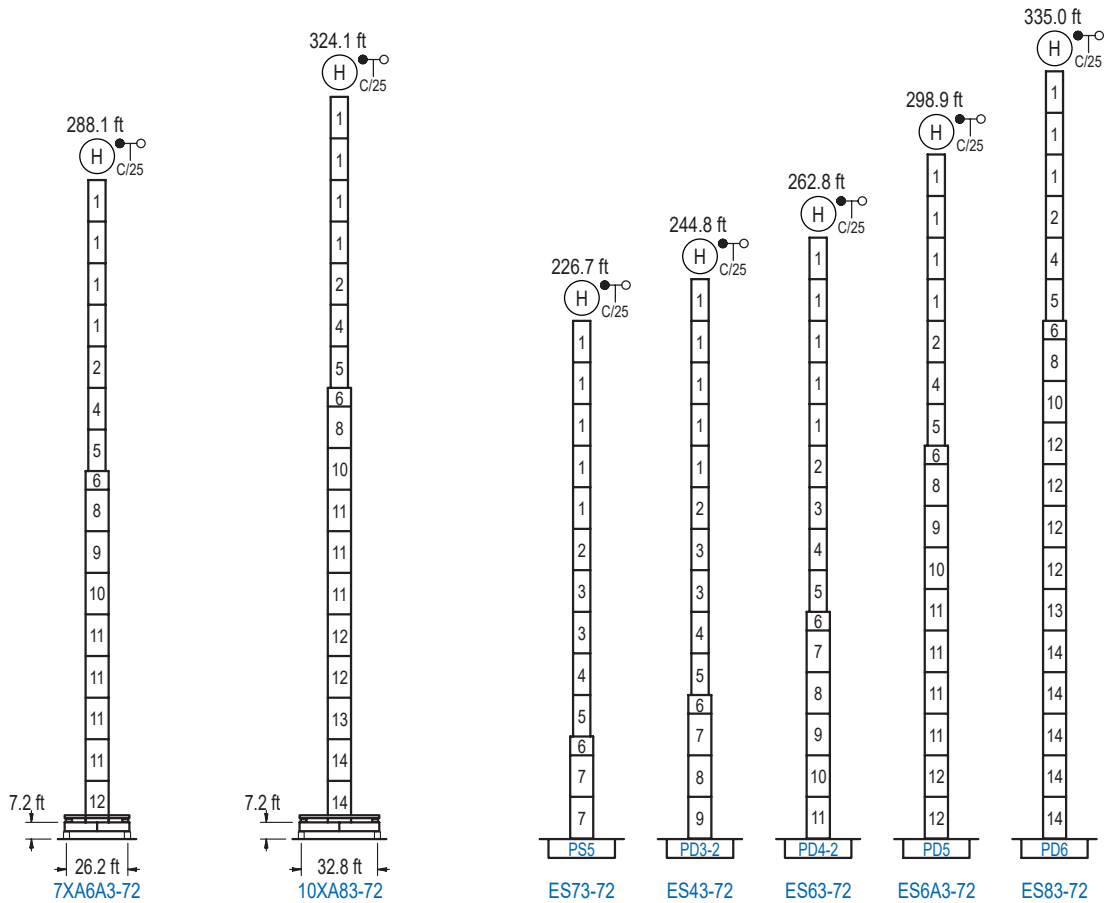


GRÚA TREPADORA

Internal climbing crane / Grue avec cage de télescage intérieure / Kran mit klettern im Gebäude / Gru in rampante in cavedio / Кран с самоподъемом



Otras zonas de viento, alturas superiores, arriostramientos o trepado interno consultar / Other wind zones, additional hook heights, tie frames or internal climbing on request / Autres zones de vent, des hauteurs supplémentaires, entretoisements ou grues avec cage de télescage intérieure, sur demande / Andere Windzonen, weitere Hakenhöhen, Abspannungen zum Gebäude oder Klettern im Gebäude auf Anfrage / Per zone con velocità del vento particolari, altezze superiori, ancoraggi o rampante in cavedio, consultare il fabbricante / При других ветренных зонах, при большой высоте, привязках к зданию или наращивании крана внутри здания проконсультируйтесь с нами



n°	Ref.	∅	h	n°	Ref.	∅	h	n°	Ref.	∅	h	n°	Ref.	∅	h
1	S23	6.6	18.0	4	TS25	6.6	18.0	7	S35	8.2	18.0	11	D34	8.2	18.0
2	TS24	6.6	18.0	5	S25	6.6	18.0	8	TD33A	8.2	18.0	12	D35	8.2	18.0
3	S24	6.6	18.0	6	TMS35S25	8.2	3.3	9	D33	8.2	18.0	13	TD36B	8.2	18.0
								10	TD34	8.2	18.0	14	D36B	8.2	18.0
1x S23 = 1x S23M				1x S25 = 1x S25M				1x S35 = 1x S35M				1x D33 = 1x D33M			

Otras zonas de viento o alturas superiores consultar / Other wind zones or additional hook heights on request / Autres zones de vent ou des hauteurs supplémentaires sur demande / Andere Windzonen oder weitere Hakenhöhen auf Anfrage / Per zone con velocità del vento particolari o altezze superiori consultare il fabbricante / При других ветренных зонах о при большой высоте проконсультируйтесь с нами