

1600 Series

DIAGRAMA DE CARGAS

Load chart / Diagramme de charges / Lastdiagramm / Diagramma di carico / Диаграмма распределения нагрузки

R (ft)	Icon 1											Icon 2																																		
213.3	46.9	59.1	65.6	72.2	78.7	83.7	88.9	98.4	105.0	114.8	121.4	131.2	137.8	147.6	154.2	164.0	170.6	180.4	187.0	196.9	203.4	213.3	ft	26,460	20,170	17,790	15,870	14,260	13,230	13,230	11,790	10,960	9,900	9,280	8,490	8,020	7,410	7,030	6,530	6,240	5,820	5,580	5,250	5,030	4,740	lb
196.9	51.5	59.1	65.6	72.2	78.7	85.3	92.2	98.8	105.0	114.8	121.4	131.2	137.8	147.6	154.2	164.0	170.6	180.4	187.0	196.9	ft	26,460	22,550	19,930	17,790	16,030	14,550	13,230	13,230	12,320	11,130	10,450	9,570	9,040	8,360	7,940	7,390	7,050	6,610	6,330	5,950	lb				
180.4	56.8	65.6	72.2	78.7	85.3	91.9	102.0	109.6	114.8	121.4	131.2	137.8	147.6	154.2	164.0	170.6	180.4	ft	26,460	22,350	20,000	18,030	16,400	15,010	13,230	13,230	12,570	11,790	10,800	10,230	9,460	8,990	8,380	8,000	7,500	lb										
164.0	61.4	65.6	72.2	78.7	85.3	91.9	98.4	110.6	119.4	121.4	131.2	137.8	147.6	154.2	164.0	ft	26,460	24,520	21,960	19,840	18,060	16,530	15,230	13,230	13,230	13,010	11,930	11,290	10,430	9,940	9,260	lb														
147.6	63.0	72.2	78.7	85.3	91.9	98.4	105.0	113.5	123.7	131.2	137.8	147.6	ft	26,460	22,620	20,440	18,610	17,060	15,720	14,550	13,230	13,230	12,320	11,680	10,800	lb																				
131.2	64.0	72.2	78.7	85.3	91.9	98.4	105.0	115.2	125.3	131.2	ft	26,460	22,970	20,750	18,890	17,330	15,960	14,770	13,230	13,230	12,570	lb																								
114.8	65.3	72.2	78.7	85.3	91.9	98.4	105.0	112.8	ft	26,460	23,500	21,250	19,360	17,750	16,360	15,150	13,890	lb																												
98.4	63.6	72.2	78.7	85.3	91.9	96.4	ft	26,460	22,910	20,700	18,850	17,280	16,310	lb																																

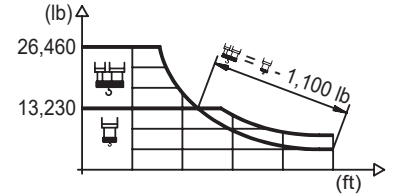
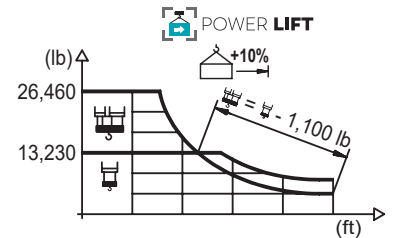


DIAGRAMA DE CARGAS POWERLIFT

Load chart PowerLift / Diagramme de charges PowerLift / Lastdiagramm PowerLift / Diagramma di carico PowerLift / Диаграмма распределения нагрузки PowerLift

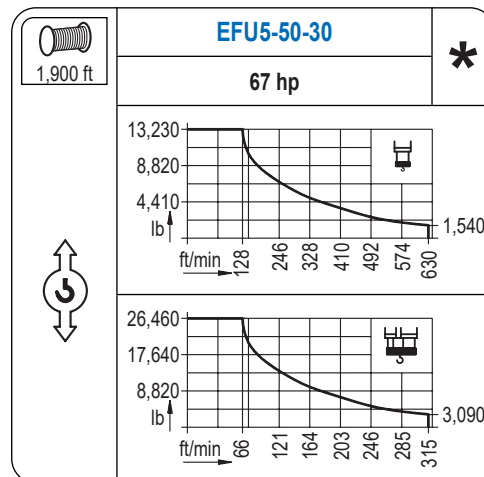
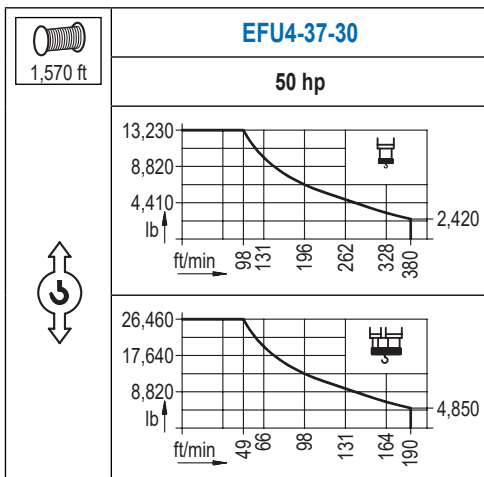
R (ft)	Icon 1											Icon 2																																		
213.3	50.5	59.1	65.6	72.2	78.7	85.3	90.2	95.8	105.0	114.8	121.4	131.2	137.8	147.6	154.2	164.0	170.6	180.4	187.0	196.9	203.4	213.3	ft	26,460	21,940	19,380	17,280	15,590	14,130	13,230	13,230	11,950	10,780	10,120	9,260	8,750	8,090	7,690	7,140	6,830	6,390	6,110	5,750	5,530	5,200	lb
196.9	55.4	59.1	65.6	72.2	78.7	85.3	91.9	99.7	106.6	114.8	121.4	131.2	137.8	147.6	154.2	164.0	170.6	180.4	187.0	196.9	ft	26,460	24,600	21,760	19,440	17,550	15,960	14,590	13,230	13,230	12,170	11,440	10,470	9,900	9,150	8,710	8,110	7,740	7,250	6,970	6,550	lb				
180.4	61.4	65.6	72.2	78.7	85.3	91.9	98.4	105.0	110.2	118.8	131.2	137.8	147.6	154.2	164.0	170.6	180.4	ft	26,460	24,450	21,890	19,780	18,010	16,490	15,190	14,040	13,230	13,230	11,840	11,200	10,360	9,880	9,190	8,800	8,250	lb										
164.0	66.6	72.2	78.7	85.3	91.9	98.4	105.0	114.8	120.1	129.9	137.8	147.6	154.2	164.0	ft	26,460	24,100	21,780	19,840	18,190	16,780	15,540	13,960	13,230	13,230	12,390	11,460	10,910	10,190	lb																
147.6	68.2	72.2	78.7	85.3	91.9	98.4	105.0	114.8	123.4	134.2	137.8	147.6	ft	26,460	24,870	22,490	20,480	18,780	17,330	16,050	14,420	13,230	13,230	12,830	11,880	lb																				
131.2	68.9	78.7	85.3	91.9	98.4	105.0	114.8	124.0	131.2	ft	26,460	22,660	20,660	18,960	17,480	16,180	14,550	13,230	lb																											
114.8	70.5	78.7	85.3	91.9	98.4	105.0	112.8	ft	26,460	23,280	21,210	19,470	17,950	16,640	15,280	lb																														
98.4	68.9	78.7	85.3	91.9	96.4	ft	26,460	22,710	20,700	18,980	17,950	lb																																		



Datos válidos hasta 328 ft de ABG. Para alturas mayores consultar / Valid data up to 328 ft HUH. Additional heights on request / Données valables jusqu'à 328 ft HSC. Pour des autres hauteurs, merci de nous consulter / Gültige Daten bis zu 328 ft HH. Bei höheren Hakenhöhen nachfragen / Dati validi fino a 328 ft ASG. Per altezze superiori consultare Comansa / Допустимые данные до 328 фут ВГК. Для более высоких высот консультируйтесь

MECANISMOS

Mechanisms / Mécanismes / Antriebe / Meccanismi / Механизмы



MECANISMOS

Mechanisms / Mécanismes / Antriebe / Meccanismi / Механизмы

	CFU-7.5
	10 hp
0 ⇔ 308 ft/min	

	GFU-7.5
	2x 10 hp
0 ⇔ 0,7 rpm	

	TRA-7.5
	2x 55 ft·lb
	78 ft/min
	3XR52

	TRA-7.5
	2x 55 ft·lb
	78 ft/min
	5XR72

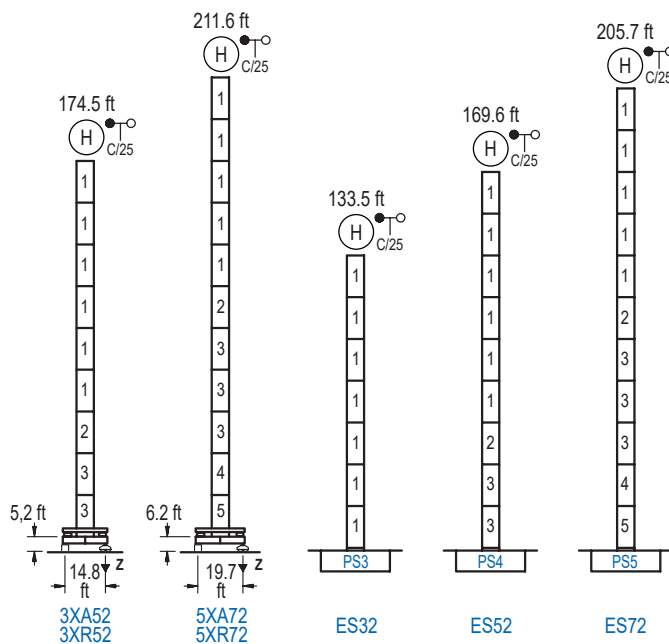
Elevación / Hoist / Levage / Hub / Sollevamento / Тип механизма (подъем)	Carro / Trolley / Chariot / Laufkatze / Carrello / Грузовая тележка	Giro / Slewing / Rotation / Drehbewegung / Rotazione / Поворот	Traslación / Travel / Translation / Verfahrbewegung / Traslazione / Ход	Tensión de alimentación / Operating voltage / Tension de service / Betriebsspannung / Tensione di alimentazione / Напряжение источника питания	Potencia requerida / Required power / Puissance requise / Benötigte Leistung / Potenza richiesta / требуемая мощность
EFU4-37-30	CFU-7.5	(2x) GFU-7.5	(2x) TRA-7.5	480 V	55 kVA
EFU5-50-30				3ph 60 Hz	68 kVA

Opcional / Optional / En option / Kaufoption / Opzionale / Опционально
*

ALTURAS BAJO GANCHO

Heights under hook / Hauteurs sous crochet / Hakenhöhen / Altezza sotto gancio / Высота под крюком

∅ 6.6 ft

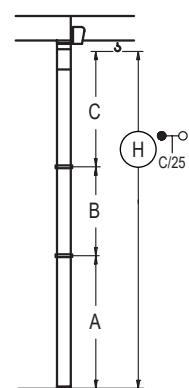


	n°	Ref.	∅	h
	1	S23	6.6	18.0
	2	TS24	6.6	18.0
	3	S24	6.6	18.0
	4	TS25	6.6	18.0
	5	S25	6.6	18.0
	1x S23 = 1x S23M			
	1x S25 = 1x S25M			

Z máx.	En servicio / In operation / En service / In Betrieb / In servizio / При работе	3XR52.. 220 kip 5XR72.. 214 kip
	Fuera de servicio / Out of service / Hors service / Ausser Betrieb / Fuori servizio / В стационарном состоянии	3XR52.. 254 kip 5XR72.. 295 kip

GRÚA ARRIOSTRADA

Braced crane / Grue à entretoisement / Abgespannter Kran / Gru ancorata / Нарастиваемый кран

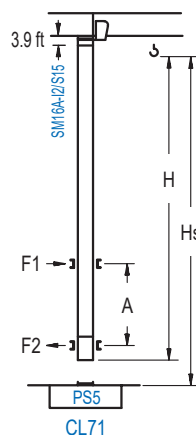


	3XA52	5XA72
A max	131.6	168.6
A min	59.4	96.6
B max	72.2	72.2
B min	54.1	54.1
C max	115.2	115.2
H max	246.7	318.9

	ES32	ES52	ES72
A max	123.4	126.6	162.7
A min	54.5	54.5	90.6
B max	72.2	72.2	72.2
B min	54.1	54.1	54.1
C max	115.2	115.2	115.2
H max	205.7	277.9	332.0

GRÚA TREPADORA

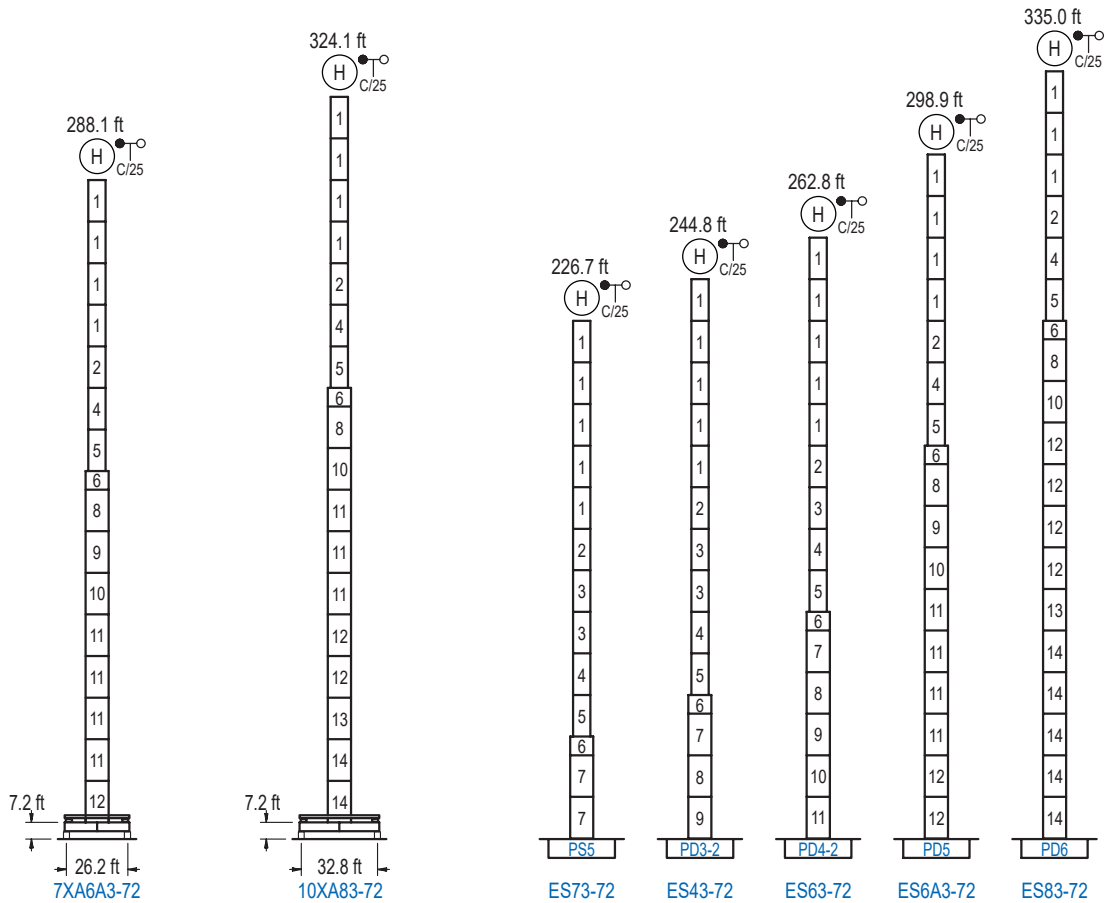
Internal climbing crane / Grue avec cage de télescopage intérieure / Kran mit klettern im Gebäude / Gru in rampante in cavedio / Кран с самоподъемом



	Hs < 1,310 ft	A max (ft)	A min (ft)	
		151.9 ft 8x S15 + CLS15-08	64.3	36.1
		133.9 ft 7x S15 + CLS15-08	55.1	29.5
		115.8 ft 6x S15 + CLS15-08	46.2	23.0

	h (ft)	∅ (ft)
Ref.	∅	h
S15	5.2	18.0
CLS15-08	5.2	10.2
1x S15 = 1x S15M		

Otras zonas de viento, alturas superiores, arriostramientos o trepado interno consultar / Other wind zones, additional hook heights, tie frames or internal climbing on request / Autres zones de vent, des hauteurs supplémentaires, entretoisements ou grues avec cage de télescopage intérieure, sur demande / Andere Windzonen, weitere Hakenhöhen, Abspannungen zum Gebäude oder Klettern im Gebäude auf Anfrage / Per zone con velocità del vento particolari, altezze superiori, ancoraggi o rampante in cavedio, consultare il fabbricante / При других ветренных зонах, при большой высоте, привязках к зданию или наращивании крана внутри здания проконсультируйтесь с нами



n°	Ref.	∅	h	n°	Ref.	∅	h	n°	Ref.	∅	h	n°	Ref.	∅	h
2	TS24	6.6	18.0	5	S25	6.6	18.0	8	TD33A	8.2	18.0	12	D35	8.2	18.0
3	S24	6.6	18.0	6	TMS35S25	8.2	3.3	9	D33	8.2	18.0	13	TD36B	8.2	18.0
								10	TD34	8.2	18.0	14	D36B	8.2	18.0
1x S23 = 1x S23M				1x S25 = 1x S25M				1x S35 = 1x S35M				1x D33 = 1x D33M			

Otras zonas de viento o alturas superiores consultar / Other wind zones or additional hook heights on request / Autres zones de vent ou des hauteurs supplémentaires sur demande / Andere Windzonen oder weitere Hakenhöhen auf Anfrage / Per zone con velocità del vento particolari o altezze superiori consultare il fabbricante / При других ветренных зонах о при большой высоте проконсультируйтесь с нами