

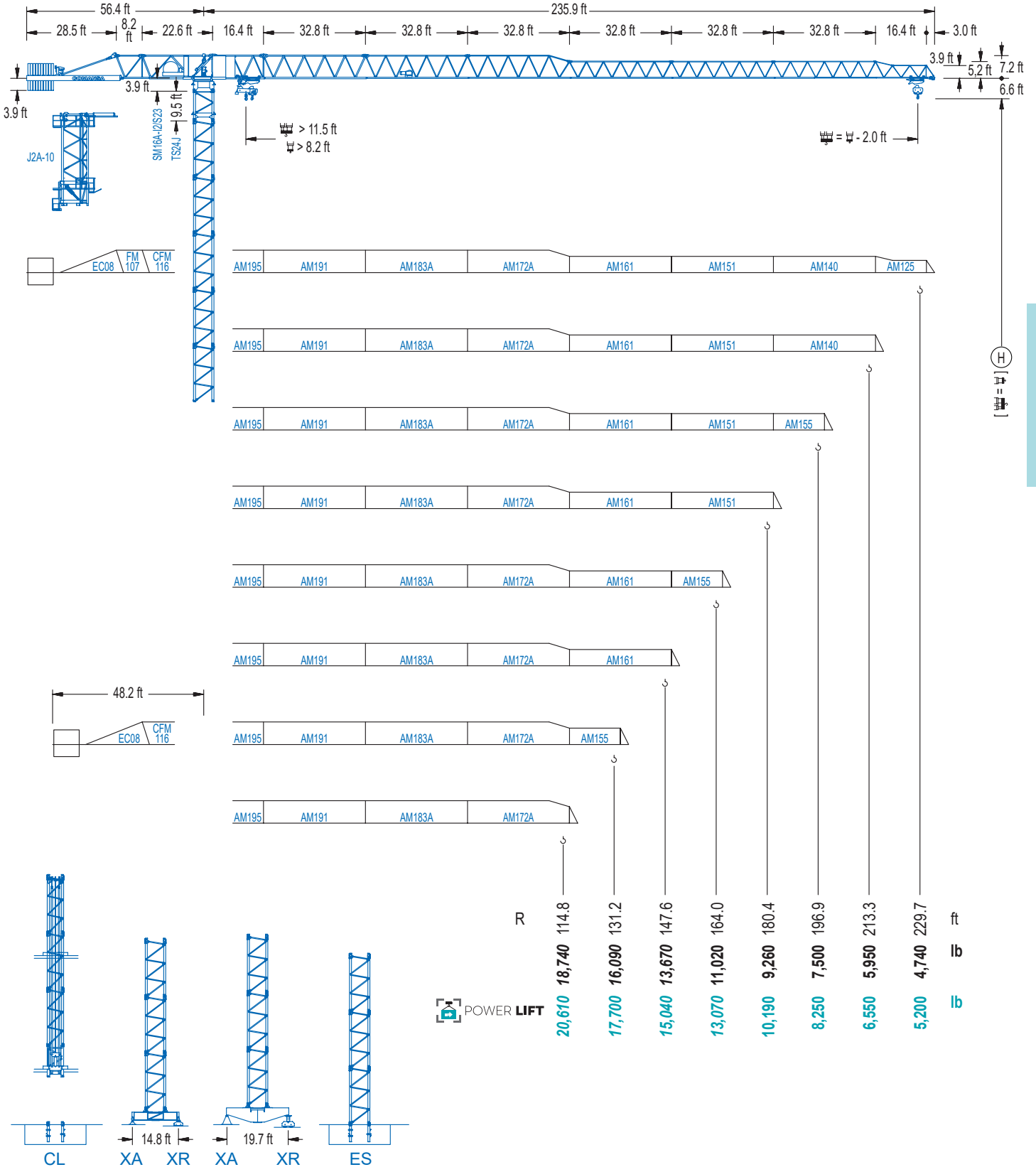


COMANSA

1600 Series

16 LC 260

DT 22,050 lb



1600 Series

CE EN 14439 (C/25)

DIAGRAMA DE CARGAS

Load chart / Diagramme de charges / Lastdiagramm / Diagramma di carico / Диаграмма распределения нагрузки

R (ft)																																																
229.7	58.7	65.6	72.2	82.0	88.6	98.4	104.3	112.5	121.4	131.2	137.8	147.6	154.2	164.0	170.6	180.4	187.0	196.9	203.4	213.3	219.8	229.7	ft	22,050	19,380	17,310	14,840	13,510	11,860	11,020	11,020	10,100	9,240	8,730	8,070	7,670	7,120	6,790	6,370	6,080	5,730	5,510	5,200	5,000	4,740	lb		
213.3		65.0	72.2	82.0	88.6	98.4	105.0	115.8	125.3	131.2	137.8	147.6	154.2	164.0	170.6	180.4	187.0	196.9	203.4	213.3			ft	22,050	19,530	16,780	15,300	13,470	12,430	11,020	11,020	10,470	9,920	9,170	8,710	8,110	7,760	7,250	6,970	6,550	6,310	5,950			lb			
196.9			72.2	82.0	88.6	98.4	105.0	114.8	121.4	128.9	140.4	147.6	154.2	164.0	170.6	180.4	187.0	196.9					ft	22,050	19,030	17,370	15,320	14,180	12,720	11,860	11,020	11,020	10,430	9,920	9,260	8,840	8,290	7,960	7,500							lb		
180.4				79.1	88.6	98.4	105.0	114.8	121.4	131.2	137.8	141.1	154.9	164.0	170.6	180.4								ft	22,050	19,290	17,040	15,780	14,200	13,270	12,060	11,350	11,020	11,020	10,320	9,880	9,260											lb
164.0					89.2	98.4	105.0	114.8	121.4	131.2	137.8	147.6	159.4	164.0										ft	22,050	19,640	18,210	16,400	15,340	13,980	13,180	12,130	11,020	11,020														lb
147.6						96.8	105.0	114.8	121.4	131.2	137.8	145.6												ft	22,050	20,110	18,100	16,980	15,480	14,590	13,670																	lb
131.2							98.8	105.0	114.8	121.4	129.2													ft	22,050	20,500	18,470	17,330	16,090																			lb
114.8								98.1	105.0	112.8														ft	22,050	20,370	18,740																					lb

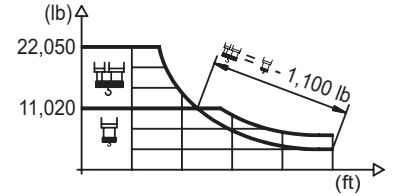
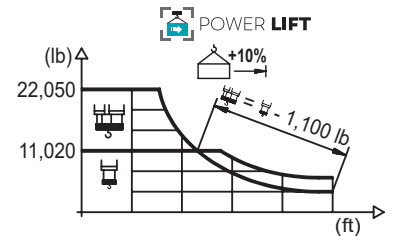


DIAGRAMA DE CARGAS POWERLIFT

Load chart PowerLift / Diagramme de charges PowerLift / Lastdiagramm PowerLift / Diagramma di carico PowerLift / Диаграмма распределения нагрузки PowerLift

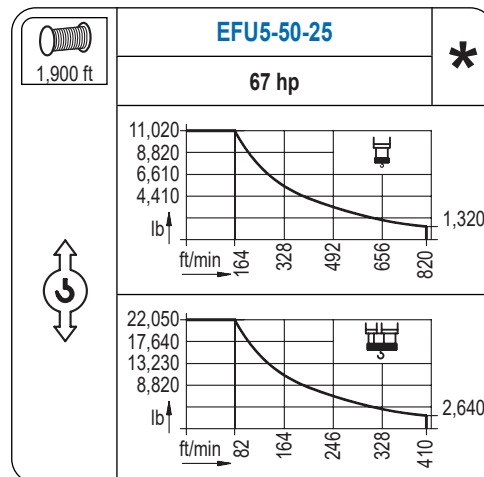
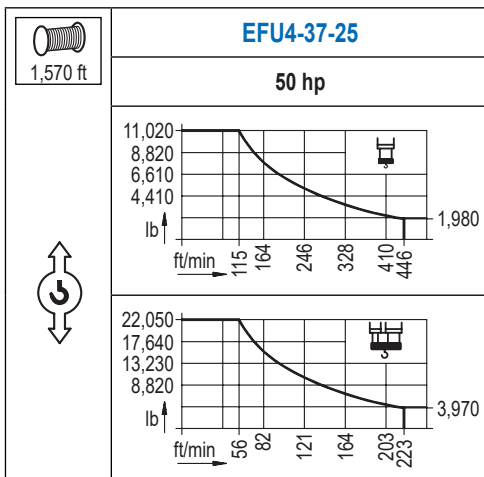
R (ft)																																																
229.7	63.3	65.6	72.2	82.0	88.6	98.4	105.0	112.2	121.1	131.2	137.8	147.6	154.2	164.0	170.6	180.4	187.0	196.9	203.4	213.3	219.8	229.7	ft	22,050	21,100	18,850	16,180	14,750	12,990	11,990	11,020	11,020	10,080	9,520	8,800	8,380	7,800	7,450	6,970	6,680	6,280	6,040	5,710	5,510	5,200	lb		
213.3		70.2	72.2	82.0	88.6	98.4	105.0	114.8	125.0	135.8	137.8	147.6	154.2	164.0	170.6	180.4	187.0	196.9	203.4	213.3			ft	22,050	21,320	18,340	16,750	14,770	13,670	12,240	11,020	11,020	10,850	10,030	9,550	8,880	8,510	7,960	7,650	7,190	6,920	6,550			lb			
196.9			78.1	82.0	88.6	98.4	105.0	114.8	121.4	131.2	139.4	152.6	154.2	164.0	170.6	180.4	187.0	196.9					ft	22,050	20,860	19,050	16,840	15,590	14,000	13,100	11,900	11,020	11,020	10,890	10,160	9,700	9,100	8,750	8,250							lb		
180.4				85.6	98.4	105.0	114.8	121.4	131.2	137.8	147.6	153.2	168.3	170.6	180.4									ft	22,050	18,760	17,390	15,650	14,640	13,320	12,570	11,530	11,020	11,020	10,850	10,190												lb
164.0					103.7	114.8	121.4	131.2	137.8	147.6	154.2	162.0												ft	22,050	19,620	18,410	16,800	15,870	14,620	13,870	13,070																lb
147.6						104.7	114.8	121.4	131.2	137.8	145.6													ft	22,050	19,840	18,610	17,000	16,050	15,040																		lb
131.2							107.0	114.8	121.4	129.2														ft	22,050	20,300	19,030	17,700																				lb
114.8								106.3	112.8															ft	22,050	20,610																						lb



Datos válidos hasta 328 ft de ABG. Para alturas mayores consultar / Valid data up to 328 ft HUH. Additional heights on request / Données valables jusqu'à 328 ft HSC. Pour des autres hauteurs, merci de nous consulter / Gültige Daten bis zu 328 ft HH. Bei höheren Hakenhöhen nachfragen / Dati validi fino a 328 ft ASG. Per altezze superiori consultare Comansa / Допустимые данные до 328 фут ВПК. Для более высоких высот консультируйтесь

MECANISMOS

Mechanisms / Mécanismes / Antriebe / Meccanismi / Механизмы



MECANISMOS

Mechanisms / Mécanismes / Antriebe / Meccanismi / Механизмы

	CFU-7.5
	10 hp
0 ⇔ 308 ft/min	

	GFU-7.5
	2x 10 hp
0 ⇔ 0,7 rpm	

	TRA-7.5
	2x 55 ft·lb
	78 ft/min
	3XR52

	TRA-7.5
	2x 55 ft·lb
	78 ft/min
	5XR72

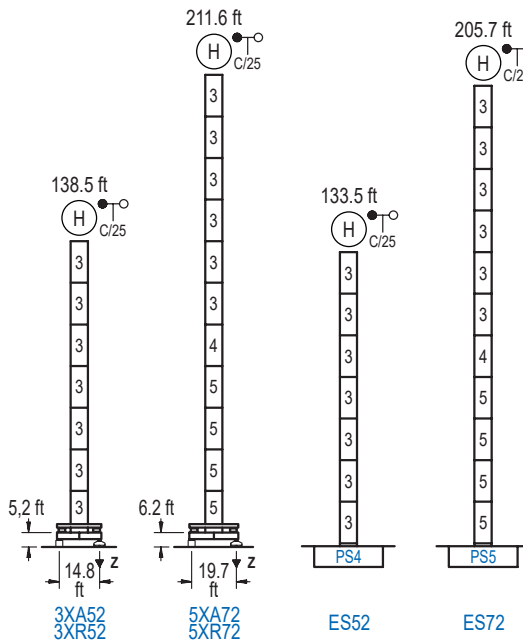
Elevación / Hoist / Levage / Hub / Sollevamento / Тип механизма (подъем)	Carro / Trolley / Chariot / Laufkatze / Carrelo / Грузовая тележка	Giro / Slewing / Rotation / Drehbewegung / Rotazione / Поворот	Traslación / Travel / Translation / Verfahrbewegung / Traslazione / Ход	Tensión de alimentación / Operating voltage / Tension de service / Betriebsspannung / Tensione di alimentazione / Напряжение источника питания	Potencia requerida / Required power / Puissance requise / Benötigte Leistung / Potenza richiesta / требуемая мощность
EFU4-37-25	CFU-7.5	(2x) GFU-7.5	(2x) TRA-7.5	480 V 3ph 60 Hz	55 kVA
EFU5-50-25					68 kVA

Opcional / Optional / En option / Kaufoption / Opzionale / Опционально
*

ALTURAS BAJO GANCHO

Heights under hook / Hauteurs sous crochet / Hakenhöhen / Altezza sotto gancio / Высота под крюком

∅ 6.6 ft

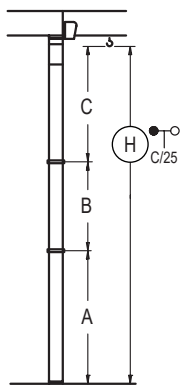


	n°	Ref.	∅	h
	3	S24	6.6	18.0
	4	TS25	6.6	18.0
	5	S25	6.6	18.0
	1x S25 = 1x S25M			

Z máx.	En servicio / In operation / En service / In Betrieb / In servizio / При работе	3XR52.. 218 kip 5XR72.. 231 kip
	Fuera de servicio / Out of service / Hors service / Ausser Betrieb / Fuori servizio / В стационарном состоянии	3XR52.. 168 kip 5XR72.. 302 kip

GRÚA ARRIOSTRADA

Braced crane / Grue à entretoisement / Abgespannter Kran / Gru ancorata / Нарастиваемый кран

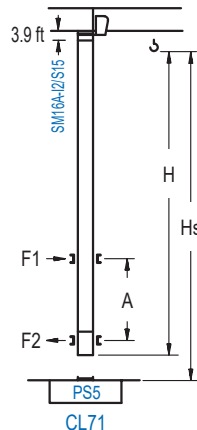


	3XA52	5XA72
A max	95.4	168.6
A min	77.4	96.6
B max	72.2	72.2
B min	54.1	54.1
C max	115.2	115.2
H max	210.6	282.8
	283.8	337.9

	ES52	ES72
A max	90.6	162.7
A min	72.5	90.6
B max	72.2	72.2
B min	54.1	54.1
C max	115.2	115.2
H max	205.7	277.9
	277.9	332.0

GRÚA TREPADORA

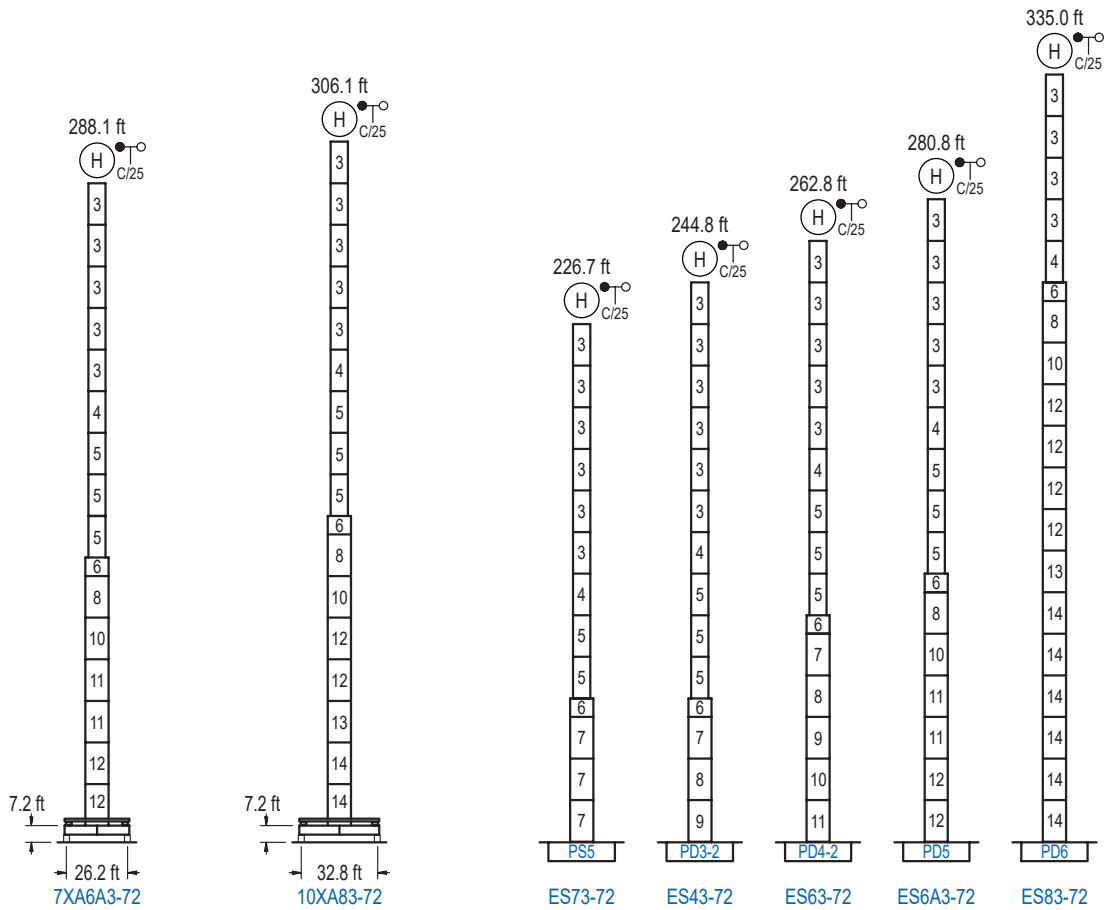
Internal climbing crane / Grue avec cage de télescage intérieure / Kran mit klettern im Gebäude / Gru in rampante in cavedio / Кран с самоподъемом



	Hs < 1,310 ft
	A max (ft) A min (ft)
133.9 ft 7x S15 + CLS15-08	64.3 29.5
115.8 ft 6x S15 + CLS15-08	55.1 26.2
97.8 ft 5x S15 + CLS15-08	46.2 26.2

	h (ft)	∅ (ft)	h
Ref.			
S15	5.2	18.0	
CLS15-08	5.2	10.2	
1x S15 = 1x S15M			

Otras zonas de viento, alturas superiores, arriostramientos o trepado interno consultar / Other wind zones, additional hook heights, tie frames or internal climbing on request / Autres zones de vent, des hauteurs supplémentaires, entretoisements ou grues avec cage de télescage intérieure, sur demande / Andere Windzonen, weitere Hakenhöhen, Abspannungen zum Gebäude oder Klettern im Gebäude auf Anfrage / Per zone con velocità del vento particolari, altezze superiori, ancoraggi o rampante in cavedio, consultare il fabbricante / При других ветренных зонах, при большой высоте, привязках к зданию или наращивании крана внутри здания проконсультируйтесь с нами



n°	Ref.	∅	h	n°	Ref.	∅	h	n°	Ref.	∅	h	n°	Ref.	∅	h
4	TS25	6.6	18.0	7	S35	8.2	18.0	11	D34	8.2	18.0	14	D36B	8.2	18.0
5	S25	6.6	18.0	8	TD33A	8.2	18.0	12	D35	8.2	18.0				
				9	D33	8.2	18.0								
				1x S35 = 1x S35M											
1x S25 = 1x S25M				1x D33 = 1x D33M											

Otras zonas de viento o alturas superiores consultar / Other wind zones or additional hook heights on request / Autres zones de vent ou des hauteurs supplémentaires sur demande / Andere Windzonen oder weitere Hakenhöhen auf Anfrage / Per zone con velocità del vento particolari o altezze superiori consultare il fabbricante / При других ветренных зонах о при большой высоте проконсультируйтесь с нами