

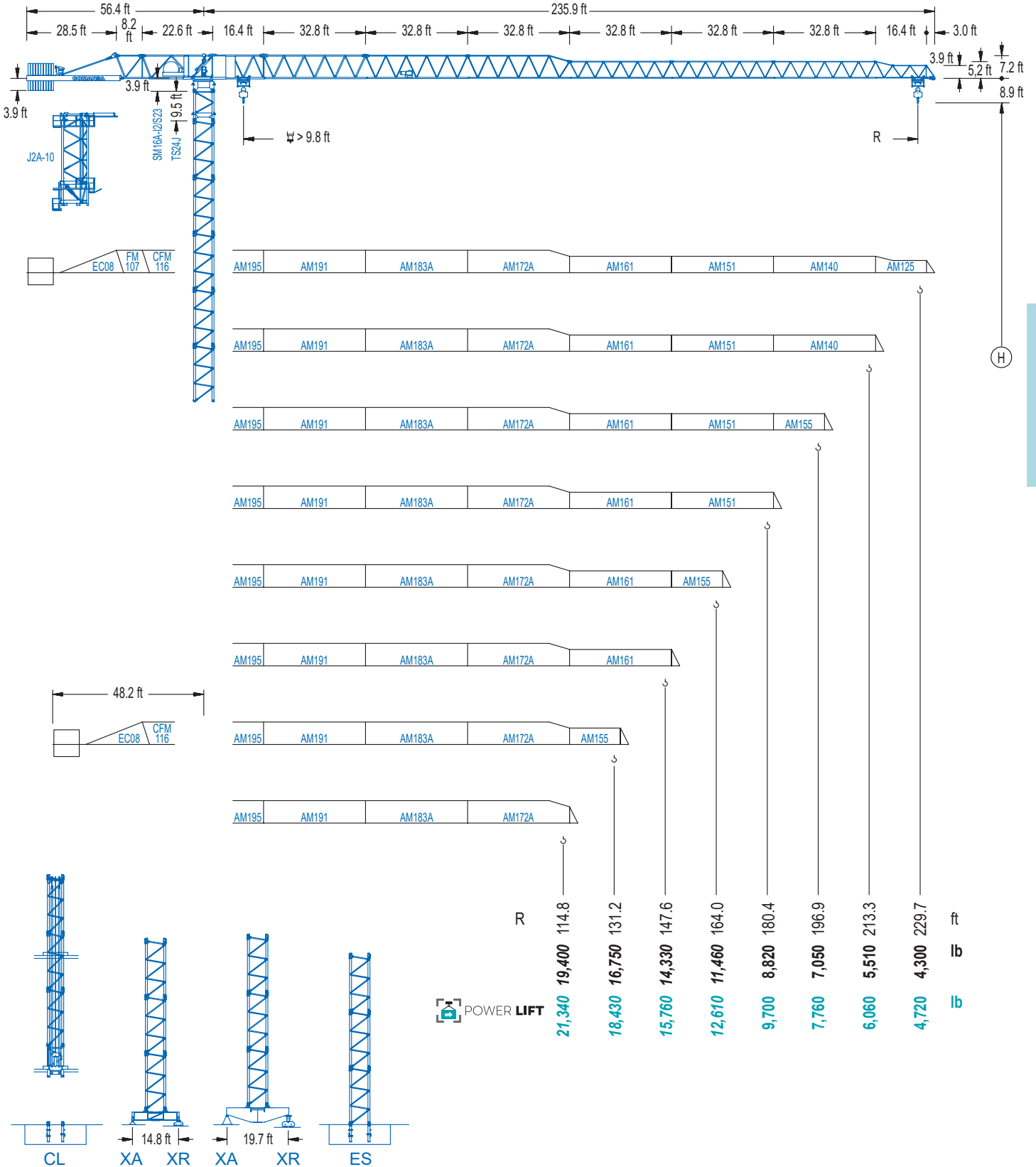


**COMANSA**

**1600 Series**

**16 LC 260**

**RC 22,050 lb**



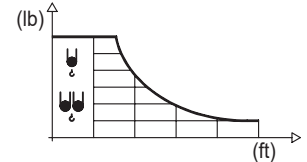
**1600 Series**

**CE** EN 14439 (C/25)

## DIAGRAMA DE CARGAS

Load chart / Diagramme de charges / Lastdiagramm / Diagramma di carico / Диаграмма распределения нагрузки

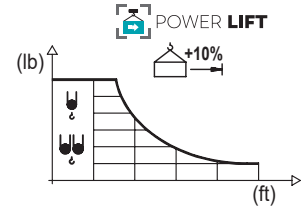
R (ft)	☺☺											☺											
229.7	59.1	65.6	72.2	82.0	88.6	98.4	108.3	114.8	121.4	131.2	137.8	147.6	154.2	164.0	170.6	180.4	187.0	196.9	203.4	213.3	219.8	229.7	ft
	22,050	19,580	17,570	15,190	13,890	12,300	11,020	10,270	9,610	8,750	8,270	7,580	7,210	6,660	6,350	5,910	5,640	5,290	5,070	4,760	4,560	4,300	lb
213.3		65.9	72.2	82.0	88.6	98.4	105.0	114.8	120.7	131.2	137.8	147.6	154.2	164.0	170.6	180.4	187.0	196.9	203.4	213.3	ft		
		22,050	19,890	17,200	15,760	13,980	12,990	11,710	11,020	10,010	9,440	8,710	8,250	7,650	7,300	6,810	6,500	6,110	5,860	5,510	lb		
196.9			73.8	82.0	88.6	98.4	105.0	114.8	121.4	131.2	135.5	147.6	154.2	164.0	170.6	180.4	187.0	196.9	ft				
			22,050	19,530	17,920	15,920	14,790	13,360	12,520	11,440	11,020	9,960	9,480	8,800	8,400	7,850	7,520	7,050	lb				
180.4				81.0	88.6	98.4	105.0	114.8	121.4	131.2	137.8	149.3	154.2	164.0	170.6	180.4	ft						
				22,050	19,930	17,720	16,490	14,900	13,980	12,790	12,080	11,020	10,600	9,880	9,440	8,820	lb						
164.0					91.9	98.4	105.0	114.8	121.4	131.2	137.8	147.6	154.2	164.0	ft								
					22,050	20,410	19,000	17,200	16,140	14,790	14,000	12,940	12,300	11,460	lb								
147.6						100.4	105.0	114.8	121.4	131.2	137.8	147.6	ft										
						22,050	20,970	18,980	17,860	16,360	15,500	14,330	lb										
131.2							102.4	114.8	121.4	131.2	ft												
							22,050	19,440	18,280	16,750	lb												
114.8								102.4	114.8	ft													
								22,050	19,400	lb													



## DIAGRAMA DE CARGAS POWERLIFT

Load chart PowerLift / Diagramme de charges PowerLift / Lastdiagramm PowerLift / Diagramma di carico PowerLift / Диаграмма распределения нагрузки PowerLift

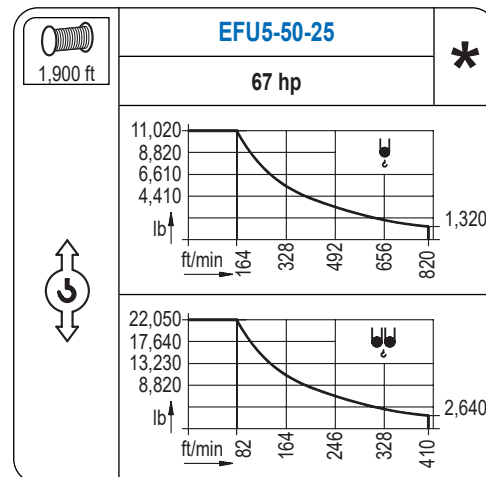
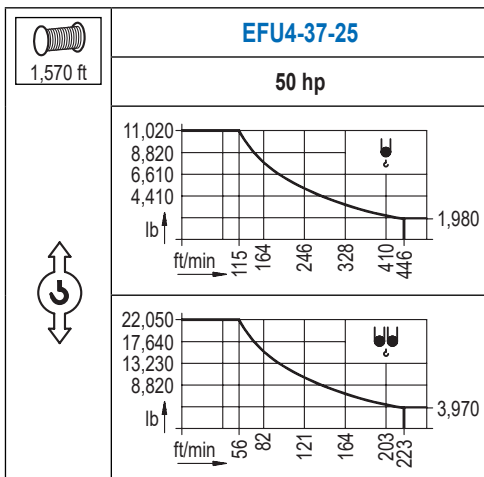
R (ft)	☺☺											☺										
229.7	63.3	72.2	82.0	88.6	98.4	105.0	115.8	121.4	131.2	137.8	147.6	154.2	164.0	170.6	180.4	187.0	196.9	203.4	213.3	219.8	229.7	ft
	22,050	18,980	16,420	15,040	13,320	12,370	11,020	10,450	9,520	8,990	8,270	7,850	7,280	6,920	6,460	6,170	5,780	5,560	5,220	5,000	4,720	lb
213.3		70.9	82.0	88.6	98.4	105.0	114.8	121.4	130.2	137.8	147.6	154.2	164.0	170.6	180.4	187.0	196.9	203.4	213.3	ft		
		22,050	18,670	17,130	15,190	14,110	12,740	11,950	11,020	10,320	9,500	9,020	8,380	7,980	7,450	7,140	6,700	6,440	6,060	lb		
196.9			79.4	88.6	98.4	105.0	114.8	121.4	131.2	137.8	146.3	154.2	164.0	170.6	180.4	187.0	196.9	ft				
			22,050	19,530	17,350	16,140	14,570	13,670	12,520	11,820	11,020	10,380	9,660	9,220	8,620	8,250	7,760	lb				
180.4				87.6	98.4	105.0	114.8	121.4	131.2	137.8	147.6	154.2	161.7	170.6	180.4	ft						
				22,050	19,360	18,010	16,290	15,300	14,020	13,250	12,260	11,640	11,020	10,360	9,700	lb						
164.0					99.7	105.0	114.8	121.4	131.2	137.8	147.6	154.2	164.0	ft								
					22,050	20,810	18,850	17,700	16,230	15,370	14,220	13,540	12,610	lb								
147.6						109.3	114.8	121.4	131.2	137.8	147.6	ft										
						22,050	20,860	19,600	17,970	17,020	15,760	lb										
131.2							111.5	114.8	121.4	131.2	ft											
							22,050	21,360	20,080	18,430	lb											
114.8								111.5	114.8	ft												
								22,050	21,340	lb												



Datos válidos hasta 328 ft de ABG. Para alturas mayores consultar / Valid data up to 328 ft HUH. Additional heights on request / Données valables jusqu'à 328 ft HSC. Pour des autres hauteurs, merci de nous consulter / Gültige Daten bis zu 328 ft HH. Bei höheren Hakenhöhen nachfragen / Dati validi fino a 328 ft ASG. Per altezze superiori consultare Comansa / Допустимые данные до 328 фут ВПК. Для более высоких высот консультируйтесь

## MECANISMOS

Mechanisms / Mécanismes / Antriebe / Meccanismi / Механизмы



## MECANISMOS

Mechanisms / Mécanismes / Antriebe / Meccanismi / Механизмы

	<b>CFU-7.5</b>
	10 hp
0 ⇔ 308 ft/min	

	<b>GFU-7.5</b>
	2x 10 hp
0 ⇔ 0,7 rpm	

	<b>TRA-7.5</b>
	2x 55 ft·lb
	78 ft/min
	3XR52

	<b>TRA-7.5</b>
	2x 55 ft·lb
	78 ft/min
	5XR72

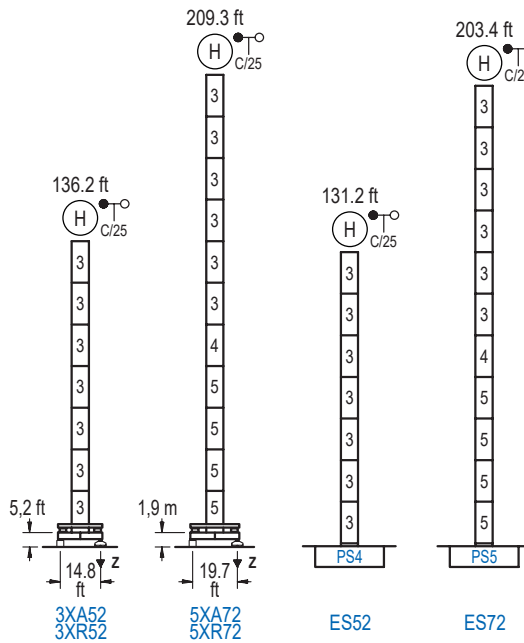
Elevación / Hoist / Levage / Hub / Sollevamento / Тип механизма (подъем)	Carro / Trolley / Chariot / Laufkatze / Carrello / Грузовая тележка	Giro / Slewing / Rotation / Drehbewegung / Rotazione / Поворот	Traslación / Travel / Translation / Verfahrbewegung / Traslazione / Ход	Tensión de alimentación / Operating voltage / Tension de service / Betriebsspannung / Tensione di alimentazione / Напряжение источника питания	Potencia requerida / Required power / Puissance requise / Benötigte Leistung / Potenza richiesta / требуемая мощность
EFU4-37-25	CFU-7.5	(2x) GFU-7.5	(2x) TRA-7.5	480 V	55 kVA
EFU5-50-25				3ph 60 Hz	68 kVA

Optional / Optional / En option / Kaufoption / Opzionale / Опционально
<b>*</b>

## ALTURAS BAJO GANCHO

Heights under hook / Hauteurs sous crochet / Hakenhöhen / Altezza sotto gancio / Высота под крюком

∅ 6.6 ft

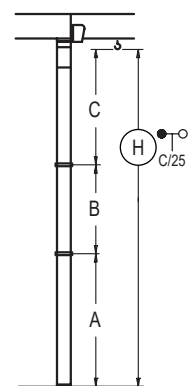


	n°	Ref.	∅	h
	3	S24	6.6	18.0
	4	TS25	6.6	18.0
	5	S25	6.6	18.0
	1x S25 = 1x S25M			

<b>Z máx.</b>	En servicio / In operation / En service / In Betrieb / In servizio / При работе	3XR52.. 218 kip 5XR72.. 231 kip
	Fuera de servicio / Out of service / Hors service / Ausser Betrieb / Fuori servizio / В стационарном состоянии	3XR52.. 168 kip 5XR72.. 302 kip

## GRÚA ARRIOSTRADA

Braced crane / Grue à entretoisement / Abgespannter Kran / Gru ancorata / Нарастиваемый кран



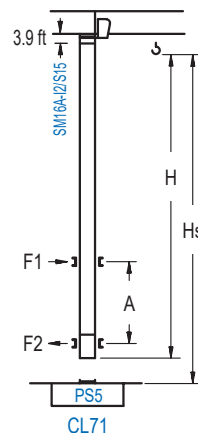
	3XA52	5XA72
A max	95.4	168.6
A min	77.4	96.6
B max	72.2	72.2
B min	54.1	54.1
C max	112.9	112.9
H max	208.3	280.5
	281.5	335.6

	ES52	ES72
A max	90.6	162.7
A min	72.5	90.6
B max	72.2	72.2
B min	54.1	54.1
C max	112.9	112.9
H max	203.4	275.6
	275.6	329.7

## GRÚA TREPADORA

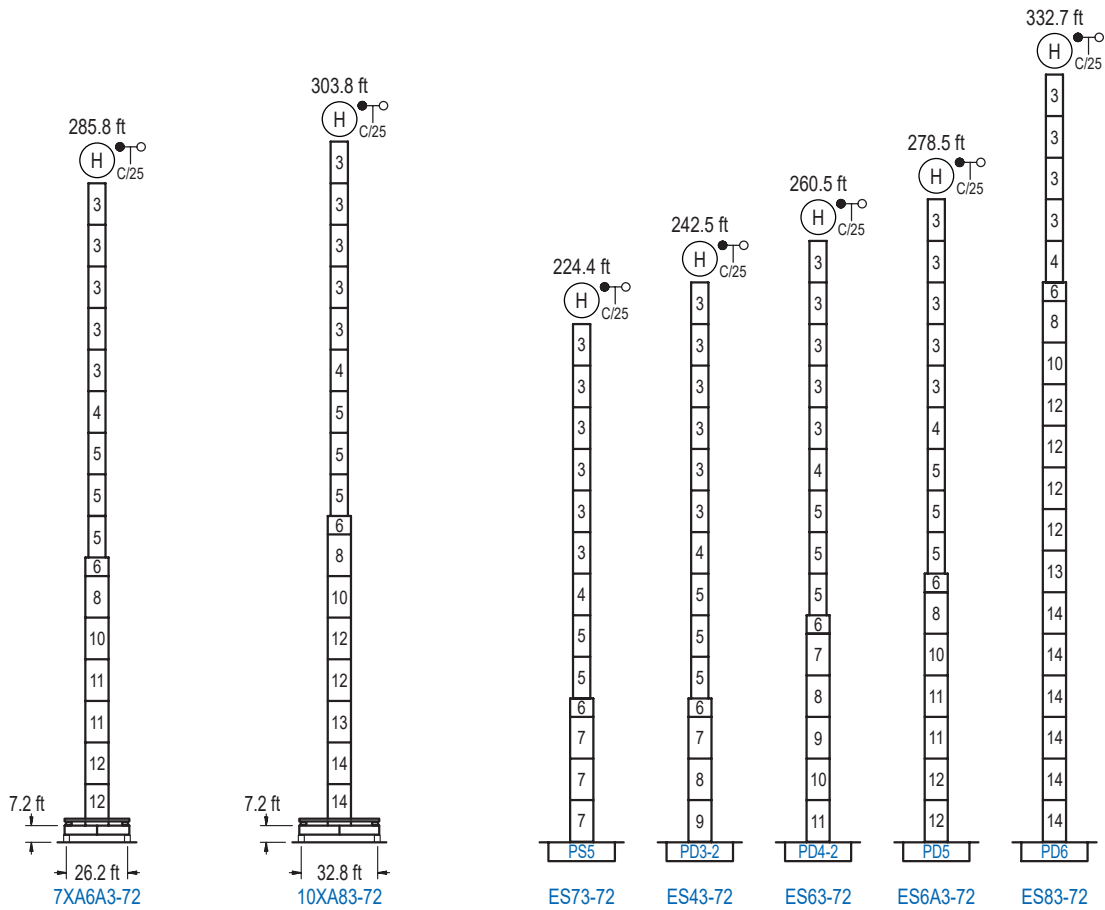
Internal climbing crane / Grue avec cage de télescage intérieure / Kran mit klettern im Gebäude / Gru in rampante in cavedio / Кран с самоподъемом



	Hs < 1,310 ft
A max (ft)	A min (ft)
<b>131.6 ft</b> 7x S15 + CLS15-08	64.3 29.5
<b>131.6 ft</b> 6x S15 + CLS15-08	55.1 26.2
<b>95.5 ft</b> 5x S15 + CLS15-08	46.2 26.2

	h (ft)	∅ (ft)
Ref.	∅	h
S15	5.2	18.0
CLS15-08	5.2	10.2
1x S15 = 1x S15M		

Otras zonas de viento, alturas superiores, arriostramientos o trepado interno consultar / Other wind zones, additional hook heights, tie frames or internal climbing on request / Autres zones de vent, des hauteurs supplémentaires, entretoisements ou grues avec cage de télescage intérieure, sur demande / Andere Windzonen, weitere Hakenhöhen, Abspannungen zum Gebäude oder Klettern im Gebäude auf Anfrage / Per zone con velocità del vento particolari, altezze superiori, ancoraggi o rampante in cavedio, consultare il fabbricante / При других ветренных зонах, при большой высоте, привязках к зданию или наращивании крана внутри здания проконсультируйтесь с нами



n°	Ref.	∅	h	n°	Ref.	∅	h	n°	Ref.	∅	h	n°	Ref.	∅	h
4	TS25	6.6	18.0	7	S35	8.2	18.0	11	D34	8.2	18.0	14	D36B	8.2	18.0
5	S25	6.6	18.0	8	TD33A	8.2	18.0	12	D35	8.2	18.0				
				9	D33	8.2	18.0								
				1x S35 = 1x S35M											
				1x D33 = 1x D33M											
1x S25 = 1x S25M															

Otras zonas de viento o alturas superiores consultar / Other wind zones or additional hook heights on request / Autres zones de vent ou des hauteurs supplémentaires sur demande / Andere Windzonen oder weitere Hakenhöhen auf Anfrage / Per zone con velocità del vento particolari o altezze superiori consultare il fabbricante / При других ветренных зонах о при большой высоте проконсультируйтесь с нами