

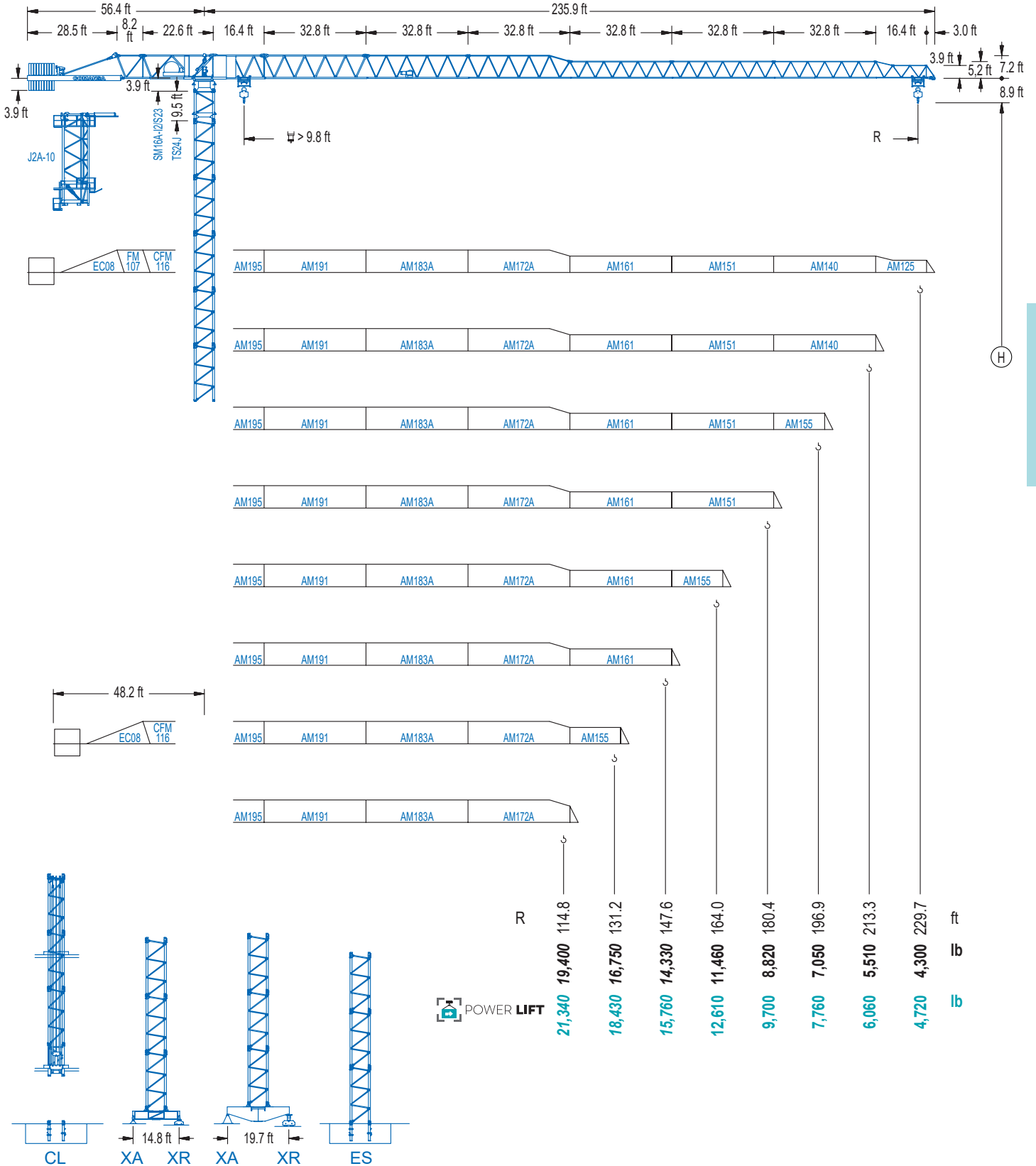


COMANSA

1600 Series

16 LC 260

RC 26,460 lb



1600 Series

CE EN 14439 (C/25)

DIAGRAMA DE CARGAS

Load chart / Diagramme de charges / Lastdiagramm / Diagramma di carico / Диаграмма распределения нагрузки

R (ft)	👤										👤																																			
229.7	50.2	65.6	72.2	82.0	92.5	98.4	105.0	114.8	121.4	131.2	137.8	147.6	154.2	164.0	170.6	180.4	187.0	196.9	203.4	213.3	219.8	229.7	ft	26,460	19,580	17,570	15,190	13,230	12,300	11,420	10,270	9,610	8,750	8,270	7,580	7,210	6,660	6,350	5,910	5,640	5,290	5,070	4,760	4,560	4,300	lb
213.3	55.8	65.6	72.2	82.0	88.6	98.4	103.3	114.8	121.4	131.2	137.8	147.6	154.2	164.0	170.6	180.4	187.0	196.9	203.4	213.3	ft	26,460	22,130	19,890	17,200	15,760	13,980	13,230	11,710	10,980	10,010	9,440	8,710	8,250	7,650	7,300	6,810	6,500	6,110	5,860	5,510	lb				
196.9	62.3	72.2	82.0	88.6	98.4	105.0	115.8	121.4	131.2	137.8	147.6	154.2	164.0	170.6	180.4	187.0	196.9	ft	26,460	22,550	19,530	17,920	15,920	14,790	13,230	12,520	11,440	10,800	9,960	9,480	8,800	8,400	7,850	7,520	7,050	lb										
180.4	68.6	72.2	82.0	88.6	98.4	105.0	114.8	127.3	131.2	137.8	147.6	154.2	164.0	170.6	180.4	ft	26,460	25,040	21,740	19,930	17,720	16,490	14,900	13,230	12,790	12,080	11,160	10,600	9,880	9,440	8,820	lb														
164.0	77.8	82.0	88.6	98.4	105.0	114.8	121.4	131.2	137.8	144.7	154.2	164.0	ft	26,460	24,980	22,950	20,410	19,000	17,200	16,140	14,790	14,000	13,230	12,300	11,460	lb																				
147.6	85.0	88.6	98.4	105.0	114.8	121.4	131.2	137.8	147.6	ft	26,460	25,310	22,530	20,970	18,980	17,860	16,360	15,500	14,330	lb																										
131.2	86.9	98.4	105.0	114.8	121.4	131.2	ft	26,460	23,060	21,470	19,440	18,280	16,750	lb																																
114.8	86.6	98.4	105.0	114.8	ft	26,460	23,020	21,430	19,400	lb																																				

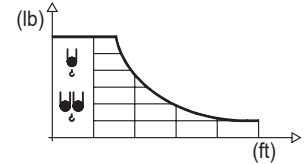
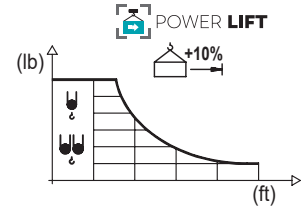


DIAGRAMA DE CARGAS POWERLIFT

Load chart PowerLift / Diagramme de charges PowerLift / Lastdiagramm PowerLift / Diagramma di carico PowerLift / Диаграмма распределения нагрузки PowerLift

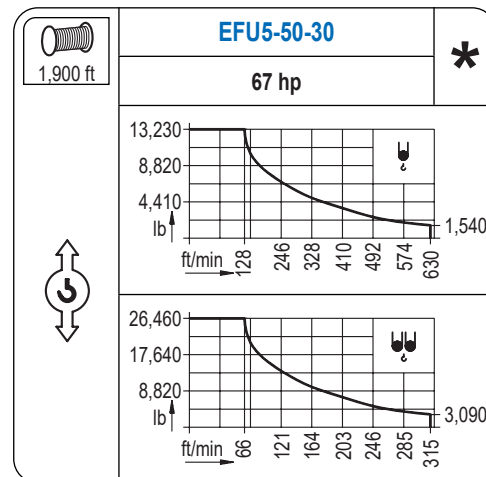
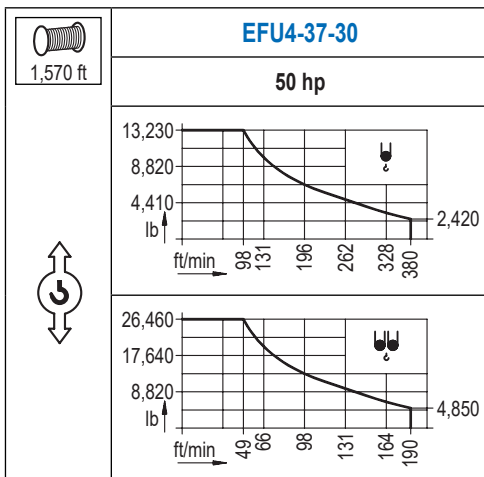
R (ft)	👤										👤																																			
229.7	53.8	65.6	72.2	82.0	88.6	99.1	105.0	114.8	121.4	131.2	137.8	147.6	154.2	164.0	170.6	180.4	187.0	196.9	203.4	213.3	219.8	229.7	ft	26,460	21,140	18,980	16,420	15,040	13,230	12,370	11,160	10,450	9,520	8,990	8,270	7,850	7,280	6,920	6,460	6,170	5,780	5,560	5,220	5,000	4,720	lb
213.3	60.0	65.6	72.2	82.0	88.6	98.4	105.0	111.2	121.4	131.2	137.8	147.6	154.2	164.0	170.6	180.4	187.0	196.9	203.4	213.3	ft	26,460	23,990	21,560	18,670	17,130	15,190	14,110	13,230	11,950	10,910	10,320	9,500	9,020	8,380	7,980	7,450	7,140	6,700	6,440	6,060	lb				
196.9	67.6	72.2	82.0	88.6	98.4	105.0	114.8	125.0	131.2	137.8	147.6	154.2	164.0	170.6	180.4	187.0	196.9	ft	26,460	24,540	21,270	19,530	17,350	16,140	14,570	13,230	12,520	11,820	10,910	10,380	9,660	9,220	8,620	8,250	7,760	lb										
180.4	74.5	82.0	88.6	98.4	105.0	114.8	121.4	131.2	138.1	147.6	154.2	164.0	170.6	180.4	ft	26,460	23,720	21,780	19,360	18,010	16,290	15,300	14,020	13,230	12,260	11,640	10,850	10,360	9,700	lb																
164.0	84.3	88.6	98.4	105.0	114.8	121.4	131.2	137.8	147.6	157.5	164.0	ft	26,460	25,110	22,350	20,810	18,850	17,700	16,230	15,370	14,220	13,230	12,610	lb																						
147.6	92.5	98.4	105.0	114.8	121.4	131.2	137.8	147.6	ft	26,460	24,690	23,020	20,860	19,600	17,970	17,020	15,760	lb																												
131.2	94.5	98.4	105.0	114.8	121.4	131.2	ft	26,460	25,310	23,590	21,360	20,080	18,430	lb																																
114.8	94.5	98.4	105.0	114.8	ft	26,460	25,290	23,550	21,340	lb																																				



Datos válidos hasta 328 ft de ABG. Para alturas mayores consultar / Valid data up to 328 ft HUH. Additional heights on request / Données valables jusqu'à 328 ft HSC. Pour des autres hauteurs, merci de nous consulter / Gültige Daten bis zu 328 ft HH. Bei höheren Hakenhöhen nachfragen / Dati validi fino a 328 ft ASG. Per altezze superiori consultare Comansa / Допустимые данные до 328 фут ВПК. Для более высоких высот консультируйтесь


MECANISMOS


Mechanisms / Mécanismes / Antriebe / Meccanismi / Механизмы

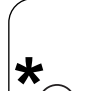


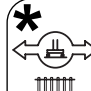
MECANISMOS

Mechanisms / Mécanismes / Antriebe / Meccanismi / Механизмы

	CFU-7.5
	10 hp
0 ⇔ 308 ft/min	

	GFU-7.5
	2x 10 hp
0 ⇔ 0,7 rpm	

	TRA-7.5
	2x 55 ft·lb
	78 ft/min
	3XR52

	TRA-7.5
	2x 55 ft·lb
	78 ft/min
	5XR72

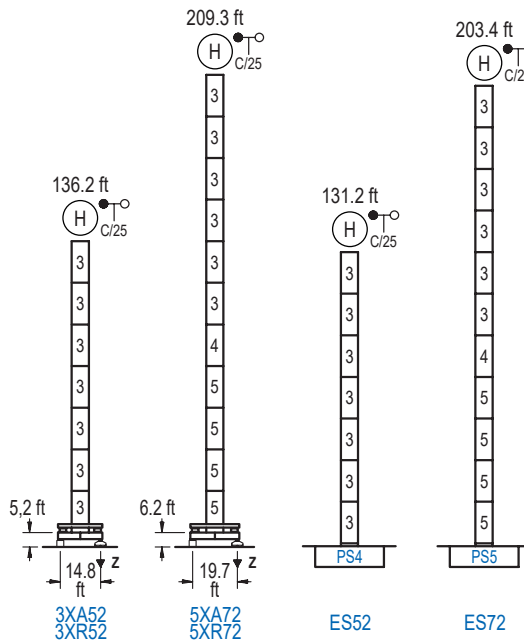
Elevación / Hoist / Levage / Hub / Sollevamento / Тип механизма (подъем)	Carro / Trolley / Chariot / Laufkatze / Carrello / Грузовая тележка	Giro / Slewing / Rotation / Drehbewegung / Rotazione / Поворот	Traslación / Travel / Translation / Verfahrbewegung / Traslazione / Ход	Tensión de alimentación / Operating voltage / Tension de service / Betriebsspannung / Tensione di alimentazione / Напряжение источника питания	Potencia requerida / Required power / Puissance requise / Benötigte Leistung / Potenza richiesta / требуемая мощность
EFU4-37-30	CFU-7.5	(2x) GFU-7.5	(2x) TRA-7.5	480 V 3ph 60 Hz	55 kVA
EFU5-50-30					68 kVA

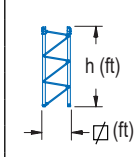
Optional / Optional / En option / Kaufoption / Opzionale / Опционально
*

ALTURAS BAJO GANCHO

Heights under hook / Hauteurs sous crochet / Hakenhöhen / Altezza sotto gancio / Высота под крюком

∅ 6.6 ft

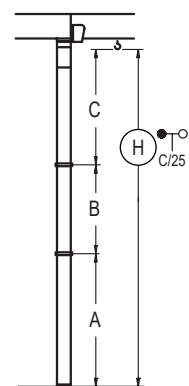


	n°	Ref.	∅	h
	3	S24	6.6	18.0
	4	TS25	6.6	18.0
	5	S25	6.6	18.0
	1x S25 = 1x S25M			

Z máx.	En servicio / In operation / En service / In Betrieb / In servizio / При работе	3XR52.. 220 kip 5XR72.. 231 kip
	Fuera de servicio / Out of service / Hors service / Ausser Betrieb / Fuori servizio / В стационарном состоянии	3XR52.. 165 kip 5XR72.. 300 kip

GRÚA ARRIOSTRADA

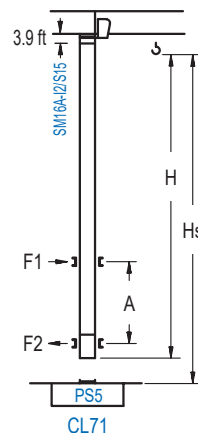
Braced crane / Grue à entretoisement / Abgespannter Kran / Gru ancorata / Нарастиваемый кран





	3XA52	5XA72
A max	95.4	168.6
A min	77.4	96.6
B max	72.2	72.2
B min	54.1	54.1
C max	112.9	112.9
H max	208.3	280.5
	ES52	ES72
A max	90.6	162.7
A min	72.5	90.6
B max	72.2	72.2
B min	54.1	54.1
C max	112.9	112.9
H max	203.4	275.6

GRÚA TREPADORA

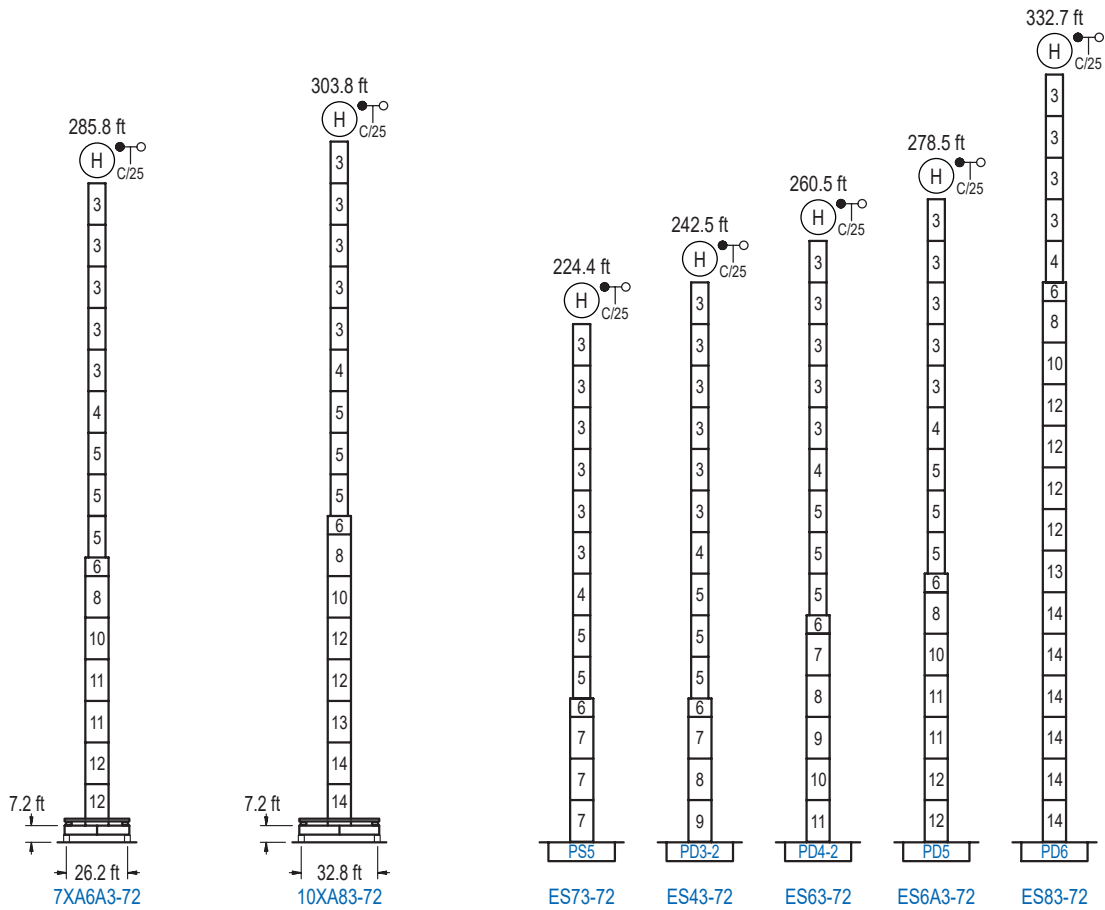
Internal climbing crane / Grue avec cage de télescopage intérieure / Kran mit klettern im Gebäude / Gru in rampante in cavedio / Кран с самоподъемом



	Hs < 1,310 ft
A max (ft)	A min (ft)
131.6 ft 7x S15 + CLS15-08	64.3 29.5
131.6 ft 6x S15 + CLS15-08	55.1 26.2
95.5 ft 5x S15 + CLS15-08	46.2 26.2

	h (ft)	∅ (ft)
Ref.	∅	h
S15	5.2	18.0
CLS15-08	5.2	10.2
1x S15 = 1x S15M		

Otras zonas de viento, alturas superiores, arriostramientos o trepado interno consultar / Other wind zones, additional hook heights, tie frames or internal climbing on request / Autres zones de vent, des hauteurs supplémentaires, entretoisements ou grues avec cage de télescopage intérieure, sur demande / Andere Windzonen, weitere Hakenhöhen, Abspannungen zum Gebäude oder Klettern im Gebäude auf Anfrage / Per zone con velocità del vento particolari, altezze superiori, ancoraggi o rampante in cavedio, consultare il fabbricante / При других ветренных зонах, при большой высоте, привязках к зданию или наращивании крана внутри здания проконсультируйтесь с нами



	n°	Ref.	∅	h	n°	Ref.	∅	h	n°	Ref.	∅	h	n°	Ref.	∅	h
		3	S24	6.6	18.0	6	TMS35S25	8.2	3.3	10	TD34	8.2	18.0	13	TD36B	8.2
	4	TS25	6.6	18.0	7	S35	8.2	18.0	11	D34	8.2	18.0	14	D36B	8.2	18.0
	5	S25	6.6	18.0	8	TD33A	8.2	18.0	12	D35	8.2	18.0				
					9	D33	8.2	18.0								
	1x S25 = 1x S25M				1x S35 = 1x S35M											
					1x D33 = 1x D33M											

Otras zonas de viento o alturas superiores consultar / Other wind zones or additional hook heights on request / Autres zones de vent ou des hauteurs supplémentaires sur demande / Andere Windzonen oder weitere Hakenhöhen auf Anfrage / Per zone con velocità del vento particolari o altezze superiori consultare il fabbricante / При других ветренных зонах о при большой высоте проконсультируйтесь с нами