

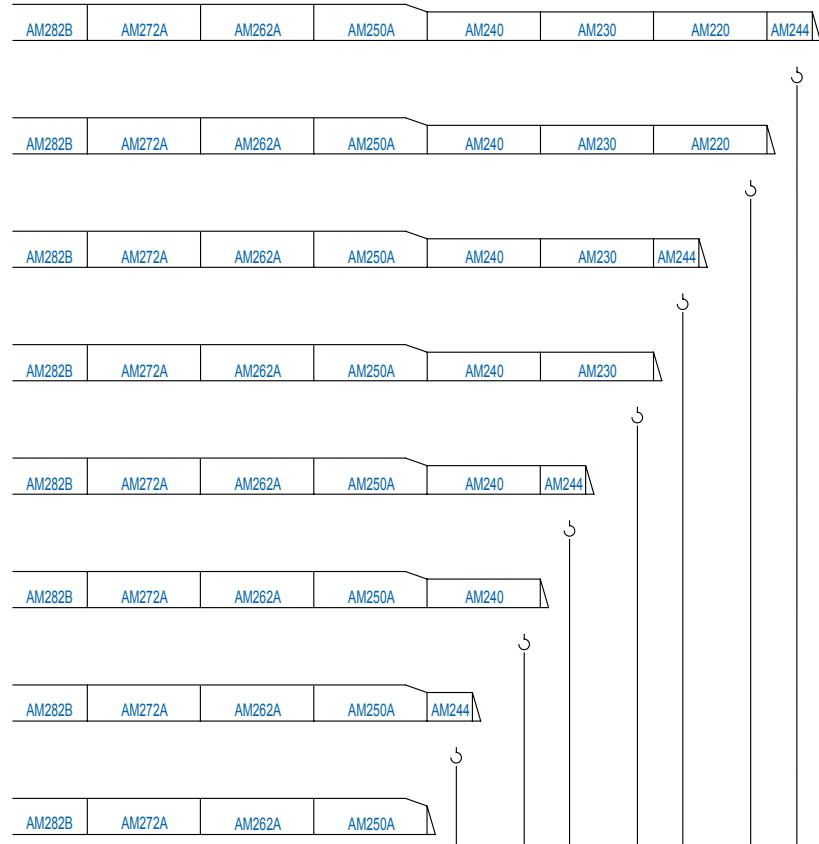
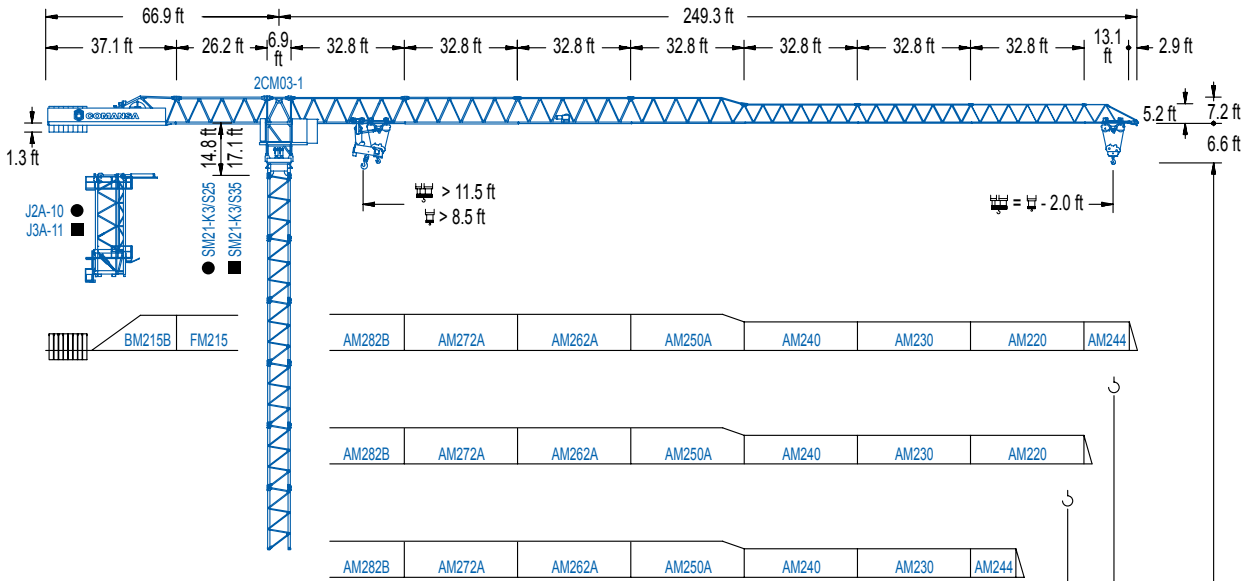


COMANSA

2100 Series

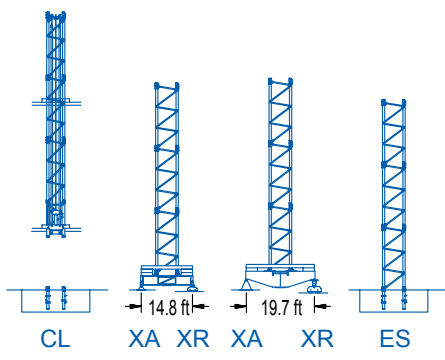
21 LC 335

26,460 lb



(H) (H = H - 1.3 ft)

R	131.2	144.4	164.0	177.2	196.9	210.0	229.7	242.8
	18,300	15,870	13,450	12,790	9,920	8,820	6,610	5,950
	20,130	17,460	14,790	13,230	10,910	9,700	7,280	6,550



2100 Series



DIAGRAMA DE CARGAS

Load chart / Diagramme de charges / Lastdiagramm / Diagramma di carico / Диаграмма распределения нагрузки

R (ft)	1.5:1								2:1								
242.8	66.3	75.5	82.0	91.9	98.4	108.3	117.8	122.4	131.2	144.4	164.0	177.2	196.9	210.0	229.7	242.8	ft
	26,460	22,750	20,610	17,990	16,530	14,700	13,230	13,230	12,240	10,980	9,480	8,660	7,670	7,100	6,370	5,950	lb
229.7	67.9	75.5	82.0	91.9	98.4	108.3	120.7	126.3	131.2	144.4	164.0	177.2	196.9	210.0	229.7		ft
	26,460	23,390	21,190	18,500	17,020	15,150	13,230	13,230	12,650	11,380	9,830	8,990	7,940	7,360	6,610		lb
210.0		77.8	82.0	91.9	98.4	108.3	114.8	124.7	138.1	147.0	164.0	177.2	196.9	210.0			ft
		26,460	24,800	21,720	20,020	17,860	16,620	15,040	13,230	13,230	11,680	10,710	9,500	8,820			lb
196.9			80.1	91.9	98.4	108.3	114.8	124.7	142.7	152.6	164.0	177.2	196.9				ft
			26,460	22,510	20,750	18,520	17,260	15,610	13,230	13,230	12,190	11,180	9,920				lb
177.2				88.9	98.4	108.3	114.8	124.7	131.2	158.8	171.9	177.2					ft
				26,460	23,500	21,010	19,600	17,770	16,710	13,230	13,230	12,790					lb
164.0					91.9	98.4	108.3	114.8	124.7	131.2	144.4	161.9					ft
					26,430	24,400	21,850	20,370	18,470	17,390	15,500	13,450					lb
144.4						92.2	98.4	108.3	114.8	124.7	131.2	142.2					ft
						26,460	24,560	21,980	20,500	18,610	17,500	15,870					lb
131.2							94.2	98.4	108.3	114.8	124.7	129.1					ft
							26,460	25,150	22,530	21,030	19,070	18,300					lb

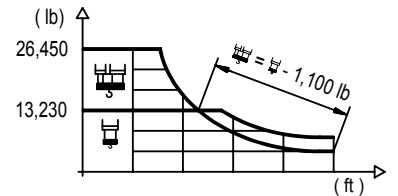
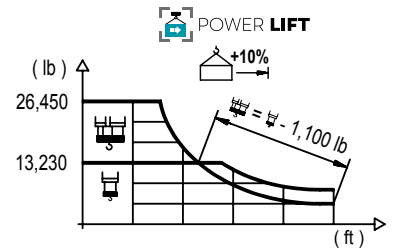


DIAGRAMA DE CARGAS POWERLIFT

Load chart PowerLift / Diagramme de charges PowerLift / Lastdiagramm PowerLift / Diagramma di carico PowerLift / Диаграмма распределения нагрузки PowerLift

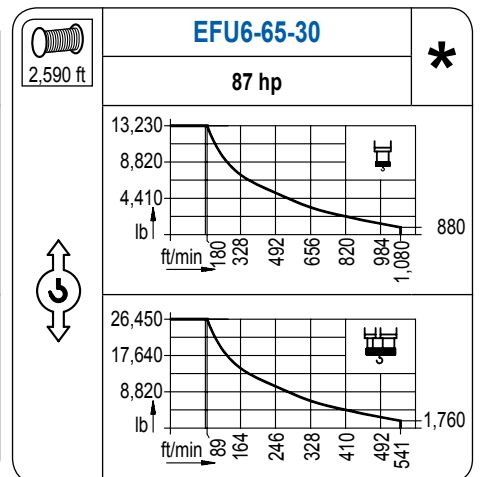
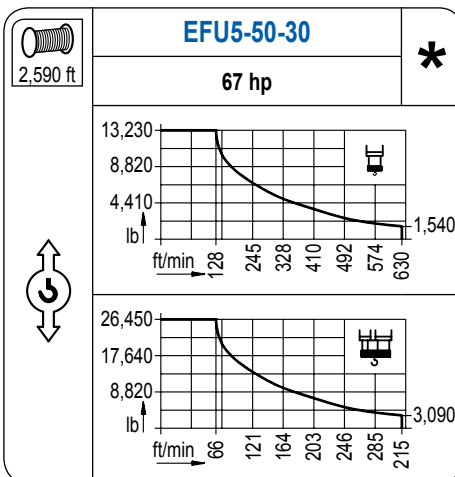
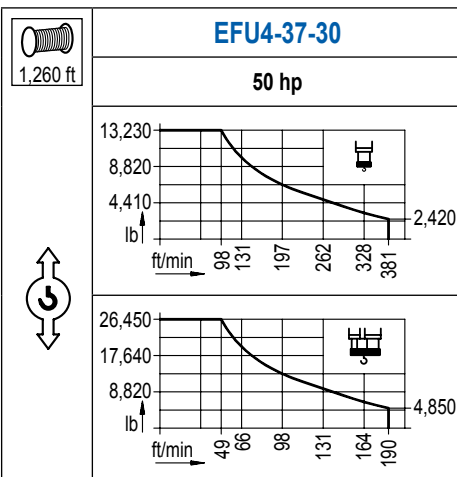
R (ft)	1.5:1								2:1								
242.8	71.2	75.5	82.0	91.9	98.4	108.3	114.8	126.6	132.2	144.4	164.0	177.2	196.9	210.0	229.7	242.8	ft
	26,460	24,710	22,400	19,580	18,030	16,050	14,930	13,230	13,230	11,990	10,360	9,480	8,400	7,780	7,010	6,550	lb
229.7	73.2	75.5	82.0	91.9	98.4	108.3	114.8	129.9	136.5	144.4	164.0	177.2	196.9	210.0	229.7		ft
	26,460	25,440	23,080	20,170	18,580	16,560	15,410	13,230	13,230	12,430	10,760	9,850	8,730	8,090	7,280		lb
210.0			83.7	91.9	98.4	108.3	114.8	124.7	131.2	149.3	159.8	177.2	196.9	210.0			ft
			26,460	23,740	21,910	19,580	18,250	16,530	15,520	13,230	13,230	11,770	10,450	9,700			lb
196.9				86.6	91.9	98.4	108.3	114.8	124.7	131.2	154.2	166.0	177.2	196.9			ft
				26,460	24,650	22,750	20,330	18,960	17,200	16,160	13,230	13,230	12,300	10,910			lb
177.2					95.8	108.3	114.8	124.7	131.2	144.4	175.2	177.2					ft
					26,460	22,930	21,380	19,420	18,280	16,290	13,230	13,230					lb
164.0						99.1	108.3	114.8	124.7	131.2	144.4	162.1					ft
						26,460	23,880	22,290	20,240	19,050	17,000	14,790					lb
144.4							99.7	108.3	114.8	124.7	131.2	142.4					ft
							26,460	24,070	22,490	20,410	19,220	17,460					lb
131.2								102.0	108.3	114.8	124.7	129.3					ft
								26,460	24,710	23,080	20,970	20,130					lb



2100 Series

MECANISMOS

Mechanisms / Mécanismes / Antriebe / Meccanismi / Механизмы



MECANISMOS

Mechanisms / Mécanismes / Antriebe / Meccanismi / Механизмы

	CFU-7.5
	10 hp
0 ⇔ 308 ft/min	

	GFU-7.5
	3x 10 hp
0 ⇔ 0,7 rpm	

	TRA-7.5
	2x 55 ft-lb
	78 ft/min
	3XR72 5XR72

	TRA-7.5VC
	2x 55 ft-lb
	78 ft/min
	5XR72

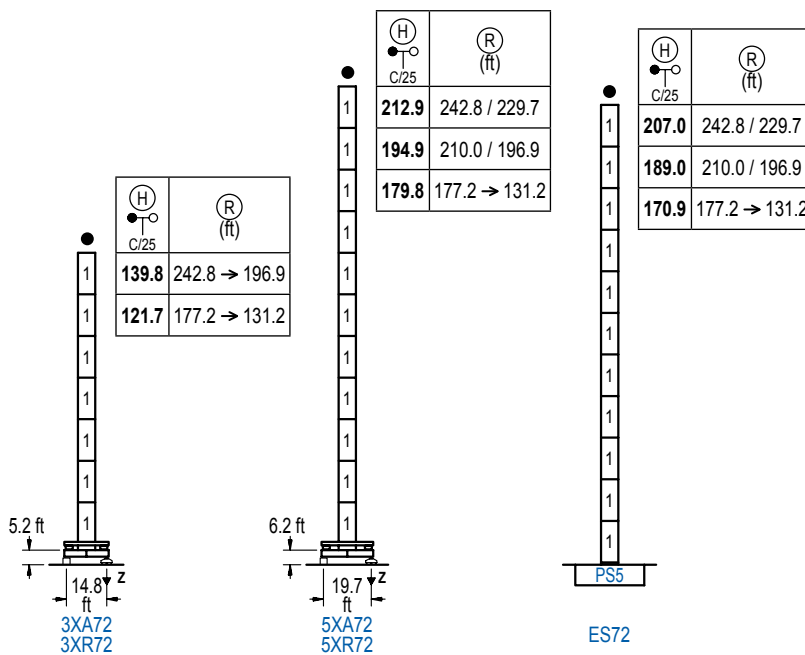
POTENCIA / POWER / PUISSANCE / LEISTUNG / POTENZA / МОЩНОСТЬ				Tensión de alimentación / Operating voltage / Tension de service / Betriebsspannung / Tensione di alimentazione / Напряжение источника питания	Generator / Generator / Générateur / Generator / Generatore / Генератор
Elevación / Hoist / Levage / Hub / Sollevamento / Тип механизма (подъем)	Carro / Trolley / Chariot / Laufkatze / Carrolo / Грузовая тележка	Giro / Slewing / Rotation / Drehbewegung / Rotazione / Поворот	Traslación / Travel / Translation / Laufkatze / Verfahrbewegung / Traslazione / Ход	480 V 3ph 60 Hz	130 kVA 160 kVA 180 kVA
EFU4-37-30	CFU-7.5	(3x) GFU-7.5	(2x) TRA-7.5		
EFU5-50-30					
EFU6-65-30					

Opcional / Optional / En option / Kaufoption / Opzionale / Опционально
*

ALTURAS BAJO GANCHO

Heights under hook / Hauteurs sous crochet / Hakenhöhen / Altezza sotto gancio / Высота под крюком

∅ 6.6 ft

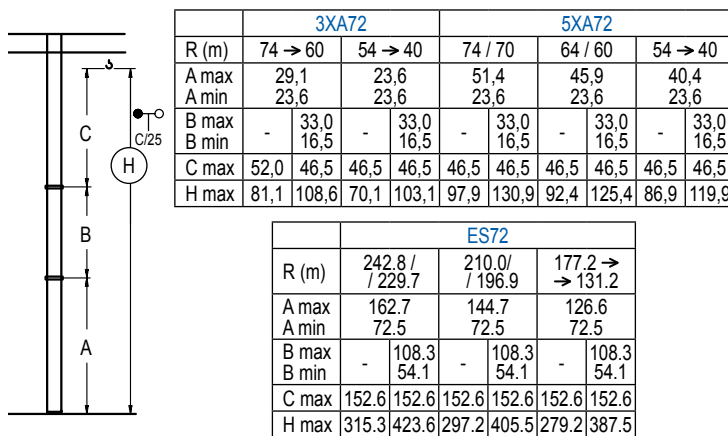


	n° Ref.	∅	h
	1 S25	6.6	18.0
	1x S25 = 1x S25M		

Z máx.	En servicio / In operation / En service / In Betrieb / In servizio / При работе	3XR72.. 221 kip 5XR72.. 227 kip
	Fuera de servicio / Out of service / Hors service / Ausser Betrieb / Fuori servizio / В стационарном состоянии	3XR72.. 168 kip 5XR72.. 295 kip

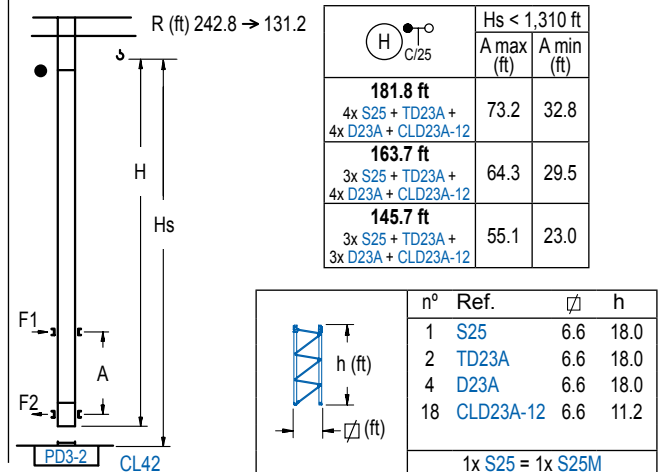
GRÚA ARRIOSTRADA

Braced crane / Grue à entretoisement / Abgespannter Kran / Gru ancorata / Нарастиваемый кран



GRÚA TREPADORA

Internal climbing crane / Grue avec cage de télescopage intérieure / Kran mit Klettern im Gebäude / Gru in rampante in cavedito / Кран с самоподъемом



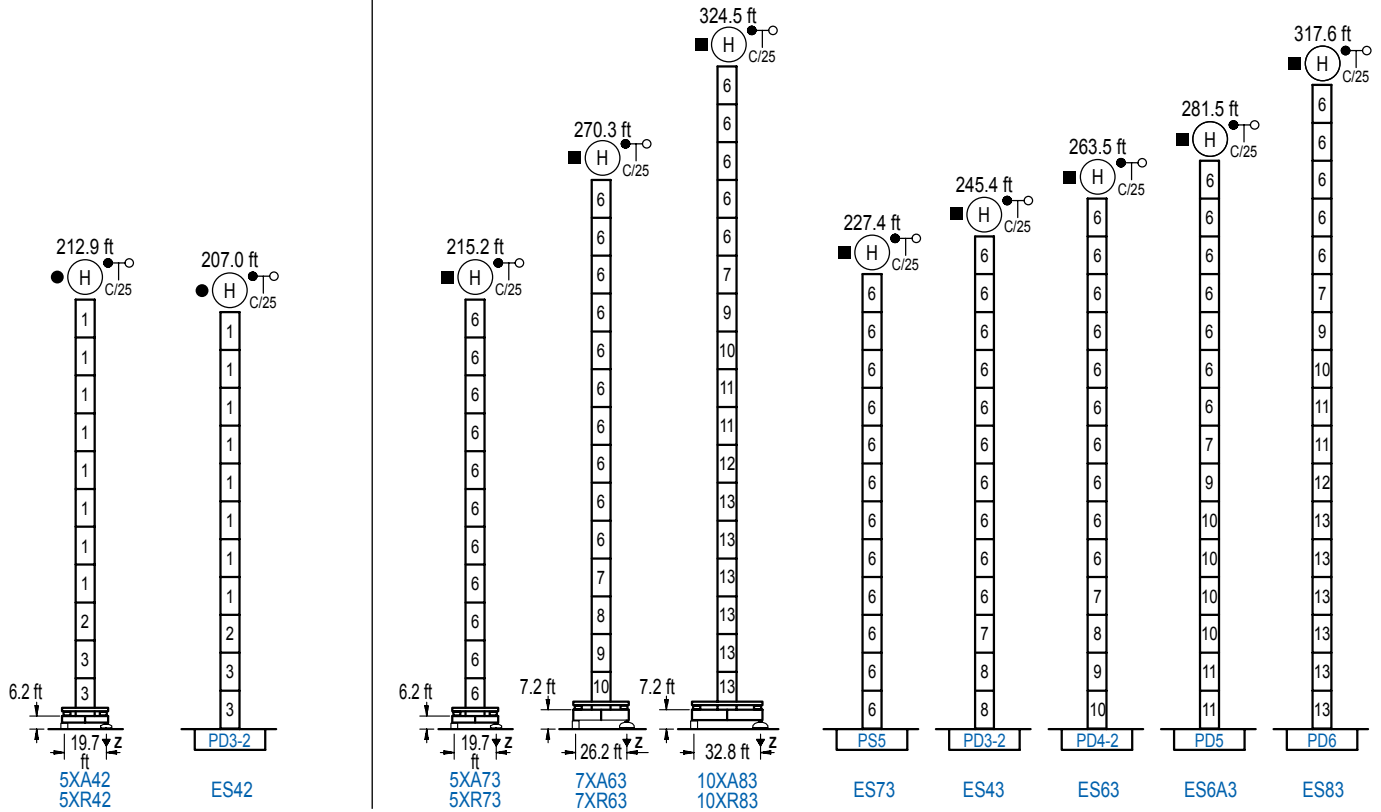
Otras zonas de viento, alturas superiores, arriostramientos o trepado interno consultar / Other wind zones, additional hook heights, tie frames or internal climbing on request / Autres zones de vent, des hauteurs supplémentaires, entretoisements ou grues avec cage de télescopage intérieure, sur demande / Andere Windzonen, weitere Hakenhöhen, Abspannungen zum Gebäude oder Klettern im Gebäude auf Anfrage / Per zone con velocità del vento particolari, altezze superiori, ancoraggi o rampante in cavedito, consultare il fabbricante / При других ветренных зонах, при большой высоте, привязках к зданию или наращивании крана внутри здания проконсультируйтесь с нами

ALTURAS BAJO GANCHO
 Heights under hook / Hauteurs sous
 crochet / Hakenhöhen / Altezza sotto
 gancio / Высота под крючком

∅ 6.6 ft

ALTURAS BAJO GANCHO
 Heights under hook / Hauteurs sous
 crochet / Hakenhöhen / Altezza sotto
 gancio / Высота под крючком

∅ 8.2 ft



n°	Ref.	∅	h	n°	Ref.	∅	h	n°	Ref.	∅	h	n°	Ref.	∅	h
1	S25	6.6	18.0	6	S35	8.2	18.0	9	TD34	8.2	18.0	12	TD36B	8.2	18.0
2	TD23A	6.6	18.0	7	TD33A	8.2	18.0	10	D34	8.2	18.0	13	D36B	8.2	18.0
3	D23	6.6	18.0	8	D33	8.2	18.0	11	D35	8.2	18.0				
1x S25 = 1x S25M				1x S35 = 1x S35M				1x D33 = 1x D33M							

Otras zonas de viento o alturas superiores consultar / Other wind zones or additional hook heights on request / Autres zones de vent ou des hauteurs supplémentaires sur demande / Andere Windzonen oder weitere Hakenhöhen auf Anfrage / Per zone con velocità del vento particolari o altezze superiori consultare il fabbricante / При других ветренных зонах о при большой высоте проконсультируйтесь с нами

2100 Series