

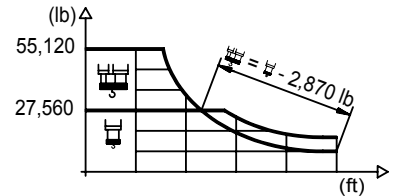


2100 Series

## DIAGRAMA DE CARGAS



Load chart / Diagramme de charges / Lastdiagramm / Diagramma di carico / Диаграмма распределения нагрузки

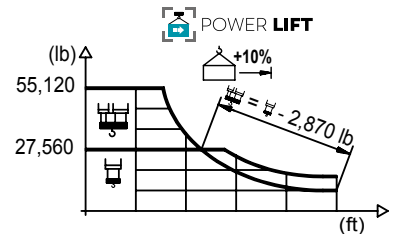
R (ft)																						
262.5	36.4	49.2	59.1	64.6	27,560	70.9	82.0	91.9	98.4	105.0	114.8	124.7	131.2	147.6	164.0	180.4	196.9	210.0	229.7	242.8	262.5	ft
	55,120	38,450	30,780	27,560		27,560	23,410	20,570	19,030	17,660	15,940	14,480	13,620	11,860	10,450	9,300	8,330	7,690	6,860	6,370	5,730	lb
242.8	44.3	49.2	59.1	65.6	27,560	72.2	79.1	87.3	98.4	105.0	114.8	124.7	131.2	147.6	164.0	180.4	196.9	210.0	229.7	242.8		ft
	55,120	48,790	39,290	34,630	30,860	27,560	24,100	22,400	20,260	18,450	17,390	15,210	13,450	12,020	10,820	10,010	8,970	8,380				lb
229.7	48.6	59.1	65.6	72.2	27,560	82.0	87.3	96.1	105.0	114.8	124.7	131.2	147.6	164.0	180.4	196.9	210.0	229.7				ft
	55,120	43,940	38,780	34,610	29,670	27,560	25,000	22,620	20,640	19,470	17,020	15,080	13,510	12,190	11,290	10,140						lb
210.0	52.2	59.1	65.6	72.2	27,560	82.0	93.5	103.7	105.0	114.8	124.7	131.2	147.6	164.0	180.4	196.9	210.0					ft
	55,120	47,710	42,150	37,680	32,340	27,560	27,140	24,560	22,420	21,160	18,540	16,450	14,730	13,320	12,350							lb
196.9	56.1	65.6	72.2	82.0	27,560	91.9	98.4	100.7	111.5	124.7	131.2	147.6	164.0	180.4	196.9							ft
	55,120	45,900	41,050	35,300	30,820	28,350	27,560	27,560	24,380	23,040	20,190	17,920	16,070	14,550								lb
164.0	61.0	65.6	72.2	82.0	27,560	91.9	98.4	105.0	109.9	122.0	131.2	147.6	164.0									ft
	55,120	50,570	45,280	39,000	34,130	31,440	29,080	27,560	27,560	25,440	22,310	19,840										lb
131.2	62.7	72.2	82.0	91.9	27,560	98.4	105.0	113.2	126.6	131.2												ft
	55,120	52,360	44,530	38,580	35,360	32,580	27,560	27,560	27,560	26,460												lb



## DIAGRAMA DE CARGAS POWERLIFT

Load chart PowerLift / Diagramme de charges PowerLift / Lastdiagramm PowerLift / Diagramma di carico PowerLift / Диаграмма распределения нагрузки PowerLift

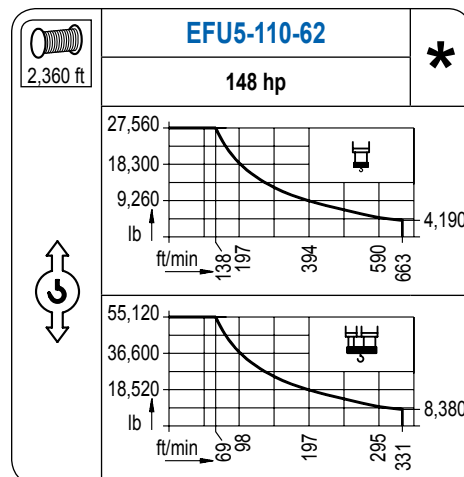
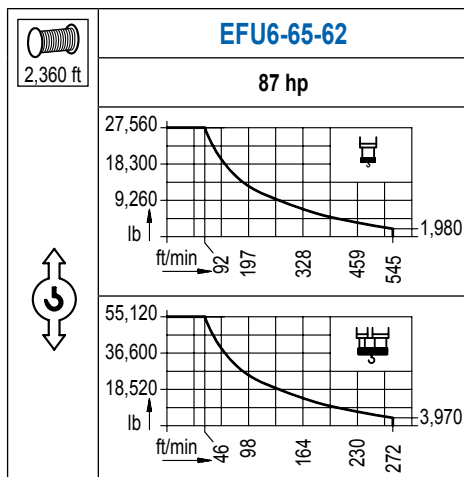
R (ft)																						
262.5	39.0	49.2	59.1	69.2	27,560	76.1	82.0	91.9	98.4	105.0	114.8	124.7	131.2	147.6	164.0	180.4	196.9	210.0	229.7	242.8	262.5	ft
	55,120	41,670	33,420	27,560		27,560	25,290	22,270	20,590	19,140	17,260	15,700	14,790	12,900	11,380	10,140	9,100	8,400	7,500	6,990	6,310	lb
242.8	47.6	49.2	59.1	65.6	27,560	72.2	85.3	94.2	98.4	105.0	114.8	124.7	131.2	147.6	164.0	180.4	196.9	210.0	229.7	242.8		ft
	55,120	53,130	42,860	37,830	33,750	27,560	26,210	24,380	22,050	20,110	18,980	16,580	14,700	13,160	11,860	10,980	9,850	9,220				lb
229.7	52.5	59.1	65.6	72.2	27,560	82.0	94.2	104.0	105.0	114.8	124.7	131.2	147.6	164.0	180.4	196.9	210.0	229.7				ft
	55,120	48,020	42,420	37,920	32,540	27,560	27,560	27,560	24,670	22,510	21,250	18,610	16,510	14,790	13,380	12,410	11,160					lb
210.0	56.4	65.6	72.2	82.0	27,560	91.9	101.4	112.2	114.8	124.7	131.2	147.6	164.0	180.4	196.9	210.0						ft
	55,120	46,210	41,340	35,540	31,040	27,560	26,850	24,520	23,150	20,300	18,030	16,180	14,640	13,580								lb
196.9	60.7	65.6	72.2	82.0	27,560	91.9	98.4	108.9	121.1	124.7	131.2	147.6	164.0	180.4	196.9							ft
	55,120	50,350	45,080	38,820	33,950	31,280	27,560	27,560	26,700	25,220	22,130	19,670	17,680	16,010								lb
164.0	66.3	72.2	82.0	91.9	27,560	98.4	105.0	114.8	119.4	132.9	147.6	164.0										ft
	55,120	49,850	42,990	37,650	34,720	32,170	28,880	27,560	27,560	25,540	21,830											lb
131.2	67.6	72.2	82.0	91.9	27,560	98.4	105.0	114.8	122.4	131.2												ft
	55,120	51,170	44,160	38,690	35,690	33,070	29,720	27,560	27,560	27,560												lb



2100 Series

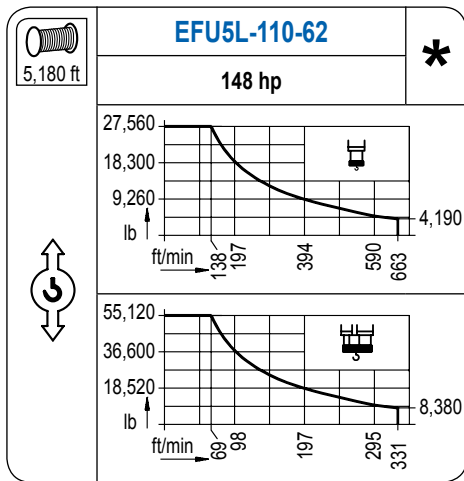
## MECANISMOS

Mechanisms / Mécanismes / Antriebe / Meccanismi / Механизмы



# MECANISMOS

Mechanisms / Mécanismes / Antriebe / Meccanismi / Механизмы



Para mecanismos de alta capacidad de cable consultar cargas. / For mechanisms with high drum capacity, request loads. / Pour des mécanismes avec une grande capacité de câble il faut consulter. / Für Hubmechanismen mit hoher Kabelkapazität, Lastdiagramm anfragen. / Gru con tamburo ad alta capacità di avvolgimento fune, consultare il diagramma di carico. / Проконсультируйтесь о нагрузках при механизмах с большей вместимостью кабеля.

	<b>CFU-7.5</b>
	<b>10 hp</b>
0 ⇔ 308 ft/min	

	<b>GFU-7.5</b>
	<b>4x 10 hp</b>
0 ⇔ 0,7 rpm	

	<b>TRA-7.5</b>	<b>TRA-7.5</b>
	<b>2x 55 ft-lb</b>	<b>4x 55 ft-lb</b>
78 ft/min		
	<b>5XR73</b>	<b>7XR63</b> <b>10XR83</b>

	<b>TRA-7.5VC</b>	<b>TRA-7.5VC</b>
	<b>2x 55 ft-lb</b>	<b>4x 55 ft-lb</b>
78 ft/min		
	<b>5XR73</b>	<b>7XR63</b> <b>10XR83</b>

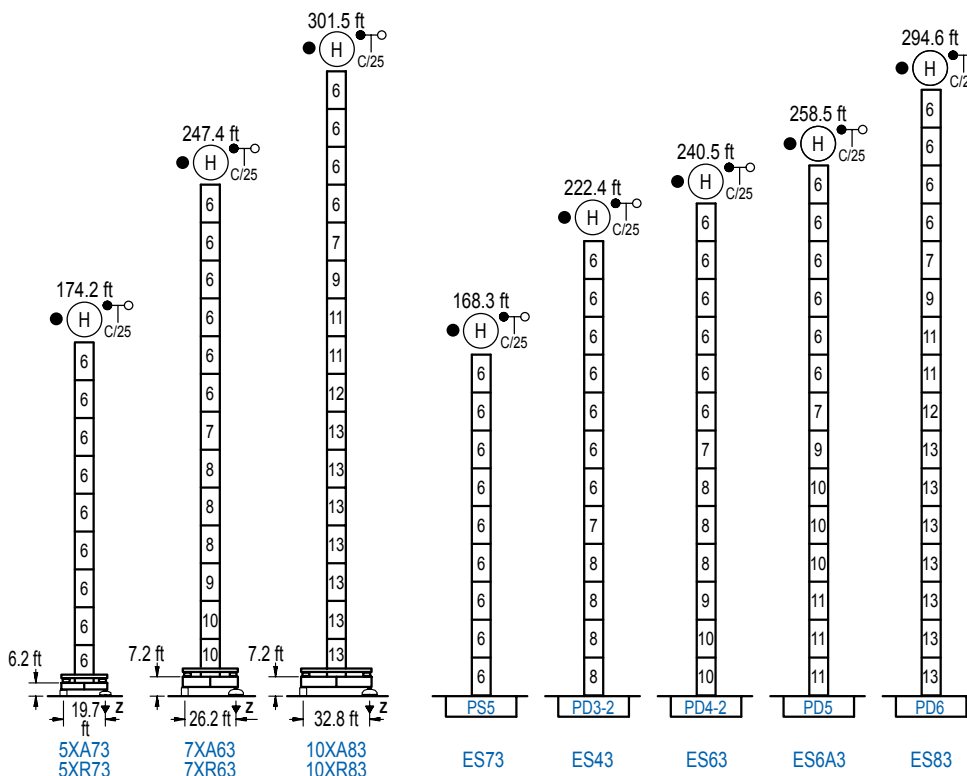
POTENCIA / POWER / PUISSANCE / LEISTUNG / POTENZA / МОЩНОСТЬ				Tensión de alimentación / Operating voltage / Tension de service / Betriebsspannung / Tensione di alimentazione / Напряжение источника питания	Generador / Generator / Générateur / Generator / Generatore / Генератор
Elevación / Hoist / Levage / Hub / Sollevamento / Тип механизма (подъем)	Carro / Trolley / Chariot / Laufkatze / Carrello / Грузовая тележка	Giro / Slewing / Rotation / Drehbewegung / Rotazione / Поворот	Traslación / Travel / Translation / Verfahrbewegung / Traslazione / Ход		
EFU6-65-62	CFU-7.5	(4x) GFU-7.5	(2x) TRA-7.5	480 V	195 kVA
EFU5-110-62			(4x) TRA-7.5	3ph	260 kVA
EFU5L-110-62			(4x) TRA-7.5	60 Hz	260 kVA

Opcional / Optional / En option / Kaufoption / Opzionale / Опционально
<b>*</b>

## ALTURAS BAJO GANCHO

Heights under hook / Hauteurs sous crochet / Hakenhöhen / Altezza sotto gancio / Высота под крюком

∅ 8.2 ft



n°	Ref.	∅	h
6	S35	8.2	18.0
7	TD33A	8.2	18.0
8	D33	8.2	18.0
9	TD34	8.2	18.0
10	D34	8.2	18.0
11	D35	8.2	18.0
12	TD36B	8.2	18.0
13	D36B	8.2	18.0
1x S35 = 1x S35M			
1x D33 = 1x D33M			

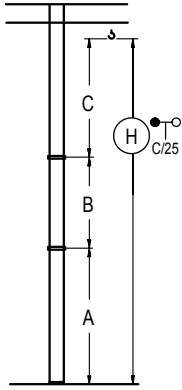
<b>Z máx.</b>	En servicio / In operation / En service / In Betrieb / In servizio / При работе	<b>5XR73</b> ....267 kip <b>7XR63</b> ....271 kip <b>10XR83</b> ..304 kip
	Fuera de servicio / Out of service / Hors service / Ausser Betrieb / Fuori servizio / В стационарном состоянии	<b>5XR73</b> ....225 kip <b>7XR63</b> ....364 kip <b>10XR83</b> ..483 kip

Otras zonas de viento o alturas superiores consultar / Other wind zones or additional hook heights on request / Autres zones de vent ou des hauteurs supplémentaires sur demande / Andere Windzonen oder weitere Hakenhöhen auf Anfrage / Per zone con velocità del vento particolari o altezze superiori consultare il fabbricante / При других ветренных зонах о при большой высоте проконсультируйтесь с нами

## GRÚA ARRIOSTRADA

Braced crane / Grue à entretoisement / Abgespannter Kran / Gru ancorata / Нарастиваемый кран

∅ 8.2 ft



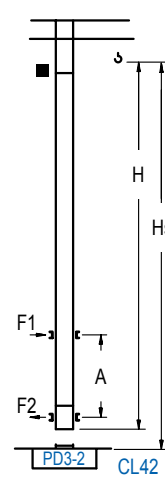
	5XA73	7XA63	10XA83
A max	132.5	205.7	259.8
A min	96.5	115.5	205.7
B max	-	108.3	-
B min	-	72.2	-
C max	149.9	149.9	149.9
H max	282.5	390.7	518.0

	ES73	ES43	ES63	ES6A3	ES83
A max	126.6	180.8	198.8	216.9	253.0
A min	90.6	90.6	108.6	126.6	198.8
B max	-	108.3	-	108.3	-
B min	-	72.2	-	72.2	-
C max	149.9	149.9	149.9	149.9	149.9
H max	276.6	384.8	330.7	439.0	348.8

## GRÚA TREPADORA

Internal climbing crane / Grue avec cage de télescopage intérieure / Kran mit Klettern im Gebäude / Gru in rampante in cavedito / Кран с самоподъемом

∅ 6.6 ft



H	Hs < 1,310 ft	
	A max (ft)	A min (ft)
158.8 ft 4x D23 + 4x D23A + CLD23A-12	64.3	29.5
140.7 ft 3x D23 + 4x D23A + CLD23A-12	55.1	26.2
122.7 ft 2x D23 + 4x D23A + CLD23A-12	46.3	23.0

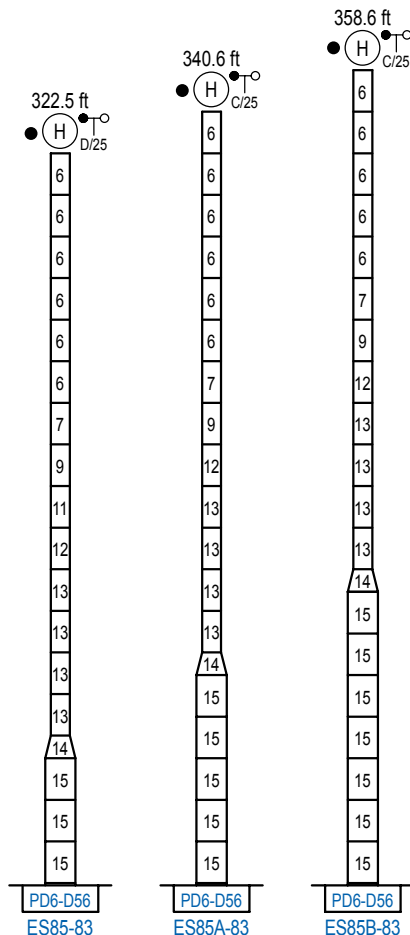
n°	Ref.	h (ft)	
		∅	h
3	D23	6.6	18.0
4	D23A	6.6	18.0
18	CLD23A-12	6.6	11.2

Otras zonas de viento, alturas superiores, arriostramientos o trepado interno consultar / Other wind zones, additional hook heights, tie frames or internal climbing on request / Autres zones de vent, des hauteurs supplémentaires, entretoisements ou grues avec cage de télescopage intérieure, sur demande / Andere Windzonen, weitere Hakenhöhen, Abspannungen zum Gebäude oder Klettern im Gebäude auf Anfrage / Per zone con velocità del vento particolari, altezze superiori, ancoraggi o rampante in cavedito, consultare il fabbricante / При других ветренных зонах, при большой высоте, привязках к зданию или наращивании крана внутри здания проконсультируйтесь с нами

## ALTURAS ESPECIALES

Special heights / Spéciaux hauteurs / Extra Höhen / Conformazioni raccordate per altezze speciali / Для специальной высоты

∅ 13.1 ft



n°	Ref.	h (ft)	
		∅	h
6	S35	8.2	18.0
7	TD33A	8.2	18.0
8	D33	8.2	18.0
9	TD34	8.2	18.0
10	D34	8.2	18.0
11	D35	8.2	18.0
12	TD36B	8.2	18.0
13	D36B	8.2	18.0
14	TD56D36	13.1	9.8
15	D56	13.1	18.0

1x S35 = 1x S35M  
1x D33 = 1x D33M

Otras zonas de viento o alturas superiores consultar / Other wind zones or additional hook heights on request / Autres zones de vent ou des hauteurs supplémentaires sur demande / Andere Windzonen oder weitere Hakenhöhen auf Anfrage / Per zone con velocità del vento particolari o altezze superiori consultare il fabbricante / При других ветренных зонах о при большой высоте проконсультируйтесь с нами