

2100 Series

DTA Doble Carro SR/DR Automático. / Double Trolley Automatic SR/DR. / Double Chariot SM/DM Automatique. / Doppel Katze mit automatischer Umschierung. / Carrello doppio SR/DR automatico. / Автоматическое переключение на сдвоенную каретку.

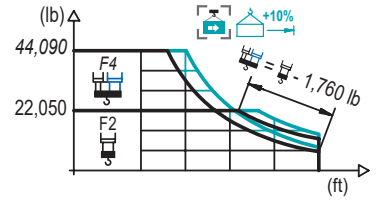
 EN 14439

DIAGRAMA DE CARGAS

Load chart / Diagramme de charges / Lastdiagramm / Diagramma di carico / Диаграмма распределения нагрузки

DTA

R	44,090 lb		22,050 lb		F4				F2									↔ (ft) ↕ (lb)
	↕	↕	↕	↕	32.8	49.2	65.6	82.0	98.4	114.8	131.2	147.6	164.0	180.4	196.9	210.0	229.7	
262.5	46.9 50.5	85.3 92.2	91.5 98.8	44,090	41,890 44,090	30,030 32,760	23,130 25,290	20,330 22,050	17,130 18,670	14,770 16,090	12,940 14,130	11,490 12,540	10,300 11,270	9,300 10,190	8,640 9,460	7,760 8,530	7,280 7,980	6,610 7,280
242.8	57.1 61.7	104.0 112.9	111.9 121.4	44,090	44,090	37,590 41,120	29,100 31,900	23,550 25,860	21,410 22,050	18,500 20,240	16,250 17,770	14,440 15,830	12,990 14,240	11,770 12,920	10,930 12,020	9,880 10,850	9,260 10,190	
229.7	62.3 67.6	114.2 124.0	123.0 133.5	44,090	44,090	41,690 35,490	32,360 28,840	26,230 24,140	22,050	20,520 19,780	18,030 17,610	16,070 15,870	14,460 15,870	13,120 14,420	12,190 13,400	11,020 12,130		
210.0	66.9 72.5	122.7 133.2	132.2 143.7	44,090	44,090	34,990 38,430	28,420 31,260	23,790 26,210	22,050	19,510 21,410	17,390 19,090	15,650 17,200	14,220 15,630	13,230 14,550				
196.9	71.9 78.1	131.6 143.4	142.1 154.9	44,090	44,090	37,900 41,670	30,820 33,950	25,840 28,480	22,130	21,140 22,050	18,850 20,720	16,980 18,670	15,430 16,980					
164.0	77.8 84.3	143.0 155.2	154.9 164.0	44,090	44,090	41,560 44,090	33,840 37,040	28,420 31,150	24,380	22,050	20,720							
131.2	81.0 87.9	128.9 128.9		44,090	44,090	43,430 38,850	35,410 32,670	29,740 28,620	26,010									

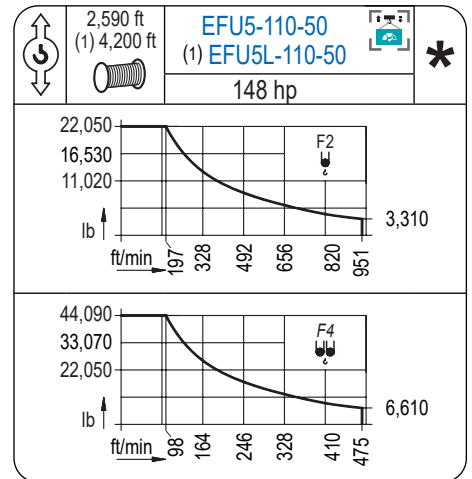
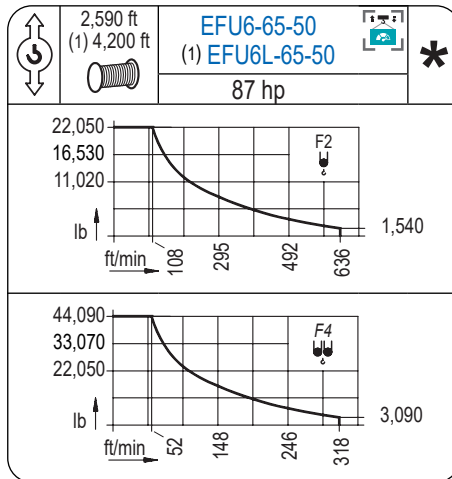
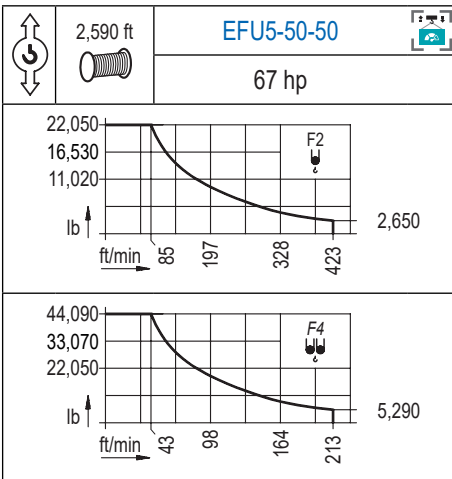


Datos válidos hasta 328 ft de ABG. Para alturas mayores consultar / Valid data up to 328 ft HUH. Additional heights on request / Données valables jusqu'à 328 ft HSC. Pour des autres hauteurs, merci de nous consulter / Gültige Daten bis zu 328 ft HH. Bei höheren Hakenhöhen nachfragen / Dati validi fino a 328 ft ASG. Per altezze superiori consultare Comansa / Допустимые данные до 328 фут ВПК. Для более высоких высот консультируйтесь

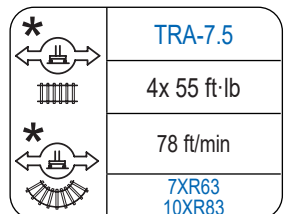
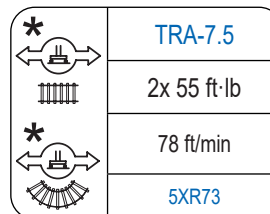
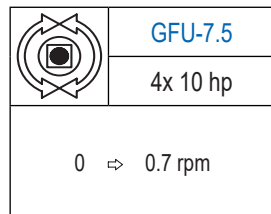
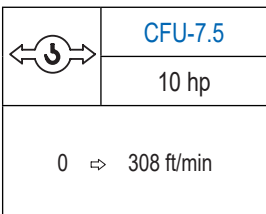
MECANISMOS

Mechanisms / Mécanismes / Antriebe / Meccanismi / Механизмы

2100 Series



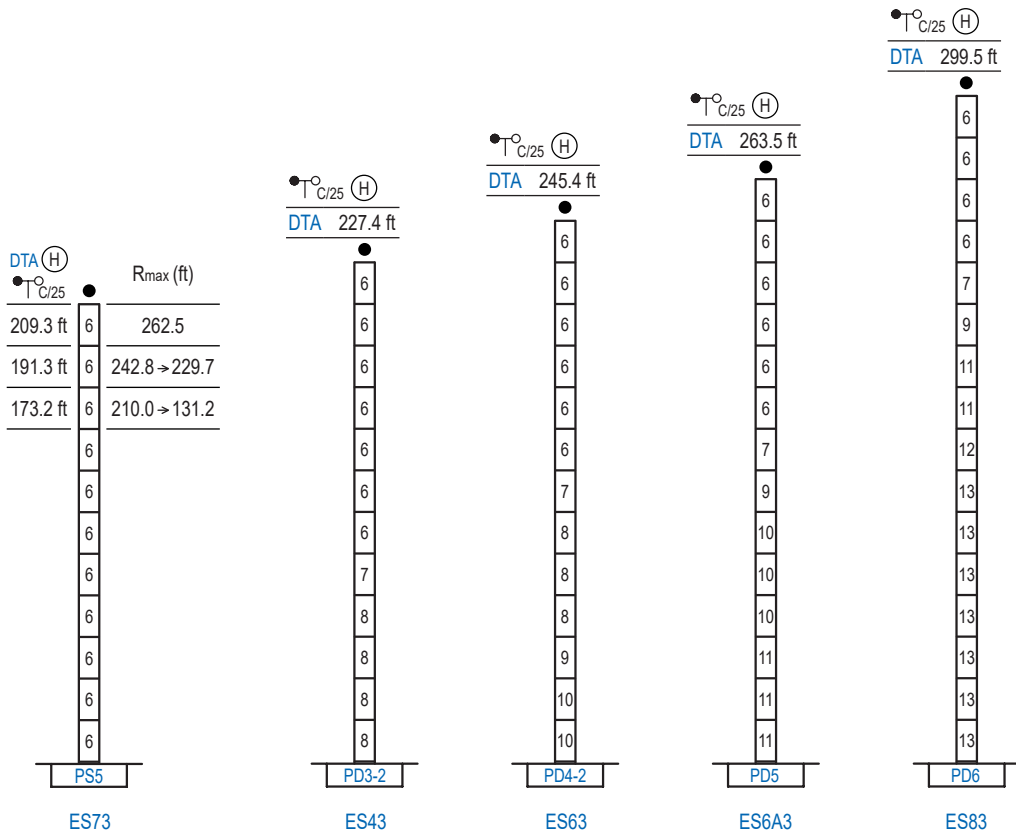
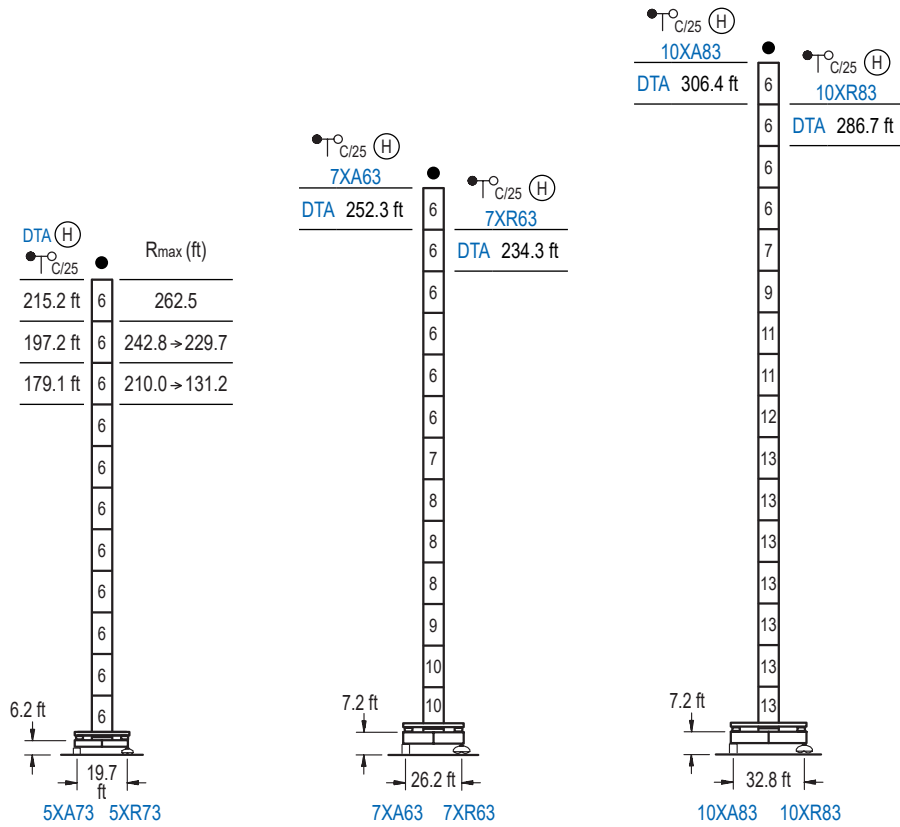
(1) Para mecanismos de alta capacidad de cable consultar cargas. / For mechanisms with high drum capacity, request loads. / Pour des mécanismes avec une grande capacité de câble il faut consulter. / Für Hubmechanismen mit hoher Kabelkapazität, Lastdiagramm anfragen. / Gru con tamburo ad alta capacità di avvolgimento fune, consultare il diagramma di carico. / Проконсультируйтесь о нагрузках при механизмах с большей вместимостью кабеля.



Elevación / Hoist / Levage / Hub / Sollevamento / Тип механизма (подъем)	Carro / Trolley / Chariot / Laufkatze / Carrello / Грузовая тележка	Giro / Slewing / Rotation / Drehbewegung / Rotazione / Поворот	Traslación / Travel / Translation / Verfahrbewegung / Traslazione / Ход	Tensión de alimentación / Operating voltage / Tension de service / Betriebsspannung / Tensione di alimentazione / Напряжение источника питания	Potencia requerida / Required power / Puissance requise / Benötigte Leistung / Potenza richiesta / требуемая мощность
EFU5-50-50	CFU-7.5	(4x) GFU-7.5	(2x) TRA-7.5 (4x) TRA-7.5	480 V 3 ph 60 Hz	80 kVA
EFU6-65-50					95 kVA
EFU6L-65-50					95 kVA
EFU5-110-50					140 kVA
EFU5L-110-50					140 kVA

Opcional / Optional / En option / Kaufoption / Opzionale / Опционально

*



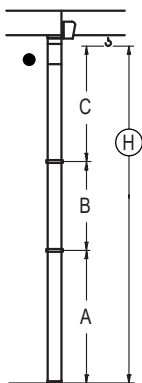
n°	Ref.	∅	h	n°	Ref.	∅	h	n°	Ref.	∅	h
6	S35	8.2	18.0	9	TD34	8.2	18.0	12	TD36B	8.2	18.0
7	TD33A	8.2	18.0	10	D34	8.2	18.0	13	D36B	8.2	18.0
8	D33	8.2	18.0	11	D35	8.2	18.0				
		1x S35 = 1x S35M									
		1x D33 = 1x D33M									

Otras zonas de viento o alturas superiores consultar / Other wind zones or additional hook heights on request / Autres zones de vent ou des hauteurs supplémentaires sur demande / Andere Windzonen oder weitere Hakenhöhen auf Anfrage / Per zone con velocità del vento particolari o altezze superiori consultare il fabbricante / При других ветренных зонах о большой высоте проконсультируйтесь с нами

GRÚA ARRIOSTRADA

Braced crane / Grue à entretoisement / Abgespannter Kran / Gru ancorata / Наращиваемый кран

∅ 8.2 ft



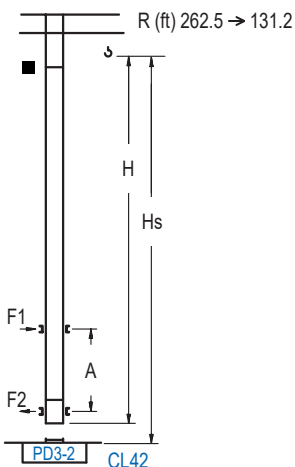
DTA (H) C/25	5XA73				7XA63		10XA83			
R	262.5	242.8 → 229.7	210.0 → 131.2	262.5 → 131.2	262.5 → 131.2	262.5 → 131.2	262.5 → 131.2			
A max A min	168.6 77.4	150.6 77.4	132.5 96.5	205.7 115.5	259.8 205.7	259.8 205.7	259.8 205.7			
B max B min	- 108.3 72.1	- 108.3 72.1	- 108.3 72.1	- 108.3 72.1	- 108.3 72.1	- 108.3 72.1	- 108.3 72.1			
C max	154.9	154.9	154.9	154.9	154.9	154.9	154.9			
H max	323.5	431.8	305.4	413.7	287.4	395.7	360.6	468.8	414.7	523.0

DTA (H) C/25	ES73				ES43		ES63		ES6A3		ES83			
R	262.5	242.8 → 229.7	210.0 → 131.2	262.5 → 131.2	262.5 → 131.2	262.5 → 131.2	262.5 → 131.2	262.5 → 131.2	262.5 → 131.2	262.5 → 131.2	262.5 → 131.2			
A max A min	162.7 90.6	144.7 90.6	126.6 90.6	180.8 90.6	198.8 33.1	216.9 126.6	253.0 198.8	253.0 198.8	253.0 198.8	253.0 198.8	253.0 198.8			
B max B min	- 108.3 72.1	- 108.3 72.1	- 108.3 72.1	- 108.3 72.1	- 108.3 72.1	- 108.3 72.1	- 108.3 72.1	- 108.3 72.1	- 108.3 72.1	- 108.3 72.1	- 108.3 72.1			
C max	154.9	154.9	154.9	154.9	154.9	154.9	154.9	154.9	154.9	154.9	154.9			
H max	317.6	425.9	299.5	407.8	281.5	389.8	335.6	443.9	353.7	461.9	371.7	480.0	407.8	516.1

GRÚA TREPADORA

Internal climbing crane / Grue avec cage de télescopage intérieure / Kran mit klettern im Gebäude / Gru in rampante in cavedio / Кран с самоподъемом

∅ 6.6 ft



DTA (H) C/25	Hs < 1,310 ft	
	A max (ft)	A min (ft)
163.7 ft 4x D23 + 4x D23A + CLD23A-12	64.3	29.5
145.7 ft 3x D23 + 4x D23A + CLD23A-12	55.1	26.2
127.6 ft 2x D23 + 4x D23A + CLD23A-12	46.3	23.0

Ref.	∅	h
D23	6.6	18.0
D23A	6.6	18.0
CLD23A-12	6.6	11.2

Otras zonas de viento, alturas superiores, arriostramientos o trepado interno consultar / Other wind zones, additional hook heights, tie frames or internal climbing on request / Autres zones de vent, des hauteurs supplémentaires, entretoisements ou grues avec cage de télescopage intérieure, sur demande / Andere Windzonen, weitere Hakenhöhen, Abspannungen zum Gebäude oder Klettern im Gebäude auf Anfrage / Per zone con velocità del vento particolari, altezze superiori, ancoraggi o rampante in cavedio, consultare il fabbricante / При других ветренных зонах, при большой высоте, привязках к зданию или наращивании крана внутри здания проконсультируйтесь с нами