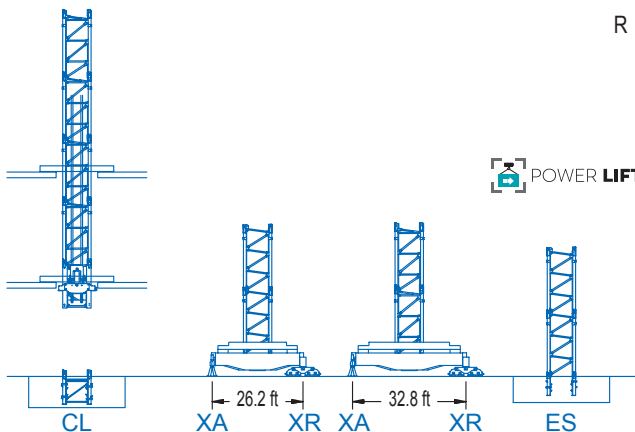
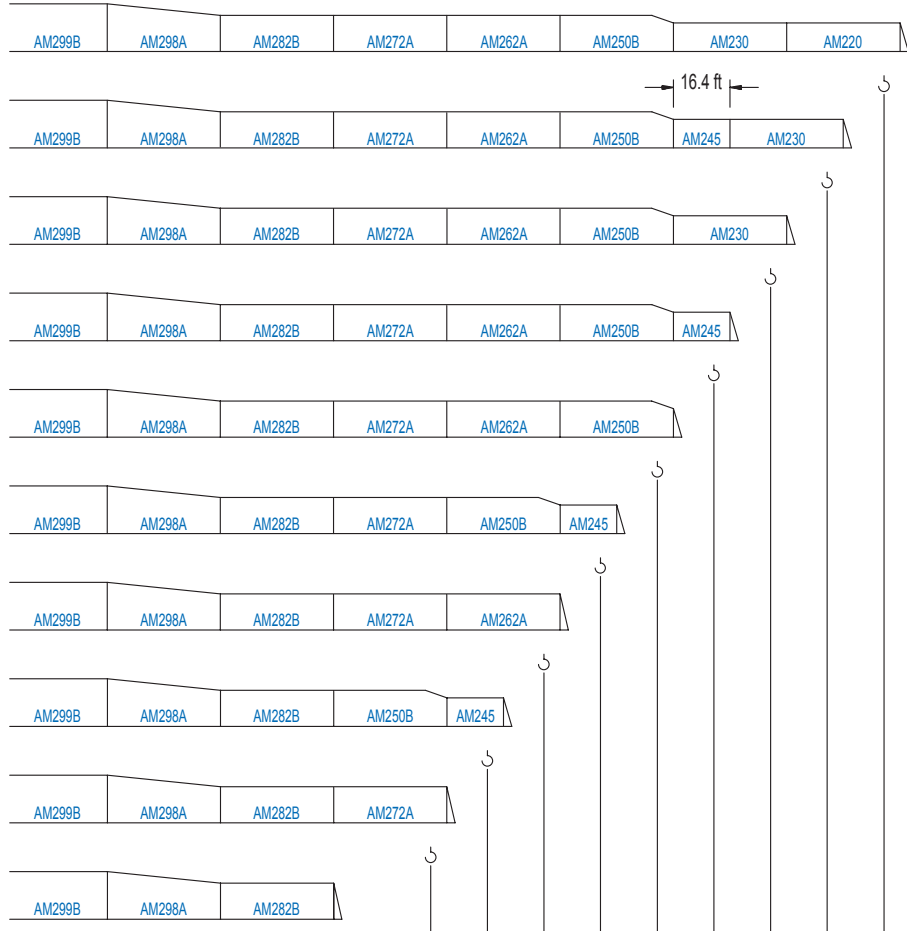
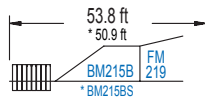
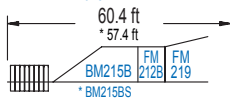
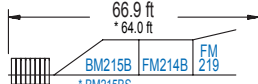
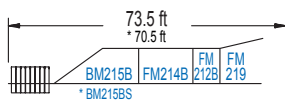
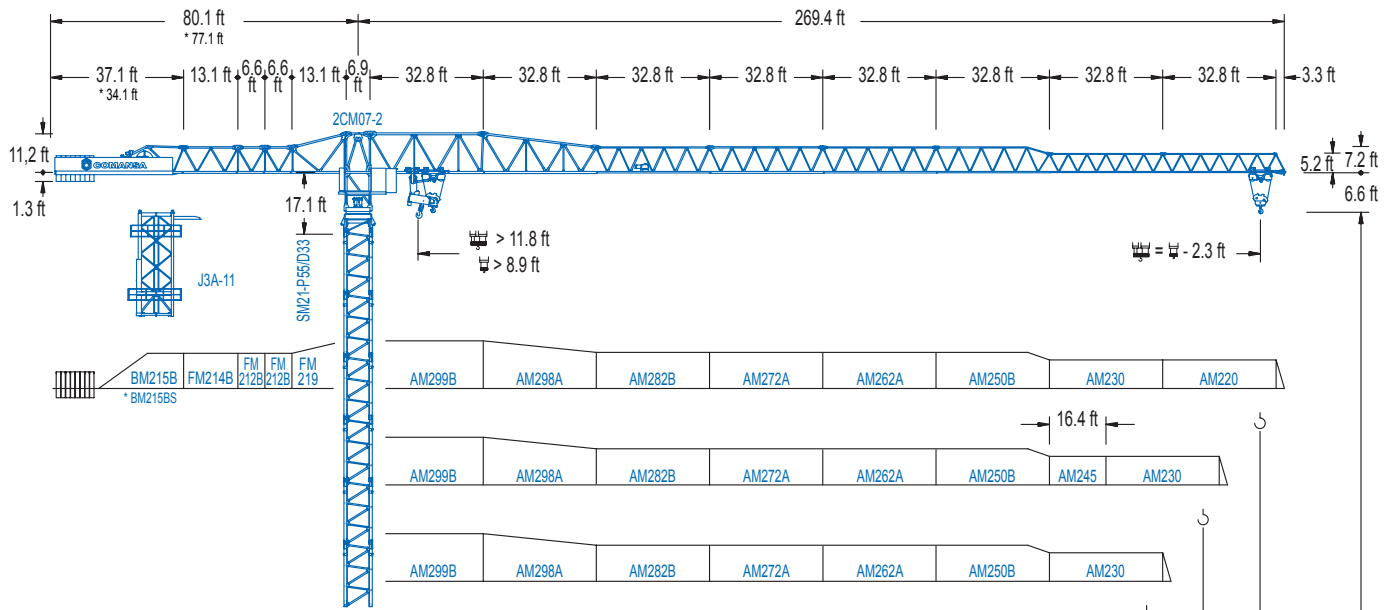


## 2100 Series

## 21 LC 600

## DT 44,090 lb



**POWER LIFT**

R	98.4	131.2	147.6	164.0	180.4	196.9	213.3	229.7	246.1	262.5	ft
	44,090	33,510	29,100	25,350	22,930	21,610	18,740	15,430	11,680	9,920	lb
	44,090	36,860	32,010	27,890	25,220	22,050	20,610	16,980	12,850	10,910	lb

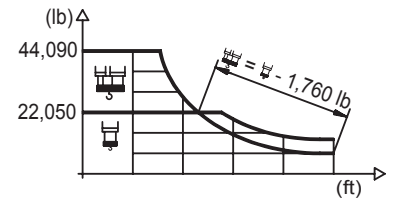
(H = H - 1.3 ft)

2100 Series

## DIAGRAMA DE CARGAS

Load chart / Diagramme de charges / Lastdiagramm / Diagramma di carico / Диаграмма распределения нагрузки

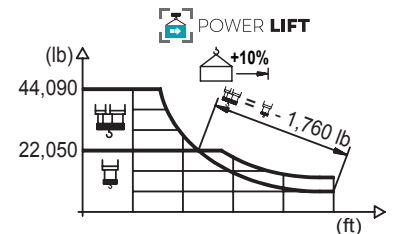
R (ft)	HSC						HSC									
262.5	65.0	75.5	82.0	91.9	98.4	119.1	128.0	147.6	164.0	180.4	196.9	213.3	229.7	246.1	262.5	ft
	44,090	37,280	33,910	29,810	27,540	22,050	22,050	18,850	16,800	15,120	13,730	12,540	11,550	10,670	9,920	lb
246.1	70.2	75.5	82.0	91.9	98.4	114.8	128.6	138.5	164.0	180.4	196.9	213.3	229.7	246.1		ft
	44,090	40,590	36,950	32,500	30,050	25,180	22,050	22,050	18,320	16,490	14,990	13,710	12,630	11,680		lb
229.7		83.3	91.9	98.4	114.8	131.2	153.5	165.7	180.4	196.9	213.3	229.7				ft
		44,090	39,570	36,620	30,780	26,460	22,050	22,050	20,080	18,280	16,730	15,430				lb
213.3			92.2	98.4	114.8	131.2	147.6	169.9	183.4	196.9	213.3					ft
			44,090	40,960	34,480	29,670	25,950	22,050	22,050	20,440	18,740					lb
196.9				96.8	114.8	131.2	147.6	178.8	193.2	196.9						ft
				44,090	36,440	31,370	27,450	22,050	22,050	21,610						lb
180.4					99.7	114.8	131.2	147.6	164.0	178.1						ft
					44,090	37,720	32,500	28,440	25,240	22,930						lb
164.0						98.8	114.8	131.2	147.6	161.7						ft
						44,090	37,350	32,170	28,150	25,350						lb
147.6							100.4	114.8	131.2	145.3						ft
							44,090	37,940	32,690	29,100						lb
131.2								101.0	114.8	128.9						ft
								44,090	38,180	33,510						lb
98.4									96.1							ft
									44,090							lb



## DIAGRAMA DE CARGAS POWERLIFT

Load chart PowerLift / Diagramme de charges PowerLift / Lastdiagramm PowerLift / Diagramma di carico PowerLift / Диаграмма распределения нагрузки PowerLift

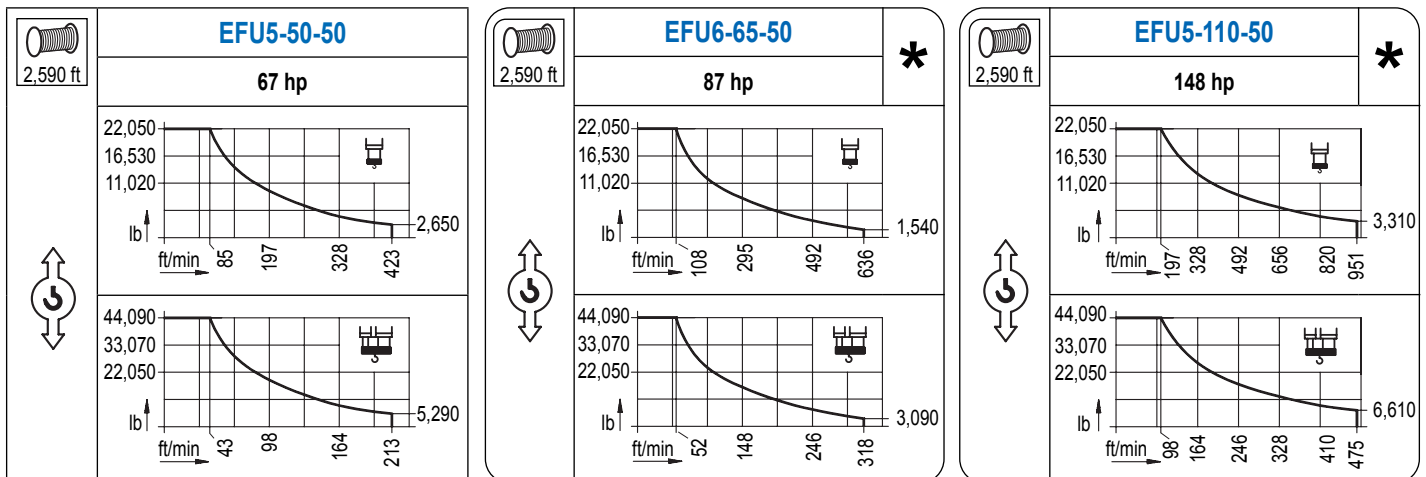
R (ft)	HSC						HSC									
262.5	70.5	75.5	82.0	91.9	98.4	114.8	129.3	139.1	164.0	180.4	196.9	213.3	229.7	246.1	262.5	ft
	44,090	40,810	37,150	32,670	30,200	25,310	22,050	22,050	18,390	16,580	15,060	13,780	12,680	11,730	10,910	lb
246.1		76.1	82.0	91.9	98.4	114.8	140.1	150.6	164.0	180.4	196.9	213.3	229.7	246.1		ft
		44,090	40,520	35,670	33,000	27,690	22,050	22,050	20,080	18,100	16,450	15,060	13,890	12,850		lb
229.7			90.9	98.4	114.8	131.2	147.6	167.3	180.4	196.9	213.3	229.7				ft
			44,090	40,280	33,880	29,140	25,490	22,050	22,050	20,080	18,410	16,980				lb
213.3				100.4	114.8	131.2	147.6	164.0	185.7	200.5	213.3					ft
				44,090	37,960	32,720	28,640	25,400	22,050	22,050	20,610					lb
196.9					105.3	114.8	131.2	147.6	164.0	180.4	194.6					ft
					44,090	40,040	34,500	30,230	26,830	24,070	22,050					lb
180.4						108.3	114.8	131.2	147.6	164.0	178.1					ft
						44,090	41,310	35,630	31,240	27,730	25,220					lb
164.0							107.3	114.8	131.2	147.6	161.7					ft
							44,090	40,960	35,320	30,950	27,890					lb
147.6								109.3	114.8	131.2	145.3					ft
								44,090	41,670	35,930	32,010					lb
131.2									109.9	114.8	128.9					ft
									44,090	41,980	36,860					lb
98.4										96.1						ft
										44,090						lb



Datos válidos hasta 328 ft de ABG. Para alturas mayores consultar / Valid data up to 328 ft HUH. Additional heights on request / Données valables jusqu'à 328 ft HSC. Pour des autres hauteurs, merci de nous consulter / Gültige Daten bis zu 328 ft HH. Bei höheren Hakenhöhen nachfragen / Dati validi fino a 328 ft ASG. Per altezze superiori consultare Comansa / Допустимые данные до 328 фут ВПК. Для более высоких высот консультируйтесь

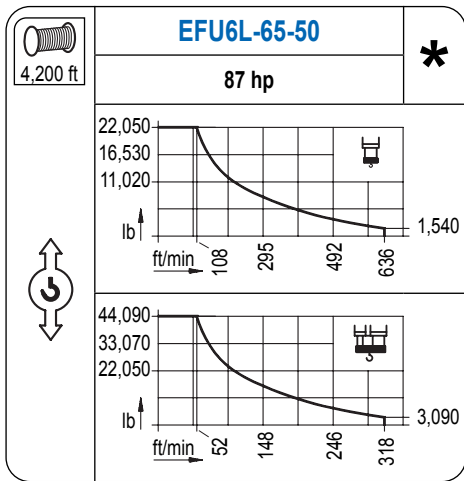
## MECANISMOS

Mechanisms / Mécanismes / Antriebe / Meccanismi / Механизмы

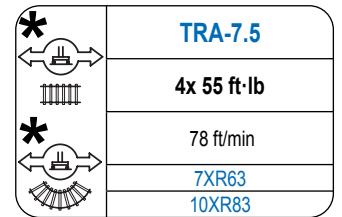
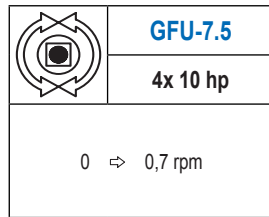
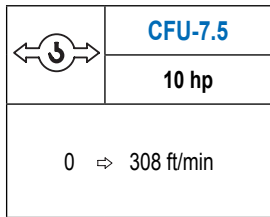
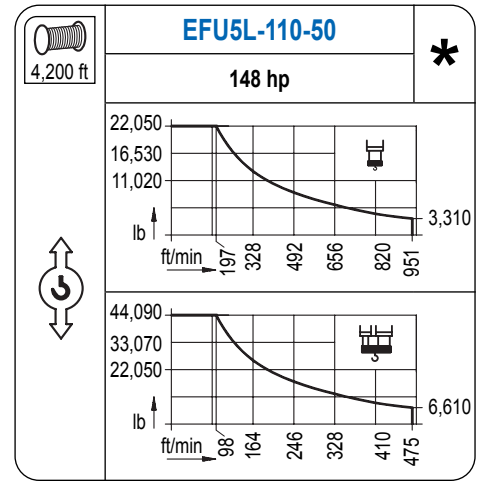


# MECANISMOS

Mechanisms / Mécanismes / Antriebe / Meccanismi / Механизмы



Para mecanismos de alta capacidad de cable consultar cargas. / For mechanisms with high drum capacity, request loads. / Pour des mécanismes avec une grande capacité de câble il faut consulter. / Für Hubmechanismen mit hoher Kabelkapazität, Lastdiagramm anfragen. / Gru con tamburo ad alta capacità di avvolgimento fune, consultate il diagramma di carico. / Проконсультируйтесь о нагрузках при механизмах с большей вместимостью кабеля.



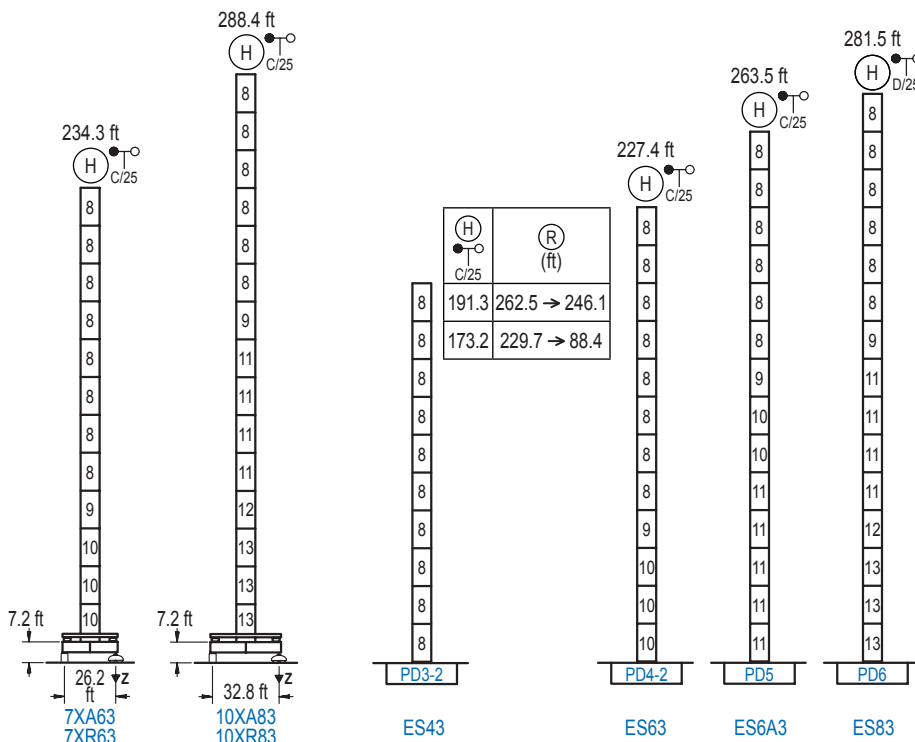
Elevación / Hoist / Levage / Hub / Sollevamento / Тип механизма (подъем)	Carro / Trolley / Chariot / Laufkatze / Carrello / Грузовая тележка	Giro / Slewing / Rotation / Drehbewegung / Rotazione / Поворот	Traslación / Travel / Translation / Verfahrbewegung / Traslazione / Ход	Tensión de alimentación / Operating voltage / Tension de service / Betriebsspannung / Tensione di alimentazione / Напряжение источника питания	Potencia requerida / Required power / Puissance requise / Benötigte Leistung / Potenza richiesta / требуемая мощность
EFU5-50-50	CFU-7.5	(4x) GFU-7.5	(4x) TRA-7.5	480 V 3 ph 60 Hz	80 kVA
EFU6-65-50					95 kVA
EFU6L-65-50					95 kVA
EFU5-110-50					140 kVA
EFU5L-110-50					140 kVA

Optional / Optional / En option / Kaufoption / Opzionale / Опционально  
\*

## ALTURAS BAJO GANCHO

Heights under hook / Hauteurs sous crochet / Hakenhöhen / Altezza sotto gancio / Высота под крюком

∅ 8.2 ft



n°	Ref.	∅	h
8	D33	8.2	18.0
9	TD34	8.2	18.0
10	D34	8.2	18.0
11	D35	8.2	18.0
12	TD36B	8.2	18.0
13	D36B	8.2	18.0

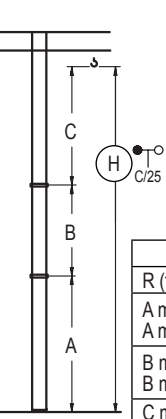
1x D33 = 1x D33M

Z máx.	En servicio / In operation / En service / In Betrieb / In servizio / При работе	7XR63...291 kip 10XR83...302 kip
	Fuera de servicio / Out of service / Hors service / Ausser Betrieb / Fuori servizio / В стационарном состоянии	7XR63...295 kip 10XR83...403 kip

Otras zonas de viento o alturas superiores consultar / Other wind zones or additional hook heights on request / Autres zones de vent ou des hauteurs supplémentaires sur demande / Andere Windzonen oder weitere Hakenhöhen auf Anfrage / Per zone con velocità del vento particolari o altezze superiori consultare il fabbricante / При других ветренных зонах о при большой высоте проконсультируйтесь с нами

## GRÚA ARRIOSTRADA

Braced crane / Grue à entretoisement / Abgespannter Kran / Gru ancorata / Нарастиваемый кран

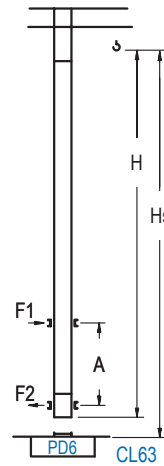


	7XA63		10XA83	
R (ft)	262.5 > 88.4		262.5 > 88.4	
A max	187.7		241.8	
A min	97.4		169.6	
B max	90.2		90.2	
B min	72.2		72.2	
C max	136.8	136.8	136.8	136.8
H max	324.5	414.7	378.6	468.8

	ES43		ES63		ES6A3		ES83	
R (ft)	262.5 > 246.1		229.7 > 88.4		262.5 > 88.4		262.5 > 88.4	
A max	144.7		126.6		180.8		216.9	
A min	72.5		72.5		90.6		144.7	
B max	-	108.3	-	108.3	-	90.2	-	90.2
B min	-	72.2	-	72.2	-	72.2	-	72.2
C max	154.9	136.8	47.2	136.8	136.8	136.8	136.8	136.8
H max	299.5	389.8	281.5	371.7	317.6	407.8	353.7	443.9

## GRÚA TREPADORA

Internal climbing crane / Grue avec cage de télescopage intérieure / Kran mit Klettern im Gebäude / Gru in rampante in cavedio / Кран с самоподъемом



Hook	Hs < 1,310 ft	
	A max (ft)	A min (ft)
203.4 ft 5x D33 + TD34 + 4x D34A + CLD34A-24	71.9	32.8
185.4 ft 4x D33 + TD34 + 4x D34A + CLD34A-24	62.7	26.2
167.3 ft 3x D33 + TD34 + 4x D34A + CLD34A-24	53.8	26.2

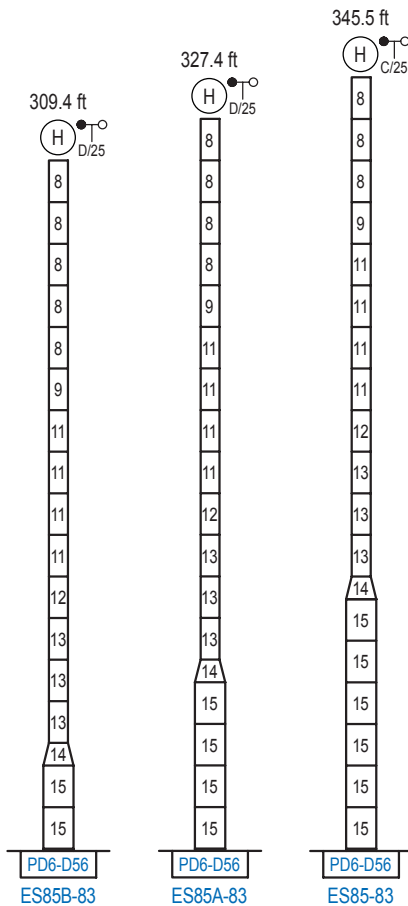
n°	Ref.	h	h
8	D33	8.2	18.0
9	TD34	8.2	18.0
20	D34A	8.2	18.0
21	CLD34A-24	8.2	12.5
1x D33 = 1x D33M			

Otras zonas de viento, alturas superiores, arriostramientos o trepado interno consultar / Other wind zones, additional hook heights, tie frames or internal climbing on request / Autres zones de vent, des hauteurs supplémentaires, entretoisements ou grues avec cage de télescopage intérieure, sur demande / Andere Windzonen, weitere Hakenhöhen, Abspannungen zum Gebäude oder Klettern im Gebäude auf Anfrage / Per zone con velocità del vento particolari, altezze superiori, ancoraggi o rampante in cavedio, consultare il fabbricante / При других ветренных зонах, при большой высоте, привязках к зданию или наращивании крана внутри здания проконсультируйтесь с нами

## ALTURAS ESPECIALES

Special heights / Spéciaux hauteurs / Extra Höhen / Conformazioni raccordate per altezze speciali / Для специальной высоты

Ø 13.1 ft



n°	Ref.	h	h
8	D33	8.2	18.0
9	TD34	8.2	18.0
10	D34	8.2	18.0
11	D35	8.2	18.0
12	TD36B	8.2	18.0
13	D36B	8.2	18.0
14	TD56D36	13.1	9.8
15	D56	13.1	18.0
1x D33 = 1x D33M			

Otras zonas de viento o alturas superiores consultar / Other wind zones or additional hook heights on request / Autres zones de vent ou des hauteurs supplémentaires sur demande / Andere Windzonen oder weitere Hakenhöhen auf Anfrage / Per zone con velocità del vento particolari o altezze superiori consultare il fabbricante / При других ветренных зонах о большой высоте проконсультируйтесь с нами