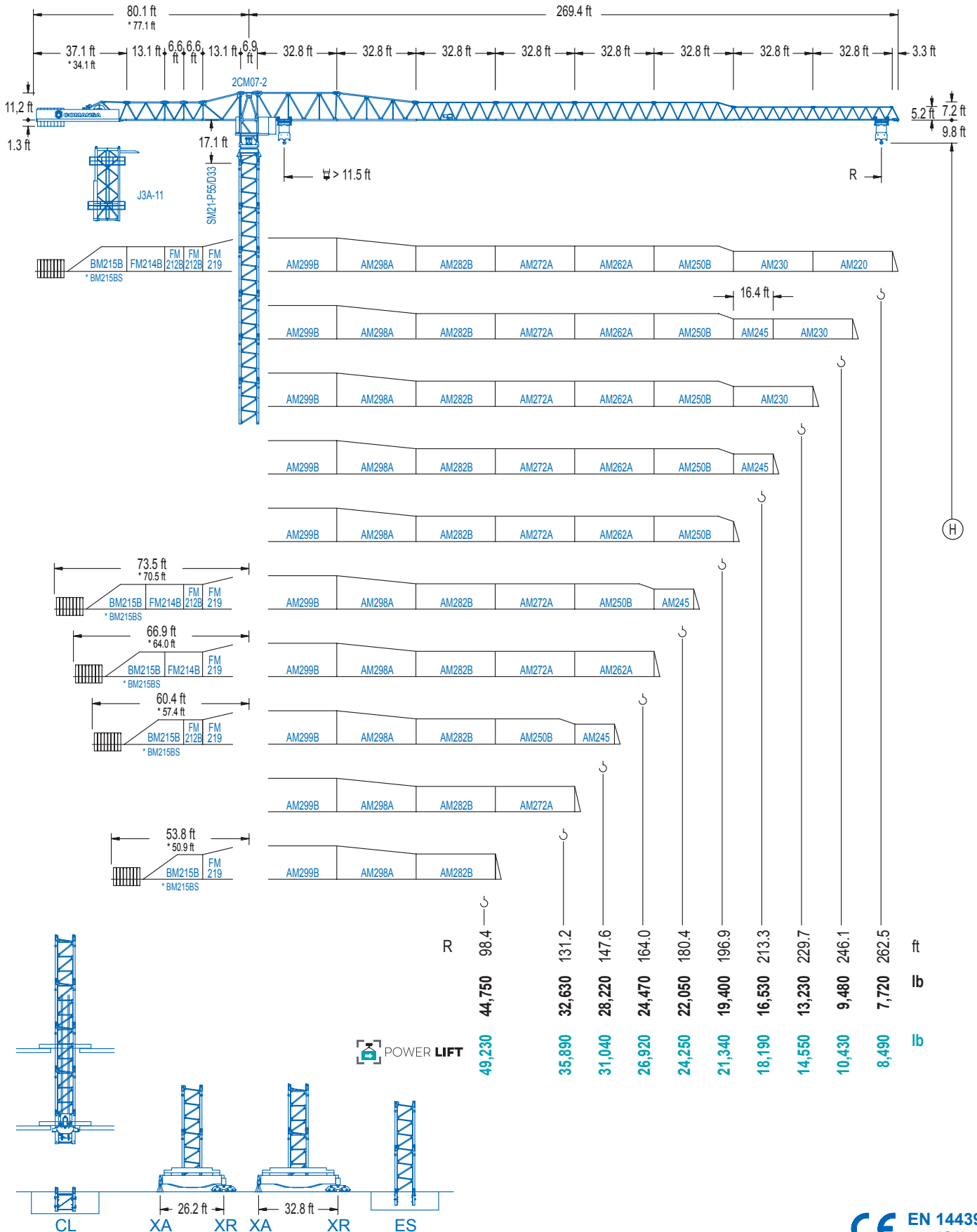


2100 Series

21 LC 600

ST 55,120 lb



2100 Series

DIAGRAMA DE CARGAS

Load chart / Diagramme de charges / Lastdiagramm / Diagramma di carico / Диаграмма распределения нагрузки

R (ft)	H																	
262.5	51.8	59.1	65.6	75.5	82.0	91.9	98.4	114.8	131.2	147.6	164.0	180.4	196.9	213.3	229.7	246.1	262.5	ft
	55,120	47,640	42,260	36,050	32,780	28,770	26,570	22,180	18,920	16,400	14,400	12,760	11,420	10,270	9,300	8,470	7,720	lb
246.1		56.1	65.6	75.5	82.0	91.9	98.4	114.8	131.2	147.6	164.0	180.4	196.9	213.3	229.7	246.1	ft	
		55,120	46,270	39,510	35,930	31,590	29,190	24,430	20,880	18,120	15,960	14,180	12,700	11,460	10,410	9,480	lb	
229.7			67.3	75.5	82.0	91.9	98.4	114.8	131.2	147.6	164.0	180.4	196.9	213.3	229.7	ft		
			55,120	48,390	44,090	38,820	35,910	30,160	25,880	22,580	19,930	17,790	16,010	14,510	13,230	lb		
213.3				74.5	82.0	91.9	98.4	114.8	131.2	147.6	164.0	180.4	196.9	213.3	ft			
				55,120	49,490	43,630	40,390	33,970	29,190	25,510	22,580	20,190	18,210	16,530	lb			
196.9					78.4	82.0	91.9	98.4	114.8	131.2	147.6	164.0	180.4	196.9	ft			
					55,120	52,430	46,230	42,810	36,050	31,000	27,120	24,010	21,490	19,400	lb			
180.4						80.1	91.9	98.4	114.8	131.2	147.6	164.0	180.4	ft				
						55,120	47,330	43,850	36,910	31,770	27,780	24,630	22,050	lb				
164.0							79.7	91.9	98.4	114.8	131.2	147.6	164.0	ft				
							55,120	47,050	43,580	36,680	31,570	27,620	24,470	lb				
147.6								81.0	91.9	98.4	114.8	131.2	147.6	ft				
								55,120	48,040	44,490	37,480	32,250	28,220	lb				
131.2									82.0	91.9	98.4	114.8	131.2	ft				
									55,120	48,590	45,000	37,900	32,630	lb				
98.4										81.7	91.9	98.4	ft					
										55,120	48,300	44,750	lb					

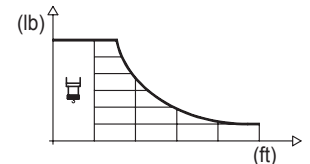
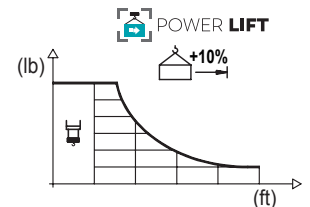


DIAGRAMA DE CARGAS POWERLIFT

Load chart PowerLift / Diagramme de charges PowerLift / Lastdiagramm PowerLift / Diagramma di carico PowerLift / Диаграмма распределения нагрузки PowerLift

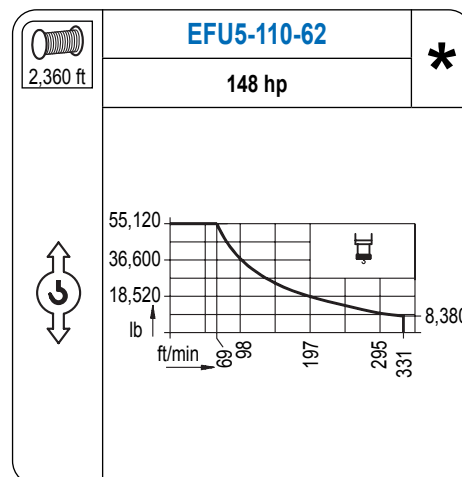
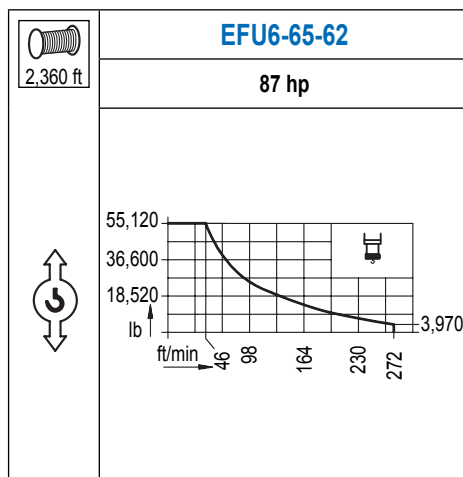
R (ft)	H																	
262.5	55.4	59.1	65.6	75.5	82.0	91.9	98.4	114.8	131.2	147.6	164.0	180.4	196.9	213.3	229.7	246.1	262.5	ft
	55,120	51,230	45,480	38,820	35,320	31,040	28,660	23,990	20,480	17,790	15,650	13,910	12,460	11,220	10,190	9,280	8,490	lb
246.1		60.0	65.6	75.5	82.0	91.9	98.4	114.8	131.2	147.6	164.0	180.4	196.9	213.3	229.7	246.1	ft	
		55,120	49,980	42,700	38,870	34,190	31,610	26,480	22,660	19,730	17,390	15,480	13,890	12,570	11,420	10,430	lb	
229.7			72.2	82.0	91.9	98.4	114.8	131.2	147.6	164.0	180.4	196.9	213.3	229.7	ft			
			55,120	47,880	42,200	39,070	32,850	28,220	24,650	21,800	19,490	17,570	15,940	14,550	lb			
213.3				80.4	91.9	98.4	114.8	131.2	147.6	164.0	180.4	196.9	213.3	ft				
				55,120	47,550	44,050	37,080	31,920	27,910	24,740	22,160	20,000	18,190	lb				
196.9					85.0	91.9	98.4	114.8	131.2	147.6	164.0	180.4	196.9	ft				
					55,120	50,490	46,760	39,420	33,950	29,720	26,340	23,610	21,340	lb				
180.4						86.6	91.9	98.4	114.8	131.2	147.6	164.0	180.4	ft				
						55,120	51,740	47,950	40,410	34,830	30,490	27,050	24,250	lb				
164.0							86.3	91.9	98.4	114.8	131.2	147.6	164.0	ft				
							55,120	51,500	47,730	40,210	34,660	30,340	26,920	lb				
147.6								88.3	91.9	98.4	114.8	131.2	147.6	ft				
								55,120	52,650	48,790	41,120	35,430	31,040	lb				
131.2									89.2	98.4	114.8	131.2	ft					
									55,120	49,380	41,640	35,890	lb					
98.4										88.9	98.4	ft						
										55,120	49,230	lb						



Datos válidos hasta 328 ft de ABG. Para alturas mayores consultar / Valid data up to 328 ft HUH. Additional heights on request / Données valables jusqu'à 328 ft HSC. Pour des autres hauteurs, merci de nous consulter / Gültige Daten bis zu 328 ft HH. Bei höheren Hakenhöhen nachfragen / Dati validi fino a 328 ft ASG. Per altezze superiori consultare Comansa / Допустимые данные до 328 фут ВПК. Для более высоких высот консультируйтесь

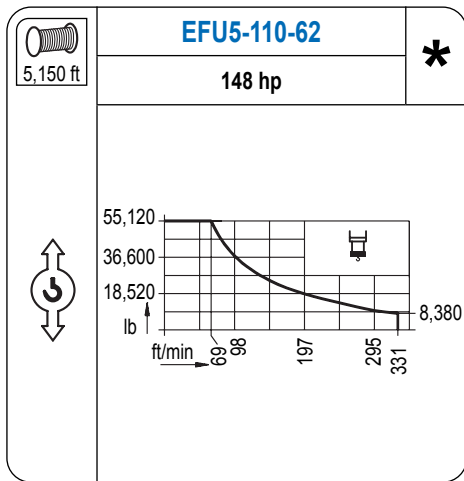
MECANISMOS

Mechanisms / Mécanismes / Antriebe / Meccanismi / Механизмы

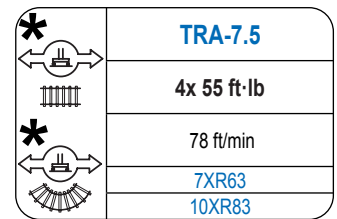
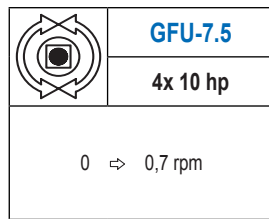
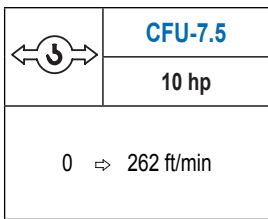


MECANISMOS

Mechanisms / Mécanismes / Antriebe / Meccanismi / Механизмы



Para mecanismos de alta capacidad de cable consultar cargas. / For mechanisms with high drum capacity, request loads. / Pour des mécanismes avec une grande capacité de câble il faut consulter. / Für Hubmechanismen mit hoher Kabelkapazität, Lastdiagramm anfragen. / Gru con tamburo ad alta capacità di avvolgimento fune, consultare il diagramma di carico. / Проконсультируйтесь о нагрузках при механизмах с большей вместимостью кабеля.



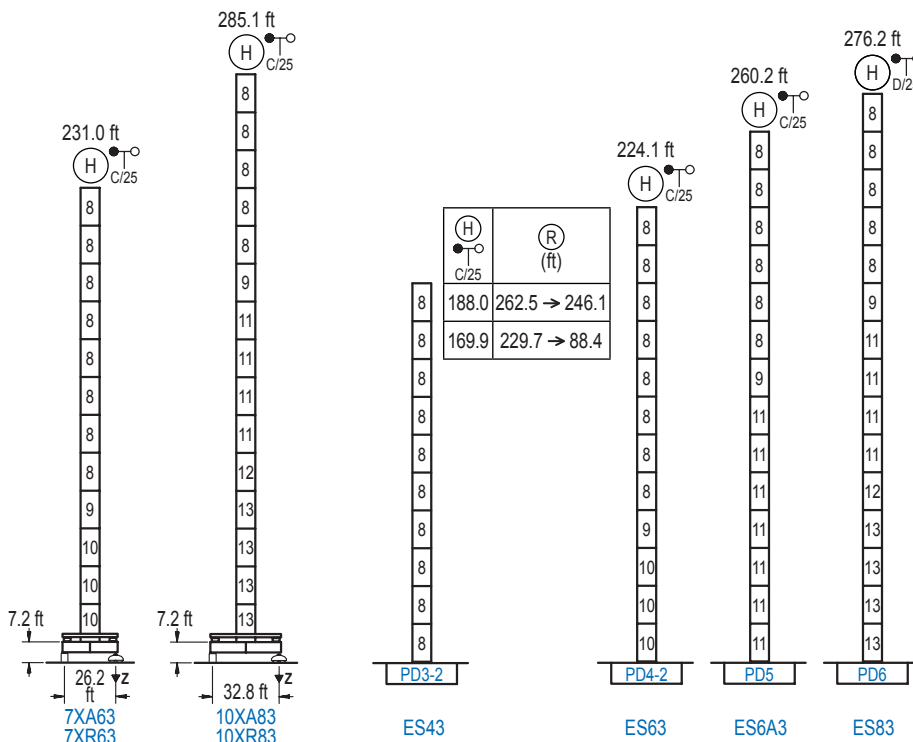
Elevación / Hoist / Levage / Hub / Sollevamento / Тип механизма (подъем)	Carro / Trolley / Chariot / Laufkatze / Carrelo / Грузовая тележка	Giro / Slewing / Rotation / Drehbewegung / Rotazione / Поворот	Traslación / Travel / Translation / Verfahrbewegung / Traslazione / Ход	Tensión de alimentación / Operating voltage / Tension de service / Betriebsspannung / Tensione di alimentazione / Напряжение источника питания	Potencia requerida / Required power / Puissance requise / Benötigte Leistung / Potenza richiesta / требуемая мощность
EFU6-65-62	CFU-7.5	(4x) GFU-7.5	(4x) TRA-7.5	480 V	95 kVA
EFU5-110-62				3 ph	140 kVA
EFU5L-110-62				60 Hz	140 kVA

Optional / Optionale / Опционально
*

ALTURAS BAJO GANCHO

Heights under hook / Hauteurs sous crochet / Hakenhöhen / Altezza sotto gancio / Высота под крюком

∅ 8.2 ft



n°	Ref.	∅	h
8	D33	8.2	18.0
9	TD34	8.2	18.0
10	D34	8.2	18.0
11	D35	8.2	18.0
12	TD36B	8.2	18.0
13	D36B	8.2	18.0

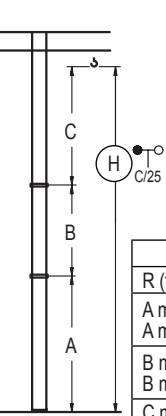
1x D33 = 1x D33M

Z máx.	En servicio / In operation / En service / In Betrieb / In servizio / При работе	7XR63... 295 kip 10XR83... 309 kip
	Fuera de servicio / Out of service / Hors service / Ausser Betrieb / Fuori servizio / В стационарном состоянии	7XR63... 295 kip 10XR83... 410 kip

Otras zonas de viento o alturas superiores consultar / Other wind zones or additional hook heights on request / Autres zones de vent ou des hauteurs supplémentaires sur demande / Andere Windzonen oder weitere Hakenhöhen auf Anfrage / Per zone con velocità del vento particolari o altezze superiori consultare il fabbricante / При других ветренных зонах о при большой высоте проконсультируйтесь с нами

GRÚA ARRIOSTRADA

Braced crane / Grue à entretoisement / Abgespannter Kran / Gru ancorata / Нарастиваемый кран

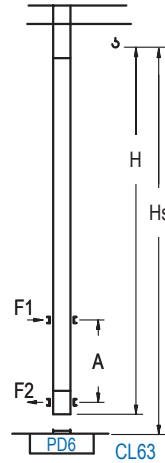


	7XA63		10XA83	
R (ft)	262.5 > 88.4		262.5 > 88.4	
A max	187.7		241.8	
A min	97.4		169.6	
B max	-	90.2	-	90.2
B min	-	72.2	-	72.2
C max	133.5	133.5	133.5	133.5
H max	321.2	411.4	375.3	465.6

	ES43		ES63		ES6A3		ES83	
R (ft)	262.5 > 246.1		229.7 > 88.4		262.5 > 88.4		262.5 > 88.4	
A max	144.7		126.6		180.8		216.9	
A min	72.5		72.5		90.6		144.7	
B max	-	108.3	-	108.3	-	90.2	-	90.2
B min	-	72.2	-	72.2	-	72.2	-	72.2
C max	151.6	133.5	151.6	133.5	133.5	133.5	133.5	133.5
H max	296.3	386.5	278.2	368.4	314.3	404.5	350.4	440.6

GRÚA TREPADORA

Internal climbing crane / Grue avec cage de télescopage intérieure / Kran mit Klettern im Gebäude / Gru in rampante in cavedio / Кран с самоподъемом



H C/25	Hs < 1,310 ft	
	A max (ft)	A min (ft)
200.1 ft 5x D33 + TD34 + 4x D34A + CLD34A-24	71.9	32.8
182.1 ft 4x D33 + TD34 + 4x D34A + CLD34A-24	62.7	26.2
164.0 ft 3x D33 + TD34 + 4x D34A + CLD34A-24	53.8	26.2

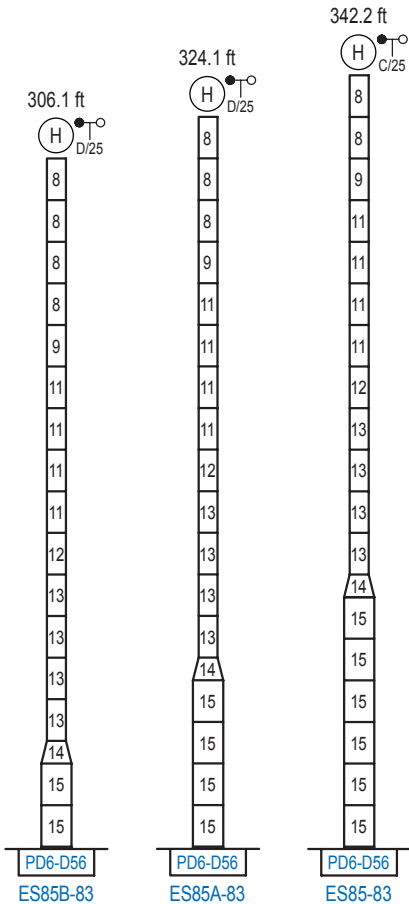
n°	Ref.	h	h
8	D33	8.2	18.0
9	TD34	8.2	18.0
20	D34A	8.2	18.0
21	CLD34A-24	8.2	12.5
1x D33 = 1x D33M			

Otras zonas de viento, alturas superiores, arriostramientos o trepado interno consultar / Other wind zones, additional hook heights, tie frames or internal climbing on request / Autres zones de vent, des hauteurs supplémentaires, entretoisements ou grues avec cage de télescopage intérieure, sur demande / Andere Windzonen, weitere Hakenhöhen, Abspannungen zum Gebäude oder Klettern im Gebäude auf Anfrage / Per zone con velocità del vento particolari, altezze superiori, ancoraggi o rampante in cavedio, consultare il fabbricante / При других ветренных зонах, при большой высоте, привязках к зданию или наращивании крана внутри здания проконсультируйтесь с нами

ALTURAS ESPECIALES

Special heights / Spéciaux hauteurs / Extra Höhen / Conformazioni raccordate per altezze speciali / Для специальной высоты

Ø 13.1 ft



n°	Ref.	h	h
8	D33	8.2	18.0
9	TD34	8.2	18.0
10	D34	8.2	18.0
11	D35	8.2	18.0
12	TD36B	8.2	18.0
13	D36B	8.2	18.0
14	TD56D36	13.1	9.8
15	D56	13.1	18.0
1x D33 = 1x D33M			

Otras zonas de viento o alturas superiores consultar / Other wind zones or additional hook heights on request / Autres zones de vent ou des hauteurs supplémentaires sur demande / Andere Windzonen oder weitere Hakenhöhen auf Anfrage / Per zone con velocità del vento particolari o altezze superiori consultare il fabbricante / При других ветренных зонах о большой высоте проконсультируйтесь с нами