

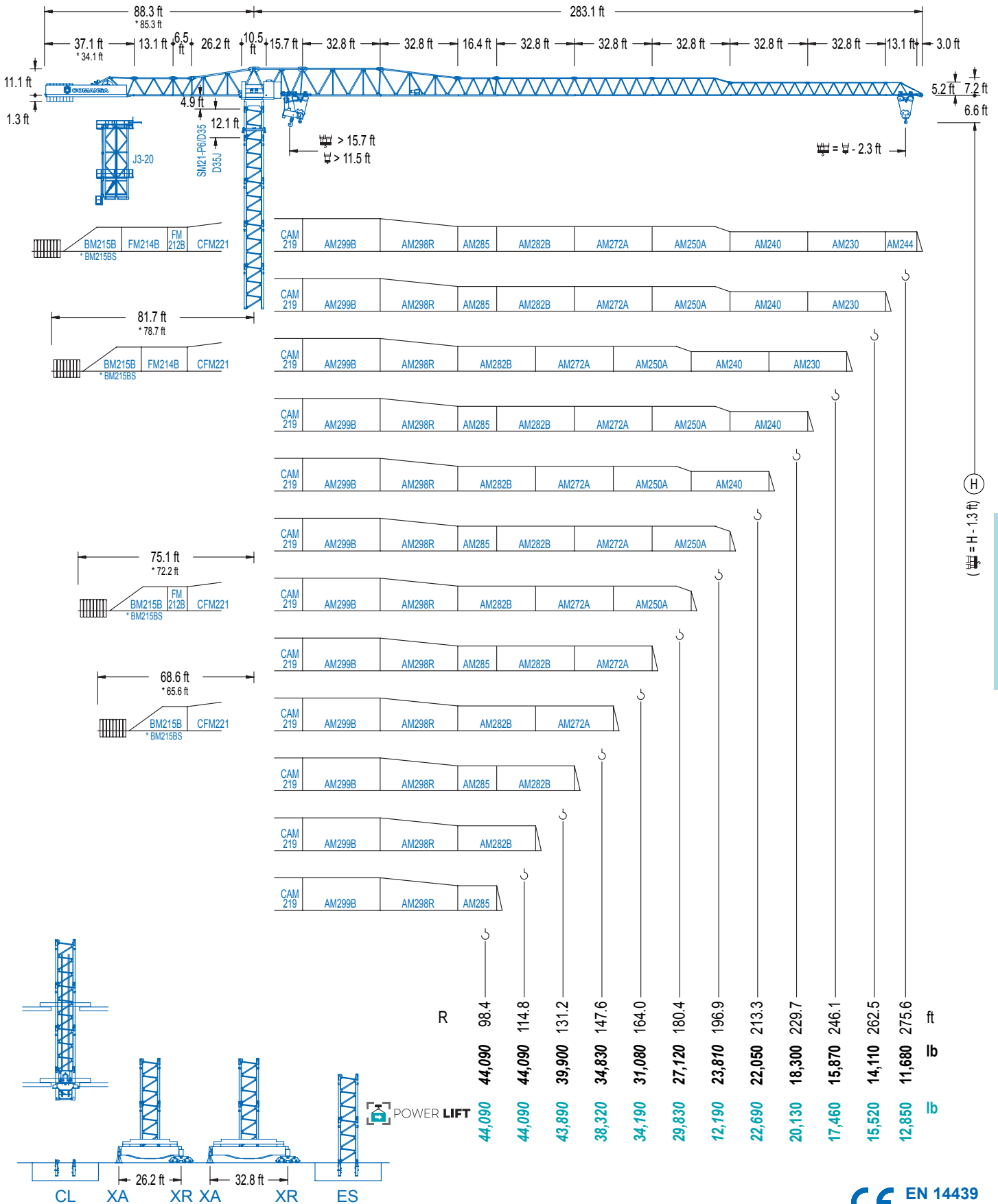


**COMANSA**

**2100 Series**

**21 LC 660**

**44,090 lb**



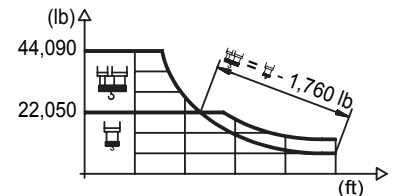
**2100 Series**

**CE EN 14439 (C/25)**

## DIAGRAMA DE CARGAS

Load chart / Diagramme de charges / Lastdiagramm / Diagramma di carico / Диаграмма распределения нагрузки

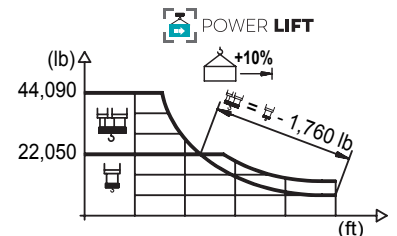
R (ft)	HSC								HSC								
275.6	79.7 44,090	91.9 37,410	98.4 34,570	108.3 30,970	114.8 28,950	124.7 26,300	131.2 24,780	145.0 22,050	155.8 22,050	180.4 18,740	196.9 17,020	213.3 15,590	229.7 14,350	246.1 13,270	262.5 12,350	275.6 11,680	ft lb
262.5		89.2 44,090	98.4 39,370	108.3 35,320	114.8 33,020	124.7 30,050	131.2 28,330	147.6 24,710	162.7 22,050	175.2 22,050	196.9 19,400	213.3 17,770	229.7 16,360	246.1 15,170	262.5 14,110	ft lb	
246.1		92.5 44,090	98.4 41,160	108.3 36,950	114.8 34,550	124.7 31,440	131.2 29,650	147.6 25,880	169.6 22,050	182.4 22,050	196.9 20,280	213.3 18,580	229.7 17,130	246.1 15,870	ft lb		
229.7			98.1 44,090	108.3 39,420	114.8 36,880	124.7 33,600	131.2 31,680	147.6 27,690	164.0 24,520	179.8 22,050	193.6 22,050	213.3 19,840	229.7 18,300	ft lb			
213.3				108.6 44,090	114.8 41,380	124.7 37,720	131.2 35,600	147.6 31,150	164.0 27,620	180.4 24,760	199.5 22,050	213.3 22,050	ft lb				
196.9					113.2 44,090	124.7 39,550	131.2 37,320	147.6 32,670	164.0 28,990	180.4 25,990	194.6 23,810	ft lb					
180.4						115.8 44,090	124.7 40,650	131.2 38,380	147.6 33,620	164.0 29,830	178.1 27,120	ft lb					
164.0							118.8 44,090	124.7 41,710	131.2 39,400	147.6 34,500	161.7 31,080	ft lb					
147.6								118.1 44,090	124.7 41,450	131.2 39,110	145.3 34,830	ft lb					
161.2									118.1 44,090	124.7 41,490	128.9 39,900	ft lb					
114.8									112.5 44,090	ft lb							
98.4										96.1 44,090	ft lb						



## DIAGRAMA DE CARGAS POWERLIFT

Load chart PowerLift / Diagramme de charges PowerLift / Lastdiagramm PowerLift / Diagramma di carico PowerLift / Диаграмма распределения нагрузки PowerLift

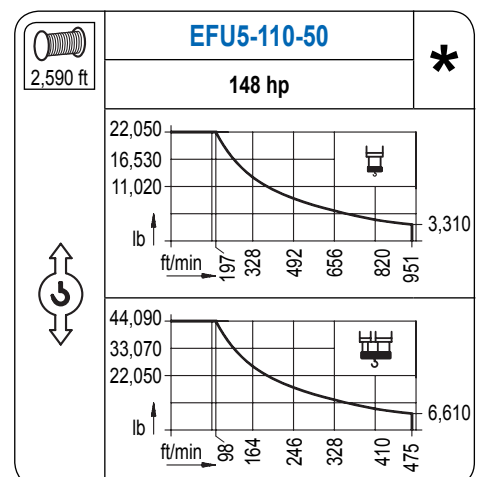
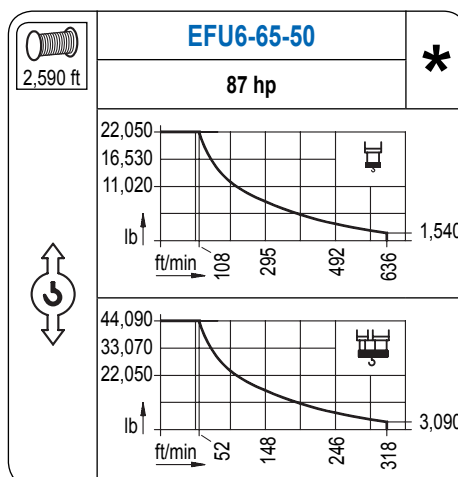
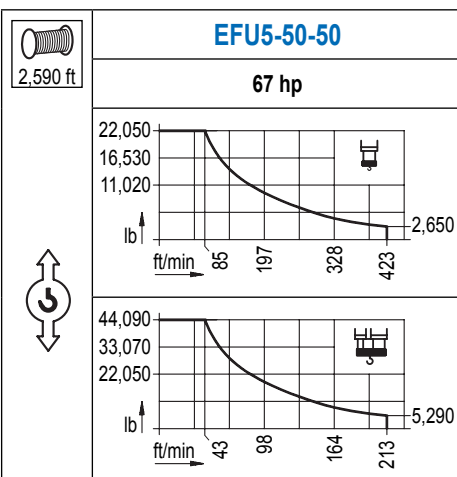
R (ft)	HSC								HSC								
275.6	86.3 44,090	91.9 41,030	98.4 37,940	105.0 35,230	114.8 31,810	124.7 28,920	131.2 27,270	157.5 22,050	169.3 22,050	180.4 20,550	196.9 18,670	213.3 17,110	229.7 15,760	246.1 14,590	262.5 13,580	275.6 12,850	ft lb
262.5			96.8 44,090	105.0 40,190	114.8 36,310	124.7 33,070	131.2 31,200	147.6 27,250	164.0 24,120	177.2 22,050	190.6 22,050	213.3 19,510	229.7 17,990	246.1 16,670	262.5 15,520	ft lb	
246.1			100.7 44,090	105.0 42,040	114.8 38,010	124.7 34,610	131.2 32,650	147.6 28,550	164.0 25,290	184.7 22,050	198.8 22,050	213.3 20,410	229.7 18,830	246.1 17,460	ft lb		
229.7				106.6 44,090	114.8 40,590	124.7 36,990	131.2 34,920	147.6 30,530	164.0 27,070	180.4 24,250	195.9 22,050	211.3 22,050	229.7 20,130	ft lb			
213.3					117.5 44,090	124.7 41,290	131.2 39,000	147.6 34,150	164.0 30,310	180.4 27,180	196.9 24,600	211.0 22,690	ft lb				
196.9						122.7 44,090	131.2 40,920	147.6 35,850	164.0 31,830	180.4 28,570	194.6 26,190	ft lb					
180.4							126.0 44,090	131.2 42,110	147.6 36,910	164.0 32,780	178.1 29,830	ft lb					
164.0								128.9 44,090	131.2 43,250	147.6 37,920	161.7 34,190	ft lb					
147.6									128.3 44,090	131.2 42,990	145.3 38,320	ft lb					
161.2										128.6 44,090	128.9 43,890	ft lb					
114.8										112.5 44,090	ft lb						
98.4										96.1 44,090	ft lb						



Datos válidos hasta 328 ft de ABG. Para alturas mayores consultar / Valid data up to 328 ft HUH. Additional heights on request / Données valables jusqu'à 328 ft HSC. Pour des autres hauteurs, merci de nous consulter / Gültige Daten bis zu 328 ft HH. Bei höheren Hakenhöhen nachfragen / Dati validi fino a 328 ft ASG. Per altezze superiori consultare Comansa / Допустимые данные до 328 фут ВПК. Для более высоких высот консультируйтесь

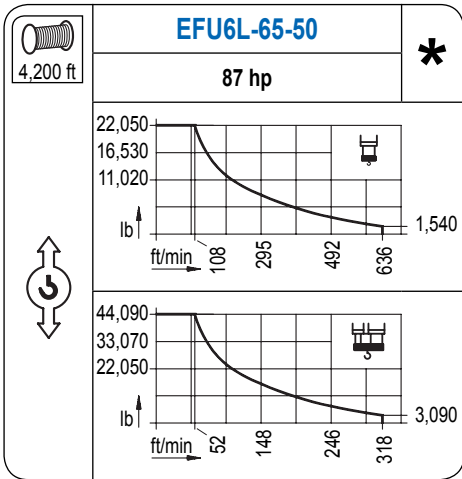
## MECANISMOS

Mechanisms / Mécanismes / Antriebe / Meccanismi / Механизмы

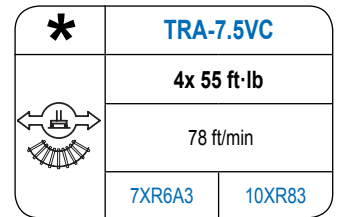
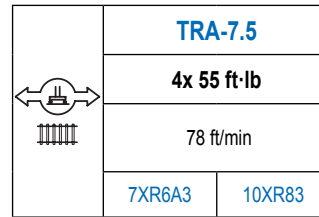
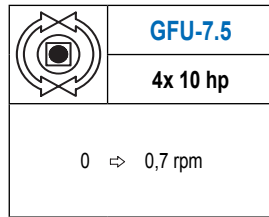
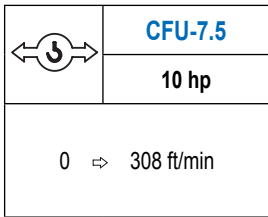
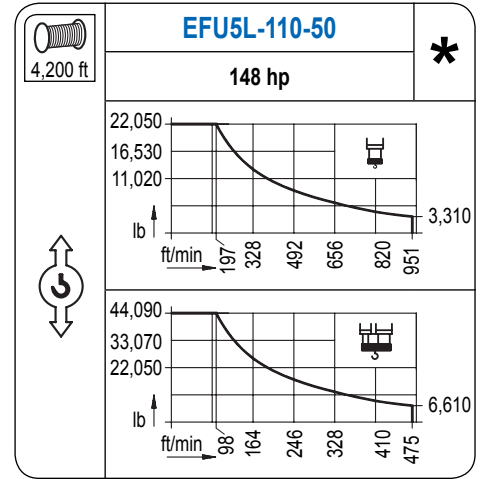


# MECANISMOS

Mechanisms / Mécanismes / Antriebe / Meccanismi / Механизмы



Para mecanismos de alta capacidad de cable consultar cargas. / For mechanisms with high drum capacity, request loads. / Pour des mécanismes avec une grande capacité de câble il faut consulter. / Für Hubmechanismen mit hoher Kabelkapazität, Lastdiagramm anfragen. / Gru con tamburo ad alta capacità di avvolgimento fune, consultare il diagramma di carico. / Проконсультируйтесь о нагрузках при механизмах с большей вместимостью кабеля.



Elevación / Hoist / Levage / Hub / Sollevamento / Тип механизма (подъем)	Carro / Trolley / Chariot / Laufkatze / Carrelo / Грузовая тележка	Giro / Slewing / Rotation / Drehbewegung / Rotazione / Поворот	Traslación / Travel / Translation / Verfahrbewegung / Traslazione / Ход	Tensión de alimentación / Operating voltage / Tension de service / Betriebsspannung / Tensione di alimentazione / Напряжение источника питания	Potencia requerida / Required power / Puissance requise / Benötigte Leistung / Potenza richiesta / требуемая мощность
EFU5-50-50	CFU-7.5	(4x) GFU-7.5	(2x) TRA-7.5 (4x) TRA-7.5	480 V 3ph 50 Hz	80 kVA
EFU6-65-50					95 kVA
EFU6L-65-50					95 kVA
EFU5-110-50					140 kVA
EFU5L-110-50					140 kVA

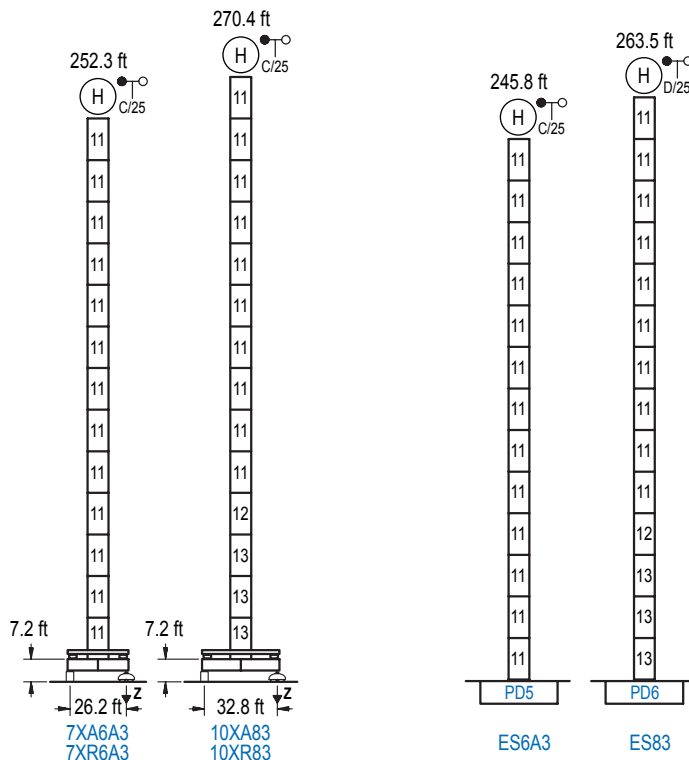
Optional / Optional / En option / Kaufoption / Opzionale / Опционально

**\***

## ALTURAS BAJO GANCHO

Heights under hook / Hauteurs sous crochet / Hakenhöhen / Altezza sotto gancio / Высота под крюком

∅ 8.2 ft



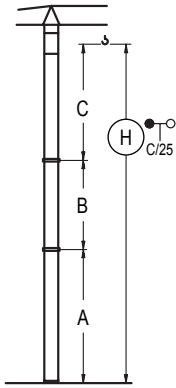
n°	Ref.	∅	h
11	D35	8.2	18.0
12	TD36B	8.2	18.0
13	D36B	8.2	18.0

Z máx.	En servicio / In operation / En service / In Betrieb / In servizio / При работе	7XR6A3 ...355 kip 10XR83....311 kip
	Fuera de servicio / Out of service / Hors service / Ausser Betrieb / Fuori servizio / В стационарном состоянии	7XR6A3 ...421 kip 10XR83....397 kip

Otras zonas de viento o alturas superiores consultar / Other wind zones or additional hook heights on request / Autres zones de vent ou des hauteurs supplémentaires sur demande / Andere Windzonen oder weitere Hakenhöhen auf Anfrage / Per zone con velocità del vento particolari o altezze superiori consultare il fabbricante / При других ветренных зонах о при большой высоте проконсультируйтесь с нами

## GRÚA ARRIOSTRADA

Braced crane / Grue à entretoisement / Abgespannter Kran / Gru ancorata / Нарастиваемый кран

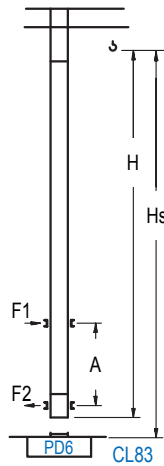


	7XA6A3		10XA83	
A max	205.7	223.8		
A min	79.4	97.4		
B max	-	126.3	-	126.3
B min	-	54.1	-	54.1
C max	172.9	172.9	172.9	172.9
H max	378.6	504.9	396.7	523.0

	ES6A3		ES83	
A max	198.8	216.9		
A min	72.5	90.6		
B max	-	126.3	-	126.3
B min	-	54.1	-	54.1
C max	172.9	172.9	172.9	172.9
H max	371.7	498.0	389.8	516.1

## GRÚA TREPADORA

Internal climbing crane / Grue avec cage de télescopage intérieure / Kran mit klettern im Gebäude / Gru in rampante in cavedio / Кран с самоподъемом



Hook	Hs < 1,310 ft	A max (ft)		A min (ft)	
		A max (ft)	A min (ft)	A max (ft)	A min (ft)
203.4 ft 5x D35 + TD36B + 4x D36A + CLD36A-28		71.9	26.2		
185.4 ft 4x D35 + TD36B + 4x D36A + CLD36A-28		62.7	26.2		
167.3 ft 3x D35 + TD36B + 4x D36A + CLD36A-28		53.8	26.2		

n°	Ref.	Ø (ft)	h (ft)
11	D35	8.2	18.0
12	TD36B	8.2	18.0
22	D36A	8.2	18.0
19	CLD36A-28	8.2	12.5

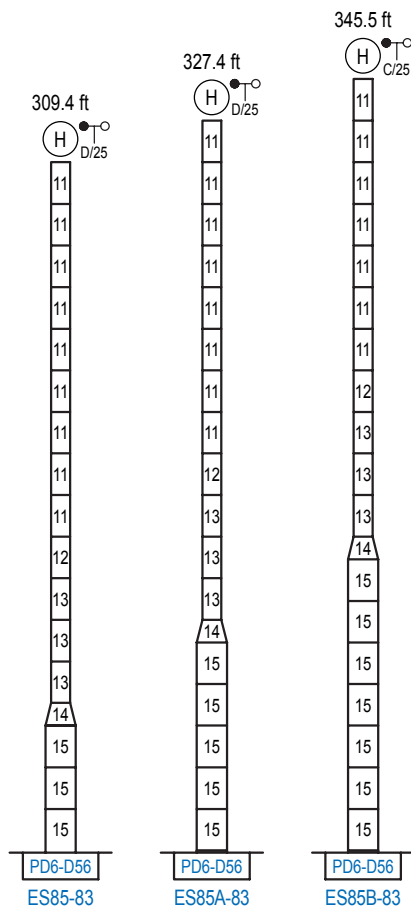
Otras zonas de viento, alturas superiores, arriostramientos o trepado interno consultar / Other wind zones, additional hook heights, tie frames or internal climbing on request / Autres zones de vent, des hauteurs supplémentaires, entretoisements ou grues avec cage de télescopage intérieure, sur demande / Andere Windzonen, weitere Hakenhöhen, Abspannungen zum Gebäude oder Klettern im Gebäude auf Anfrage / Per zone con velocità del vento particolari, altezze superiori, ancoraggi o rampante in cavedio, consultare il fabbricante / При других ветренных зонах, при большой высоте, привязках к зданию или наращивании крана внутри здания проконсультируйтесь с нами

## ALTURAS ESPECIALES

Special heights / Spéciaux hauteurs / Extra Höhen / Conformazioni raccordate per altezze speciali / Для специальной высоты

Ø 13.1 ft

2100 Series



n°	Ref.	Ø (ft)	h (ft)
11	D35	8.2	18.0
12	TD36B	8.2	18.0
13	D36B	8.2	18.0
14	TD56D36	13.1	9.8
15	D56	13.1	18.0

Otras zonas de viento o alturas superiores consultar / Other wind zones or additional hook heights on request / Autres zones de vent ou des hauteurs supplémentaires sur demande / Andere Windzonen oder weitere Hakenhöhen auf Anfrage / Per zone con velocità del vento particolari o altezze superiori consultare il fabbricante / При других ветренных зонах о при большой высоте проконсультируйтесь с нами