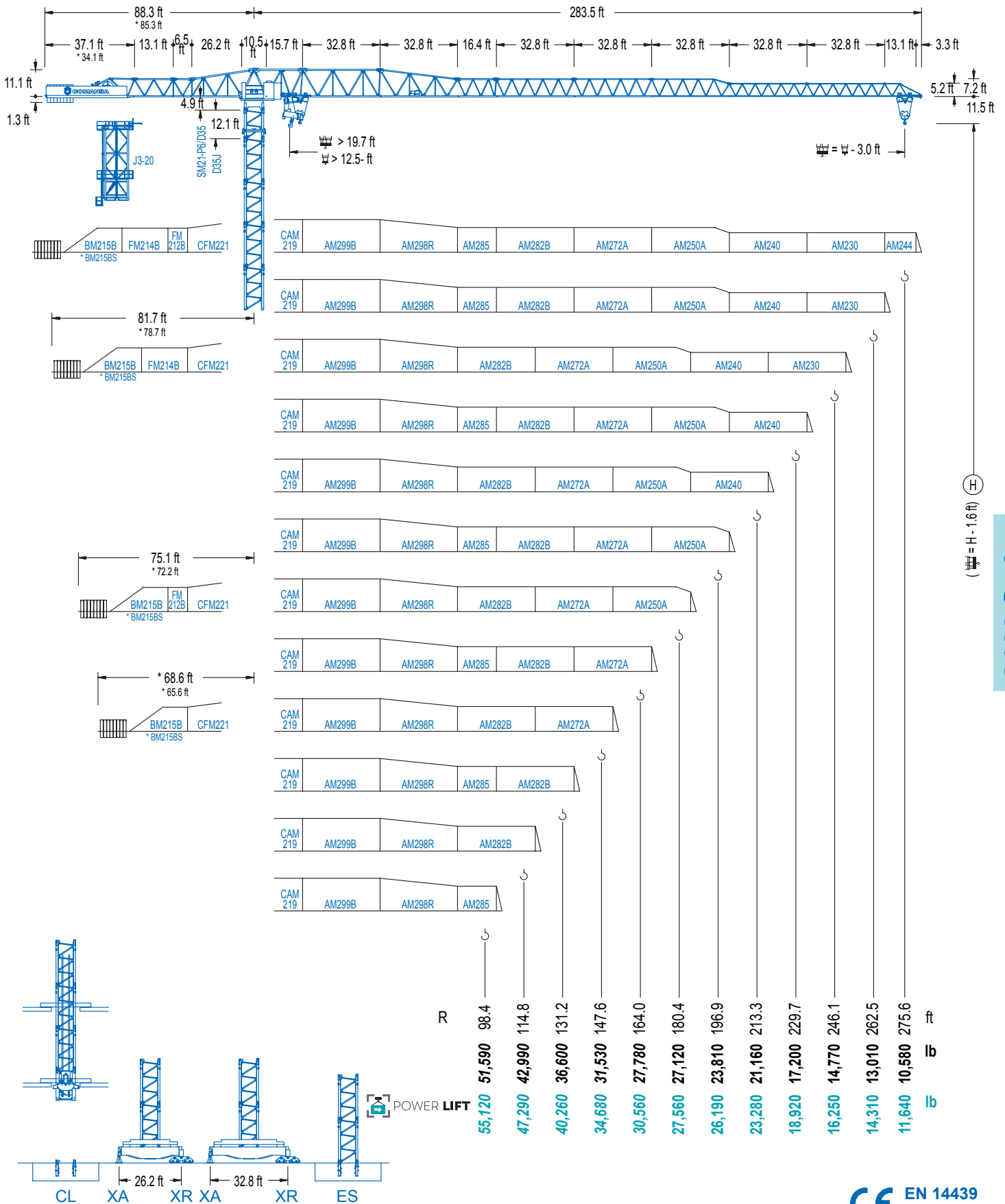


2100 Series

21 LC 660

55,120 lb



2100 Series

DIAGRAMA DE CARGAS

Load chart / Diagramme de charges / Lastdiagramm / Diagramma di carico / Диаграмма распределения нагрузки

| R (ft) | 2,360 ft | | | | | | 2,360 ft | | | | | | | | | | |
|--------|----------|--------|--------|--------|--------|--------|----------|--------|--------|--------|--------|--------|--------|--------|--------|--------|----|
| 275.6 | 62.7 | 75.5 | 82.0 | 91.9 | 98.4 | 110.2 | 122.0 | 147.6 | 164.0 | 180.4 | 196.9 | 213.3 | 229.7 | 246.1 | 262.5 | 275.6 | ft |
| | 55,120 | 44,050 | 39,790 | 34,610 | 31,770 | 27,560 | 27,560 | 22,200 | 19,670 | 17,610 | 15,900 | 14,460 | 13,230 | 12,170 | 11,240 | 10,580 | lb |
| 262.5 | 69.9 | 75.5 | 82.0 | 91.9 | 98.4 | 123.4 | 137.5 | 147.6 | 164.0 | 180.4 | 196.9 | 213.3 | 229.7 | 246.1 | 262.5 | ft | |
| | 55,120 | 50,380 | 45,570 | 39,750 | 36,530 | 27,560 | 27,560 | 25,400 | 22,530 | 20,190 | 18,280 | 16,640 | 15,260 | 14,070 | 13,010 | lb | |
| 246.1 | | 72.8 | 82.0 | 91.9 | 98.4 | 114.8 | 128.3 | 143.0 | 164.0 | 180.4 | 196.9 | 213.3 | 229.7 | 246.1 | ft | | |
| | | 55,120 | 47,730 | 41,640 | 38,290 | 31,700 | 27,560 | 27,560 | 23,610 | 21,190 | 19,180 | 17,460 | 16,030 | 14,770 | lb | | |
| 229.7 | | 76.8 | 82.0 | 91.9 | 98.4 | 114.8 | 136.2 | 151.9 | 164.0 | 180.4 | 196.9 | 213.3 | 229.7 | ft | | | |
| | | 55,120 | 51,010 | 44,580 | 41,030 | 34,020 | 27,560 | 27,560 | 25,260 | 22,690 | 20,550 | 18,740 | 17,200 | lb | | | |
| 213.3 | | | 85.0 | 91.9 | 98.4 | 114.8 | 131.2 | 150.6 | 169.0 | 180.4 | 196.9 | 213.3 | ft | | | | |
| | | | 55,120 | 50,220 | 46,270 | 38,490 | 32,720 | 27,560 | 27,560 | 25,570 | 23,170 | 21,160 | lb | | | | |
| 196.9 | | | 86.6 | 91.9 | 98.4 | 114.8 | 131.2 | 154.2 | 172.9 | 180.4 | 196.9 | ft | | | | | |
| | | | 55,120 | 51,500 | 47,470 | 39,480 | 33,600 | 27,560 | 27,560 | 26,260 | 23,810 | lb | | | | | |
| 180.4 | | | 88.9 | 98.4 | 114.8 | 131.2 | 158.1 | 177.8 | 180.4 | ft | | | | | | | |
| | | | 55,120 | 48,940 | 40,740 | 34,680 | 27,560 | 27,560 | 27,120 | lb | | | | | | | |
| 164.0 | | | 91.2 | 98.4 | 114.8 | 131.2 | 147.6 | 161.1 | ft | | | | | | | | |
| | | | 55,120 | 50,380 | 41,950 | 35,740 | 30,950 | 27,780 | lb | | | | | | | | |
| 147.6 | | | 90.6 | 98.4 | 114.8 | 131.2 | 144.7 | ft | | | | | | | | | |
| | | | 55,120 | 50,070 | 41,690 | 35,520 | 31,530 | lb | | | | | | | | | |
| 131.2 | | | 90.9 | 98.4 | 114.8 | 128.3 | ft | | | | | | | | | | |
| | | | 55,120 | 50,180 | 41,800 | 36,600 | lb | | | | | | | | | | |
| 114.8 | | | 90.6 | 98.4 | 111.9 | ft | | | | | | | | | | | |
| | | | 55,120 | 50,040 | 42,990 | lb | | | | | | | | | | | |
| 98.4 | | | 90.2 | 95.5 | ft | | | | | | | | | | | | |
| | | | 55,120 | 51,590 | lb | | | | | | | | | | | | |

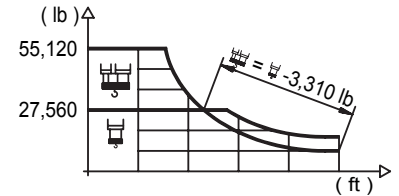
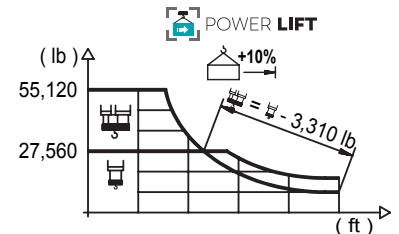


DIAGRAMA DE CARGAS POWERLIFT

Load chart PowerLift / Diagramme de charges PowerLift / Lastdiagramm PowerLift / Diagramma di carico PowerLift / Диаграмма распределения нагрузки PowerLift

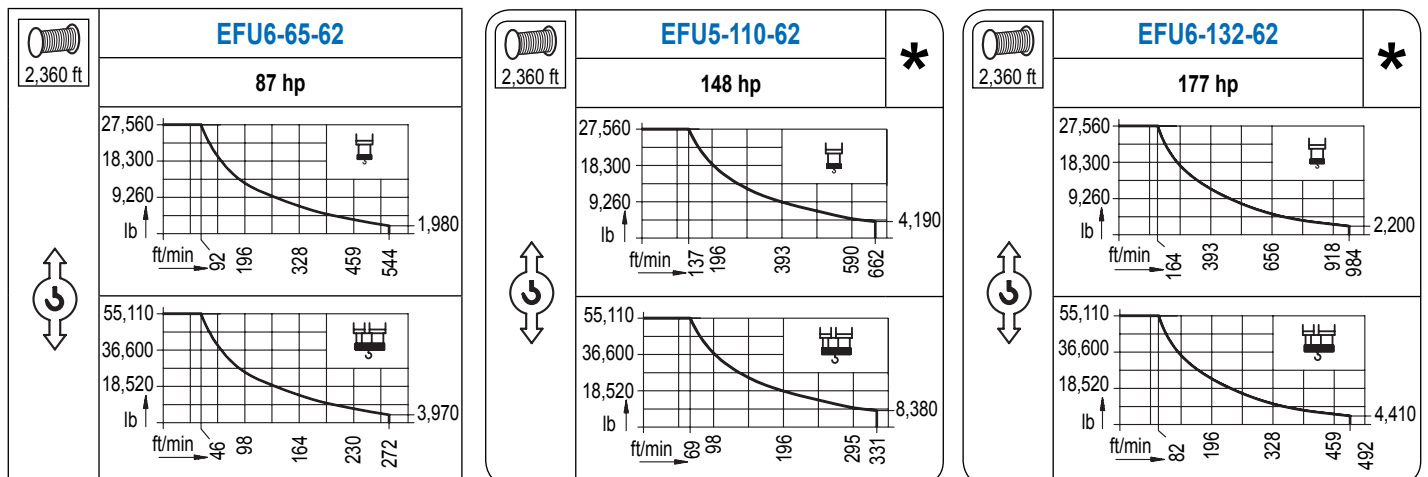
| R (ft) | 2,360 ft | | | | | | 2,360 ft | | | | | | | | | | |
|--------|----------|--------|--------|--------|--------|--------|----------|--------|--------|--------|--------|--------|--------|--------|--------|--------|----|
| 275.6 | 67.3 | 75.5 | 82.0 | 91.9 | 98.4 | 118.8 | 131.9 | 147.6 | 164.0 | 180.4 | 196.9 | 213.3 | 229.7 | 246.1 | 262.5 | 275.6 | ft |
| | 55,120 | 48,080 | 43,470 | 37,880 | 34,790 | 27,560 | 27,560 | 24,210 | 21,470 | 19,250 | 17,390 | 15,830 | 14,510 | 13,360 | 12,350 | 11,640 | lb |
| 262.5 | | 75.5 | 82.0 | 91.9 | 98.4 | 114.8 | 133.5 | 148.6 | 164.0 | 180.4 | 196.9 | 213.3 | 229.7 | 246.1 | 262.5 | ft | |
| | | 55,120 | 49,890 | 43,560 | 40,080 | 33,200 | 27,560 | 27,560 | 24,630 | 22,110 | 20,020 | 18,250 | 16,750 | 15,430 | 14,310 | lb | |
| 246.1 | | 78.4 | 82.0 | 91.9 | 98.4 | 114.8 | 138.8 | 154.9 | 164.0 | 180.4 | 196.9 | 213.3 | 229.7 | 246.1 | ft | | |
| | | 55,120 | 52,290 | 45,700 | 42,060 | 34,900 | 27,560 | 27,560 | 25,860 | 23,210 | 21,030 | 19,180 | 17,610 | 16,250 | lb | | |
| 229.7 | | | 83.0 | 91.9 | 98.4 | 114.8 | 131.2 | 147.6 | 164.7 | 180.4 | 196.9 | 213.3 | 229.7 | ft | | | |
| | | | 55,120 | 48,960 | 45,110 | 37,480 | 31,860 | 27,560 | 27,560 | 24,890 | 22,550 | 20,590 | 18,920 | lb | | | |
| 213.3 | | | 92.2 | 98.4 | 114.8 | 131.2 | 147.6 | 163.7 | 183.4 | 196.9 | 213.3 | ft | | | | | |
| | | | 55,120 | 50,930 | 42,440 | 36,160 | 31,330 | 27,560 | 27,560 | 25,490 | 23,280 | lb | | | | | |
| 196.9 | | | 94.2 | 98.4 | 114.8 | 131.2 | 147.6 | 167.3 | 188.0 | 196.9 | ft | | | | | | |
| | | | 55,120 | 52,290 | 43,580 | 37,170 | 32,210 | 27,560 | 27,560 | 26,190 | lb | | | | | | |
| 180.4 | | | 95.8 | 114.8 | 131.2 | 147.6 | 177.5 | 180.4 | ft | | | | | | | | |
| | | | 55,120 | 44,490 | 37,940 | 32,890 | 26,190 | 27,560 | lb | | | | | | | | |
| 164.0 | | | 98.4 | 114.8 | 131.2 | 147.6 | 161.1 | ft | | | | | | | | | |
| | | | 55,120 | 45,900 | 39,180 | 33,990 | 30,560 | lb | | | | | | | | | |
| 147.6 | | | 95.1 | 114.8 | 131.2 | 144.7 | ft | | | | | | | | | | |
| | | | 55,120 | 45,700 | 39,000 | 34,680 | lb | | | | | | | | | | |
| 131.2 | | | 98.4 | 114.8 | 128.3 | ft | | | | | | | | | | | |
| | | | 55,120 | 45,900 | 40,260 | lb | | | | | | | | | | | |
| 114.8 | | | 98.1 | 111.9 | ft | | | | | | | | | | | | |
| | | | 55,120 | 47,290 | lb | | | | | | | | | | | | |
| 98.4 | | | 95.5 | ft | | | | | | | | | | | | | |
| | | | 55,120 | lb | | | | | | | | | | | | | |



Datos válidos hasta 328 ft de ABG. Para alturas mayores consultar / Valid data up to 328 ft HUH. Additional heights on request / Données valables jusqu'à 328 ft HSC. Pour des autres hauteurs, merci de nous consulter / Gültige Daten bis zu 328 ft HH. Bei höheren Hakenhöhen nachfragen / Dati validi fino a 328 ft ASG. Per altezze superiori consultare Comansa / Допустимые данные до 328 фут ВПК. Для более высоких высот консультируйтесь

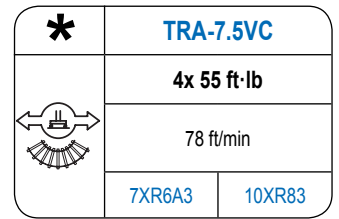
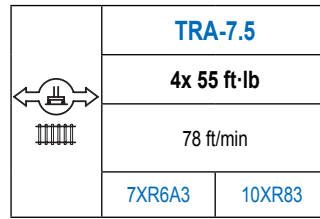
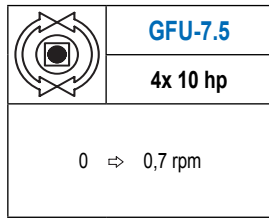
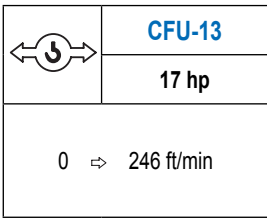
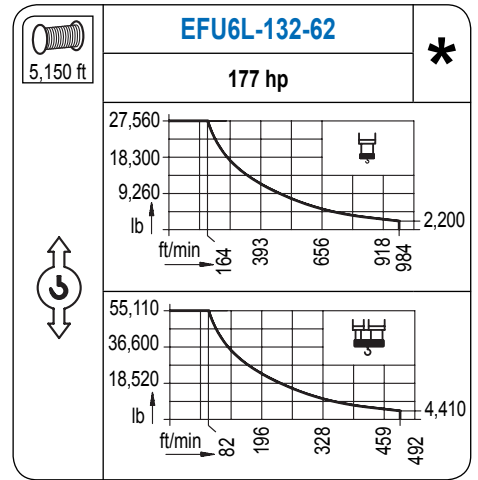
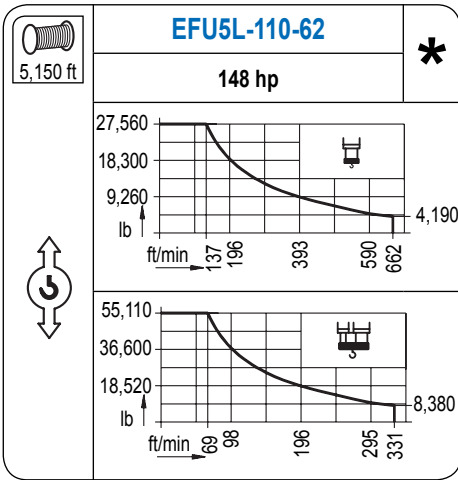
MECANISMOS

Mechanisms / Mécanismes / Antriebe / Meccanismi / Механизмы



MECANISMOS

Mechanisms / Mécanismes / Antriebe / Meccanismi / Механизмы



| Elevación / Hoist / Levage / Hub / Sollevamento / Тип механизма (подъем) | Carro / Trolley / Chariot / Laufkatze / Carrelo / Грузовая тележка | Giro / Slewing / Rotation / Drehbewegung / Rotazione / Поворот | Traslación / Travel / Translation / Verfahrbewegung / Traslazione / Ход | Tensión de alimentación / Operating voltage / Tension de service / Betriebsspannung / Tensione di alimentazione / Напряжение источника питания | Potencia requerida / Required power / Puissance requise / Benötigte Leistung / Potenza richiesta / требуемая мощность |
|--|--|--|---|--|---|
| EFU6-65-62 | CFU-13 | (4x) GFU-7.5 | (4x) TRA-7.5 | 480 V 3ph 60 Hz | 99 kVA |
| EFU5-110-62 | | | | | 144 kVA |
| EFU5L-110-62 | | | | | 144 kVA |
| EFU6-132-62 | | | | | 166 kVA |
| EFU6L-132-62 | | | | | 166 kVA |

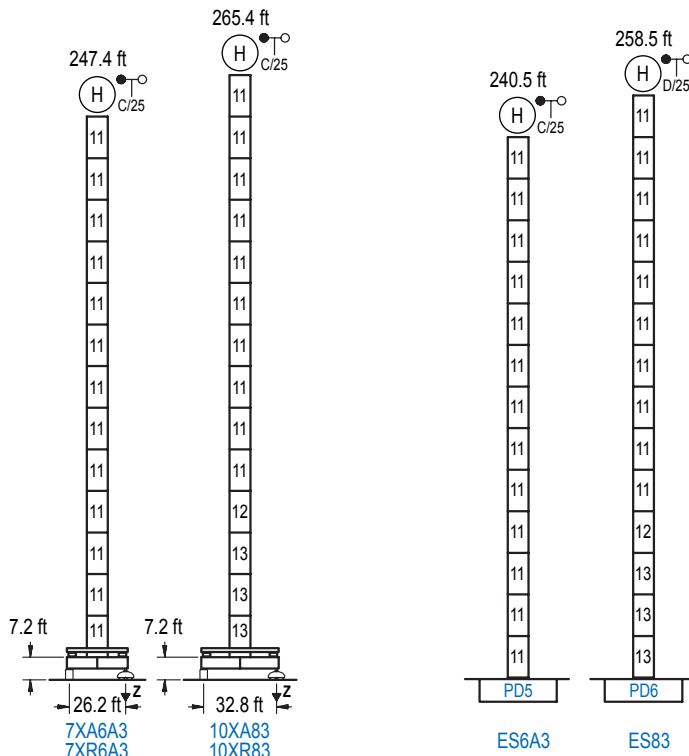
Optional /
Optional / En
option / Kaufoption
/ Opzionale /
Опционально

*

ALTURAS BAJO GANCHO

Heights under hook / Hauteurs sous crochet / Hakenhöhen / Altezza sotto gancio / Высота под крюком

∅ 8.2 ft



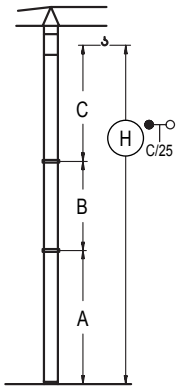
| n° | Ref. | ∅ | h |
|----|-------|-----|------|
| 11 | D35 | 8.2 | 18.0 |
| 12 | TD36B | 8.2 | 18.0 |
| 13 | D36B | 8.2 | 18.0 |

| Z máx. | En servicio / In operation / En service / In Betrieb / In servizio / При работе | 7XR6A3 ...365 kip 10XR83 ...304 kip |
|--------|--|--|
| | Fuera de servicio / Out of service / Hors service / Ausser Betrieb / Fuori servizio / В стационарном состоянии | 7XR6A3 ...427 kip 10XR83 ...405 kip |

Otras zonas de viento o alturas superiores consultar / Other wind zones or additional hook heights on request / Autres zones de vent ou des hauteurs supplémentaires sur demande / Andere Windzonen oder weitere Hakenhöhen auf Anfrage / Per zone con velocità del vento particolari o altezze superiori consultare il fabbricante / При других ветренных зонах or при большой высоте проконсультируйтесь с нами

GRÚA ARRIOSTRADA

Braced crane / Grue à entretoisement / Abgespannter Kran / Gru ancorata / Нарастиваемый кран

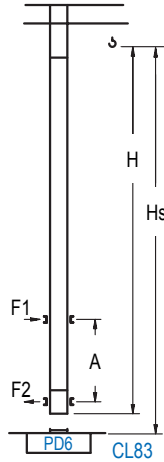


| | 7XA6A3 | | 10XA83 | |
|-------|--------|-------|--------|-------|
| A max | 205.7 | | 223.8 | |
| A min | 79.4 | | 97.4 | |
| B max | - | 126.3 | - | 126.3 |
| B min | - | 54.1 | - | 54.1 |
| C max | 168.0 | 168.0 | 168.0 | 168.0 |
| H max | 373.7 | 500.0 | 391.7 | 518.0 |

| | ES6A3 | | ES83 | |
|-------|-------|-------|-------|-------|
| A max | 198.8 | | 216.9 | |
| A min | 72.5 | | 90.2 | |
| B max | - | 126.3 | - | 126.3 |
| B min | - | 54.1 | - | 54.1 |
| C max | 168.0 | 168.0 | 168.0 | 168.0 |
| H max | 366.8 | 493.1 | 384.8 | 511.2 |

GRÚA TREPADORA

Internal climbing crane / Grue avec cage de télescopage intérieure / Kran mit klettern im Gebäude / Gru in rampante in cavedio / Кран с самоподъемом



| H | Hs < 1,310- ft | |
|--|----------------|------------|
| | A max (ft) | A min (ft) |
| 198.5 ft 5x D35 + TD36B + 4x D36A + CLD36A-28 | 71.9 | 26.2 |
| 180.4 ft 4x D35 + TD36B + 4x D36A + CLD36A-28 | 62.7 | 26.2 |
| 162.4 ft 3x D35 + TD36B + 4x D36A + CLD36A-28 | 53.8 | 26.2 |

| n° | Ref. | h | h |
|----|-----------|-----|------|
| 11 | D35 | 8.2 | 18.0 |
| 12 | TD36B | 8.2 | 18.0 |
| 22 | D36A | 8.2 | 18.0 |
| 19 | CLD36A-28 | 8.2 | 12.5 |

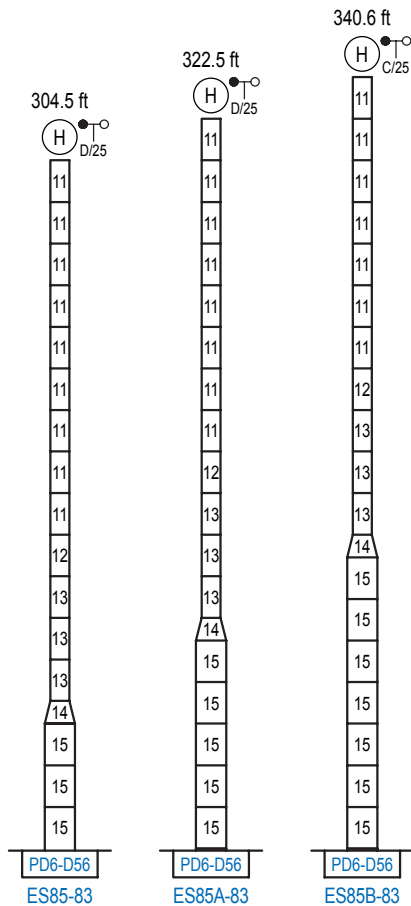
Otras zonas de viento, alturas superiores, arriostramientos o trepado interno consultar / Other wind zones, additional hook heights, tie frames or internal climbing on request / Autres zones de vent, des hauteurs supplémentaires, entretoisements ou grues avec cage de télescopage intérieure, sur demande / Andere Windzonen, weitere Hakenhöhen, Abspannungen zum Gebäude oder Klettern im Gebäude auf Anfrage / Per zone con velocità del vento particolari, altezze superiori, ancoraggi o rampante in cavedio, consultare il fabbricante / При других ветренных зонах, при большой высоте, привязках к зданию или наращивании крана внутри здания проконсультируйтесь с нами

ALTURAS ESPECIALES

Special heights / Spéciaux hauteurs / Extra Höhen / Conformazioni raccordate per altezze speciali / Для специальной высоты

13.1 ft

2100 Series



| n° | Ref. | h | h |
|----|---------|------|------|
| 11 | D35 | 8.2 | 18.0 |
| 12 | TD36B | 8.2 | 18.0 |
| 13 | D36B | 8.2 | 18.0 |
| 14 | TD56D36 | 13.1 | 9.8 |
| 15 | D56 | 13.1 | 18.0 |

Otras zonas de viento o alturas superiores consultar / Other wind zones or additional hook heights on request / Autres zones de vent ou des hauteurs supplémentaires sur demande / Andere Windzonen oder weitere Hakenhöhen auf Anfrage / Per zone con velocità del vento particolari o altezze superiori consultare il fabbricante / При других ветренных зонах или при большой высоте проконсультируйтесь с нами