

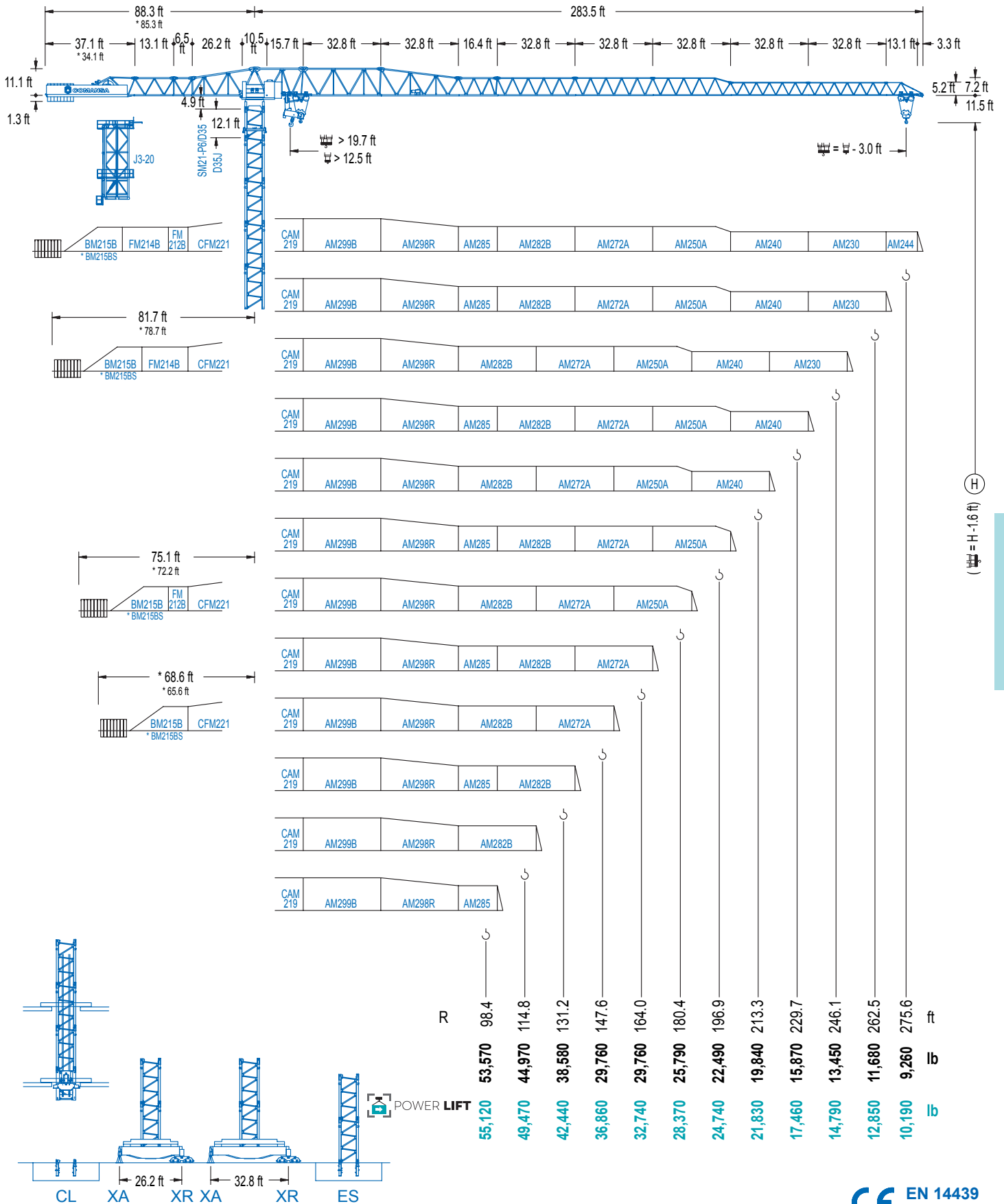


COMANSA

2100 Series

21 LC 660

110,230 lb



2100 Series

CE EN 14439 (C/25)

DIAGRAMA DE CARGAS

Load chart / Diagramme de charges / Lastdiagramm / Diagramma di carico / Диаграмма распределения нагрузки

R (ft)																				
275.6	33.8 110,230	49.2 68,560	58.7 55,120	64.3 55,120	82.0 41,580	91.9 36,460	98.4 33,640	114.8 28,060	131.2 23,940	147.6 20,790	164.0 18,280	180.4 16,230	196.9 14,530	213.3 13,100	229.7 11,880	246.1 10,820	262.5 9,920	275.6 9,260	ft lb	
262.5	37.4 110,230	49.2 78,810	66.3 55,120	72.2 55,120	82.0 47,510	91.9 41,710	98.4 38,540	114.8 32,230	131.2 27,560	147.6 23,990	164.0 21,140	180.4 18,830	196.9 16,910	213.3 15,300	229.7 13,910	246.1 12,720	262.5 11,680	ft lb		
246.1	39.0 110,230	49.2 82,720	68.6 55,120	75.1 55,120	82.0 49,780	91.9 43,720	98.4 40,390	114.8 33,820	131.2 28,950	147.6 25,200	164.0 22,240	180.4 19,820	196.9 17,810	213.3 16,140	229.7 14,680	246.1 13,450	ft lb			
229.7	41.3 110,230	49.2 88,650	65.6 62,350	72.5 55,120	79.7 55,120	91.9 46,780	98.4 43,230	114.8 36,240	131.2 31,060	147.6 27,070	164.0 23,900	180.4 21,340	196.9 19,200	213.3 17,420	229.7 15,870	ft lb				
213.3	45.3 110,230	65.6 70,590	75.5 59,550	80.4 55,120	88.3 55,120	98.4 48,680	114.8 40,850	131.2 35,080	147.6 30,620	164.0 27,090	180.4 24,230	196.9 21,850	ft lb							
196.9	46.3 110,230	65.6 72,550	75.5 61,240	82.3 55,120	90.2 55,120	98.4 50,000	114.8 41,980	131.2 36,050	147.6 31,480	164.0 27,870	180.4 24,930	196.9 22,490	ft lb							
180.4	47.6 110,230	65.6 74,960	75.5 63,320	84.6 55,120	92.8 55,120	98.4 51,630	114.8 43,360	131.2 37,260	147.6 32,560	164.0 28,840	180.4 25,790	ft lb								
164.0	48.9 110,230	65.6 77,270	75.5 65,300	86.6 55,120	95.5 55,120	98.4 53,220	114.8 44,730	131.2 38,450	147.6 33,600	164.0 29,760	ft lb									
147.6	48.6 110,230	65.6 76,940	75.5 64,990	86.3 55,120	95.1 55,120	98.4 53,090	114.8 44,600	131.2 38,340	147.6 29,760	ft lb										
131.2	48.9 110,230	65.6 77,250	75.5 65,280	86.6 55,120	95.8 55,120	98.4 53,420	114.8 44,890	131.2 38,580	ft lb											
114.8	48.9 110,230	65.6 77,140	75.5 65,190	86.6 55,120	95.8 55,120	98.4 53,510	114.8 44,970	ft lb												
98.4	48.6 110,230	65.6 76,850	75.5 64,950	86.3 55,120	96.1 55,120	98.4 53,570	ft lb													

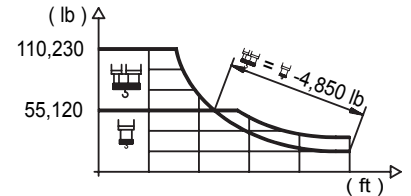
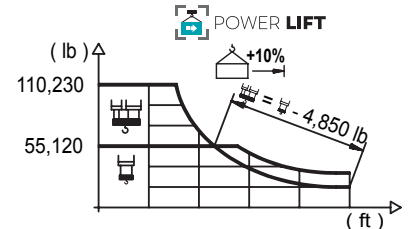


DIAGRAMA DE CARGAS POWERLIFT

Load chart PowerLift / Diagramme de charges PowerLift / Lastdiagramm PowerLift / Diagramma di carico PowerLift / Диаграмма распределения нагрузки PowerLift

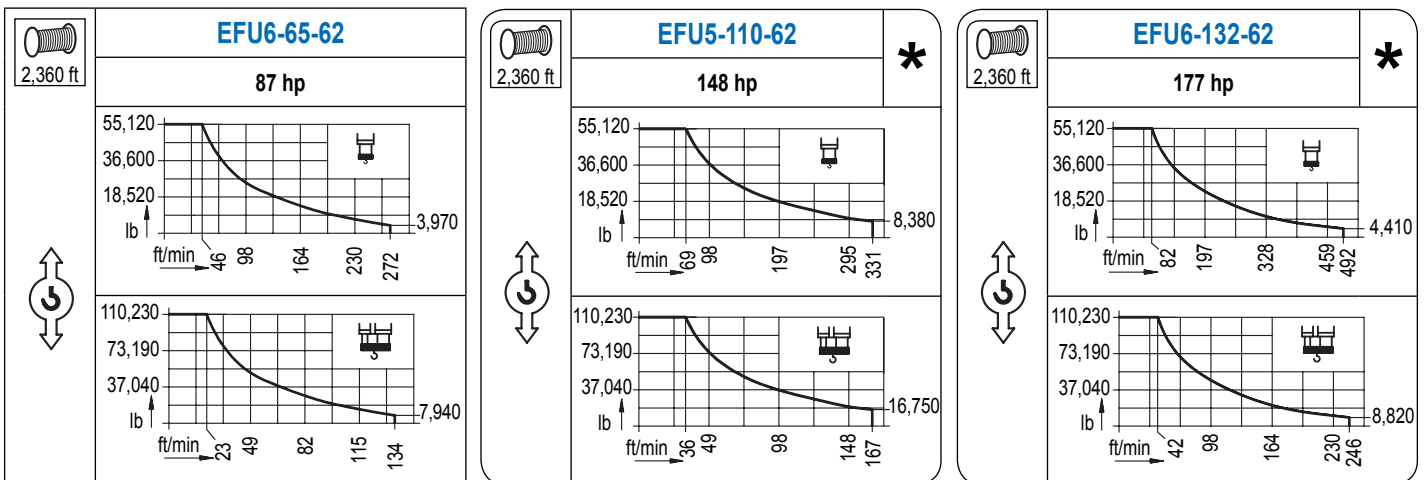
R (ft)																				
275.6	35.8 110,230	49.2 74,180	62.3 55,120	68.6 55,120	82.0 44,840	91.9 39,350	98.4 36,330	114.8 30,360	131.2 25,950	147.6 22,530	164.0 19,840	180.4 17,660	196.9 15,830	213.3 14,310	229.7 13,010	246.1 11,860	262.5 10,890	275.6 10,190	ft lb	
262.5	40.0 110,230	49.2 85,560	70.5 55,120	77.1 55,120	82.0 51,430	91.9 45,170	98.4 41,760	114.8 34,960	131.2 29,960	147.6 26,100	164.0 23,040	180.4 20,550	196.9 18,470	213.3 16,730	229.7 15,260	246.1 13,980	262.5 12,850	ft lb		
246.1	41.7 110,230	49.2 89,990	65.6 63,340	73.5 55,120	80.7 55,120	91.9 47,470	98.4 43,870	114.8 36,770	131.2 31,530	147.6 27,470	164.0 24,270	180.4 21,670	196.9 19,510	213.3 17,680	229.7 16,140	246.1 14,790	ft lb			
229.7	44.3 110,230	49.2 96,650	65.6 68,170	78.1 55,120	85.6 55,120	91.9 50,900	98.4 47,070	114.8 39,480	131.2 33,880	147.6 29,560	164.0 26,150	180.4 23,370	196.9 21,050	213.3 19,110	229.7 17,460	ft lb				
213.3	48.9 110,230	65.6 77,340	75.5 65,340	86.9 55,120	95.1 55,120	98.4 53,110	114.8 44,620	131.2 38,360	147.6 33,530	164.0 29,700	180.4 26,590	196.9 24,010	213.3 21,830	ft lb						
196.9	49.9 110,230	65.6 79,590	75.5 67,280	82.0 60,820	88.9 55,120	97.8 55,120	114.8 45,900	131.2 39,460	147.6 34,520	164.0 30,580	180.4 27,380	196.9 24,740	ft lb							
180.4	51.5 110,230	65.6 82,320	75.5 69,620	82.0 62,990	91.5 55,120	100.7 55,120	114.8 47,490	131.2 40,850	147.6 35,740	164.0 31,680	180.4 28,370	ft lb								
164.0	52.8 110,230	65.6 84,970	75.5 71,910	82.0 65,060	94.2 55,120	103.3 55,120	114.8 49,030	131.2 42,200	147.6 36,930	164.0 32,740	ft lb									
147.6	52.5 110,230	65.6 84,660	75.5 71,650	82.0 64,840	93.8 55,120	103.3 55,120	114.8 48,960	131.2 42,130	147.6 36,860	ft lb										
131.2	52.8 110,230	65.6 85,100	75.5 72,020	82.0 65,170	94.2 55,120	104.0 55,120	114.8 49,320	131.2 42,440	ft lb											
114.8	52.8 110,230	65.6 85,080	75.5 72,000	82.0 65,170	94.2 55,120	104.3 55,120	114.8 49,470	ft lb												
98.4	49.9 110,230	65.6 79,170	75.5 66,930	82.0 60,490	88.6 55,120	98.4 55,120	ft lb													



Datos válidos hasta 328 ft de ABG. Para alturas mayores consultar / Valid data up to 328 ft HUH. Additional heights on request / Données valables jusqu'à 328 ft HSC. Pour des autres hauteurs, merci de nous consulter / Gültige Daten bis zu 328 ft HH. Bei höheren Hakenhöhen nachfragen / Dati validi fino a 328 ft ASG. Per altezze superiori consultare Comansa / Допустимые данные до 328 фут ВПК. Для более высоких высот консультируйтесь

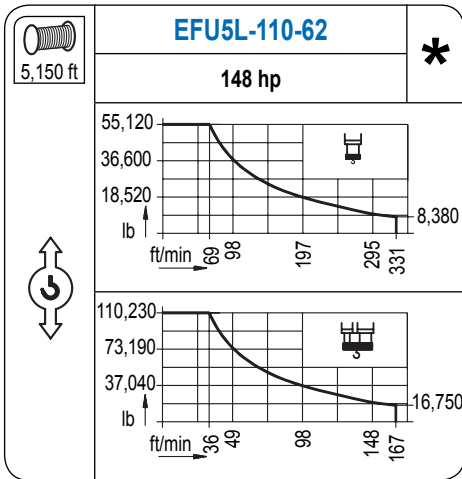
MECANISMOS

Mechanisms / Mécanismes / Antriebe / Meccanismi / Механизмы

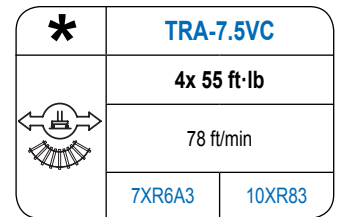
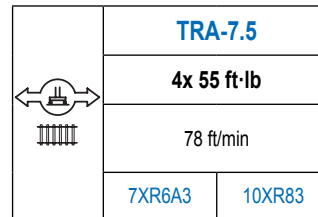
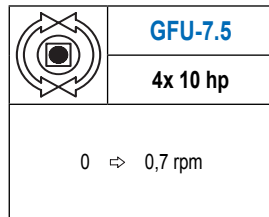
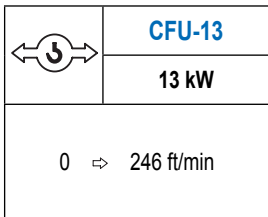
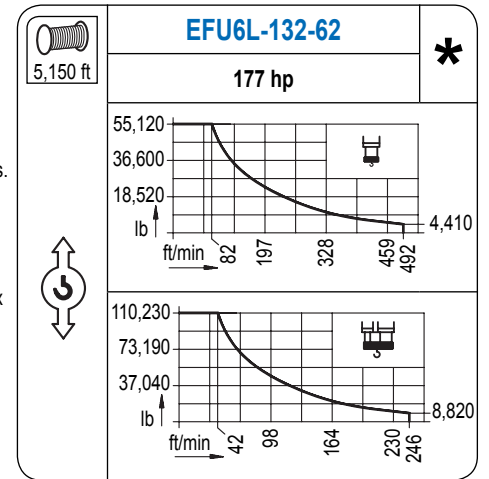


MECANISMOS

Mechanisms / Mécanismes / Antriebe / Meccanismi / Механизмы



Para mecanismos de alta capacidad de cable consultar cargas.
/ For mechanisms with high drum capacity, request loads.
/ Pour des mécanismes avec une grande capacité de câble il faut consulter.
/ Für Hubmechanismen mit hoher Kabelkapazität, Lastdiagramm anfragen.
/ Gru con tamburo ad alta capacità di avvolgimento fune, consultare il diagramma di carico.
/ Проконсультируйтесь о нагрузках при механизмах с большей вместимостью кабеля.



Elevación / Hoist / Levage / Hub / Sollevamento / Тип механизма (подъем)	Carro / Trolley / Chariot / Laufkatze / Carrolo / Грузовая тележка	Giro / Slewing / Rotation / Drehbewegung / Rotazione / Поворот	Traslación / Travel / Translation / Verfahrbewegung / Traslazione / Ход	Tensión de alimentación / Operating voltage / Tension de service / Betriebsspannung / Tensione di alimentazione / Напряжение источника питания	Potencia requerida / Required power / Puissance requise / Benötigte Leistung / Potenza richiesta / требуемая мощность
EFU6-65-62	CFU-13	(4x) GFU-7.5	(4x) TRA-7.5	480 V 3ph 60 Hz	99 kVA
EFU5-110-62					144 kVA
EFU5L-110-62					144 kVA
EFU6-132-62					166 kVA
EFU6L-132-62					166 kVA

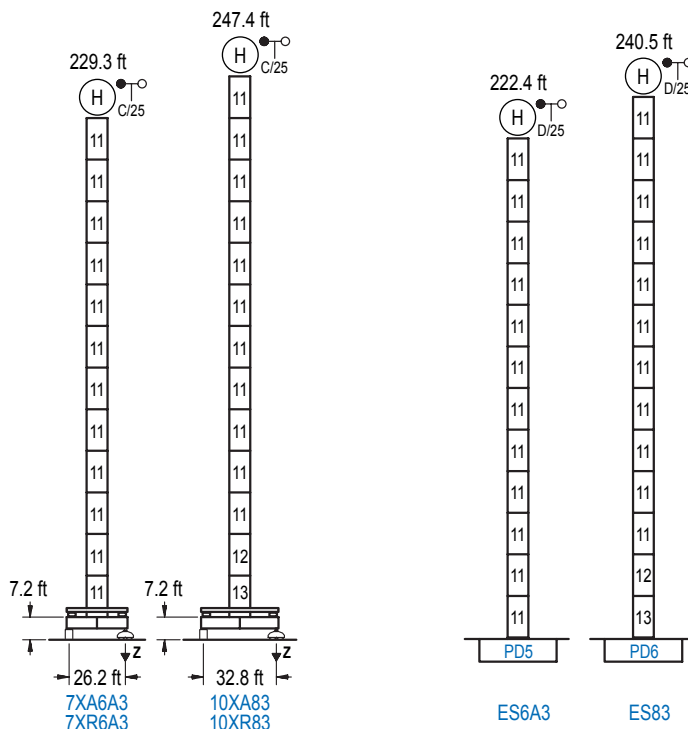
Optional /
Optional / En
option / Kaufoption
/ Opzionale /
Опционально

*

ALTURAS BAJO GANCHO

Heights under hook / Hauteurs sous crochet / Hakenhöhen / Altezza sotto gancio / Высота под крюком

∅ 2,5 m



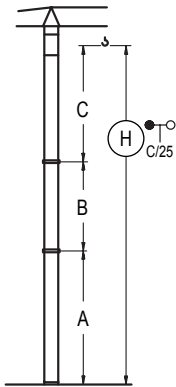
n°	Ref.	∅	h
11	D35	8.2	18.0
12	TD36B	8.2	18.0
13	D36B	8.2	18.0

Z máx.	En servicio / In operation / En service / In Betrieb / In servizio / При работе	7XR6A3...405 kip 10XR83...304 kip
	Fuera de servicio / Out of service / Hors service / Ausser Betrieb / Fuori servizio / В стационарном состоянии	7XR6A3...427 kip 10XR83...405 kip

Otras zonas de viento o alturas superiores consultar / Other wind zones or additional hook heights on request / Autres zones de vent ou des hauteurs supplémentaires sur demande / Andere Windzonen oder weitere Hakenhöhen auf Anfrage / Per zone con velocità del vento particolari o altezze superiori consultare il fabbricante / При других ветренных зонах о при большой высоте проконсультируйтесь с нами

GRÚA ARRIOSTRADA

Braced crane / Grue à entretoisement / Abgespannter Kran / Gru ancorata / Нарастиваемый кран

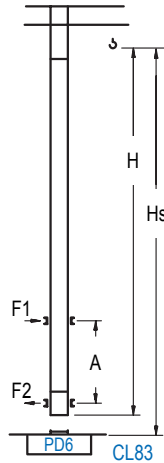


	7XA6A3		10XA83	
A max	187.7		205.7	
A min	79.4		97.4	
B max	-	126.3	-	126.3
B min	-	54.1	-	54.1
C max	168.0	168.0	168.0	168.0
H max	355.6	482.0	373.7	500.0

	ES6A3		ES83	
A max	180.8		198.8	
A min	72.5		90.2	
B max	-	126.3	-	126.3
B min	-	54.1	-	54.1
C max	168.0	168.0	168.0	168.0
H max	348.8	475.1	366.8	493.1

GRÚA TREPADORA

Internal climbing crane / Grue avec cage de télescopage intérieure / Kran mit klettern im Gebäude / Gru in rampante in cavedio / Кран с самоподъемом



H	Hs < 1,310 ft	
	A max (ft)	A min (ft)
198.5 ft 5x D35 + TD36B + 4x D36A + CLD36A-28	71.9	26.2
180.4 ft 4x D35 + TD36B + 4x D36A + CLD36A-28	62.7	26.2
162.4 ft 3x D35 + TD36B + 4x D36A + CLD36A-28	53.8	26.2

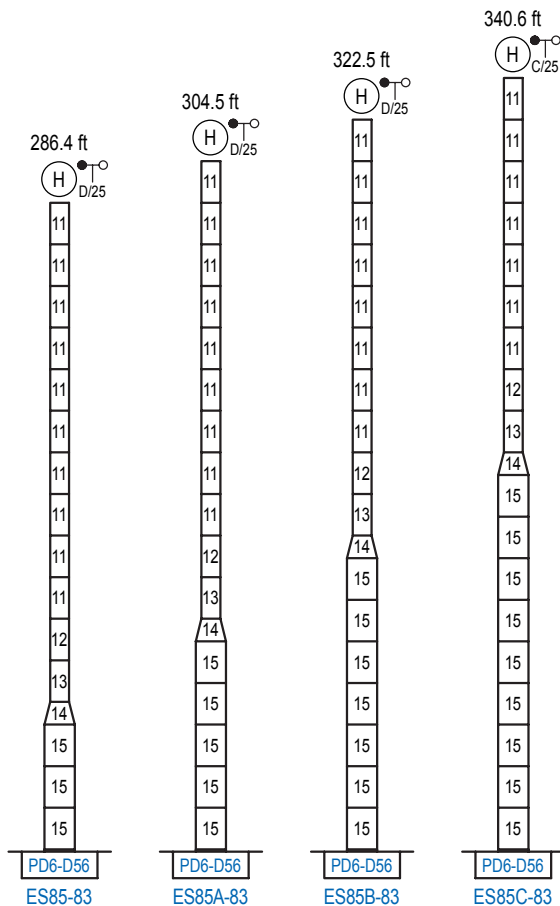
n°	Ref.	h
11	D35	8.2 18.0
12	TD36B	8.2 18.0
22	D36A	8.2 18.0
19	CLD36A-28	8.2 12.5

Otras zonas de viento, alturas superiores, arriostramientos o trepado interno consultar / Other wind zones, additional hook heights, tie frames or internal climbing on request / Autres zones de vent, des hauteurs supplémentaires, entretoisements ou grues avec cage de télescopage intérieure, sur demande / Andere Windzonen, weitere Hakenhöhen, Abspannungen zum Gebäude oder Klettern im Gebäude auf Anfrage / Per zone con velocità del vento particolari, altezze superiori, ancoraggi o rampante in cavedio, consultare il fabbricante / При других ветренных зонах, при большой высоте, привязках к зданию или наращивании крана внутри здания проконсультируйтесь с нами

ALTURAS ESPECIALES

Special heights / Spéciaux hauteurs / Extra Höhen / Conformazioni raccordate per altezze speciali / Для специальной высоты

∅ 13.1 ft



n°	Ref.	h
11	D35	8.2 18.0
12	TD36B	8.2 18.0
13	D36B	8.2 18.0
14	TD56D36	13.1 9.8
15	D56	13.1 18.0

Otras zonas de viento o alturas superiores consultar / Other wind zones or additional hook heights on request / Autres zones de vent ou des hauteurs supplémentaires sur demande / Andere Windzonen oder weitere Hakenhöhen auf Anfrage / Per zone con velocità del vento particolari o altezze superiori consultare il fabbricante / При других ветренных зонах о при большой высоте проконсультируйтесь с нами