

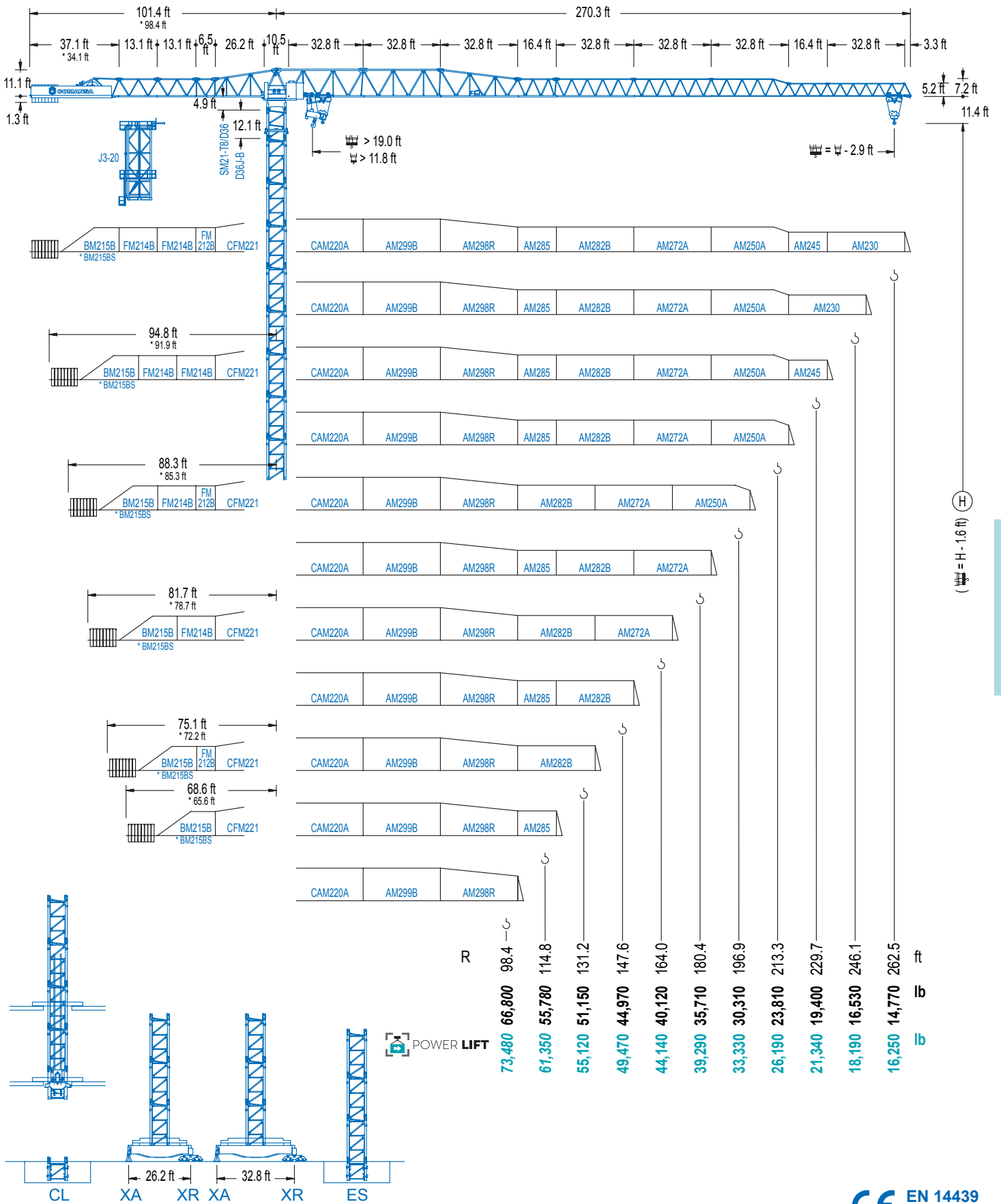


**COMANSA**

**2100 Series**

**21 LC 750**

**110,230 lb**

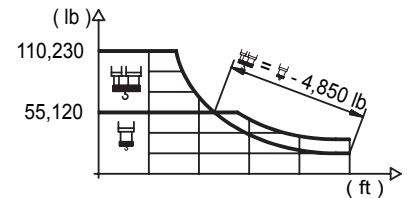


**2100 Series**

## DIAGRAMA DE CARGAS

Load chart / Diagramme de charges / Lastdiagramm / Diagramma di carico / Диаграмма распределения нагрузки

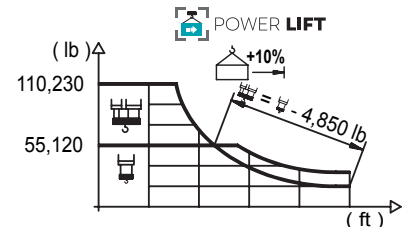
R (ft)																				
262.5	45.6	55.8	65.6	75.5	80.4	86.3	98.4	108.3	114.8	121.4	131.2	147.6	164.0	180.4	196.9	213.3	229.7	246.1	262.5	ft lb
	110,230	86,020	70,590	59,480	55,120	55,120	47,350	42,480	39,730	37,260	34,060	29,720	26,260	23,460	21,120	19,160	17,480	16,030	14,770	
246.1	46.3	55.8	65.6	75.5	82.0	88.3	98.4	108.3	114.8	121.4	131.2	147.6	164.0	180.4	196.9	213.3	229.7	246.1		ft lb
	110,230	88,180	72,400	61,020	55,120	55,120	48,660	43,650	40,830	38,320	35,030	30,560	27,030	24,140	21,740	19,730	18,010	16,530		
229.7	48.9	55.8	65.6	75.5	86.6	93.5	98.4	108.3	114.8	121.4	131.2	147.6	164.0	180.4	196.9	213.3	229.7			ft lb
	110,230	94,030	77,290	65,230	55,120	55,120	51,980	46,650	43,650	40,960	37,480	32,740	28,970	25,900	23,370	21,230	19,400			
213.3	53.1	65.6	75.5	82.0		94.8	102.7	108.3	114.8	121.4	131.2	147.6	164.0	180.4	196.9	213.3				ft lb
	110,230	85,870	72,620	65,680		55,120	55,120	51,870	48,550	45,590	41,730	36,510	32,340	28,970	26,170	23,810				
196.9	59.7	65.6	75.5	82.0		88.6	98.4	106.6	116.1	121.4	131.2	147.6	164.0	180.4	196.9					ft lb
	110,230	98,610	83,580	75,680		69,050	60,800	55,120	55,120	52,430	48,040	42,090	37,350	33,510	30,310					
180.4	62.7	75.5	82.0			88.6	98.4	108.3	112.5	122.7	131.2	147.6	164.0							ft lb
	110,230	88,800	80,470			73,440	64,750	57,720	55,120	55,120	51,100	44,800	39,790							
164.0	63.0	75.5	82.0			88.6	98.4	108.3	113.2	123.7	131.2	147.6								ft lb
	110,230	89,290	80,930			73,850	65,120	58,070	55,120	55,120	51,540	45,170	40,120							
147.6	62.7	75.5	82.0			88.6	98.4	108.3	112.2	123.0	131.2	147.6								ft lb
	110,230	88,620	80,310			73,300	64,620	57,610	55,120	55,120	51,300	44,970								
131.2	62.3	75.5	82.0			88.6	98.4	108.3	111.5	122.7	131.2									ft lb
	110,210	88,010	79,740			72,770	64,150	57,190	55,120	55,120	51,150									
114.8	63.3	75.5	82.0			88.6	98.4	108.3	111.9											ft lb
	110,230	89,550	81,170			74,070	65,320	58,250	55,780											
98.4	62.7	75.5	82.0			88.6	95.5													ft lb
	110,230	88,690	80,360			73,350	66,800													



## DIAGRAMA DE CARGAS POWERLIFT

Load chart PowerLift / Diagramme de charges PowerLift / Lastdiagramm PowerLift / Diagramma di carico PowerLift / Диаграмма распределения нагрузки PowerLift

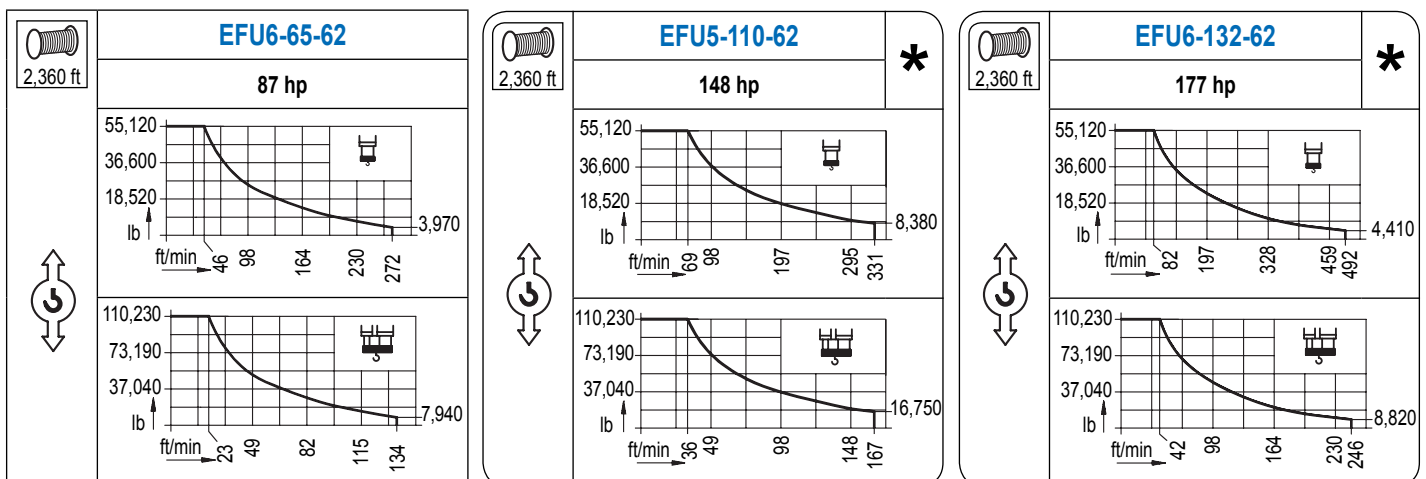
R (ft)																				
262.5	47.6	55.8	65.6	75.5	84.0	92.5	98.4	108.3	114.8	121.4	131.2	147.6	164.0	180.4	196.9	213.3	229.7	246.1	262.5	ft lb
	110,230	90,980	74,760	63,050	55,120	55,120	51,430	46,160	43,190	40,540	37,080	32,390	28,660	25,620	23,100	20,990	19,180	17,610	16,250	
246.1	48.9	55.8	65.6	75.5	86.3	94.8	98.4	108.3	114.8	121.4	131.2	147.6	164.0	180.4	196.9	213.3	229.7	246.1		ft lb
	110,230	93,650	76,980	64,990	55,120	55,120	52,910	47,510	44,440	41,730	38,180	33,360	29,520	26,410	23,830	21,650	19,800	18,190		
229.7	51.5	55.8	65.6	75.5	82.0	91.5	100.7	108.3	114.8	121.4	131.2	147.6	164.0	180.4	196.9	213.3	229.7			ft lb
	110,230	100,380	82,630	69,820	63,120	55,120	55,120	50,880	47,620	44,710	40,940	35,800	31,700	28,400	25,640	23,320	21,340			
213.3	56.4	65.6	75.5	82.0		88.6	100.7	110.9	114.8	121.4	131.2	147.6	164.0	180.4	196.9	213.3				ft lb
	110,230	92,310	78,150	70,720		64,460	55,120	55,120	53,060	49,850	45,680	39,990	35,470	31,790	28,750	26,190				
196.9	63.6	75.5	82.0			88.6	98.4	108.3	114.2	126.0	131.2	147.6	164.0	180.4	196.9					ft lb
	110,230	90,390	81,920			74,780	65,940	58,800	55,120	55,120	52,620	46,140	40,980	36,790	33,330					
180.4	67.3	75.5	82.0			88.6	98.4	108.3	114.8	120.7	133.2	147.6	164.0	180.4						ft lb
	110,230	96,360	87,390			79,830	70,460	62,880	58,600	55,120	55,120	49,180	43,740	39,290						
164.0	67.6	75.5	82.0			88.6	98.4	108.3	114.8	121.4	134.5	147.6	164.0							ft lb
	110,230	97,130	88,100			80,470	71,030	63,400	59,080	55,120	55,120	49,650	44,140							
147.6	67.3	75.5	82.0			88.6	98.4	108.3	114.8	121.1	133.9	147.6								ft lb
	110,230	96,610	87,610			80,030	70,640	63,050	58,730	55,120	55,120	49,470								
131.2	67.3	75.5	82.0			88.6	98.4	108.3	114.8	120.4	131.2									ft lb
	110,230	96,140	87,170			79,630	70,280	62,740	58,440	55,120	55,120									
114.8	68.2	75.5	82.0			88.6	98.4	108.3	111.9											ft lb
	110,230	98,040	88,930			81,240	71,740	64,040	61,350											
98.4	67.9	75.5	82.0			88.6	95.5													ft lb
	110,230	97,290	88,230			80,600	73,480													



Datos válidos hasta 328 ft de ABG. Para alturas mayores consultar / Valid data up to 328 ft HUH. Additional heights on request / Données valables jusqu'à 328 ft HSC. Pour des autres hauteurs, merci de nous consulter / Gültige Daten bis zu 328 ft HH. Bei höheren Hakenhöhen nachfragen / Dati validi fino a 328 ft ASG. Per altezze superiori consultare Comansa / Допустимые данные до 328 фут ВПК. Для более высоких высот консультируйтесь

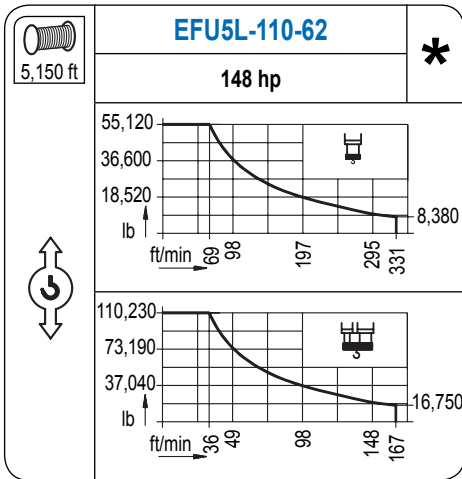
## MECANISMOS

Mechanisms / Mécanismes / Antriebe / Meccanismi / Механизмы

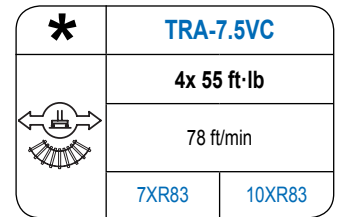
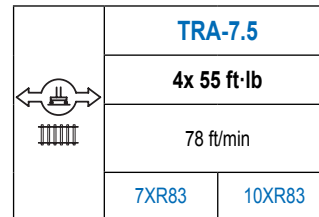
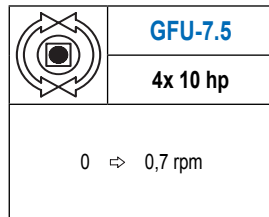
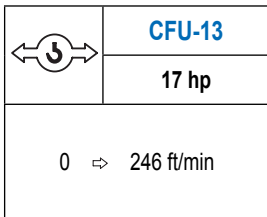
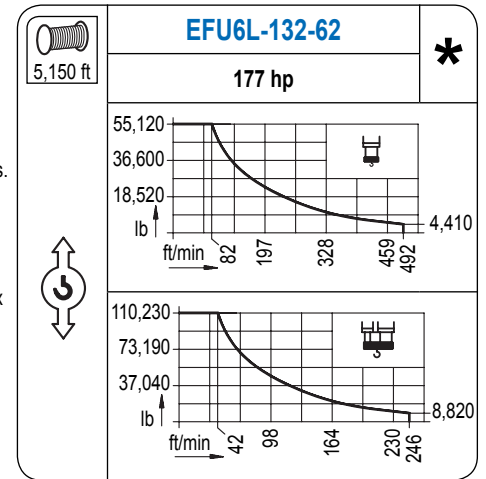


# MECANISMOS

Mechanisms / Mécanismes / Antriebe / Meccanismi / Механизмы



Para mecanismos de alta capacidad de cable consultar cargas.  
/ For mechanisms with high drum capacity, request loads.  
/ Pour des mécanismes avec une grande capacité de câble il faut consulter.  
/ Für Hubmechanismen mit hoher Kabelkapazität, Lastdiagramm anfragen.  
/ Gru con tamburo ad alta capacità di avvolgimento fune, consultare il diagramma di carico.  
/ Проконсультируйтесь о нагрузках при механизмах с большей вместимостью кабеля.



Elevación / Hoist / Levage / Hub / Sollevamento / Тип механизма (подъем)	Carro / Trolley / Chariot / Laufkatze / Carrello / Грузовая тележка	Giro / Slewing / Rotation / Drehbewegung / Rotazione / Поворот	Traslación / Travel / Translation / Verfahrbewegung / Traslazione / Ход	Tensión de alimentación / Operating voltage / Tension de service / Betriebsspannung / Tensione di alimentazione / Напряжение источника питания	Potencia requerida / Required power / Puissance requise / Benötigte Leistung / Potenza richiesta / требуемая мощность
EFU6-65-62	CFU-13	(4x) GFU-7.5	(4x) TRA-7.5	480 V 3ph 60 Hz	99 kVA
EFU5-110-62					144 kVA
EFU5L-110-62					144 kVA
EFU6-132-62					166 kVA
EFU6L-132-62					166 kVA

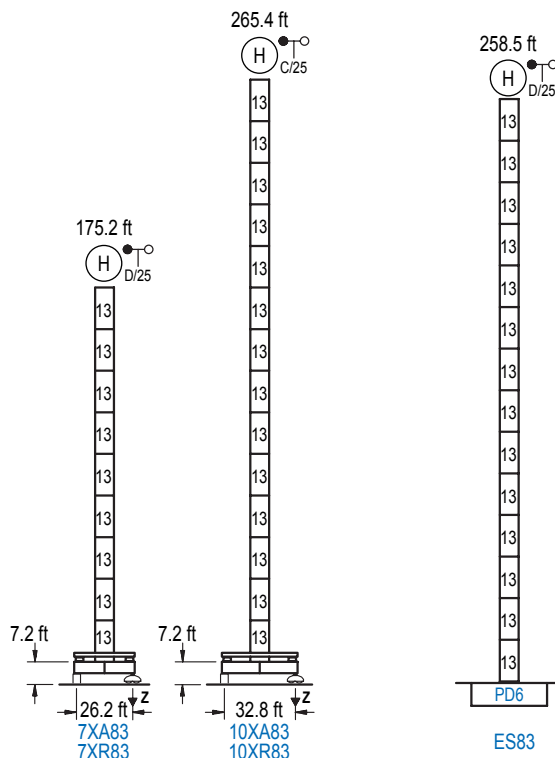
Optional /  
Optional / En  
option / Kaufoption  
/ Opzionale /  
Опционально

\*

## ALTURAS BAJO GANCHO

Heights under hook / Hauteurs sous crochet / Hakenhöhen / Altezza sotto gancio / Высота под крюком

∅ 8.2 ft



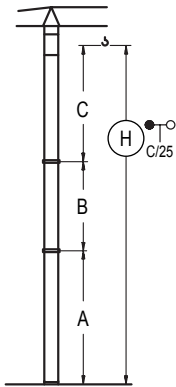
n°	Ref.	∅	h
13	D36B	2,5	5,5

<b>Z máx.</b>	En servicio / In operation / En service / In Betrieb / In servizio / При работе	7XR83.....394 kip 10XR83.....392 kip
	Fuera de servicio / Out of service / Hors service / Ausser Betrieb / Fuori servizio / В стационарном состоянии	7XR83.....289 kip 10XR83.....412 kip

Otras zonas de viento o alturas superiores consultar / Other wind zones or additional hook heights on request / Autres zones de vent ou des hauteurs supplémentaires sur demande / Andere Windzonen oder weitere Hakenhöhen auf Anfrage / Per zone con velocità del vento particolari o altezze superiori consultare il fabbricante / При других ветренных зонах о при большой высоте проконсультируйтесь с нами

## GRÚA ARRIOSTRADA

Braced crane / Grue à entretoisement / Abgespannter Kran / Gru ancorata / Нарастиваемый кран

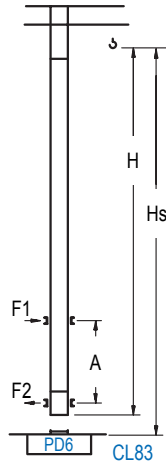


	7XA83		10XA83	
A max	133.5		223.8	
A min	133.5		133.5	
B max	-	162.4	-	162.4
B min	-	108.3	-	108.3
C max	204.1	204.1	204.1	204.1
H max	337.6	500.0	427.8	590.2

	ES83	
A max	216.9	
A min	126.6	
B max	-	162.4
B min	-	108.3
C max	204.1	204.1
H max	420.9	583.3

## GRÚA TREPADORA

Internal climbing crane / Grue avec cage de télescopage intérieure / Kran mit klettern im Gebäude / Gru in rampante in cavedio / Кран с самоподъемом



H	C/25	Hs < 1,310 ft	
		A max (ft)	A min (ft)
198.5 ft	6x D36B + 4x D36A + CLD36A-28	71.9	29.5
180.4 ft	5x D36B + 4x D36A + CLD36A-28	62.7	29.5
162.4 ft	4x D36B + 4x D36A + CLD36A-28	53.8	29.5

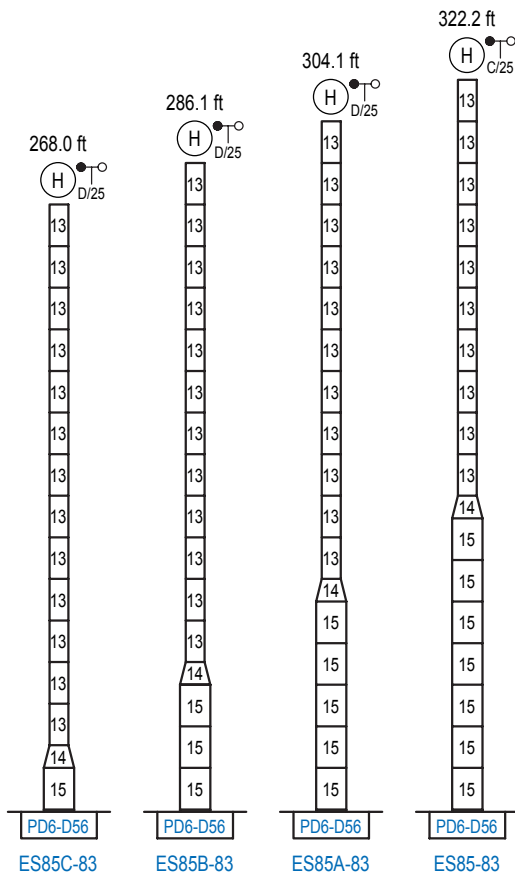
n°	Ref.	h	h
13	D36B	8.2	18.0
22	D36A	8.2	18.0
19	CLD36A-28	8.2	12.5

Otras zonas de viento, alturas superiores, arriostramientos o trepado interno consultar / Other wind zones, additional hook heights, tie frames or internal climbing on request / Autres zones de vent, des hauteurs supplémentaires, entretoisements ou grues avec cage de télescopage intérieure, sur demande / Andere Windzonen, weitere Hakenhöhen, Abspannungen zum Gebäude oder Klettern im Gebäude auf Anfrage / Per zone con velocità del vento particolari, altezze superiori, ancoraggi o rampante in cavedio, consultare il fabbricante / При других ветренных зонах, при большой высоте, привязках к зданию или наращивании крана внутри здания проконсультируйтесь с нами

## ALTURAS ESPECIALES

Special heights / Spéciaux hauteurs / Extra Höhen / Conformazioni raccordate per altezze speciali / Для специальной высоты

Ø 13.1 ft



n°	Ref.	h	h
13	D36B	8.2	18.0
14	TD56D36	13.1	9.8
15	D56	13.1	18.0

Otras zonas de viento o alturas superiores consultar / Other wind zones or additional hook heights on request / Autres zones de vent ou des hauteurs supplémentaires sur demande / Andere Windzonen oder weitere Hakenhöhen auf Anfrage / Per zone con velocità del vento particolari o altezze superiori consultare il fabbricante / При других ветренных зонах о при большой высоте проконсультируйтесь с нами