

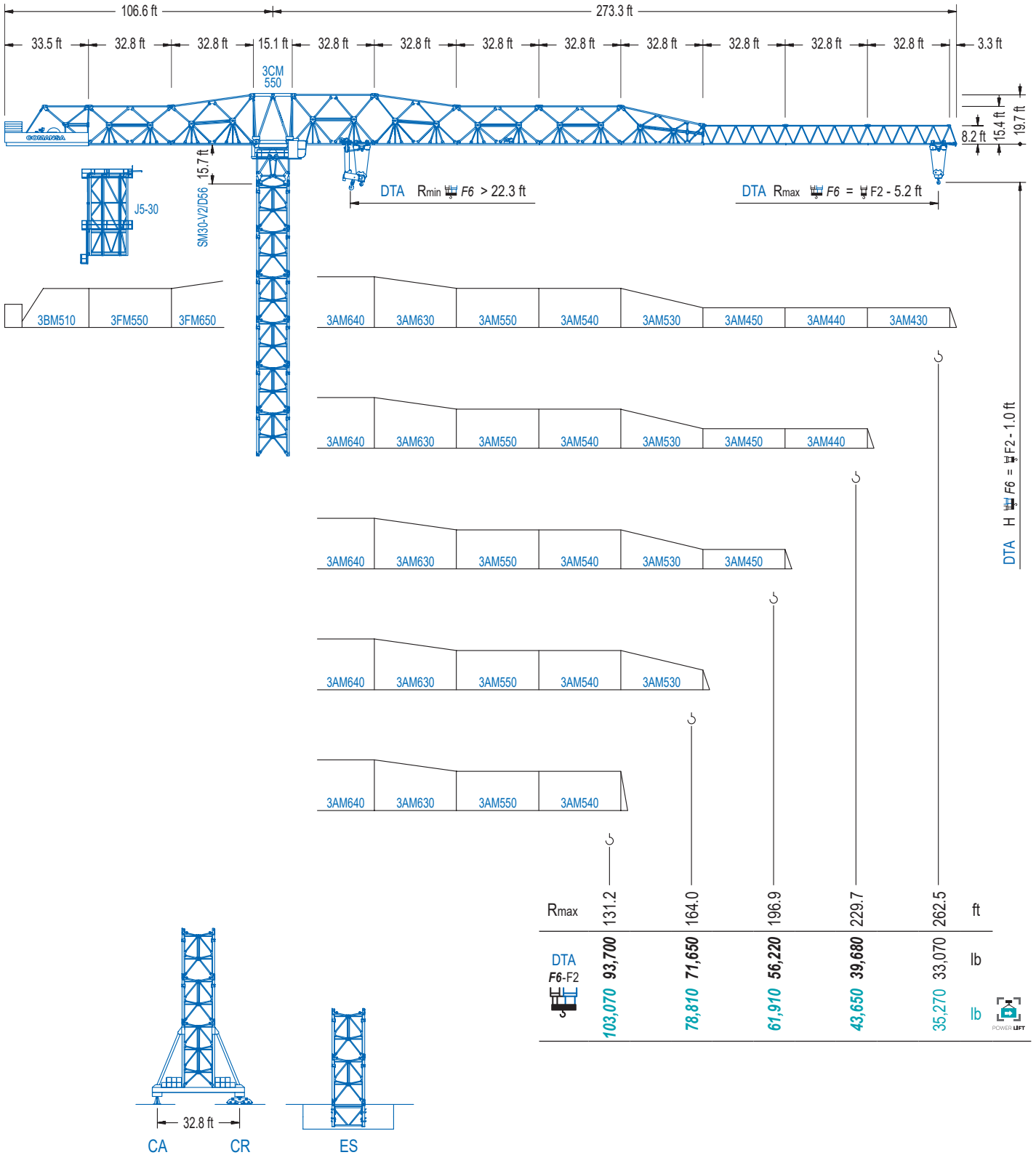


COMANSA

3000 Series

30LC1450

105,820 lb



3000 Series

DTA Doble Carro SR/DR Automático. / Double Trolley Automatic SR/DR. / Double Chariot SM/DM Automatique. / Doppel Katze mit automatischer Umschierung. / Carrello doppio SR/DR automatico. / Автоматическое переключение на двоянную каретку.

CE EN 14439

DS.2239.04.IA

01/23

30LC1450 105,820 lb

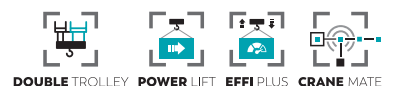
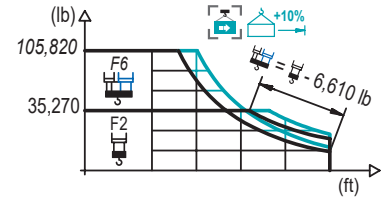


DIAGRAMA DE CARGAS

Load chart / Diagramme de charges / Lastdiagramm / Diagramma di carico / Диаграмма распределения нагрузки

DTA

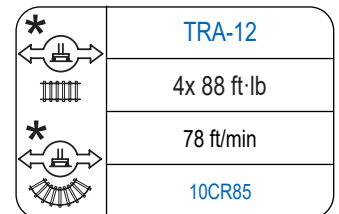
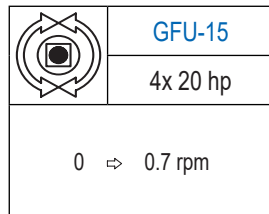
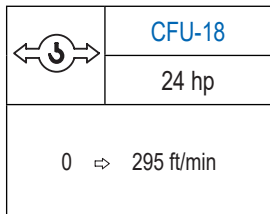
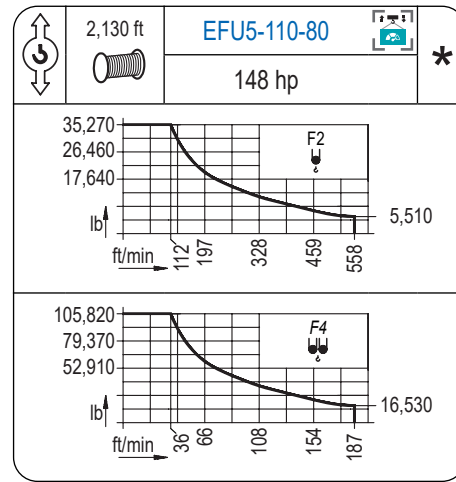
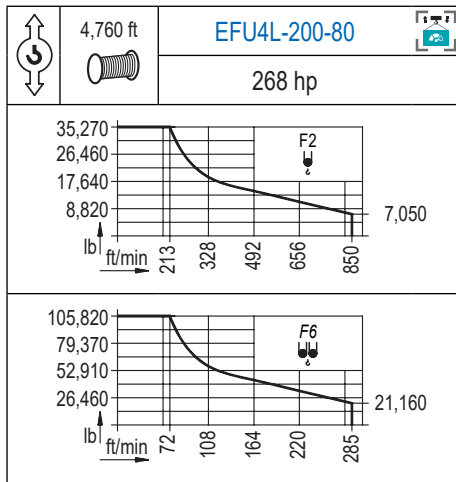
R	105,820 lb		35,270 lb		F6										F2					↔ (ft) ⇅ (lb)					
	↔	⇅	↔	⇅	82.0	98.4	114.8	126.0	131.2	147.6	158.8	164.0	180.4	191.6	196.9	213.3	224.4	229.7	246.1		262.5				
262.5	87.3	210.0 248.0	105,820	91,780	76,170	68,010	64,660	55,820	50,900	48,830	43,170	39,880	38,450	35,270	35,270	35,270	35,270	35,270	35,270	35,270	35,270	35,270	35,270	35,270	35,270
	93.2	224.1 262.5	105,820	98,990	82,280	73,550	69,970	60,540	55,270	53,040	46,980	43,450	41,930	37,720	35,270	35,270	35,270	35,270	35,270	35,270	35,270	35,270	35,270	35,270	35,270
229.7	101.4	224.4	105,820	91,290	81,720	77,800	67,460	61,680	59,240	52,580	48,720	47,070	42,440	39,680	37,720	35,270	35,270	35,270	35,270	35,270	35,270	35,270	35,270	35,270	35,270
	108.9	224.4	105,820	99,270	88,960	84,740	73,570	67,350	64,730	57,560	53,400	51,610	46,630	43,650	37,720	35,270	35,270	35,270	35,270	35,270	35,270	35,270	35,270	35,270	35,270
192.6	113.2	191.6	105,820	104,080	93,300	88,910	77,270	70,770	68,030	60,560	56,220	52,220	47,070	43,650	37,720	35,270	35,270	35,270	35,270	35,270	35,270	35,270	35,270	35,270	35,270
	122.0	191.6	105,820	102,010	97,240	84,630	77,600	74,650	66,530	61,840	56,220	52,220	47,070	43,650	37,720	35,270	35,270	35,270	35,270	35,270	35,270	35,270	35,270	35,270	35,270
164.0	114.5	158.8	105,820	105,310	94,420	89,970	78,220	71,650	68,030	60,560	56,220	52,220	47,070	43,650	37,720	35,270	35,270	35,270	35,270	35,270	35,270	35,270	35,270	35,270	35,270
	123.7	158.8	105,820	103,550	98,720	85,940	78,810	71,650	68,030	60,560	56,220	52,220	47,070	43,650	37,720	35,270	35,270	35,270	35,270	35,270	35,270	35,270	35,270	35,270	35,270
131.2	113.5	126.0	105,820	104,500	93,700	89,970	78,220	71,650	68,030	60,560	56,220	52,220	47,070	43,650	37,720	35,270	35,270	35,270	35,270	35,270	35,270	35,270	35,270	35,270	35,270
	123.0	126.0	105,820	103,070	93,700	89,970	78,220	71,650	68,030	60,560	56,220	52,220	47,070	43,650	37,720	35,270	35,270	35,270	35,270	35,270	35,270	35,270	35,270	35,270	35,270



Datos válidos hasta 328 ft de ABG. Para alturas mayores consultar / Valid data up to 328 ft HUH. Additional heights on request / Données valables jusqu'à 328 ft HSC. Pour des autres hauteurs, merci de nous consulter / Gültige Daten bis zu 328 ft HH. Bei höheren Hakenhöhen nachfragen / Dati validi fino a 328 ft ASG. Per altezze superiori consultare Comansa / Допустимые данные до 328 фут ВПК. Для более высоких высот консультируйтесь

MECANISMOS

Mechanisms / Mécanismes / Antriebe / Meccanismi / Механизмы



Elevación / Hoist / Levage / Hub / Sollevamento / Тип механизма (подъем)	Carro / Trolley / Chariot / Laufkatze / Carrello / Грузовая тележка	Giro / Slewing / Rotation / Drehbewegung / Rotazione / Поворот	Traslación / Travel / Translation / Verfahrbewegung / Traslazione / Ход	Tensión de alimentación / Operating voltage / Tension de service / Betriebsspannung / Tensione di alimentazione / Напряжение источника питания	Potencia requerida / Required power / Puissance requise / Benötigte Leistung / Potenza richiesta / требуемая мощность
EFU4L-200-80	CFU-18	(4x) GFU-15	(4x) TRA-12	480 V	262 KVA
EFU5-110-80				3 ph 60 Hz	172 KVA

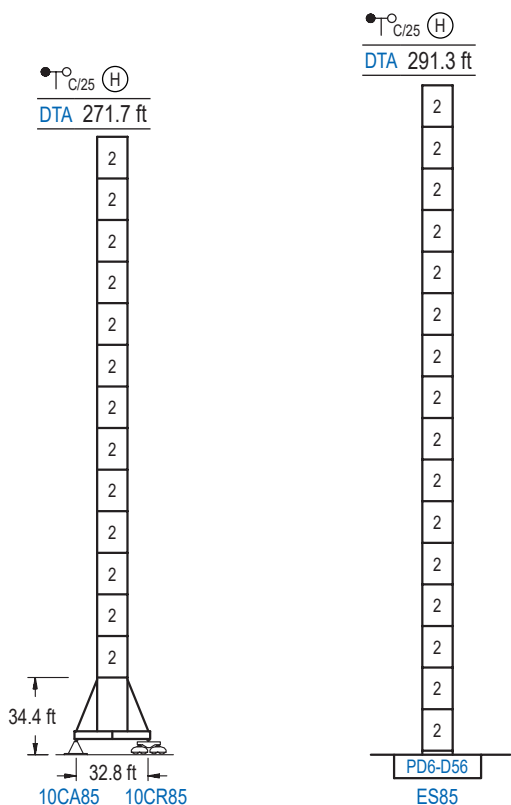
Opzionale / Optional / En option / Kaufoption / Opzionale / Опционально

*

ALTURAS BAJO GANCHO

Heights under hook / Hauteurs sous crochet / Hakenhöhen / Altezza sotto gancio / Высота под крюком

∅ 13.1 ft

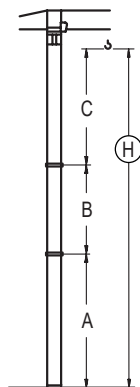


n°	Ref.	∅	h
2	D56	13.1	18.0

GRÚA ARRIOSTRADA

Braced crane / Grue à entretoisement / Abgespannter Kran / Gru ancorata / Наращиваемый кран

∅ 13.1 ft



DTA (H) $\frac{\circ}{C/25}$		10CA85
A max		214.9
A min		124.7
B max		162.4
B min	-	90.2
C max	219.2	219.2
H max	434.1	596.5

DTA (H) $\frac{\circ}{C/25}$		ES85
A max		234.6
A min		126.3
B max		162.4
B min	-	90.2
C max	219.2	219.2
H max	453.7	616.1

Otras zonas de viento o alturas superiores consultar / Other wind zones or additional hook heights on request / Autres zones de vent ou des hauteurs supplémentaires sur demande / Andere Windzonen oder weitere Hakenhöhen auf Anfrage / Per zone con velocità del vento particolari o altezze superiori consultare il fabbricante / При других ветренных зонах о при большой высоте проконсультируйтесь с нами

3000 Series

