
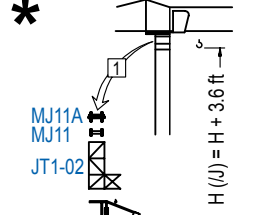
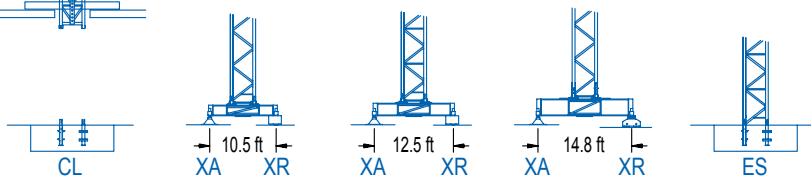
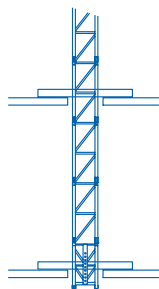


*  L

AM5-30 = AM5-35T + AM5-35D

*  H (J) = H + 3.6 ft

1 Montaje inicial / Initial erection
Montage initial / Erstmontage
Montaggio iniziale
Первоначальный монтаж





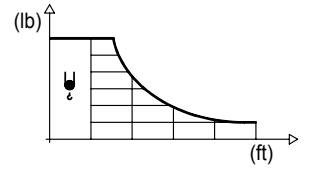
R	65.6	73.8	82.0	90.2	98.4	106.6	114.8	ft
 POWER LIFT	5,340	4,610	4,120	3,640	3,150	2,670	2,430	lb
 POWER LIFT	5,090	4,370	3,880	3,400	2,910	2,430	2,180	lb

DIAGRAMA DE CARGAS

Load chart / Diagramme de charges / Lastdiagramm / Diagramma di carico / Диаграмма распределения нагрузки

R (ft)	ψ	RCmax (ft)	24.6	32.8	41.0	49.2	57.4	65.6	73.8	82.0	90.2	98.4	106.6	114.8	↔ (ft) ↓ (lb)
114.8		52.8				5,510	5,000	4,300	3,750	3,310	2,950	2,670	2,430	2,200	
106.6		52.8				5,510	5,030	4,300	3,770	3,330	2,980	2,670	2,430		
98.4		56.1				5,510	5,360	4,610	4,010	3,550	3,170	2,870			
90.2		57.7					5,510	4,780	4,170	3,700	3,310				
82.0		58.4					5,510	4,850	4,230	3,750					
73.8		58.1					5,510	4,780	4,190						
65.6		58.7					5,510	4,850							



R (ft)	ψ/ψψ	RCmax (ft)	24.6	32.8	41.0	49.2	57.4	65.6	73.8	82.0	90.2	98.4	106.6	114.8	↔ (ft) ↓ (lb)
114.8		28.5	11,020	9,410	7,250	5,860	4,870	4,140	3,570	3,130	2,760	2,450	2,200	1,980	
106.6		28.5	11,020	9,440	7,280	5,860	4,870	4,140	3,570	3,130	2,760	2,470	2,200		
98.4		30.2	11,020	10,010	7,740	6,240	5,200	4,430	3,810	3,350	2,980	2,650			
90.2		31.2	11,020	10,360	8,000	6,460	5,380	4,590	3,970	3,480	3,090				
82.0		31.5	11,020	10,470	8,090	6,550	5,450	4,650	4,010	3,530					
73.8		31.2	11,020	10,360	8,000	6,460	5,380	4,590	3,970						
65.6		31.5	11,020	10,450	8,070	6,530	5,450	4,630							

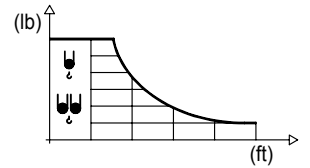
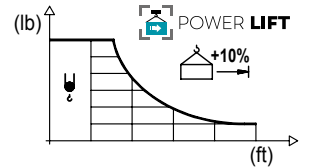


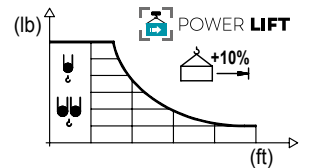
DIAGRAMA DE CARGAS POWERLIFT

Load chart PowerLift / Diagramme de charges PowerLift / Lastdiagramm PowerLift / Diagramma di carico PowerLift / Диаграмма распределения нагрузки PowerLift

R (ft)	ψ	RCmax (ft)	24.6	32.8	41.0	49.2	57.4	65.6	73.8	82.0	90.2	98.4	106.6	114.8	↔ (ft) ↓ (lb)
114.8		56.9					5,510	4,700	4,100	3,620	3,240	2,910	2,650	2,430	
106.6		57.2					5,510	4,720	4,120	3,640	3,260	2,930	2,670		
98.4		60.6					5,510	5,030	4,410	3,900	3,480	3,150			
90.2		62.7					5,510	5,250	4,590	4,060	3,640				
82.0		63.5					5,510	5,310	4,650	4,120					
73.8		63.0					5,510	5,270	4,610						
65.6		63.7					5,510	5,340							



R (ft)	ψ/ψψ	RCmax (ft)	24.6	32.8	41.0	49.2	57.4	65.6	73.8	82.0	90.2	98.4	106.6	114.8	↔ (ft) ↓ (lb)
114.8		30.6	11,020	10,160	7,850	6,330	5,270	4,500	3,880	3,400	3,020	2,690	2,430	2,180	
106.6		30.6	11,020	10,190	7,870	6,350	5,290	4,500	3,900	3,420	3,020	2,690	2,430		
98.4		32.3	11,020	10,850	8,380	6,790	5,670	4,830	4,190	3,660	3,260	2,910			
90.2		33.4		11,020	8,710	7,050	5,890	5,030	4,370	3,840	3,400				
82.0		33.8		11,020	8,820	7,140	5,950	5,090	4,410	3,880					
73.8		33.5		11,020	8,730	7,050	5,910	5,030	4,370						
65.6		33.8		11,020	8,820	7,140	5,970	5,090							



MECANISMOS

Mechanisms / Mécanismes / Antriebe / Meccanismi / Механизмы

ES3-18-12
820 ft
29 hp

	I	II	III
ft/min	32	126	252
lb	5,510	5,510	2,870

	I	II	III
ft/min	16	63	126
lb	11,020	11,020	5,730

ES3-13-12
740 ft
21 hp

	I	II	III
ft/min	24	94	189
lb	5,510	2,500	2,870

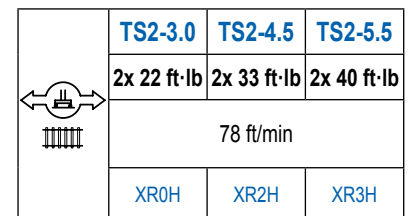
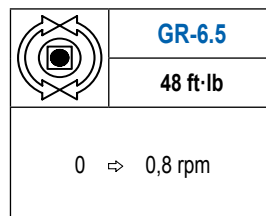
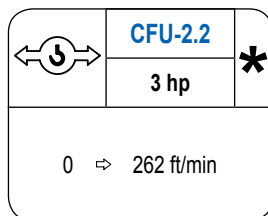
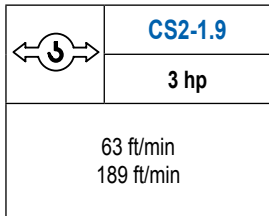
	I	II	III
ft/min	12	47	94
lb	11,020	11,020	5,730

EFU2-18-12
820 ft
24 hp

EFU2-11-12
740 ft
15 hp

MECANISMOS

Mechanisms / Mécanismes / Antriebe / Meccanismi / Механизмы



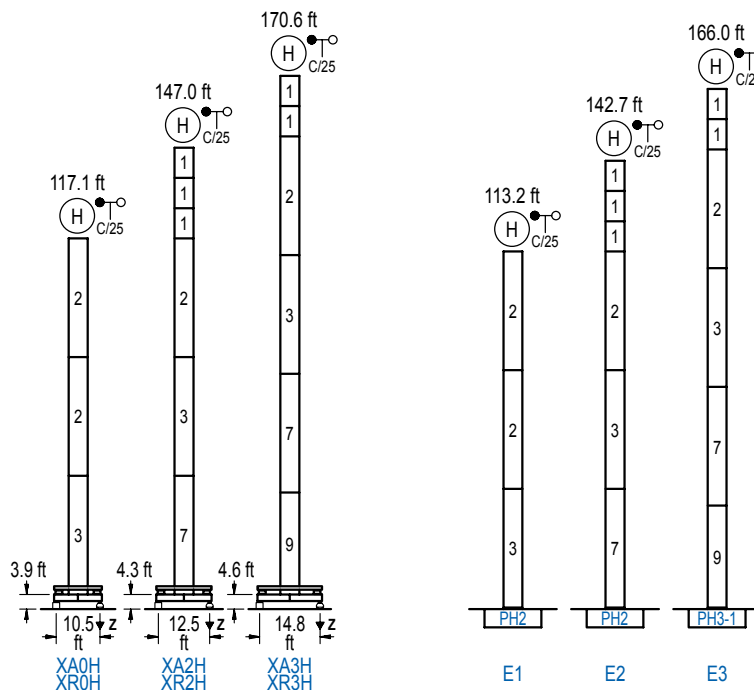
POTENCIA / POWER / PUISSANCE / LEISTUNG / POTENZA / МОЩНОСТЬ				Tensión de alimentación / Operating voltage / Tension de service / Betriebsspannung / Tensione di alimentazione / Напряжение источника питания	Generador / Generator / Générateur / Generator / Генератор
Elevación / Hoist / Levage / Hub / Sollevamento / Тип механизма (подъем)	Carro / Trolley / Chariot / Laufkatze / Carrelo / Грузовая тележка	Giro / Slewing / Rotation / Drehbewegung / Rotazione / Поворот	Traslación / Travel / Translation / Verfahrbewegung / Traslazione / Ход	480 V 3ph 60 Hz	107 kVA 90 kVA 60 kVA 48 kVA
ES3-18-12	CS2-1.9	GR-6.5	(2x) TS2-3.0		
ES3-13-12			(2x) TS2-4.5		
EFU2-18-12	CFU-2.2		(2x) TS2-5.5		
EFU2-11-12					

Opcional / Optional / En option / Kaufoption / Opzionale / Опционально

ALTURAS BAJO GANCHO

Heights under hook / Hauteurs sous crochet / Hakenhöhen / Altezza sotto gancio / Высота под крюком

∅ 3.9 ft



n°	Ref.	∅	h
1	MH111	3.9	9.8
2	MH114	3.9	38.7
3	MH114A	3.9	38.7
5	MH121	3.9	9.8
7	MH124A	3.9	38.7
9	MT123	3.9	33.1

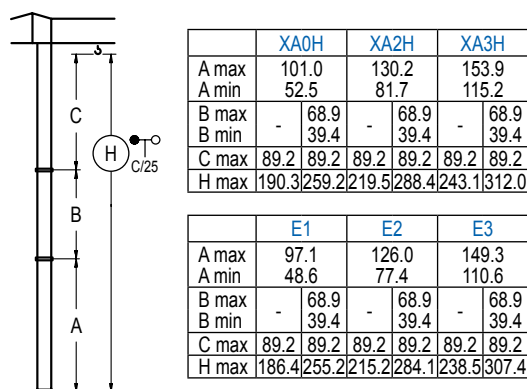
MH114 = 4x MH111 - 0.7 ft

	H = H + 0.7 ft
	H = H
	H = H
	H = H - 0.7 ft

Z máx.	En servicio / In operation / En service / In Betrieb / In servizio / При работе	XR0H..... 77 kip XR2H..... 90 kip XR3H..... 99 kip
	Fuera de servicio / Out of service / Hors service / Ausser Betrieb / Fuori servizio / В стационарном состоянии	XR0H... 108 kip XR2H... 148 kip XR3H... 168 kip

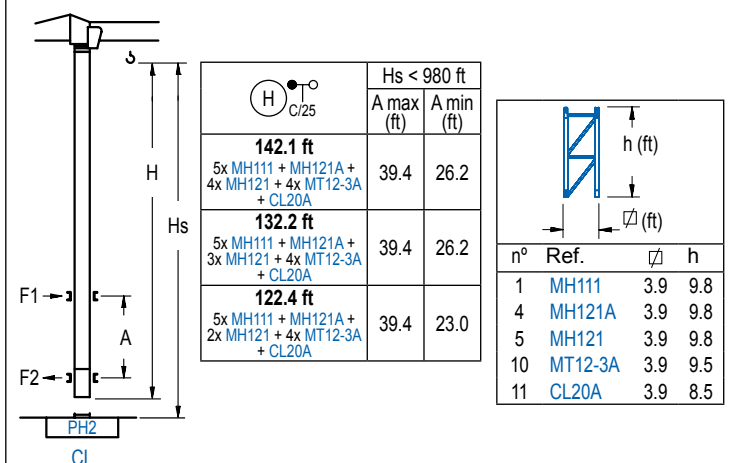
GRÚA ARRIOSTRADA

Braced crane / Grue à entretoisement / Abgespannter Kran / Gru ancorata / Нарастиваемый кран

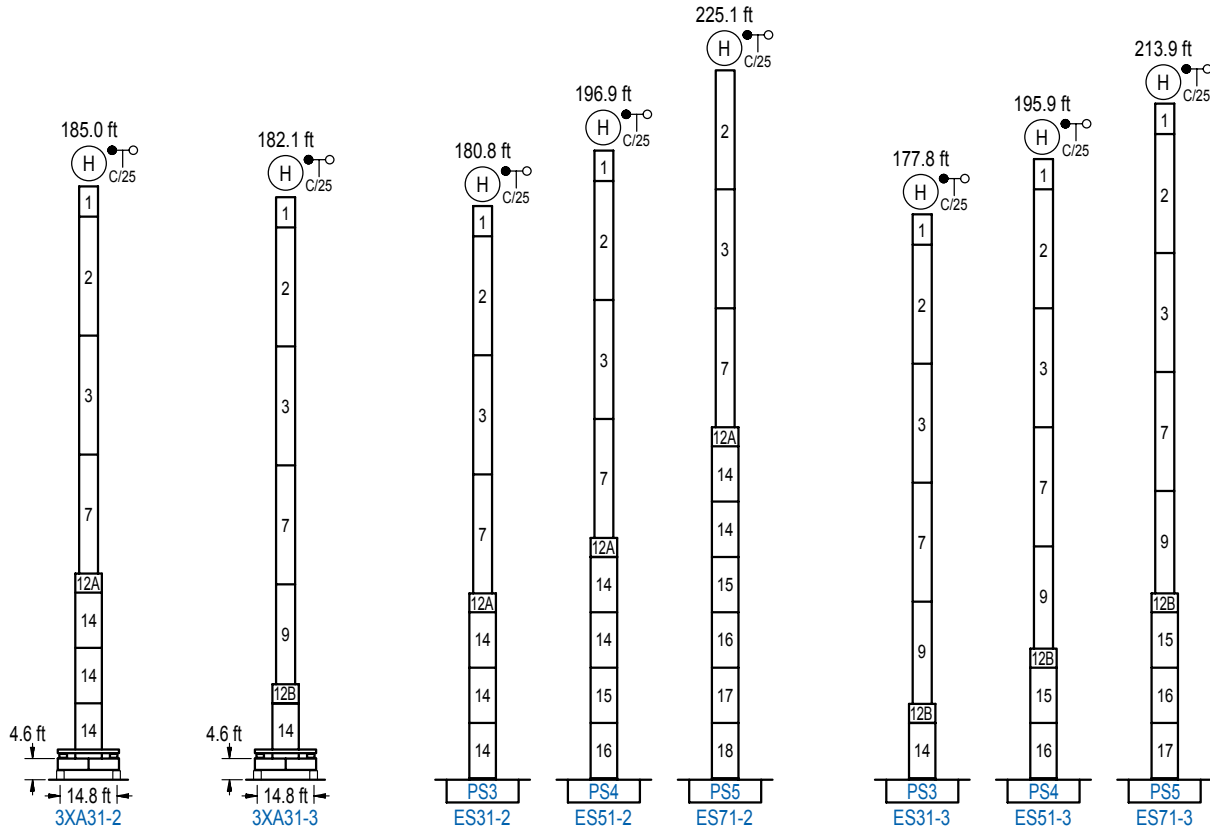


GRÚA TREPADORA

Internal climbing crane / Grue avec cage de télescopage intérieure / Kran mit klettern im Gebäude / Gru in rampante in cavedio / Кран с самоподъемом



Otras zonas de viento, alturas superiores, arriostramientos o trepado interno consultar / Other wind zones, additional hook heights, tie frames or internal climbing on request / Autres zones de vent, des hauteurs supplémentaires, entretoisements ou grues avec cage de télescopage intérieure, sur demande / Andere Windzonen, weitere Hakenhöhen, Abspannungen zum Gebäude oder Klettern im Gebäude auf Anfrage / Per zone con velocità del vento particolari, altezze superiori, ancoraggi o rampante in cavedio, consultare il fabbricante / При других ветренных зонах, при большой высоте, привязках к зданию или наращивании крана внутри здания проконсультируйтесь с нами



n°	Ref.	∅	h	n°	Ref.	∅	h	n°	Ref.	∅	h
1	MH111	3.9	9.8	12A	TMS13/PMH12	5.2	3.3	16	S14	5.2	18.0
2	MH114	3.9	38.7	12B	TMS13/PMH13	5.2	3.3	17	TS15	5.2	18.0
3	MH114A	3.9	38.7	14	S13	5.2	18.0	18	S15	5.2	18.0
7	MH124A	3.9	38.7	15	TS14	5.2	18.0				
9	MT123	3.9	33.1								
MH114 = 4x MH111 - 0.7 ft				1x S13 = 1x S13M				1x S15 = 1x S15M			

Otras zonas de viento o alturas superiores consultar / Other wind zones or additional hook heights on request / Autres zones de vent ou des hauteurs supplémentaires sur demande / Andere Windzonen oder weitere Hakenhöhen auf Anfrage / Per zone con velocità del vento particolari o altezze superiori consultare il fabbricante / При других ветренных зонах о при большой высоте проконсультируйтесь с нами