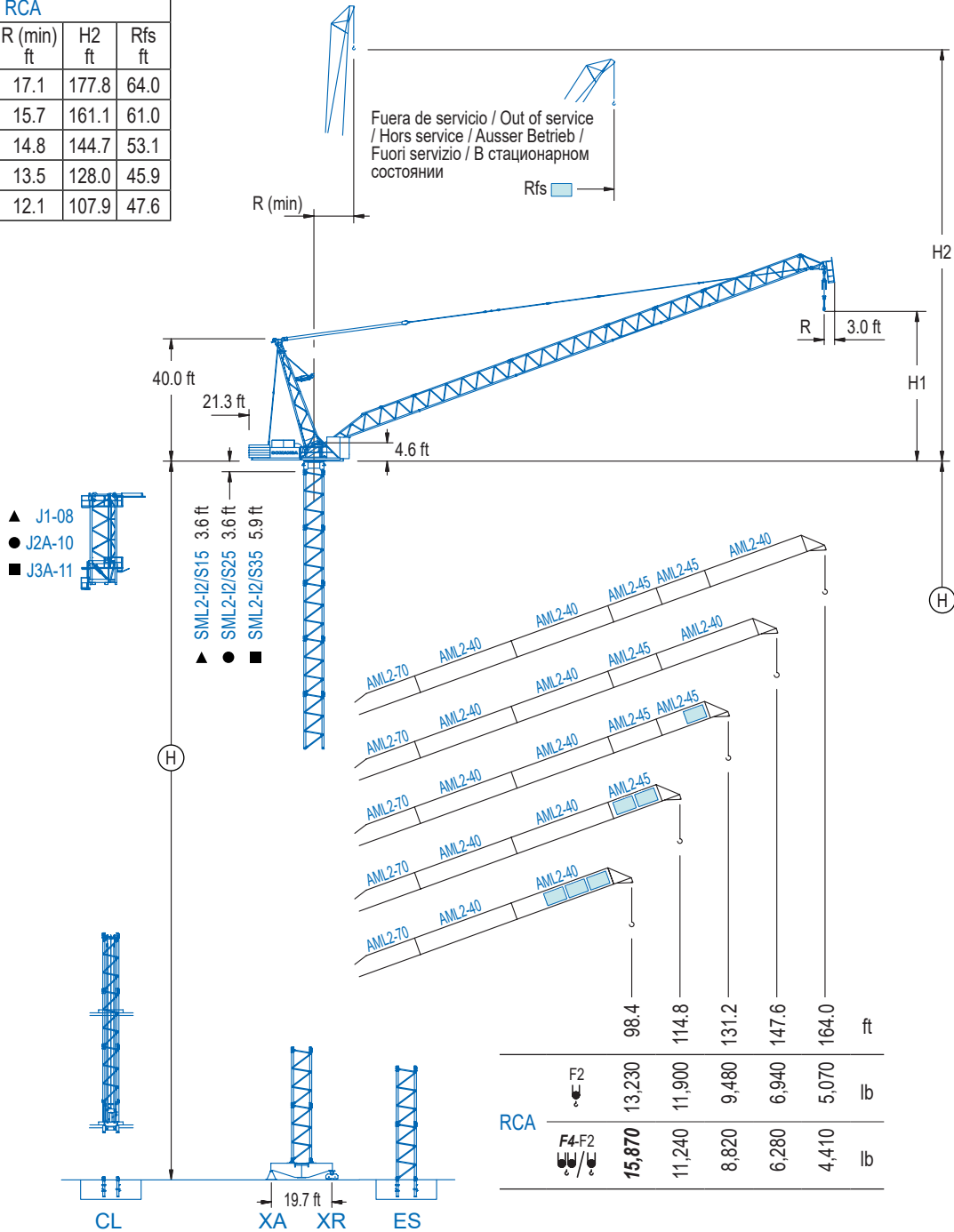


RCA				
R (max) ft	H1 ft	R (min) ft	H2 ft	Rfs ft
164.0	57.7	17.1	177.8	64.0
147.6	53.5	15.7	161.1	61.0
131.2	49.5	14.8	144.7	53.1
114.8	44.9	13.5	128.0	45.9
98.4	32.8	12.1	107.9	47.6



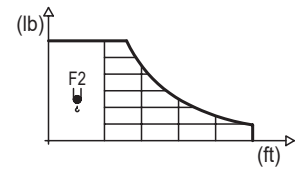
LCL Series

DIAGRAMA DE CARGAS

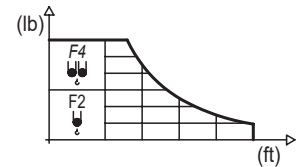
Load chart / Diagramme de charges / Lastdiagramm / Diagramma di carico / Диаграмма распределения нагрузки

RCA

R	13,230 lb	32.8	49.2	65.6	82.0	98.4	114.8	131.2	147.6	164.0	↔ (ft) ↓ (lb)
164.0	93.2				13,230	12,080	9,370	7,520	6,150	5,070	
147.6	96.8				13,230	12,900	10,250	8,380	6,940		
131.2	101.4					13,230	11,290	9,480			
114.8	104.7					13,230	11,900				
98.4	98.4					13,230					



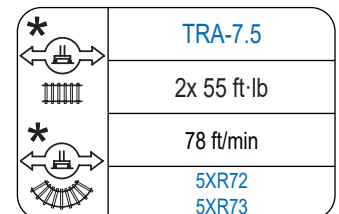
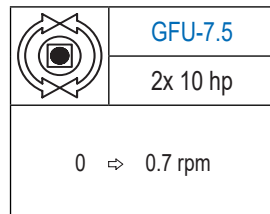
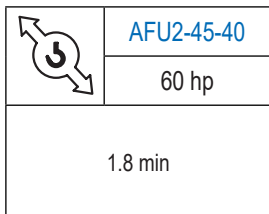
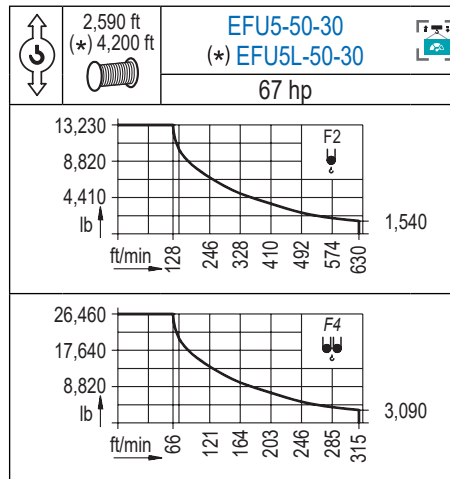
R	26,460 lb	13,230 lb	32.8	49.2	65.6	82.0	98.4	114.8	131.2	147.6	164.0	↔ (ft) ↓ (lb)
164.0	38.7	69.2	26,460	19,840	14,070	10,760	8,600	7,080	5,950	5,090	4,410	
147.6	43.6	79.7	26,460	23,060	16,580	12,810	10,320	8,580	7,280	6,280		
131.2	47.9	91.2	26,460	25,710	18,940	14,880	12,170	10,250	8,820			
114.8	52.2	99.1		26,460	20,700	16,270	13,320	11,240				
98.4	55.1			26,460	22,690	18,580	15,870					



Datos válidos hasta 262 ft de altura de torre. Para alturas mayores consultar / Valid data up to 262 ft of tower height. Additional heights on request / Données valables jusqu'à 262 ft de la hauteur de tour. Pour des autres hauteurs, merci de nous consulter / Gültige Daten bis zu 262 ft Turmhöhe. Bei mehr Höhe nachfragen / Dati validi per altezza massima 262 ft di torre. Per altezze superiori consultare Comansa / Допустимые данные до 262 фут высоты крана. Для более высоких высот консультируйтесь

MECANISMOS

Mechanisms / Mécanismes / Antriebe / Meccanismi / Механизмы



Elevación / Hoist / Levage / Hub / Sollevamento / Тип механизма (подъем)	Abatimiento / Luffing / Relevage / Einziehen / Brandeggio / Складывание	Giro / Slewing / Rotation / Drehbewegung / Rotazione / Поворот	Traslación / Travel / Translation / Verfahrbewegung / Traslazione / Ход	Tensión de alimentación / Operating voltage / Tension de service / Betriebsspannung / Tensione di alimentazione / Напряжение источника питания	Potencia requerida / Required power / Puissance requise / Benötigte Leistung / Potenza richiesta / требуемая мощность
EFU5-50-30	AFU2-45-40	(2x) GFU-7.5	(2x) TRA-7.5	480 V	95 kVA
EFU5L-50-30				3 ph 60 Hz	95 kVA

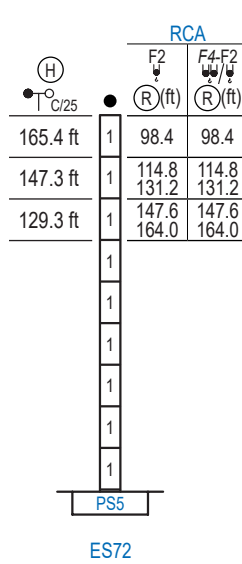
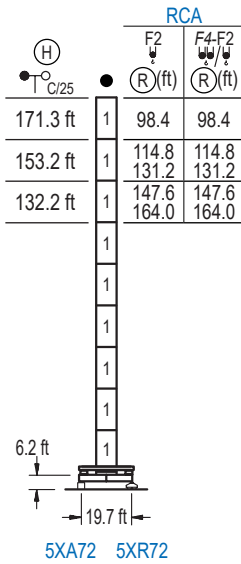
Opzionale / Optional / En option / Kaufoption / Opzionale / Опционально

*

ALTURAS DE TORRE

Tower height / Hauteurs de tour / Turmhöhen / Altezza della torre / Высота башни

∅ 6.6 ft



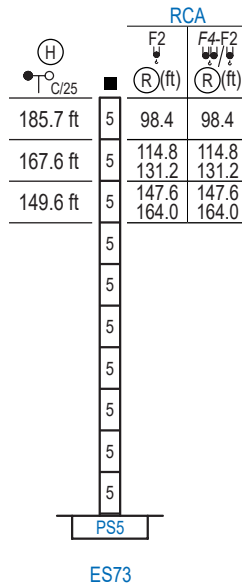
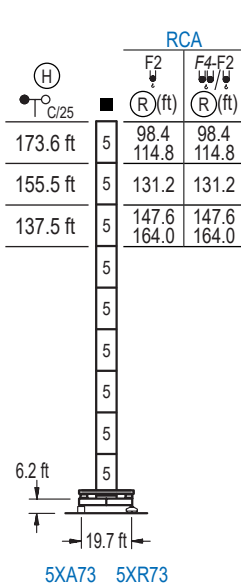
n°	Ref.	∅	h
1	S25	6.6	18.0

1x S25 = 1x S25M

ALTURAS DE TORRE

Tower height / Hauteurs de tour / Turmhöhen / Altezza della torre / Высота башни

∅ 8.2 ft



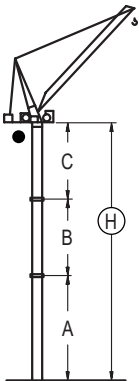
n°	Ref.	∅	h
1	S35	8.2	18.0

1x S35 = 1x S35M

GRÚA ARRIOSTRADA

Braced crane / Grue à entretoisement / Abgespannter Kran / Gru ancorata / Нарастиваемый кран

∅ 6.6 ft



RCA (H) C/25	5XA72					
	∅ F2	164.0 / 147.6	131.2 / 114.8	98.4		
∅ F4-F2	164.0 / 147.6	131.2 / 114.8	98.4			
A max	96.5	114.5	132.5			
A min	96.5	96.5	96.5			
B max	-	-	72.2	-	90.2	
B min	-	-	72.2	-	72.2	
C max	92.8	-	110.9	92.8	128.9	110.9
H max	189.3	-	225.4	279.5	261.5	333.7

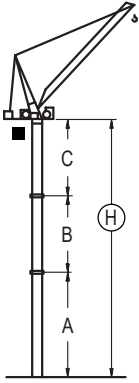
RCA (H) C/25	ES72					
	∅ F2	164.0 / 147.6	131.2 / 114.8	98.4		
∅ F4-F2	164.0 / 147.6	131.2 / 114.8	98.4			
A max	90.6	108.6	126.6			
A min	90.6	90.6	108.6			
B max	-	-	72.2	-	90.2	
B min	-	-	72.2	-	72.2	
C max	92.8	-	110.9	92.8	128.9	110.9
H max	183.4	-	219.5	273.6	255.6	327.8

Otras zonas de viento, alturas superiores, arriostramientos o trepado interno consultar / Other wind zones, additional hook heights, tie frames or internal climbing on request / Autres zones de vent, des hauteurs supplémentaires, entretoisements ou grues avec cage de télescopage intérieure, sur demande / Andere Windzonen, weitere Hakenhöhen, Abspannungen zum Gebäude oder Klettern im Gebäude auf Anfrage / Per zone con velocità del vento particolari, altezze superiori, ancoraggi o rampante in cavedito, consultare il fabbricante / При других ветренных зонах, при большой высоте, привязках к зданию или наращивании крана внутри здания проконсультируйтесь с нами

GRÚA ARRIOSTRADA

Braced crane / Grue à entretoisement / Abgespannter Kran / Gru ancorata / Наращиваемый кран

∅ 8.2 ft



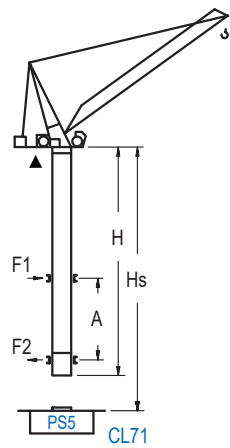
RCA (H) C/25	5XA73			
Ψ F2	164.0 / 147.6	131.2	114.8 / 98.4	
⊗/⊗ F4-F2	164.0 / 147.6	131.2	114.8 / 98.4	
A max	96.5	114.5	132.5	
A min	78.4	78.4	78.4	
B max	-	72.2	-	108.3
B min	-	54.1	-	54.1
C max	113.2	113.2	131.2	113.2
H max	209.6	281.8	245.7	317.9
			281.8	372.0

RCA (H) C/25	ES73			
Ψ F2	164.0 / 147.6	131.2 / 114.8	98.4	
⊗/⊗ F4-F2	164.0 / 147.6	131.2 / 114.8	98.4	
A max	108.6	126.6	144.7	
A min	72.5	72.5	72.5	
B max	-	72.2	-	108.3
B min	-	54.1	-	54.1
C max	113.2	113.2	131.2	113.2
H max	221.8	294.0	257.9	330.1
			294.0	384.2

GRÚA TREPADORA

Internal climbing crane / Grue avec cage de télescope intérieure / Kran mit klettern im Gebäude / Gru in rampante in cavedio / Кран с самоподъемом

∅ 5.2 ft



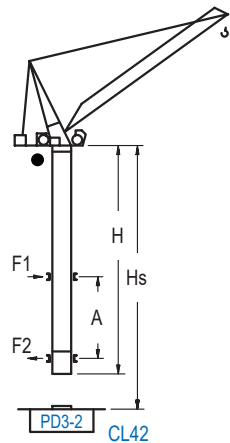
RCA (H) C/25	F2 ⊗ (ft)	F4-F2 ⊗/⊗ (ft)	Hs < 1,150 ft	
			A max (ft)	A min (ft)
140.1 ft (7x S15 + CLS15-08)	98.4 114.8	98.4 114.8	64.3	45.9
128.6 ft (S15-2 + 6x S15 + CLS15-08)	131.2	131.2	55.1	42.7
122.0 ft (6x S15 + CLS15-08)	147.6		55.1	45.9
117.1 ft (2x S15-2 + 5x S15 + CLS15-08)		147.6	46.3	45.9
104.0 ft (5x S15 + CLS15-08)	164.0	164.0	46.3	42.7

n°	Ref.	∅	h
	S15	5.2	18.0
	S15-2	5.2	6.6
	CLS15-08	5.2	10.2
1x S15 = 1x S15M			

GRÚA TREPADORA

Internal climbing crane / Grue avec cage de télescope intérieure / Kran mit klettern im Gebäude / Gru in rampante in cavedio / Кран с самоподъемом

∅ 6.6 ft



RCA (H) C/25	F2 ⊗ (ft)	F4-F2 ⊗/⊗ (ft)	Hs < 1,150 ft	
			A max (ft)	A min (ft)
190.3 ft (2x S25-2 + 4x S25 + TD23A + 4x D23A + CLD23A-12)	98.4	98.4	82.0	36.1
177.2 ft (4x S25 + TD23A + 4x D23A + CLD23A-12)	114.8	114.8	82.0	32.8
172.2 ft (2x S25-2 + 3x S25 + TD23A + 4x D23A + CLD23A-12)	131.2	131.2	73.2	36.1
159.1 ft (3x S25 + TD23A + 4x D23A + CLD23A-12)	147.6	147.6	73.2	32.8
154.2 ft (2x S25-2 + 2x S25 + TD23A + 4x D23A + CLD23A-12)	164.0	164.0	64.3	36.1

n°	Ref.	∅	h
	S25	6.6	18.0
	S25-2	6.6	6.6
	TD23A	6.6	18.0
	D23A	6.6	18.0
	CLD23A-12	6.6	11.2
1x S25 = 1x S25M			

Otras zonas de viento, alturas superiores, arriostamientos o trepado interno consultar / Other wind zones, additional hook heights, tie frames or internal climbing on request / Autres zones de vent, des hauteurs supplémentaires, entretoisements ou grues avec cage de télescope intérieure, sur demande / Andere Windzonen, weitere Hakenhöhen, Abspannungen zum Gebäude oder Klettern im Gebäude auf Anfrage / Per zone con velocità del vento particolari, altezze superiori, ancoraggi o rampante in cavedio, consultare il fabbricante / При других ветренных зонах, при большой высоте, привязках к зданию или наращивании крана внутри здания проконсультируйтесь с нами