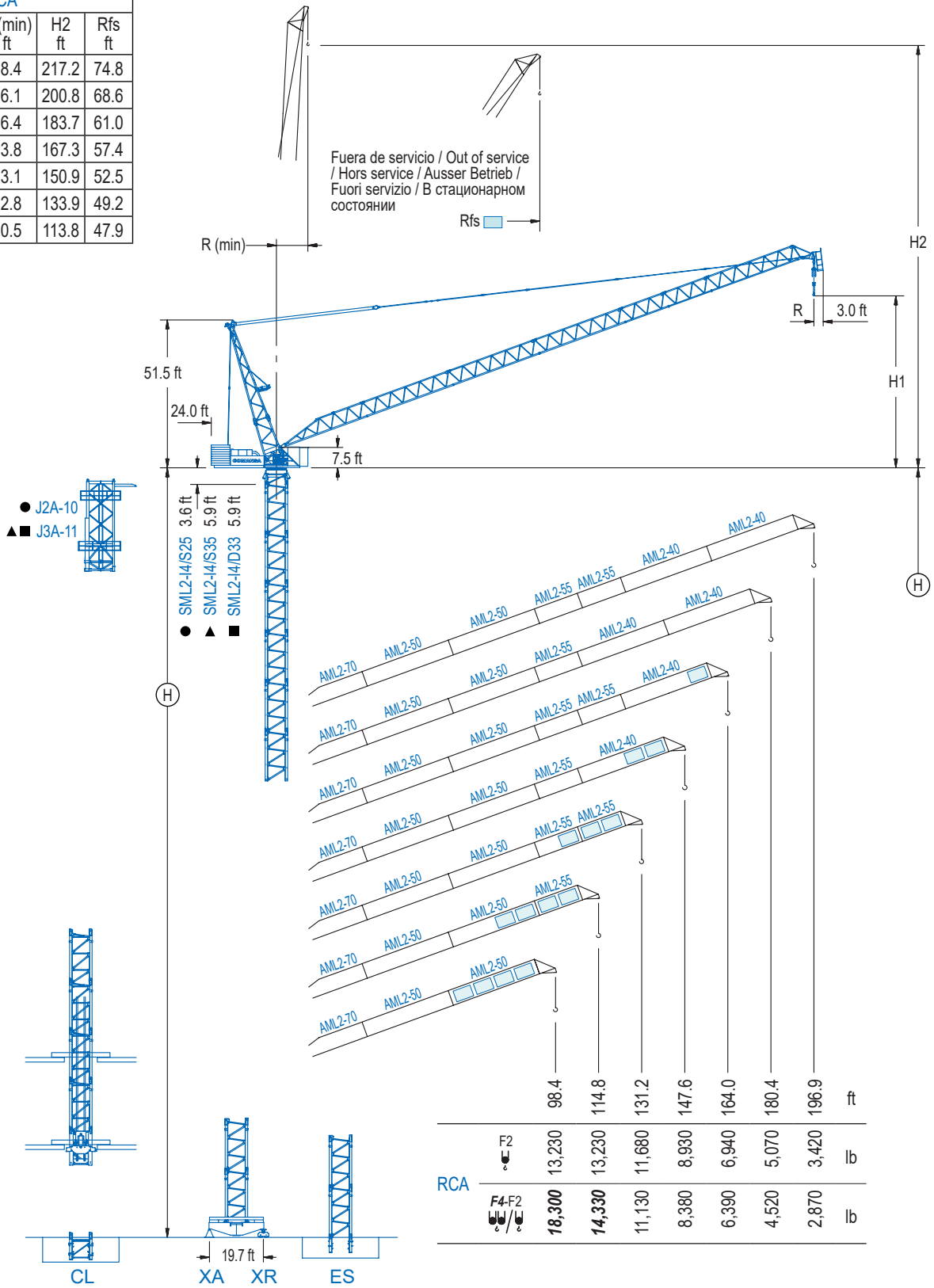


RCA				
R (max) ft	H1 ft	R (min) ft	H2 ft	Rfs ft
196.9	67.6	18.4	217.2	74.8
180.4	63.6	16.1	200.8	68.6
164.0	59.7	16.4	183.7	61.0
147.6	55.8	13.8	167.3	57.4
131.2	51.8	13.1	150.9	52.5
114.8	47.9	12.8	133.9	49.2
98.4	34.8	10.5	113.8	47.9



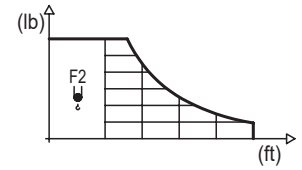
LCL Series

DIAGRAMA DE CARGAS

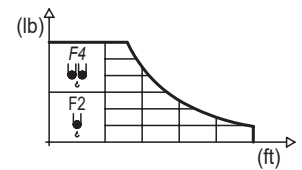
Load chart / Diagramme de charges / Lastdiagramm / Diagramma di carico / Диаграмма распределения нагрузки

RCA

R	13,230 lb	32.8	49.2	65.6	82.0	98.4	114.8	131.2	147.6	164.0	180.4	196.9	↔ (ft) ↓ (lb)
196.9	93.5				13,230	12,040	9,130	7,230	5,890	4,870	4,080	3,420	
180.4	106.6					13,230	11,570	9,130	7,410	6,130	5,070		
164.0	116.5						13,230	10,630	8,550	6,940			
147.6	119.8							13,230	11,200	8,930			
131.2	123.4								13,230	11,680			
114.8	114.8									13,230			
98.4	98.4										13,230		



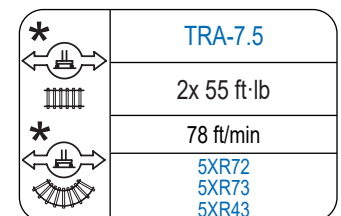
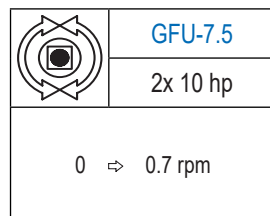
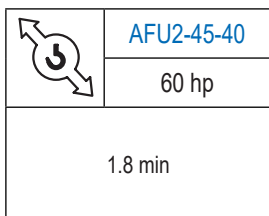
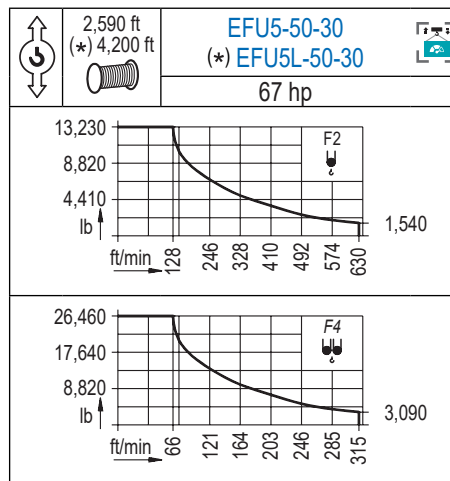
R	26,460 lb	13,230 lb	32.8	49.2	65.6	82.0	98.4	114.8	131.2	147.6	164.0	180.4	196.9	↔ (ft) ↓ (lb)
196.9	44.3	70.2	26,460	22,350	14,530	10,580	8,180	6,570	5,420	4,560	3,880	3,330	2,870	
180.4	66.3	96.1			26,460	17,530	12,740	9,830	7,890	6,480	5,400	4,520		
164.0	68.9	104.3			26,460	19,550	14,550	11,400	9,260	7,650	6,390			
147.6	70.2	109.9			26,460	20,660	15,630	12,390	10,120	8,380				
131.2	73.2	117.1			26,460	22,310	17,090	13,650	11,130					
114.8	76.8				26,460	23,920	18,210	14,330						
98.4	77.1				26,460	24,140	18,300							



Datos válidos hasta 262 ft de altura de torre. Para alturas mayores consultar / Valid data up to 262 ft of tower height. Additional heights on request / Données valables jusqu'à 262 ft de la hauteur de tour. Pour des autres hauteurs, merci de nous consulter / Gültige Daten bis zu 262 ft Turmhöhe. Bei mehr Höhe nachfragen / Dati validi per altezza massima 262 ft di torre. Per altezze superiori consultare Comansa / Допустимые данные до 262 фут высоты крана. Для более высоких высот консультируйтесь

MECANISMOS

Mechanisms / Mécanismes / Antriebe / Meccanismi / Механизмы



Elevación / Hoist / Levage / Hub / Sollevamento / Тип механизма (подъем)	Abatimiento / Luffing / Relevage / Einziehen / Brandeggio / Складывание	Giro / Slewing / Rotation / Drehbewegung / Rotazione / Поворот	Traslación / Travel / Translation / Verfahrbewegung / Traslazione / Ход	Tensión de alimentación / Operating voltage / Tension de service / Betriebsspannung / Tensione di alimentazione / Напряжение источника питания	Potencia requerida / Required power / Puissance requise / Benötigte Leistung / Potenza richiesta / требуемая мощность
EFU5-50-30	AFU2-45-40	(2x) GFU-7.5	(2x) TRA-7.5	480 V	95 kVA
EFU5L-50-30				3 ph 60 Hz	95 kVA

Opcional / Optional / En option / Kaufoption / Opzionale / Опционально

*

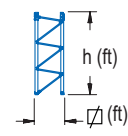
ALTURAS DE TORRE

Tower height / Hauteurs de tour / Turmhöhen / Altezza della torre / Высота башни

∅ 6.6 ft

		RCA		RCA	
(H)	C/25	F2 R(ft)	F4-F2 R(ft)	F2 R(ft)	F4-F2 R(ft)
172.2 ft	1	98.4	98.4	98.4	98.4
154.2 ft	1	114.8	114.8	114.8	114.8
136.2 ft	1	147.6	147.6	131.2	131.2
118.1 ft	1	164.0	164.0	147.6	147.6
	1	180.4	180.4	164.0	164.0
	1	196.9	196.9	180.4	180.4
	1			196.9	196.9

		RCA	
(H)	C/25	F2 R(ft)	F4-F2 R(ft)
166.3 ft	1	98.4	98.4
148.3 ft	1	114.8	114.8
130.2 ft	1	147.6	147.6
112.2 ft	1	164.0	164.0
	1	180.4	180.4
	1	196.9	196.9



n°	Ref.	∅	h
1	S25	6.6	18.0

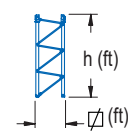
1x S25 = 1x S25M

ALTURAS DE TORRE

Tower height / Hauteurs de tour / Turmhöhen / Altezza della torre / Высота башни

∅ 8.2 ft

		RCA		RCA		RCA		RCA	
(H)	C/25	F2 R(ft)	F4-F2 R(ft)	F2 R(ft)	F4-F2 R(ft)	F2 R(ft)	F4-F2 R(ft)	F2 R(ft)	F4-F2 R(ft)
174.5 ft	5	98.4	98.4	98.4	98.4	204.7 ft	7	98.4	98.4
156.5 ft	5	114.8	114.8	114.8	114.8	186.7 ft	7	114.8	114.8
138.5 ft	5	131.2	131.2	131.2	131.2	168.6 ft	7	131.2	131.2
120.4 ft	5	147.6	147.6	147.6	147.6	150.6 ft	7	147.6	147.6
	5	164.0	164.0	164.0	164.0	132.5 ft	7	164.0	164.0
	5	180.4	180.4	180.4	180.4		7	180.4	180.4
	5	196.9	196.9	196.9	196.9		7	196.9	196.9



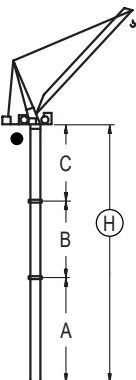
n°	Ref.	∅	h
5	S35	8.2	18.0
7	D33	8.2	18.0

1x S35 = 1x S35M
1x D33 = 1x D33M

GRÚA ARRIOSTRADA

Braced crane / Grue à entretoisement / Abgespannter Kran / Gru ancorata / Нарастиваемый кран

∅ 6.6 ft



RCA (H) C/25		5XA72			
F2		196.9 / 180.4	164.0 / 147.6	131.2 / 114.8	98.4
F4-F2		196.9 / 180.4	164.0 / 147.6	131.2 / 114.8	98.4
A max		-	96.5	114.5	132.5
A min		-	96.5	96.5	96.5
B max		-	-	72.2	90.2
B min		-	-	72.2	90.2
C max		-	93.8	111.9	129.9
H max		-	190.3	226.4	280.5

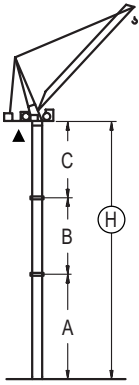
RCA (H) C/25		ES72			
F2		196.9 / 180.4	164.0 / 147.6	131.2 / 114.8	98.4
F4-F2		196.9 / 180.4	164.0 / 147.6	131.2 / 114.8	98.4
A max		-	90.6	108.6	126.6
A min		-	90.6	108.6	108.6
B max		-	-	72.2	90.2
B min		-	-	72.2	72.2
C max		-	93.8	111.9	129.9
H max		-	184.4	220.5	274.6

Otras zonas de viento, alturas superiores, arriostramientos o trepado interno consultar / Other wind zones, additional hook heights, tie frames or internal climbing on request / Autres zones de vent, des hauteurs supplémentaires, entretoisements ou grues avec cage de télescopage intérieure, sur demande / Andere Windzonen, weitere Hakenhöhen, Abspannungen zum Gebäude oder Klettern im Gebäude auf Anfrage / Per zone con velocità del vento particolari, altezze superiori, ancoraggi o rampante in cavedio, consultare il fabbricante / При других ветренных зонах, при большой высоте, привязках к зданию или наращивании крана внутри здания проконсультируйтесь с нами

GRÚA ARRIOSTRADA

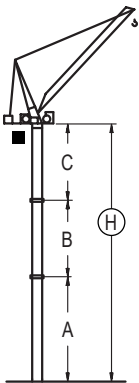
Braced crane / Grue à entretoisement / Abgespannter Kran / Gru ancorata / Нарациваемый кран

∅ 8.2 ft



RCA (H) C/25		5XA73							
R	ψF2	196.9		180.4 / 164.0		147.6 / 131.2		114.8 / 98.4	
	ψ/ψ F4-F2	196.9		180.4 / 164.0		147.6 / 131.2		114.8 / 98.4	
A max	A min	-		96.5		114.5		132.5	
		-		96.5		96.5		96.5	
B max	B min	-	-	-	72.2	-	72.2	-	90.2
		-	-	-	72.2	-	72.2	-	72.2
C max		-	-	96.1	96.1	114.2	114.2	132.2	114.2
H max		-	-	192.6	264.8	228.7	300.9	264.8	336.9

RCA (H) C/25		ES73							
R	ψF2	196.9 / 180.4		164.0 / 147.6		131.2 / 114.8		98.4	
	ψ/ψ F4-F2	196.9 / 180.4		164.0 / 147.6		131.2 / 114.8		98.4	
A max	A min	90.6		108.6		126.6		144.7	
		90.6		90.6		90.6		90.6	
B max	B min	-	72.2	-	72.2	-	90.2	-	108.3
		-	72.2	-	72.2	-	72.2	-	72.2
C max		96.1	96.1	114.2	114.2	132.2	114.2	150.3	132.2
H max		186.7	258.9	222.8	294.9	258.9	331.0	294.9	385.2



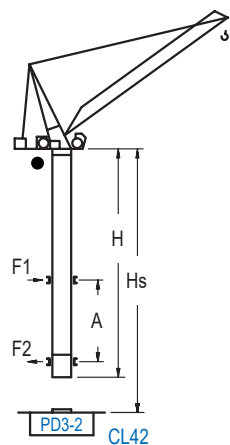
RCA (H) C/25		5XA43							
R	ψF2	196.9		180.4 / 164.0		147.6 / 131.2		114.8 / 98.4	
	ψ/ψ F4-F2	196.9		180.4 / 164.0		147.6 / 131.2		114.8 / 98.4	
A max	A min	78.4		96.5		114.5		132.5	
		78.4		78.4		78.4		78.4	
B max	B min	-	72.2	-	72.2	-	90.2	-	108.3
		-	54.1	-	54.1	-	54.1	-	72.2
C max		114.2	114.2	114.2	114.2	132.2	114.2	150.3	132.2
H max		192.6	264.8	222.4	294.6	246.7	318.9	282.8	373.0

RCA (H) C/25		ES43							
R	ψF2	196.9 / 180.4		164.0 / 147.6		131.2 / 114.8		98.4	
	ψ/ψ F4-F2	196.9 / 180.4		164.0 / 147.6		131.2 / 114.8		98.4	
A max	A min	108.6		126.6		144.7		162.7	
		72.5		72.5		72.5		72.5	
B max	B min	-	72.2	-	90.2	-	108.3	-	108.3
		-	54.1	-	54.1	-	72.2	-	72.2
C max		114.2	114.2	132.2	114.2	150.3	132.2	150.3	150.3
H max		222.8	294.9	258.9	331.0	294.9	385.2	313.0	421.3

GRÚA TREPADORA

Internal climbing crane / Grue avec cage de télescage intérieure / Kran mit klettern im Gebäude / Gru in rampante in cavedio / Кран с самоподъемом

∅ 6.6 ft



RCA (H) C/25	F2 (R) (ft)	F4-F2 (R) (ft)	Hs < 1,150 ft	
			A max (ft)	A min (ft)
195.2 ft (5x S25 + TD23A + 4x D23A + CLD23A-12)	98.4	98.4	82.0	36.1
183.7 ft (S25-2 + 4x S25 + TD23A + 4x D23A + CLD23A-12)	114.8	114.8	82.0	36.1
177.2 ft (4x S25 + TD23A + 4x D23A + CLD23A-12)	131.2	131.2	82.0	36.1
165.7 ft (S25-2 + 3x S25 + TD23A + 4x D23A + CLD23A-12)	147.6	147.6	73.2	36.1
159.1 ft (3x S25 + TD23A + 4x D23A + CLD23A-12)	164.0	164.0	73.2	36.1
147.6 ft (S25-2 + 2x S25 + TD23A + 4x D23A + CLD23A-12)	180.4	180.4	64.3	36.1
141.1 ft (2x S25 + TD23A + 4x D23A + CLD23A-12)	196.9	196.9	64.3	36.1

n°	Ref.	∅	h
	S25	6.6	18.0
	S25-2	6.6	6.6
	TD23A	6.6	18.0
	D23A	6.6	18.0
	CLD23A-12	6.6	11.2
1x S25 = 1x S25M			

Otras zonas de viento, alturas superiores, arriostamientos o trepado interno consultar / Other wind zones, additional hook heights, tie frames or internal climbing on request / Autres zones de vent, des hauteurs supplémentaires, entretoisements ou grues avec cage de télescage intérieure, sur demande / Andere Windzonen, weitere Hakenhöhen, Abspannungen zum Gebäude oder Klettern im Gebäude auf Anfrage / Per zone con velocità del vento particolari, altezze superiori, ancoraggi o rampante in cavedio, consultare il fabbricante / При других ветренных зонах, при большой высоте, привязках к зданию или наращивании крана внутри здания проконсультируйтесь с нами