

| RCA | | | | |
|---------------|----------|---------------|----------|-----------|
| R (max) ft | H1 ft | R (min) ft | H2 ft | Rfs ft |
| 196.9 | 67.6 | 18.4 | 217.2 | 74.8 |
| 180.4 | 63.6 | 16.1 | 200.8 | 68.6 |
| 164.0 | 59.7 | 16.4 | 183.7 | 61.0 |
| 147.6 | 55.8 | 13.8 | 167.3 | 57.4 |
| 131.2 | 51.8 | 13.1 | 150.9 | 52.5 |
| 114.8 | 47.9 | 12.8 | 133.9 | 49.2 |
| 98.4 | 34.8 | 10.5 | 113.8 | 47.9 |

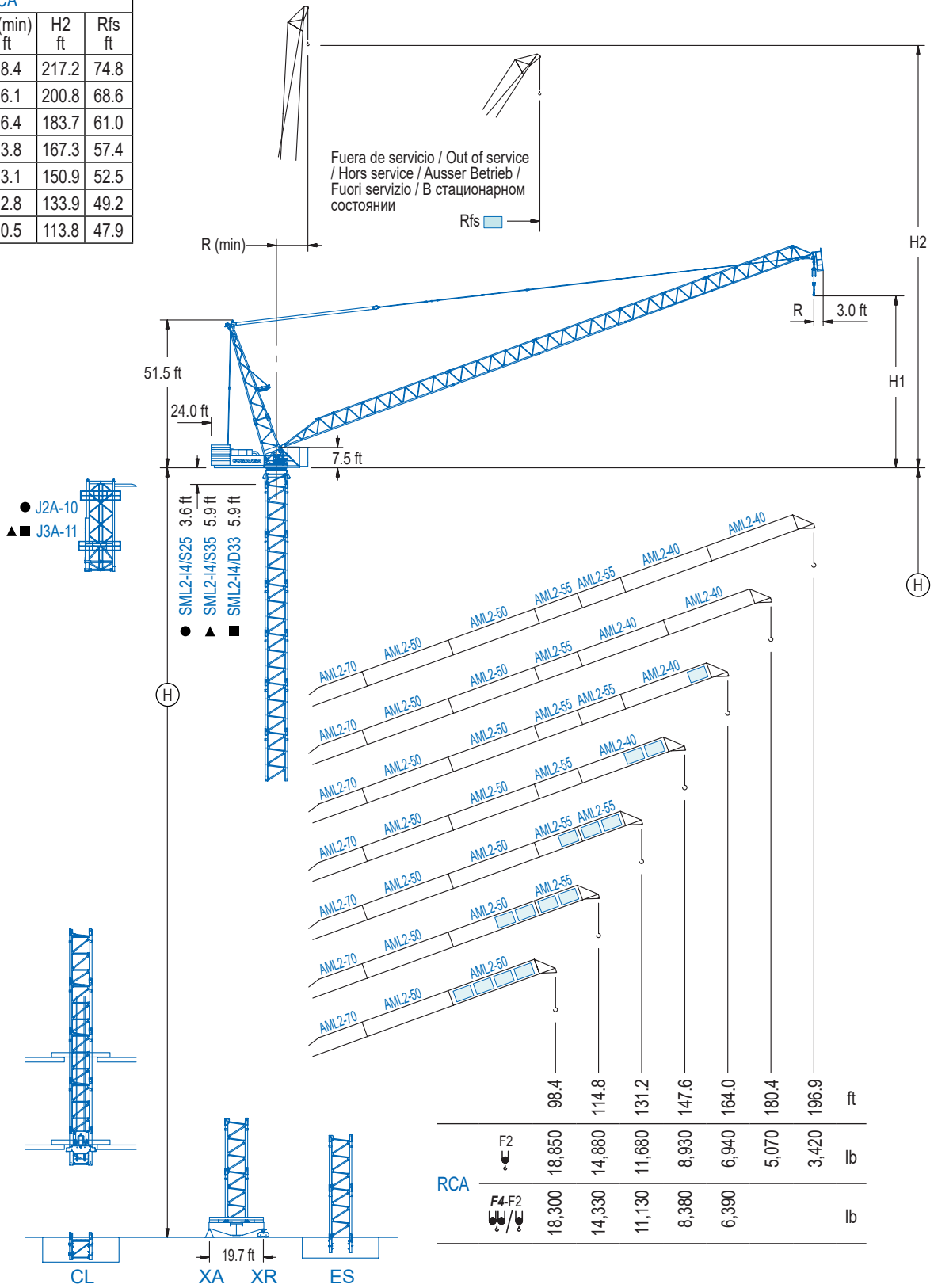
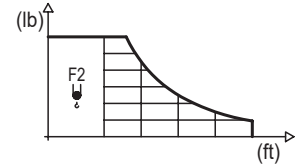


DIAGRAMA DE CARGAS

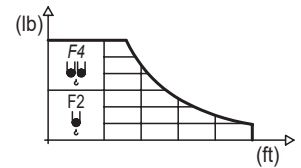
Load chart / Diagramme de charges / Lastdiagramm / Diagramma di carico / Диаграмма распределения нагрузки

RCA

| | | | | | | | | | | | | | | |
|-------|-----------|--|------|------|--------|--------|--------|--------|-------|-------|-------|-------|-------|------------------|
| R | 19,840 lb | | 32.8 | 49.2 | 65.6 | 82.0 | 98.4 | 114.8 | 131.2 | 147.6 | 164.0 | 180.4 | 196.9 | ↔ (ft) ↓ (lb) |
| 196.9 | 77.1 | | | | 19,840 | 17,440 | 12,240 | 9,260 | 7,300 | 5,930 | 4,890 | 4,100 | 3,420 | |
| 180.4 | 81.4 | | | | 19,840 | 19,550 | 14,180 | 10,960 | 8,800 | 7,230 | 6,040 | 5,070 | | |
| 164.0 | 85.0 | | | | 19,840 | 15,670 | 12,300 | 10,010 | 8,290 | 6,940 | | | | |
| 147.6 | 89.2 | | | | 19,840 | 17,000 | 13,380 | 10,850 | 8,930 | | | | | |
| 131.2 | 90.9 | | | | 19,840 | 17,720 | 14,240 | 11,680 | | | | | | |
| 114.8 | 94.5 | | | | 19,840 | 18,720 | 14,880 | | | | | | | |
| 98.4 | 95.1 | | | | 19,840 | 18,850 | | | | | | | | |



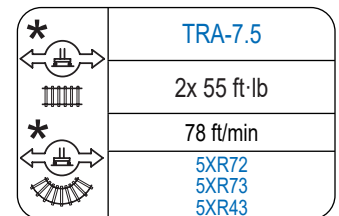
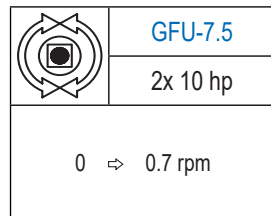
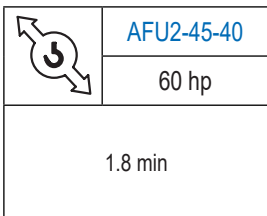
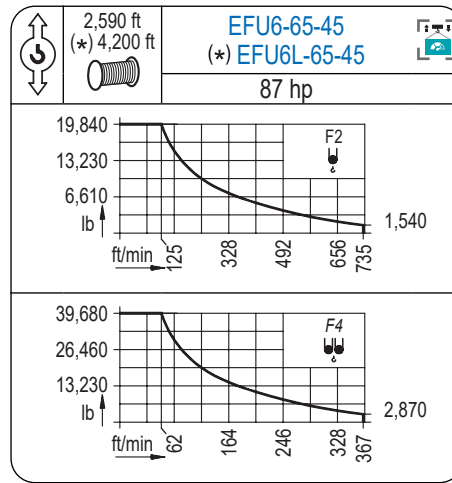
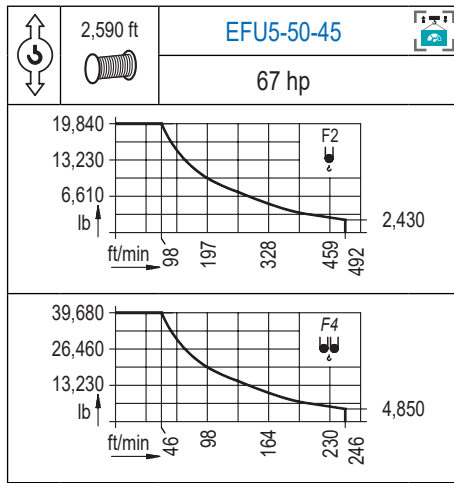
| | | | | | | | | | | | | | | |
|-------|-----------|-----------|--|--------|--------|--------|--------|--------|--------|--------|-------|-------|--|------------------|
| R | 39,680 lb | 19,840 lb | | 32.8 | 49.2 | 65.6 | 82.0 | 98.4 | 114.8 | 131.2 | 147.6 | 164.0 | | ↔ (ft) ↓ (lb) |
| | | | | | | | | | | | | | | |
| 164.0 | 40.4 | 67.9 | | 39,680 | 30,250 | 20,790 | 15,650 | 12,430 | 10,230 | 8,620 | 7,390 | 6,390 | | |
| 147.6 | 38.4 | 70.5 | | 39,680 | 29,830 | 21,490 | 16,670 | 13,510 | 11,310 | 9,660 | 8,380 | | | |
| 131.2 | 44.3 | 80.4 | | 39,680 | 35,030 | 25,070 | 19,360 | 15,650 | 13,070 | 11,130 | | | | |
| 114.8 | 49.2 | 87.6 | | | 39,680 | 28,040 | 21,490 | 17,280 | 14,330 | | | | | |
| 98.4 | 54.1 | 92.5 | | | 39,680 | 30,890 | 23,210 | 18,300 | | | | | | |



Datos válidos hasta 262 ft de altura de torre. Para alturas mayores consultar / Valid data up to 262 ft of tower height. Additional heights on request / Données valables jusqu'à 262 ft de la hauteur de tour. Pour des autres hauteurs, merci de nous consulter / Gültige Daten bis zu 262 ft Turmhöhe. Bei mehr Höhe nachfragen / Dati validi per altezza massima 262 ft di torre. Per altezze superiori consultare Comansa / Допустимые данные до 262 фут высоты крана. Для более высоких высот консультируйтесь

MECANISMOS

Mechanisms / Mécanismes / Antriebe / Meccanismi / Механизмы



| Elevación / Hoist / Levage / Hub / Sollevamento / Тип механизма (подъем) | Abatimiento / Luffing / Relevage / Einziehen / Brändeggio / Складывание | Giro / Slewing / Rotation / Drehbewegung / Rotazione / Поворот | Traslación / Travel / Translation / Verfahrbewegung / Traslazione / Ход | Tensión de alimentación / Operating voltage / Tension de service / Betriebsspannung / Tensione di alimentazione / Напряжение источника питания | Potencia requerida / Required power / Puissance requise / Benötigte Leistung / Potenza richiesta / требуемая мощность |
|--|---|--|---|--|---|
| EFU5-50-45 | | | | 480 V | 95 kVA |
| EFU6-65-45 | AFU2-45-40 | (2x) GFU-7.5 | (2x) TRA-7.5 | 3 ph | 110 kVA |
| EFU6L-65-45 | | | | 60 Hz | 110 kVA |

Opcional / Optional / En option / Kaufoption / Opzionale / Опционально

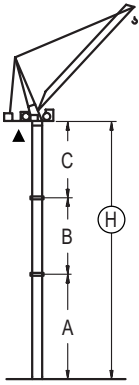
*

LCL Series

GRÚA ARRIOSTRADA

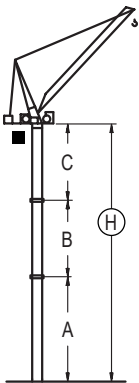
Braced crane / Grue à entretoisement / Abgespannter Kran / Gru ancorata / Нарациваемый кран

∅ 8.2 ft



| RCA (H) C/25 | | 5XA73 | | | | | | | | |
|--------------|-----------|-------|---------------|---------------|--------------|-------|-------|-------|-------|--|
| Ⓡ | ψ F2 | 196.9 | 180.4 / 164.0 | 147.6 / 131.2 | 114.8 / 98.4 | | | | | |
| | ψ/ψ F4-F2 | | 164.0 | 147.6 / 131.2 | 114.8 / 98.4 | | | | | |
| A max | | - | 96.5 | 114.5 | 132.5 | | | | | |
| A min | | - | 96.5 | 96.5 | 96.5 | | | | | |
| B max | | - | - | 72.2 | - | 72.2 | - | 90.2 | | |
| B min | | - | - | 72.2 | - | 72.2 | - | 72.2 | | |
| C max | | - | - | 96.1 | 96.1 | 114.2 | 114.2 | 132.2 | 114.2 | |
| H max | | - | - | 192.6 | 264.8 | 228.7 | 300.9 | 264.8 | 336.9 | |

| RCA (H) C/25 | | ES73 | | | | | | | | |
|--------------|-----------|---------------|---------------|---------------|-------|-------|-------|-------|-------|--|
| Ⓡ | ψ F2 | 196.9 / 180.4 | 164.0 / 147.6 | 131.2 / 114.8 | 98.4 | | | | | |
| | ψ/ψ F4-F2 | | 164.0 / 147.6 | 131.2 / 114.8 | 98.4 | | | | | |
| A max | | 90.6 | 108.6 | 126.6 | 144.7 | | | | | |
| A min | | 90.6 | 90.6 | 90.6 | 90.6 | | | | | |
| B max | | - | 72.2 | - | 72.2 | - | 90.2 | - | 108.3 | |
| B min | | - | 72.2 | - | 72.2 | - | 72.2 | - | 72.2 | |
| C max | | 96.1 | 96.1 | 114.2 | 114.2 | 132.2 | 114.2 | 150.3 | 132.2 | |
| H max | | 186.7 | 258.9 | 222.8 | 294.9 | 258.9 | 331.0 | 294.9 | 385.2 | |



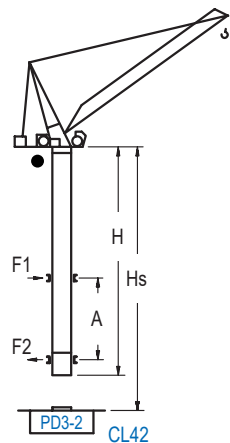
| RCA (H) C/25 | | 5XA43 | | | | | | | |
|--------------|-----------|-------|---------------|---------------|--------------|-------|-------|-------|-------|
| Ⓡ | ψ F2 | 196.9 | 180.4 / 164.0 | 147.6 / 131.2 | 114.8 / 98.4 | | | | |
| | ψ/ψ F4-F2 | | 164.0 | 147.6 / 131.2 | 114.8 / 98.4 | | | | |
| A max | | 78.4 | 96.5 | 114.5 | 132.5 | | | | |
| A min | | 78.4 | 78.4 | 78.4 | 78.4 | | | | |
| B max | | - | 72.2 | - | 90.2 | - | 108.3 | | |
| B min | | - | 54.1 | - | 54.1 | - | 72.2 | | |
| C max | | 114.2 | 114.2 | 132.2 | 114.2 | 150.3 | 132.2 | | |
| H max | | 192.6 | 264.8 | 222.4 | 294.6 | 246.7 | 318.9 | 282.8 | 373.0 |

| RCA (H) C/25 | | ES43 | | | | | | | |
|--------------|-----------|---------------|---------------|---------------|-------|-------|-------|-------|-------|
| Ⓡ | ψ F2 | 196.9 / 180.4 | 164.0 / 147.6 | 131.2 / 114.8 | 98.4 | | | | |
| | ψ/ψ F4-F2 | | 164.0 / 147.6 | 131.2 / 114.8 | 98.4 | | | | |
| A max | | 108.6 | 126.6 | 144.7 | 162.7 | | | | |
| A min | | 72.5 | 72.5 | 72.5 | 72.5 | | | | |
| B max | | - | 72.2 | - | 90.2 | - | 108.3 | - | 108.3 |
| B min | | - | 54.1 | - | 54.1 | - | 72.2 | - | 72.2 |
| C max | | 114.2 | 114.2 | 132.2 | 114.2 | 150.3 | 132.2 | 150.3 | 150.3 |
| H max | | 222.8 | 294.9 | 258.9 | 331.0 | 294.9 | 385.2 | 313.0 | 421.3 |

GRÚA TREPADORA

Internal climbing crane / Grue avec cage de télescopage intérieure / Kran mit klettern im Gebäude / Gru in rampante in cavedio / Кран с самоподъемом

∅ 6.6 ft



| RCA (H) C/25 | F2 Ⓡ(ft) | F4-F2 Ⓡ(ft) | Hs < 1,150 ft | |
|---|-------------|----------------|---------------|---------------|
| | | | A max (ft) | A min (ft) |
| 195.2 ft (5x S25 + TD23A + 4x D23A + CLD23A-12) | 98.4 | 98.4 | 82.0 | 36.1 |
| 183.7 ft (S25-2 + 4x S25 + TD23A + 4x D23A + CLD23A-12) | 114.8 | 114.8 | 82.0 | 36.1 |
| 177.2 ft (4x S25 + TD23A + 4x D23A + CLD23A-12) | 131.2 | 131.2 | 82.0 | 36.1 |
| 165.7 ft (S25-2 + 3x S25 + TD23A + 4x D23A + CLD23A-12) | 147.6 | 147.6 | 73.2 | 36.1 |
| 159.1 ft (3x S25 + TD23A + 4x D23A + CLD23A-12) | 164.0 | 164.0 | 73.2 | 36.1 |
| 147.6 ft (S25-2 + 2x S25 + TD23A + 4x D23A + CLD23A-12) | 180.4 | | 64.3 | 36.1 |
| 141.1 ft (2x S25 + TD23A + 4x D23A + CLD23A-12) | 196.9 | | 64.3 | 36.1 |

| n° | Ref. | ∅ | h |
|------------------|-----------|-----|------|
| | S25 | 6.6 | 18.0 |
| | S25-2 | 6.6 | 6.6 |
| | TD23A | 6.6 | 18.0 |
| | D23A | 6.6 | 18.0 |
| | CLD23A-12 | 6.6 | 11.2 |
| 1x S25 = 1x S25M | | | |

Otras zonas de viento, alturas superiores, arriostamientos o trepado interno consultar / Other wind zones, additional hook heights, tie frames or internal climbing on request / Autres zones de vent, des hauteurs supplémentaires, entretoisements ou grues avec cage de télescopage intérieure, sur demande / Andere Windzonen, weitere Hakenhöhen, Abspannungen zum Gebäude oder Klettern im Gebäude auf Anfrage / Per zone con velocità del vento particolari, altezze superiori, ancoraggi o rampante in cavedio, consultare il fabbricante / При других ветренных зонах, при большой высоте, привязках к зданию или наращивании крана внутри здания проконсультируйтесь с нами