

RCA				
R (max) ft	H1 ft	R (min) ft	H2 ft	Rfs ft
196.9	67.9	18.7	217.5	70.5
180.4	64.0	16.4	201.1	66.6
164.0	60.0	17.1	184.1	59.1
147.6	56.1	14.1	167.7	55.4
131.2	52.2	13.5	150.9	51.5
114.8	48.2	13.5	134.2	50.2
98.4	35.1	10.8	114.2	47.9

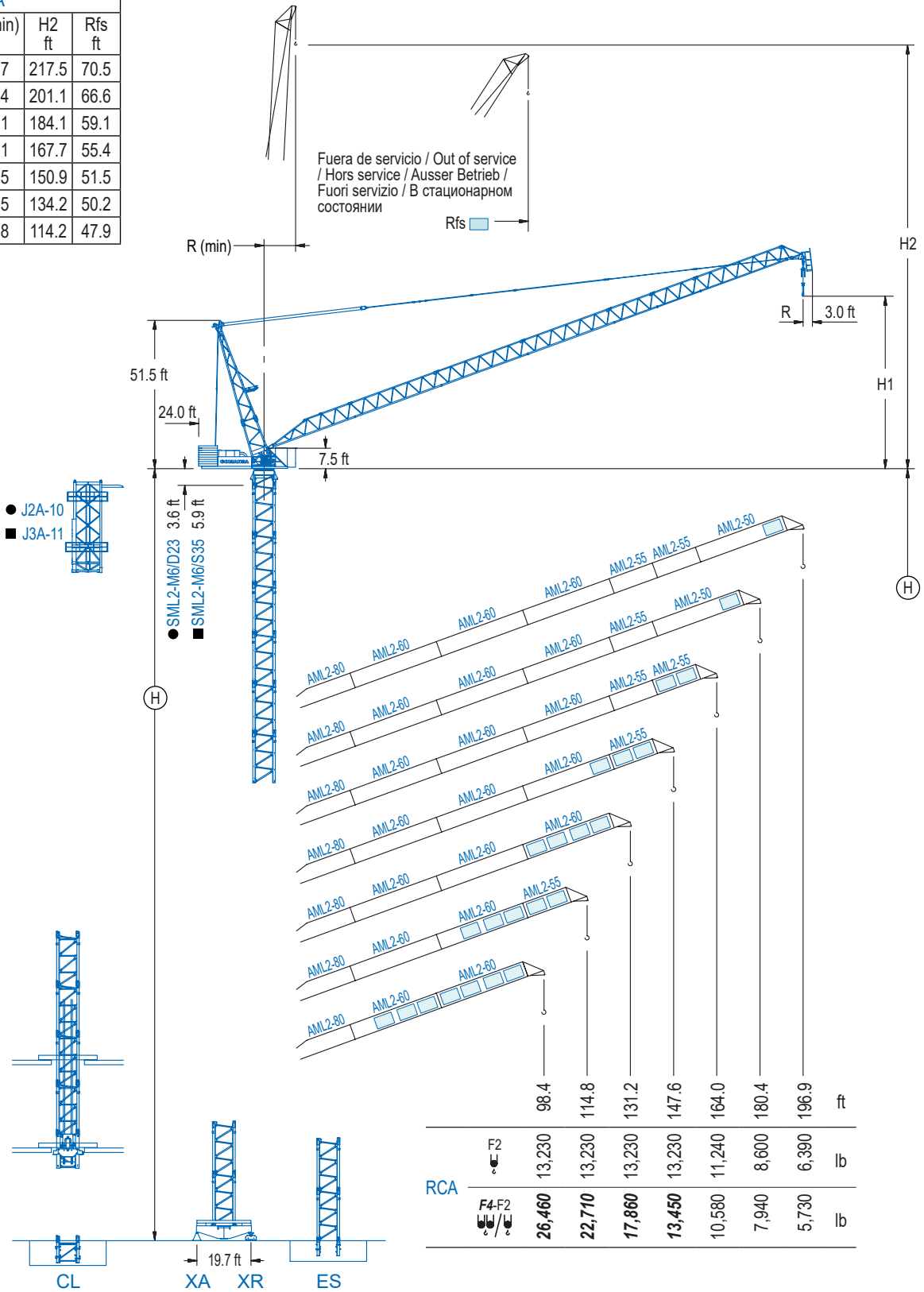
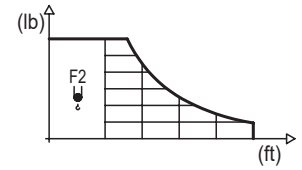

LCL Series

DIAGRAMA DE CARGAS

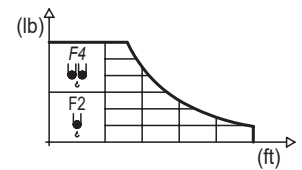
Load chart / Diagramme de charges / Lastdiagramm / Diagramma di carico / Диаграмма распределения нагрузки

RCA

R	13,230 lb	32.8	49.2	65.6	82.0	98.4	114.8	131.2	147.6	164.0	180.4	196.9	↔ (ft) ↓ (lb)
196.9	135.5							13,230	11,240	9,240	7,670	6,390	
180.4	141.4							13,230	12,300	10,250	8,600		
164.0	147.0							13,230	13,140	11,240			
147.6	147.6								13,230				
131.2	131.2									13,230			
114.8	114.8										13,230		
98.4	98.4											13,230	



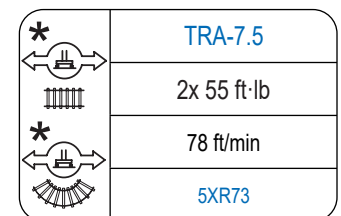
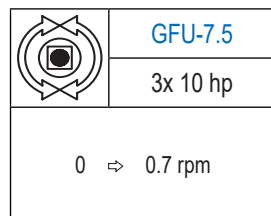
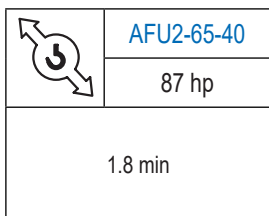
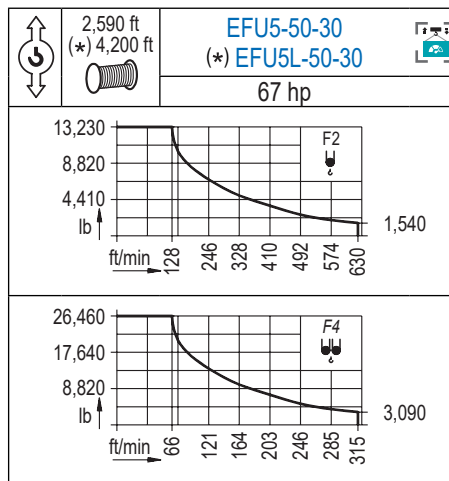
R	26,460 lb	13,230 lb	32.8	49.2	65.6	82.0	98.4	114.8	131.2	147.6	164.0	180.4	196.9	↔ (ft) ↓ (lb)
196.9	86.3	124.0				26,460	20,280	15,210	11,990	9,740	8,090	6,810	5,730	
180.4	89.2	133.9				26,460	22,200	17,060	13,670	11,270	9,440	7,940		
164.0	92.2	152.9				26,460	23,810	18,670	15,170	12,610	10,580			
147.6	95.1					26,460	25,110	19,890	16,230	13,450				
131.2	98.1					26,460	26,340	21,450	17,860					
114.8	101.4					26,460	22,710							
98.4	98.4					26,460								



Datos válidos hasta 262 ft de altura de torre. Para alturas mayores consultar / Valid data up to 262 ft of tower height. Additional heights on request / Données valables jusqu'à 262 ft de la hauteur de tour. Pour des autres hauteurs, merci de nous consulter / Gültige Daten bis zu 262 ft Turmhöhe. Bei mehr Höhe nachfragen / Dati validi per altezza massima 262 ft di torre. Per altezze superiori consultare Comansa / Допустимые данные до 262 фут высоты крана. Для более высоких высот консультируйтесь

MECANISMOS

Mechanisms / Mécanismes / Antriebe / Meccanismi / Механизмы



Elevación / Hoist / Levage / Hub / Sollevamento / Тип механизма (подъем)	Abatimiento / Luffing / Relevage / Einziehen / Brandeggio / Складывание	Giro / Slewing / Rotation / Drehbewegung / Rotazione / Поворот	Traslación / Travel / Translation / Verfahrbewegung / Traslazione / Ход	Tensión de alimentación / Operating voltage / Tension de service / Betriebsspannung / Tensione di alimentazione / Напряжение источника питания	Potencia requerida / Required power / Puissance requise / Benötigte Leistung / Potenza richiesta / требуемая мощность
EFU5-50-30	AFU2-65-40	(3x) GFU-7.5	(2x) TRA-7.5	480 V	115 kVA
EFU5L-50-30				3 ph 60 Hz	115 kVA

Opcional / Optional / En option / Kaufoption / Opzionale / Опционально
*

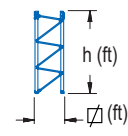
ALTURAS DE TORRE

Tower height / Hauteurs de tour / Turmhöhen / Altezza della torre / Высота башни

∅ 8.2 ft

		RCA		RCA	
(H)	C/25	F2 (R)(ft)	F4-F2 (R)(ft)	F2 (R)(ft)	F4-F2 (R)(ft)
156.5 ft	1	98.4 / 114.8 131.2	98.4 / 114.8 131.2	98.4 114.8	98.4 114.8
138.5 ft	1	147.6 / 164.0 180.4	147.6 / 164.0 180.4	131.2 / 147.6 164.0	131.2 / 147.6 164.0
120.4 ft	1	196.9	196.9	180.4 196.9	180.4 196.9

		RCA	
(H)	C/25	F2 (R)(ft)	F4-F2 (R)(ft)
168.6 ft	1	98.4 114.8	98.4 114.8
150.6 ft	1	131.2 / 147.6 164.0	131.2 / 147.6 164.0
132.5 ft	1	180.4 196.9	180.4 196.9



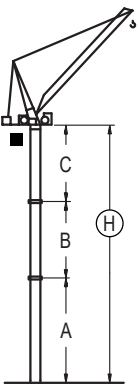
n°	Ref.	∅	h
1	S35	8.2	18.0

1x S35 = 1x S35M

GRÚA ARRIOSTRADA

Braced crane / Grue à entretoisement / Abgespannter Kran / Gru ancorata / Нарастиваемый кран

∅ 8.2 ft



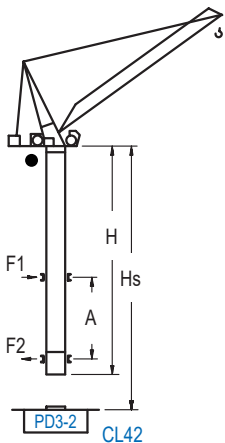
RCA (H) C/25		5XA73			
F2		196.9	180.4 / 164.0 / 147.6	131.2 / 114.8 / 98.4	
F4-F2		196.9	180.4 / 164.0 / 147.6	131.2 / 114.8 / 98.4	
A max		-	96.5	114.5	
A min		-	96.5	96.5	
B max		-	72.2	72.2	
B min		-	72.2	72.2	
C max		-	114.2	114.2	
H max		-	210.6	282.8	300.9

RCA (H) C/25		ES73			
F2		196.9 / 180.4	164.0 / 147.6 / 131.2	114.8 / 98.4	
F4-F2		196.9 / 180.4	164.0 / 147.6 / 131.2	114.8 / 98.4	
A max		90.6	108.6	126.6	
A min		90.6	90.6	90.6	
B max		-	72.2	72.2	90.2
B min		-	72.2	72.2	72.2
C max		114.2	96.1	114.2	132.2
H max		204.7	258.9	222.8	294.9

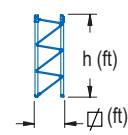
GRÚA TREPADORA

Internal climbing crane / Grue avec cage de télescopage intérieure / Kran mit klettern im Gebäude / Gru in rampante in cavedio / Кран с самоподъемом

∅ 6.6 ft



RCA (H) C/25	F2 (R)(ft)	F4-F2 (R)(ft)	Hs < 1,150 ft	
			A max (ft)	A min (ft)
159.1 ft (4x D23 + 4x D23A + CLD23A-12)	98.4 / 114.8 131.2 / 147.6	98.4 / 114.8 131.2 / 147.6	73.2	36.1
141.1 ft (3x D23 + 4x D23A + CLD23A-12)	164.0 180.4	164.0 180.4	64.3	32.8
123.0 ft (2x D23 + 4x D23A + CLD23A-12)	196.9	196.9	55.1	32.8



n°	Ref.	∅	h
D23		6.6	18.0
D23A		6.6	6.6
CLD23A-12		6.6	11.2

Otras zonas de viento, alturas superiores, arriostramientos o trepado interno consultar / Other wind zones, additional hook heights, tie frames or internal climbing on request / Autres zones de vent, des hauteurs supplémentaires, entretoisements ou grues avec cage de télescopage intérieure, sur demande / Andere Windzonen, weitere Hakenhöhen, Abspannungen zum Gebäude oder Klettern im Gebäude auf Anfrage / Per zone con velocità del vento particolari, altezze superiori, ancoraggi o rampante in cavedio, consultare il fabbricante / При других ветренных зонах, при большой высоте, привязках к зданию или наращивании крана внутри здания проконсультируйтесь с нами

