

RCA				
R (max) ft	H1 ft	R (min) ft	H2 ft	Rfs ft
196.9	67.9	18.7	217.5	70.5
180.4	64.0	16.4	201.1	66.6
164.0	60.0	17.1	184.1	59.1
147.6	56.1	14.1	167.7	55.4
131.2	52.2	13.5	150.9	51.5
114.8	48.2	13.5	134.2	50.2
98.4	35.1	10.8	114.2	47.9

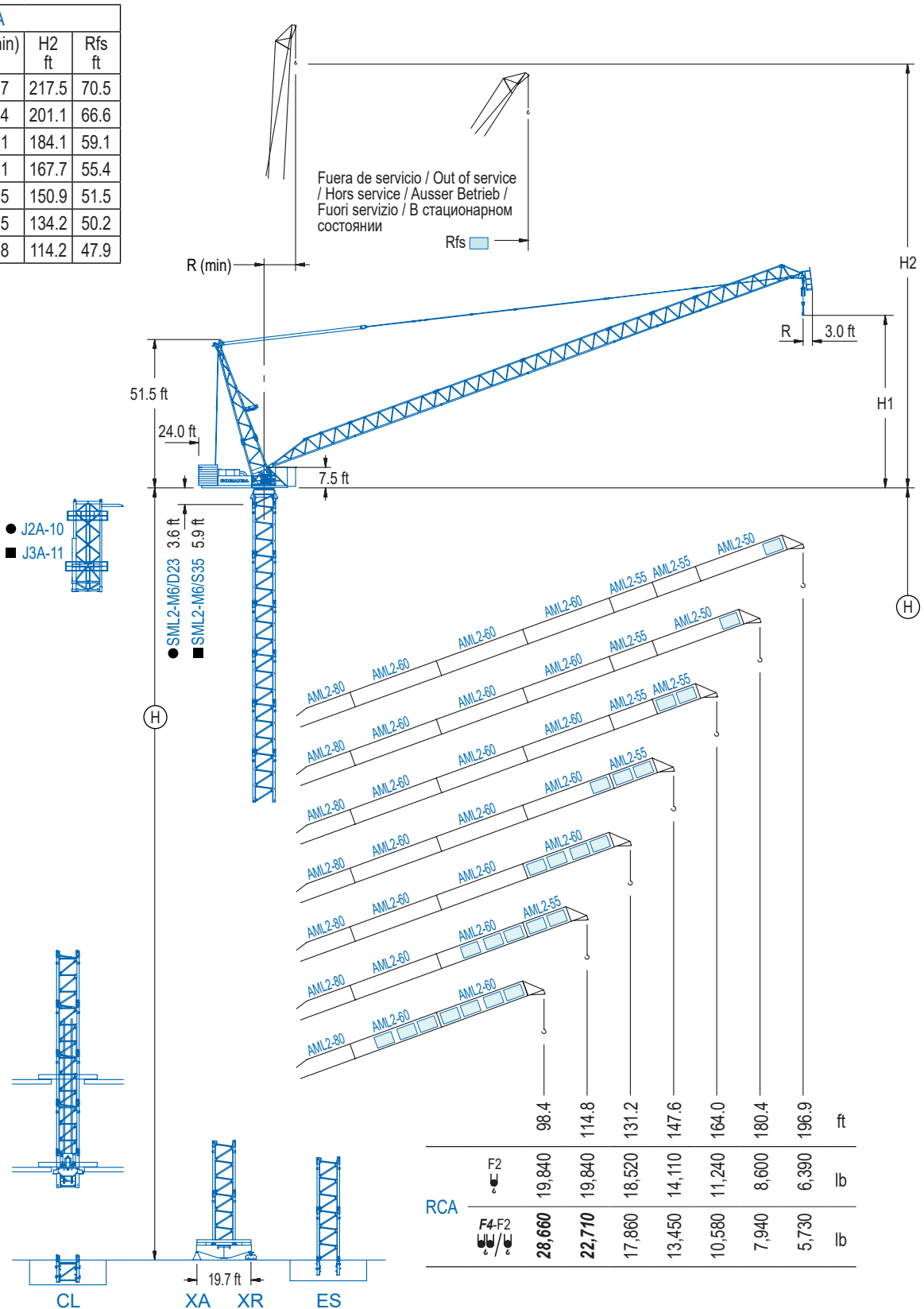
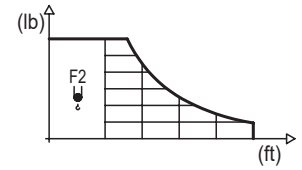


DIAGRAMA DE CARGAS

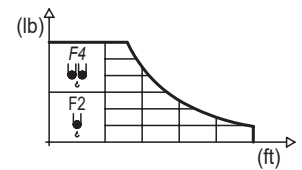
Load chart / Diagramme de charges / Lastdiagramm / Diagramma di carico / Диаграмма распределения нагрузки

RCA

R	19,840 lb		32.8	49.2	65.6	82.0	98.4	114.8	131.2	147.6	164.0	180.4	196.9	↔ (ft) ↓ (lb)
196.9	107.9						19,840	17,590	13,690	11,050	9,130	7,630	6,390	
180.4	111.9						19,840	18,960	15,060	12,320	10,270	8,600		
164.0	115.8							19,840	16,270	13,450	11,240			
147.6	120.1							19,840	17,200	14,110				
131.2	124.3							19,840	18,520					
114.8	114.8							19,840						
98.4	98.4						19,840							



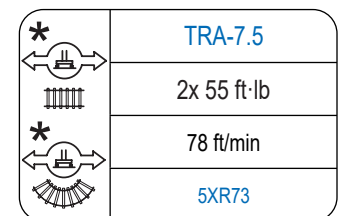
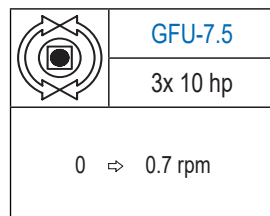
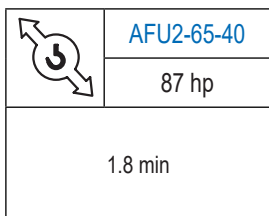
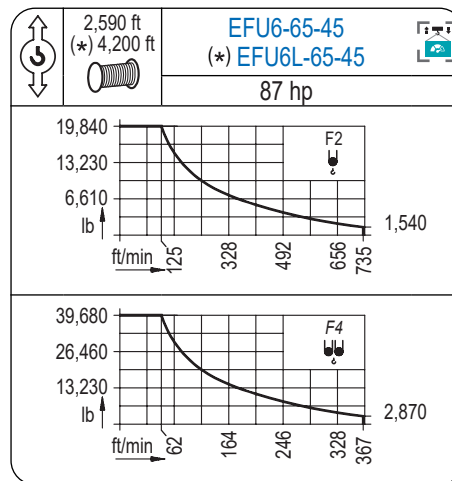
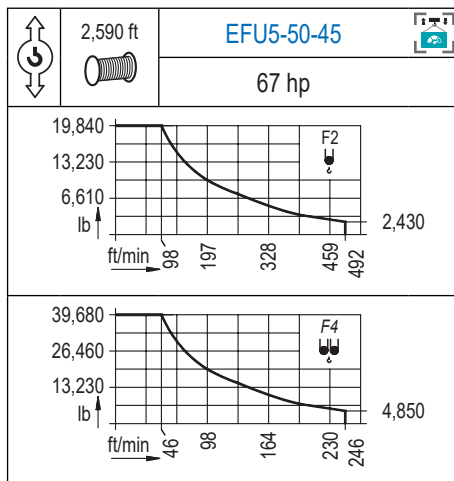
R	39,680 lb	19,840 lb		32.8	49.2	65.6	82.0	98.4	114.8	131.2	147.6	164.0	180.4	196.9	↔ (ft) ↓ (lb)
196.9	59.1	88.3		39,680	32,610	22,310	16,730	13,230	10,820	9,060	7,720	6,640	5,730		
180.4	60.7	95.5		39,680	34,960	24,820	19,030	15,300	12,680	10,710	9,190	7,940			
164.0	62.7	103.3		39,680	37,130	27,140	21,190	17,240	14,420	12,300	10,580				
147.6	65.6	110.6			39,680	29,320	23,060	18,850	15,810	13,450					
131.2	69.2	120.7			39,680	32,100	25,620	21,160	17,860						
114.8	69.9				39,680	33,180	27,050	22,710							
98.4	72.2				39,680	34,700	28,660								



Datos válidos hasta 262 ft de altura de torre. Para alturas mayores consultar / Valid data up to 262 ft of tower height. Additional heights on request / Données valables jusqu'à 262 ft de la hauteur de tour. Pour des autres hauteurs, merci de nous consulter / Gültige Daten bis zu 262 ft Turmhöhe. Bei mehr Höhe nachfragen / Dati validi per altezza massima 262 ft di torre. Per altezze superiori consultare Comansa / Допустимые данные до 262 фут высоты крана. Для более высоких высот консультируйтесь

MECANISMOS

Mechanisms / Mécanismes / Antriebe / Meccanismi / Механизмы



Elevación / Hoist / Levage / Hub / Sollevamento / Тип механизма (подъем)	Abatimiento / Luffing / Relevage / Einziehen / Brändeggio / Складывание	Giro / Slewing / Rotation / Drehbewegung / Rotazione / Поворот	Traslación / Travel / Translation / Verfahrbewegung / Traslazione / Ход	Tensión de alimentación / Operating voltage / Tension de service / Betriebsspannung / Tensione di alimentazione / Напряжение источника питания	Potencia requerida / Required power / Puissance requise / Benötigte Leistung / Potenza richiesta / требуемая мощность
EFU5-50-45				480 V	115 kVA
EFU6-65-45	AFU2-65-40	(3x) GFU-7.5	(2x) TRA-7.5	3 ph	130 kVA
EFU6L-65-45				60 Hz	130 kVA

Opcional / Optional / En option / Kaufoption / Opzionale / Опционально

*

LCL Series

ALTURAS DE TORRE

Tower height / Hauteurs de tour / Turmhöhen / Altezza della torre / Высота башни

∅ 8.2 ft

RCA

H (ft)	C/25	5XA73		5XR73	
		F2 (ft)	F4-F2 (ft)	F2 (ft)	F4-F2 (ft)
156.5	1	98.4 / 114.8 131.2	98.4 / 114.8 131.2	98.4 / 114.8 131.2	98.4 / 114.8 131.2
138.5	1	147.6 / 164.0 180.4	147.6 / 164.0 180.4	147.6 / 164.0 180.4	147.6 164.0
120.4	1	196.9	196.9	196.9	180.4
102.4	1				196.9

5XA73 5XR73

RCA

H (ft)	C/25	ES73	
		F2 (ft)	F4-F2 (ft)
168.6	1	98.4 / 114.8	98.4 / 114.8
150.6	1	131.2 / 147.6 164.0	131.2 / 147.6 164.0
132.5	1	180.4 / 196.9	180.4 / 196.9

ES73

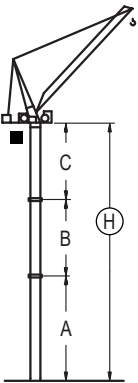
n°	Ref.	∅	h
1	S35	8.2	18.0

1x S35 = 1x S35M

GRÚA ARRIOSTRADA

Braced crane / Grue à entretoisement / Abgespannter Kran / Gru ancorata / Нарращиваемый кран

∅ 8.2 ft



RCA (H) C/25

	5XA73			
ψ F2	196.9	180.4 / 164.0 / 147.6	131.2 / 114.8 / 98.4	
⊗ ψ / ψ F4-F2	196.9	180.4 / 164.0 / 147.6	131.2 / 114.8 / 98.4	
A max	-	96.5	114.5	
A min	-	96.5	96.5	
B max	-	-	72.2	72.2
B min	-	-	72.2	72.2
C max	-	-	114.2	114.2
H max	-	-	210.6	282.8

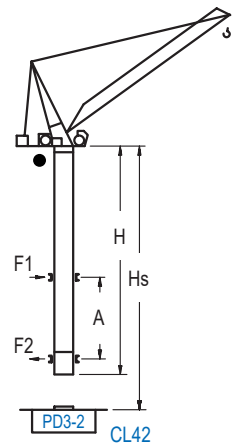
RCA (H) C/25

	ES73			
ψ F2	196.9 / 180.4	164.0 / 147.6 / 131.2	114.8 / 98.4	
⊗ ψ / ψ F4-F2	196.9 / 180.4	164.0 / 147.6 / 131.2	114.8 / 98.4	
A max	90.6	108.6	126.6	
A min	90.6	90.6	90.6	
B max	-	72.2	72.2	90.2
B min	-	72.2	72.2	72.2
C max	114.2	96.1	114.2	132.2
H max	204.7	258.9	222.8	294.9

GRÚA TREPADORA

Internal climbing crane / Grue avec cage de télescopage intérieure / Kran mit klettern im Gebäude / Gru in rampante in cavedio / Кран с самоподъемом

∅ 6.6 ft



RCA (H) C/25

H (ft)	F2 (ft)	F4-F2 (ft)	Hs < 1,150 ft	
			A max (ft)	A min (ft)
159.1 ft (4x D23 + 4x D23A + CLD23A-12)	98.4 / 114.8 131.2 / 147.6	98.4 / 114.8 131.2 / 147.6	73.2	36.1
141.1 ft (3x D23 + 4x D23A + CLD23A-12)	164.0 180.4	164.0 180.4	64.3	32.8
123.0 ft (2x D23 + 4x D23A + CLD23A-12)	196.9	196.9	55.1	32.8

n°	Ref.	∅	h
	D23	6.6	18.0
	D23A	6.6	18.0
	CLD23A-12	6.6	11.2

Otras zonas de viento, alturas superiores, arriostramientos o trepado interno consultar / Other wind zones, additional hook heights, tie frames or internal climbing on request / Autres zones de vent, des hauteurs supplémentaires, entretoisements ou grues avec cage de télescopage intérieure, sur demande / Andere Windzonen, weitere Hakenhöhen, Abspannungen zum Gebäude oder Klettern im Gebäude auf Anfrage / Per zone con velocità del vento particolari, altezze superiori, ancoraggi o rampante in cavedio, consultare il fabbricante / При других ветренных зонах, при большой высоте, привязках к зданию или наращивании крана внутри здания проконсультируйтесь с нами

