

RCA				
R (max) ft	H1 ft	R (min) ft	H2 ft	Rfs ft
196.9	67.9	18.7	217.2	70.5
180.4	64.0	16.4	200.8	66.6
164.0	60.4	17.1	184.1	59.1
147.6	56.4	14.1	167.3	55.4
131.2	52.2	13.5	150.6	51.5
114.8	48.2	13.5	133.9	50.2
98.4	44.0	11.2	117.1	47.9

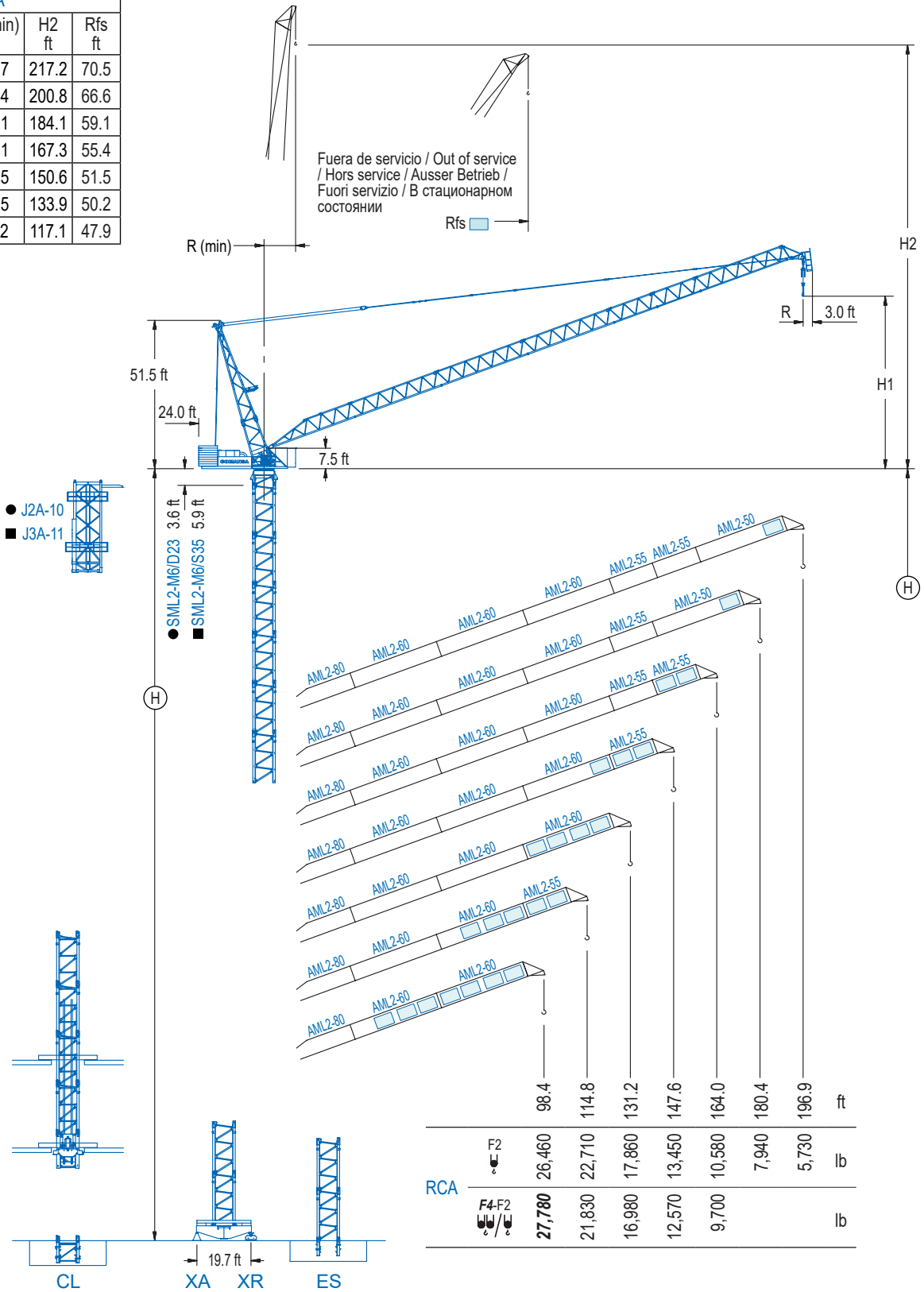
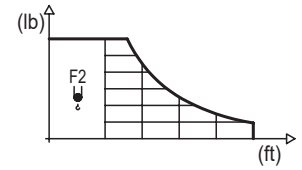

LCL Series

DIAGRAMA DE CARGAS

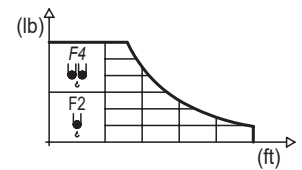
Load chart / Diagramme de charges / Lastdiagramm / Diagramma di carico / Диаграмма распределения нагрузки

RCA

R	26,460 lb		32.8	49.2	65.6	82.0	98.4	114.8	131.2	147.6	164.0	180.4	196.9	↔ (ft) ↓ (lb)
196.9	86.0					26,460	20,390	15,410	12,170	9,900	8,180	6,860	5,730	
180.4	88.9					26,460	22,180	17,130	13,760	11,330	9,460	7,940		
164.0	91.5					26,460	23,610	18,630	15,170	12,610	10,580			
147.6	94.8					26,460	25,000	19,860	16,230	13,450				
131.2	97.4					26,460	26,120	21,360	17,860					
114.8	101.0					26,460	22,710							
98.4	98.4					26,460								



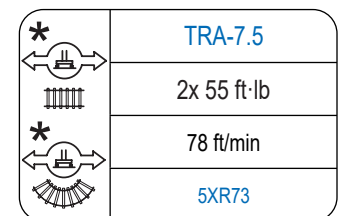
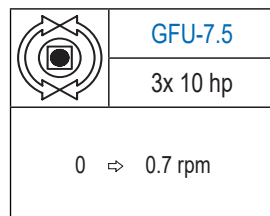
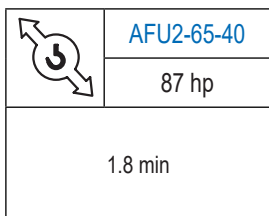
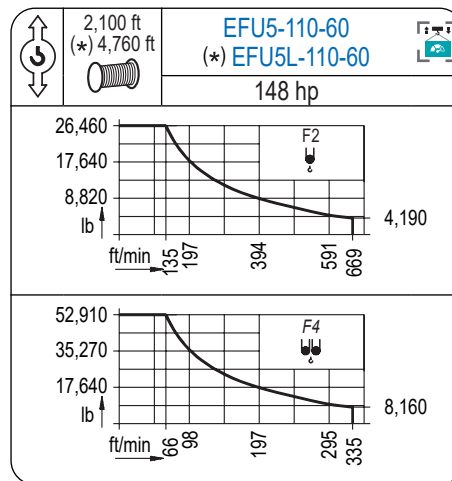
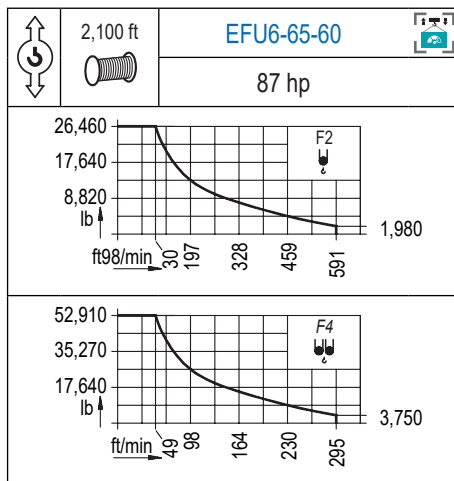
R	52,910 lb	26,460 lb		32.8	49.2	65.6	82.0	98.4	114.8	131.2	147.6	164.0	↔ (ft) ↓ (lb)
164.0	47.9	78.4	52,910	50,820	33,710	24,910	19,530	15,920	13,290	11,290	9,700		
147.6	50.2	84.0	52,910	36,660	27,340	21,560	17,640	14,770	12,570				
131.2	52.2	91.5	52,910	39,790	30,310	24,270	20,080	16,980					
114.8	52.5	97.1	52,910	41,160	32,010	26,040	21,830						
98.4	55.4	0.0	52,910	43,830	34,130	27,780							



Datos válidos hasta 262 ft de altura de torre. Para alturas mayores consultar / Valid data up to 262 ft of tower height. Additional heights on request / Données valables jusqu'à 262 ft de la hauteur de tour. Pour des autres hauteurs, merci de nous consulter / Gültige Daten bis zu 262 ft Turmhöhe. Bei mehr Höhe nachfragen / Dati validi per altezza massima 262 ft di torre. Per altezze superiori consultare Comansa / Допустимые данные до 262 фут высоты крана. Для более высоких высот консультируйтесь

MECANISMOS

Mechanisms / Mécanismes / Antriebe / Meccanismi / Механизмы



Elevación / Hoist / Levage / Hub / Sollevamento / Тип механизма (подъем)	Abatimiento / Luffing / Relevage / Einziehen / Brändeggio / Складывание	Giro / Slewing / Rotation / Drehbewegung / Rotazione / Поворот	Traslación / Travel / Translation / Verfahrbewegung / Traslazione / Ход	Tensión de alimentación / Operating voltage / Tension de service / Betriebsspannung / Tensione di alimentazione / Напряжение источника питания	Potencia requerida / Required power / Puissance requise / Benötigte Leistung / Potenza richiesta / требуемая мощность
EFU6-65-60				480 V	130 kVA
EFU5-110-60	AFU2-65-40	(3x) GFU-7.5	(2x) TRA-7.5	3 ph	175 kVA
EFU5L-110-60				60 Hz	175 kVA

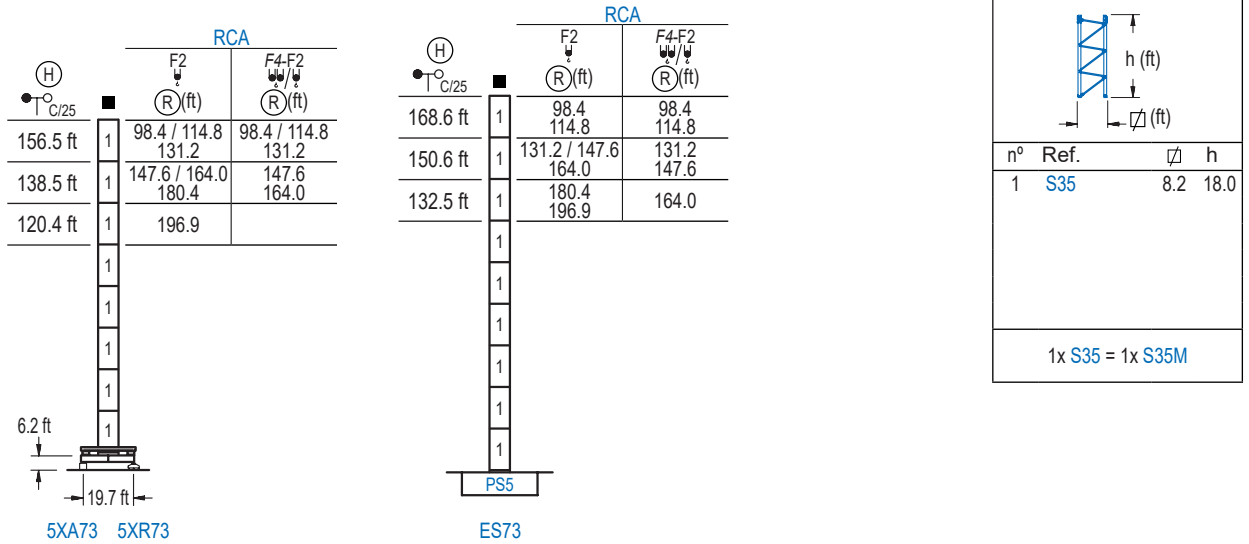
Opcional / Optional / En option / Kaufoption / Opzionale / Опционально

*

ALTURAS DE TORRE

Tower height / Hauteurs de tour / Turmhöhen / Altezza della torre / Высота башни

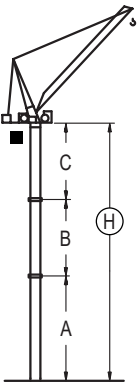
∅ 8.2 ft



GRÚA ARRIOSTRADA

Braced crane / Grue à entretoisement / Abgespannter Kran / Gru ancorata / Нарастиваемый кран

∅ 8.2 ft



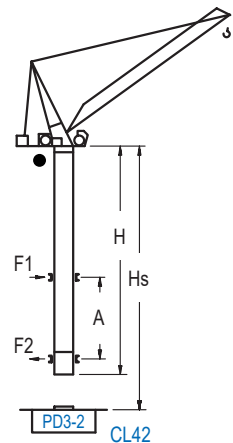
RCA (H) C/25		5XA73			
∅ F2	196.9	180.4 / 164.0	131.2 / 114.8	98.4	
(R)		164.0 / 147.6	131.2 / 114.8	98.4	
∅/∅ F4-F2					
A max	-	96.5	114.5		
A min	-	96.5	96.5		
B max	-	-	72.2	72.2	
B min	-	-	72.2	72.2	
C max	-	114.2	114.2	114.2	114.2
H max	-	210.6	282.8	228.7	300.9

RCA (H) C/25		ES73			
∅ F2	196.9 / 180.4	164.0 / 147.6	114.8 / 98.4		
(R)		131.2	114.8 / 98.4		
∅/∅ F4-F2	164.0	147.6 / 131.2	114.8 / 98.4		
A max	90.6	108.6	126.6		
A min	90.6	90.6	90.6		
B max	-	72.2	72.2	90.2	
B min	-	72.2	72.2	72.2	
C max	114.2	96.1	114.2	114.2	132.2
H max	204.7	258.9	222.8	294.9	331.0

GRÚA TREPADORA

Internal climbing crane / Grue avec cage de télescopage intérieure / Kran mit klettern im Gebäude / Gru in rampante in cavedio / Кран с самоподъемом

∅ 6.6 ft



RCA (H) C/25	F2 (R)(ft)	F4-F2 (R)(ft)	Hs < 1,150 ft	
			A max (ft)	A min (ft)
159.1 ft (4x D23 + 4x D23A + CLD23A-12)	98.4 / 114.8 131.2 / 147.6	98.4 / 114.8 131.2 / 147.6	73.2	36.1
141.1 ft (3x D23 + 4x D23A + CLD23A-12)	164.0 180.4	164.0	64.3	32.8
123.0 ft (2x D23 + 4x D23A + CLD23A-12)	196.9		55.1	32.8

n°	Ref.	∅	h
	D23	6.6	18.0
	D23A	6.6	18.0
	CLD23A-12	6.6	11.2

Otras zonas de viento, alturas superiores, arriostramientos o trepado interno consultar / Other wind zones, additional hook heights, tie frames or internal climbing on request / Autres zones de vent, des hauteurs supplémentaires, entretoisements ou grues avec cage de télescopage intérieure, sur demande / Andere Windzonen, weitere Hakenhöhen, Abspannungen zum Gebäude oder Klettern im Gebäude auf Anfrage / Per zone con velocità del vento particolari, altezze superiori, ancoraggi o rampante in cavedio, consultare il fabbricante / При других ветренных зонах, при большой высоте, привязках к зданию или наращивании крана внутри здания проконсультируйтесь с нами

