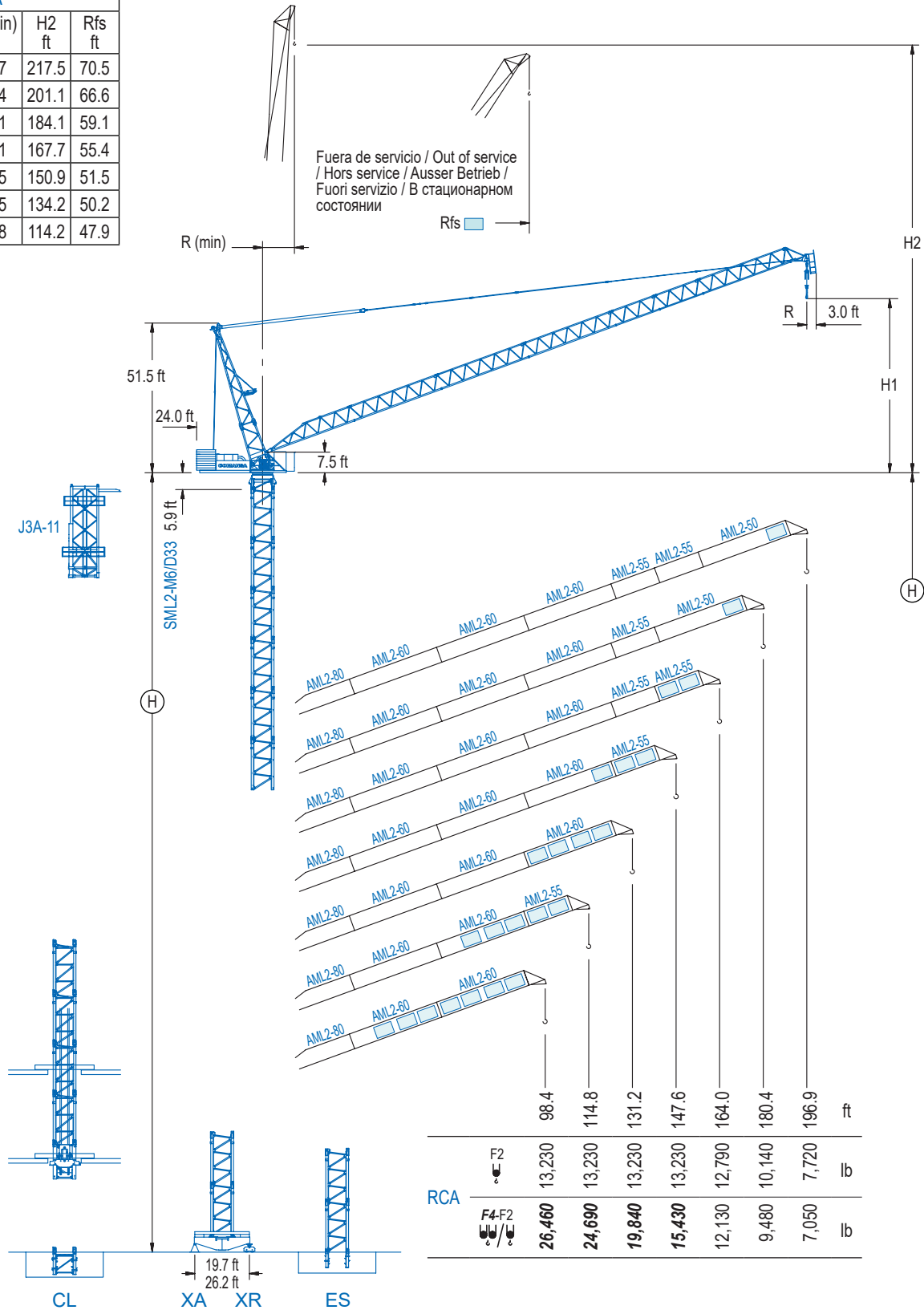


| RCA | | | | |
|---------------|----------|---------------|----------|-----------|
| R (max) ft | H1 ft | R (min) ft | H2 ft | Rfs ft |
| 196.9 | 67.9 | 18.7 | 217.5 | 70.5 |
| 180.4 | 64.0 | 16.4 | 201.1 | 66.6 |
| 164.0 | 60.0 | 17.1 | 184.1 | 59.1 |
| 147.6 | 56.1 | 14.1 | 167.7 | 55.4 |
| 131.2 | 52.2 | 13.5 | 150.9 | 51.5 |
| 114.8 | 48.2 | 13.5 | 134.2 | 50.2 |
| 98.4 | 35.1 | 10.8 | 114.2 | 47.9 |



| | | | | | | | | |
|-----|---------------|---------------|---------------|---------------|--------|--------|-------|----|
| | 98.4 | 114.8 | 131.2 | 147.6 | 164.0 | 180.4 | 196.9 | ft |
| F2 | 13,230 | 13,230 | 13,230 | 13,230 | 12,790 | 10,140 | 7,720 | lb |
| RCA | 26,460 | 24,690 | 19,840 | 15,430 | 12,130 | 9,480 | 7,050 | lb |

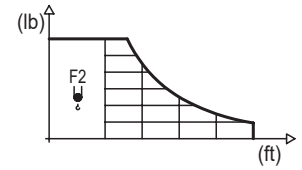
LCL Series

DIAGRAMA DE CARGAS

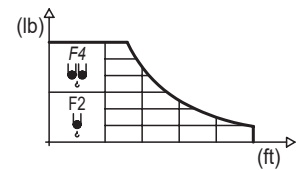
Load chart / Diagramme de charges / Lastdiagramm / Diagramma di carico / Диаграмма распределения нагрузки

RCA

| | | | | | | | | | | | | | | |
|-------|-----------|--|------|------|------|--------|------|--------|--------|--------|--------|--------|-------|------------------|
| R | 13,230 lb | | 32.8 | 49.2 | 65.6 | 82.0 | 98.4 | 114.8 | 131.2 | 147.6 | 164.0 | 180.4 | 196.9 | ↔ (ft) ↓ (lb) |
| 196.9 | 147.6 | | | | | | | | | 13,230 | 10,930 | 9,170 | 7,720 | |
| 180.4 | 152.6 | | | | | | | | | 13,230 | 11,840 | 10,140 | | |
| 164.0 | 159.1 | | | | | | | | | 13,230 | 12,790 | | | |
| 147.6 | 147.6 | | | | | | | | | 13,230 | | | | |
| 131.2 | 131.2 | | | | | | | | 13,230 | | | | | |
| 114.8 | 114.8 | | | | | | | 13,230 | | | | | | |
| 98.4 | 98.4 | | | | | 13,230 | | | | | | | | |



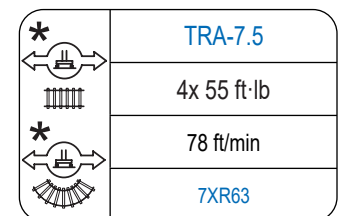
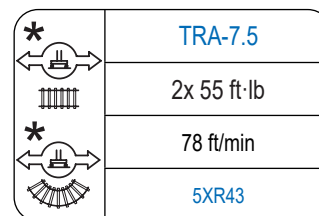
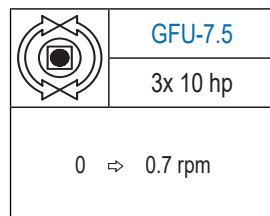
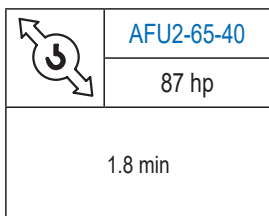
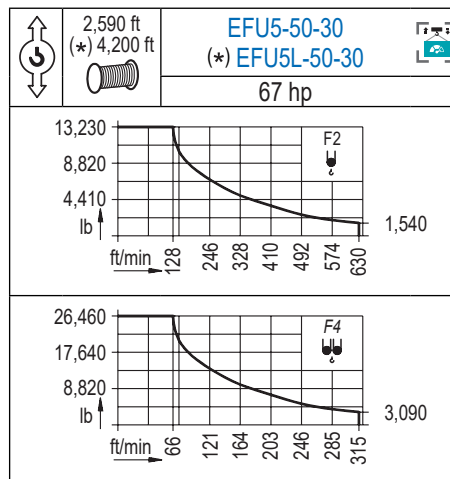
| | | | | | | | | | | | | | | | |
|-------|-----------|-----------|--|------|------|------|--------|--------|--------|--------|--------|--------|-------|-------|------------------|
| R | 26,460 lb | 13,230 lb | | 32.8 | 49.2 | 65.6 | 82.0 | 98.4 | 114.8 | 131.2 | 147.6 | 164.0 | 180.4 | 196.9 | ↔ (ft) ↓ (lb) |
| 196.9 | 91.9 | 136.5 | | | | | 26,460 | 23,280 | 17,720 | 14,150 | 11,640 | 9,770 | 8,290 | 7,050 | |
| 180.4 | 95.1 | 147.0 | | | | | 26,460 | 25,020 | 19,510 | 15,830 | 13,180 | 11,130 | 9,480 | | |
| 164.0 | 98.4 | 155.5 | | | | | 26,460 | 20,940 | 17,150 | 14,350 | 12,130 | | | | |
| 147.6 | 101.7 | | | | | | 26,460 | 22,270 | 18,410 | 15,430 | | | | | |
| 131.2 | 105.0 | | | | | | 26,460 | 23,610 | 19,840 | | | | | | |
| 114.8 | 108.3 | | | | | | 26,460 | 24,690 | | | | | | | |
| 98.4 | 98.4 | | | | | | 26,460 | | | | | | | | |



Datos válidos hasta 262 ft de altura de torre. Para alturas mayores consultar / Valid data up to 262 ft of tower height. Additional heights on request / Données valables jusqu'à 262 ft de la hauteur de tour. Pour des autres hauteurs, merci de nous consulter / Gültige Daten bis zu 262 ft Turmhöhe. Bei mehr Höhe nachfragen / Dati validi per altezza massima 262 ft di torre. Per altezze superiori consultare Comansa / Допустимые данные до 262 фут высоты крана. Для более высоких высот консультируйтесь

MECANISMOS

Mechanisms / Mécanismes / Antriebe / Meccanismi / Механизмы



| | | | | | |
|--|---|--|---|--|---|
| Elevación / Hoist / Levage / Hub / Sollevamento / Тип механизма (подъем) | Abatimiento / Luffing / Relevage / Einziehen / Brändeggio / Складывание | Giro / Slewing / Rotation / Drehbewegung / Rotazione / Поворот | Traslación / Travel / Translation / Verfahrbewegung / Traslazione / Ход | Tensión de alimentación / Operating voltage / Tension de service / Betriebsspannung / Tensione di alimentazione / Напряжение источника питания | Potencia requerida / Required power / Puissance requise / Benötigte Leistung / Potenza richiesta / требуемая мощность |
| EFU5-50-30 | AFU2-65-40 | (3x) GFU-7.5 | (2x) TRA-7.5 | 480 V | 115 kVA |
| EFU5L-50-30 | | | (4x) TRA-7.5 | 3 ph 60 Hz | 115 kVA |

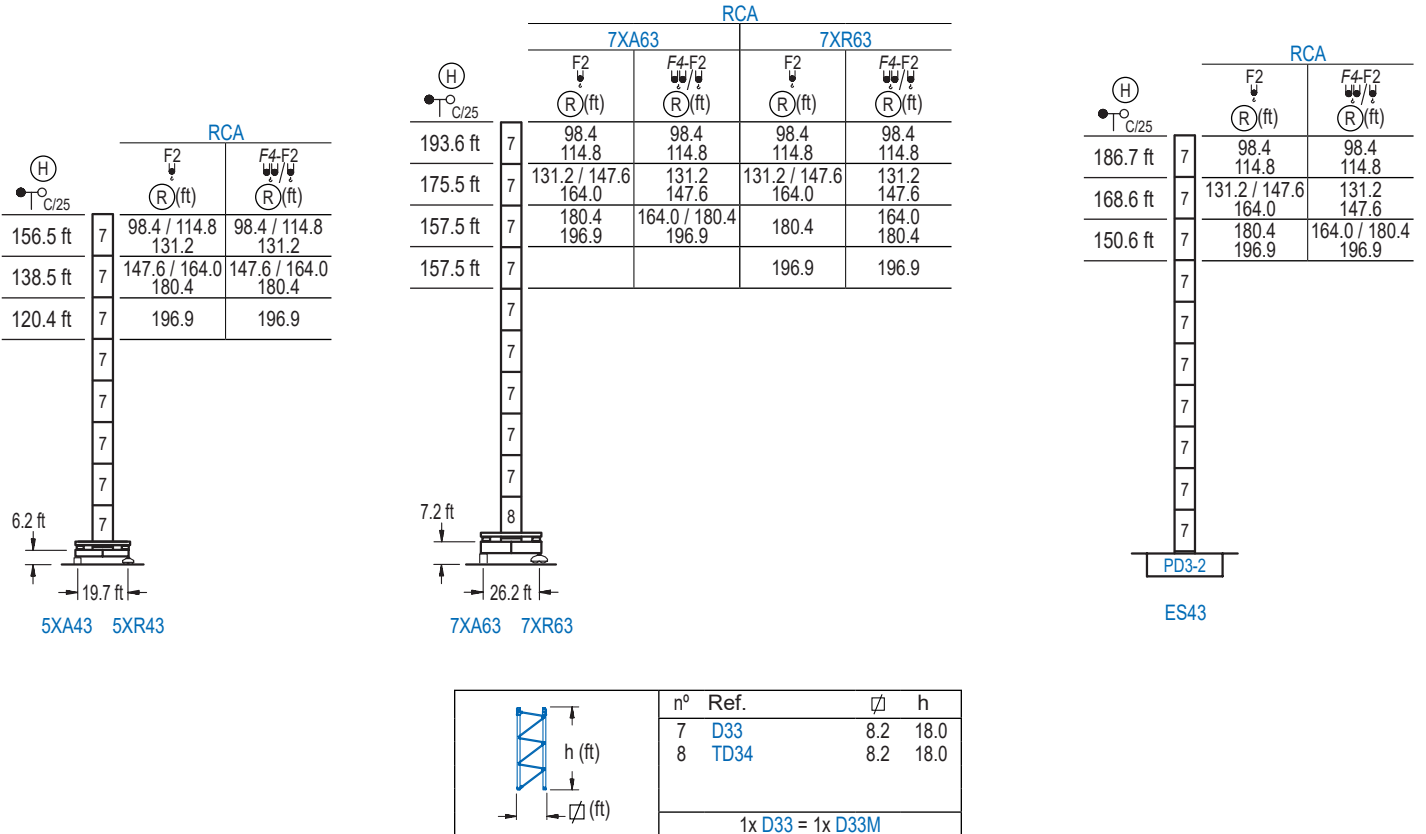
Opcional / Optional / En option / Kaufoption / Opzionale / Опционально

*

ALTURAS DE TORRE

Tower height / Hauteurs de tour / Turmhöhen / Altezza della torre / Высота башни

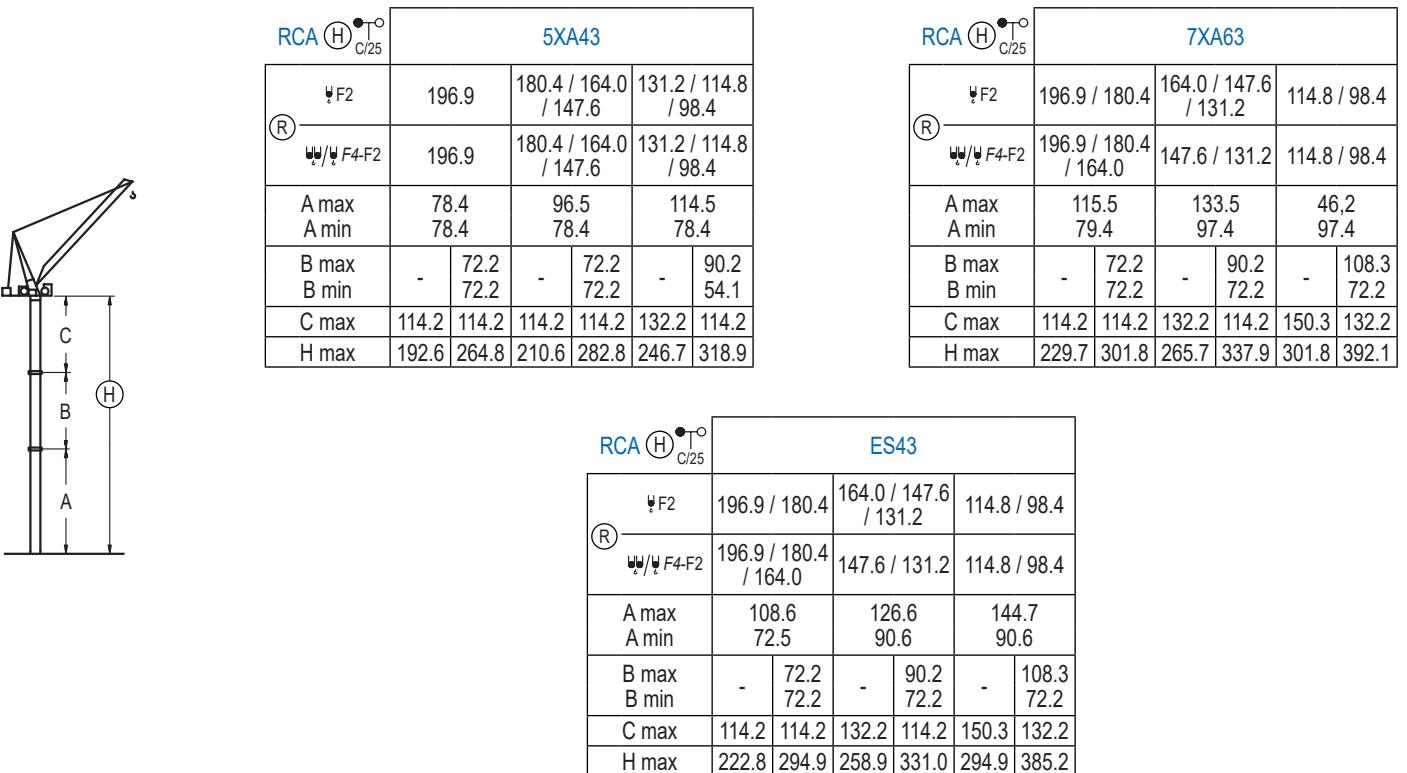
∅ 8.2 ft



GRÚA ARRIOSTRADA

Braced crane / Grue à entretoisement / Abgespannter Kran / Gru ancorata / Нарастиваемый кран

∅ 8.2 ft

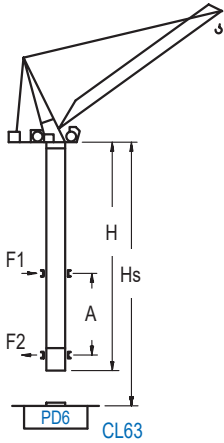


Otras zonas de viento, alturas superiores, arriostramientos o trepado interno consultar / Other wind zones, additional hook heights, tie frames or internal climbing on request / Autres zones de vent, des hauteurs supplémentaires, entretoisements ou grues avec cage de télescopage intérieure, sur demande / Andere Windzonen, weitere Hakenhöhen, Abspannungen zum Gebäude oder Klettern im Gebäude auf Anfrage / Per zone con velocità del vento particolari, altezze superiori, ancoraggi o rampante in cavedio, consultare il fabbricante / При других ветренных зонах, при большой высоте, привязках к зданию или наращивании крана внутри здания проконсультируйтесь с нами

GRÚA TREPADORA

Internal climbing crane / Grue avec cage de télescopage intérieure / Kran mit klettern im Gebäude / Gru in rampante in cavedio / Кран с самоподъемом

Ø 8.2 ft

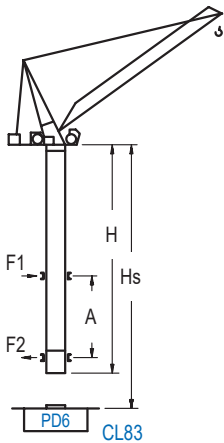


CL63

RCA (H) C/25

| | F2 (R) (ft) | F4-F2 (R) (ft) | Hs < 1,150 ft | |
|--|----------------|-------------------|---------------|---------------|
| | | | A max (ft) | A min (ft) |
| 234.9 ft (7x D33 + TD34 + 4x D34A + CLD34A-24) | 98.4 | 98.4 | 80.7 | 49.2 |
| 216.9 ft (6x D33 + TD34 + 4x D34A + CLD34A-24) | 114.8 131.2 | 114.8 131.2 | 80.7 | 49.2 |
| 198.8 ft (5x D33 + TD34 + 4x D34A + CLD34A-24) | 147.6 164.0 | 147.6 164.0 | 80.7 | 49.2 |
| 162.7 ft (4x D33 + TD34 + 4x D34A + CLD34A-24) | 180.4 196.9 | 180.4 196.9 | 71.9 | 45.9 |

| n° | Ref. | Ø | h |
|------------------|-----------|-----|------|
| | D33 | 8.2 | 18.0 |
| | TD34 | 8.2 | 18.0 |
| | D34A | 8.2 | 18.0 |
| | CLD34A-24 | 8.2 | 12.5 |
| 1x D33 = 1x D33M | | | |



CL83

RCA (H) C/25

| | F2 (R) (ft) | F4-F2 (R) (ft) | Hs < 1,150 ft | |
|--|----------------|-------------------|---------------|---------------|
| | | | A max (ft) | A min (ft) |
| 234.9 ft (6x D33 + TD34 + TD36B + 4x D36A + CLD36A-28) | 98.4 | 98.4 | 80.7 | 36.1 |
| 216.9 ft (5x D33 + TD34 + TD36B + 4x D36A + CLD36A-28) | 114.8 131.2 | 114.8 131.2 | 80.7 | 36.1 |
| 198.8 ft (4x D33 + TD34 + TD36B + 4x D36A + CLD36A-28) | 147.6 164.0 | 147.6 164.0 | 80.7 | 32.8 |
| 162.7 ft (3x D33 + TD34 + TD36B + 4x D36A + CLD36A-28) | 180.4 196.9 | 180.4 196.9 | 71.9 | 32.8 |

| n° | Ref. | Ø | h |
|------------------|-----------|-----|------|
| | D33 | 8.2 | 18.0 |
| | TD34 | 8.2 | 18.0 |
| | TD36B | 8.2 | 18.0 |
| | D36A | 8.2 | 18.0 |
| | CLD36A-28 | 8.2 | 12.5 |
| 1x D33 = 1x D33M | | | |

Otras zonas de viento, alturas superiores, arriostamientos o trepado interno consultar / Other wind zones, additional hook heights, tie frames or internal climbing on request / Autres zones de vent, des hauteurs supplémentaires, entretoisements ou grues avec cage de télescopage intérieure, sur demande / Andere Windzonen, weitere Hakenhöhen, Abspannungen zum Gebäude oder Klettern im Gebäude auf Anfrage / Per zone con velocità del vento particolari, altezze superiori, ancoraggi o rampante in cavedio, consultare il fabbricante / При других ветренных зонах, при большой высоте, привязках к зданию или наращивании крана внутри здания проконсультируйтесь с нами

LCL Series