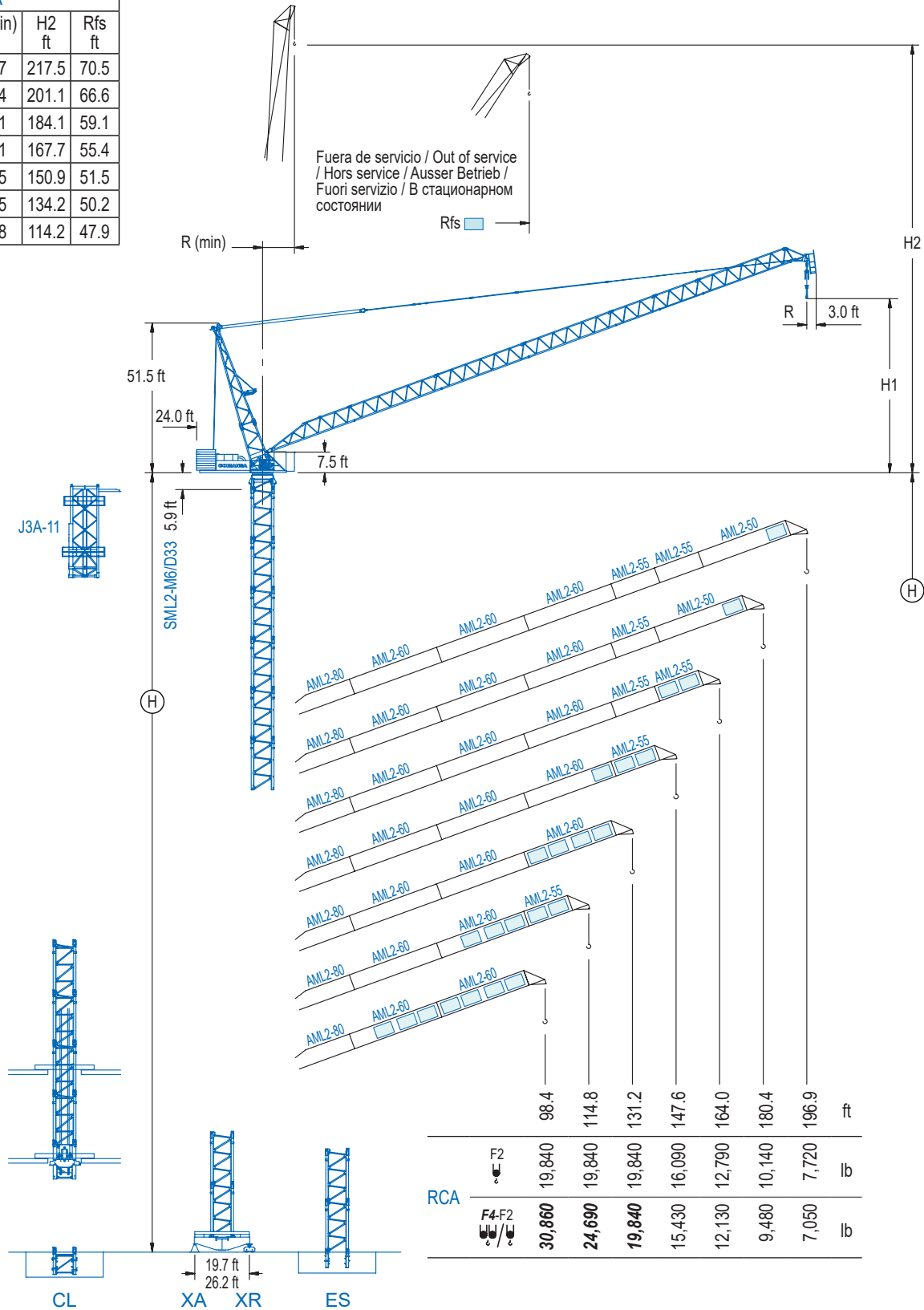


RCA				
R (max) ft	H1 ft	R (min) ft	H2 ft	Rfs ft
196.9	67.9	18.7	217.5	70.5
180.4	64.0	16.4	201.1	66.6
164.0	60.0	17.1	184.1	59.1
147.6	56.1	14.1	167.7	55.4
131.2	52.2	13.5	150.9	51.5
114.8	48.2	13.5	134.2	50.2
98.4	35.1	10.8	114.2	47.9



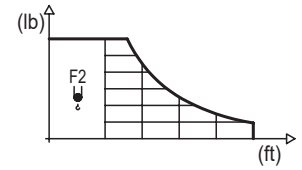
LCL Series

DIAGRAMA DE CARGAS

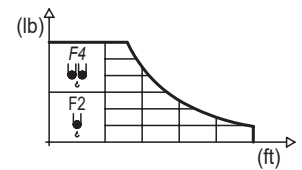
Load chart / Diagramme de charges / Lastdiagramm / Diagramma di carico / Диаграмма распределения нагрузки

RCA

R	19,840 lb		32.8	49.2	65.6	82.0	98.4	114.8	131.2	147.6	164.0	180.4	196.9	↔ (ft) ↓ (lb)
196.9	118.1							19,840	16,310	13,210	10,930	9,170	7,720	
180.4	121.4							19,840	17,440	14,350	12,040	10,140		
164.0	124.7							19,840	18,320	15,230	12,790			
147.6	129.6							19,840	19,470	16,090				
131.2	131.2								19,840					
114.8	114.8							19,840						
98.4	98.4						19,840							



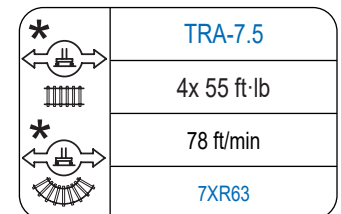
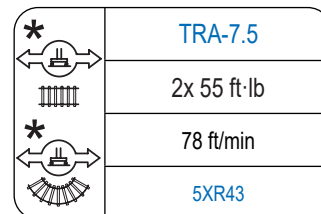
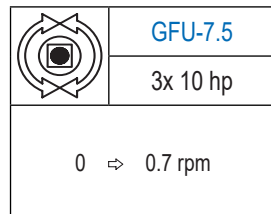
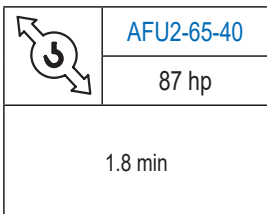
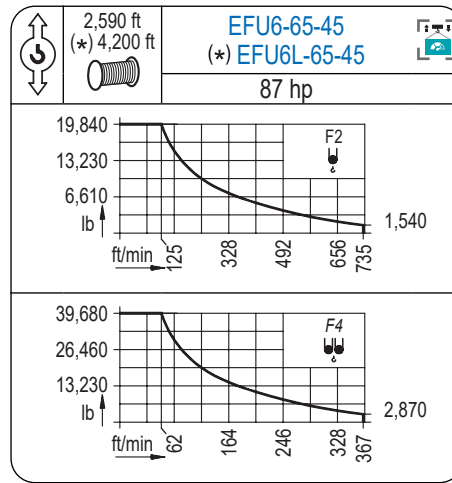
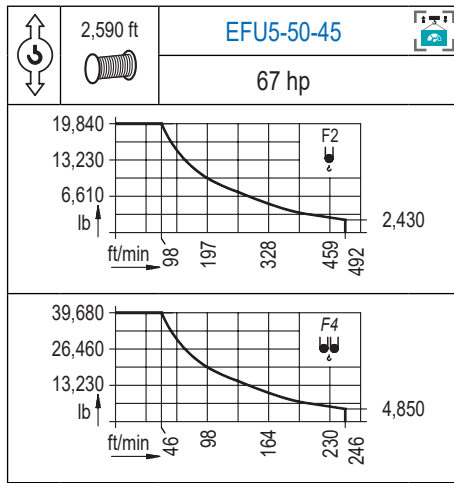
R	39,680 lb	19,840 lb		32.8	49.2	65.6	82.0	98.4	114.8	131.2	147.6	164.0	180.4	196.9	↔ (ft) ↓ (lb)
196.9	59.1	94.2		39,680	33,640	24,180	18,700	15,100	12,570	10,690	9,240	8,050	7,050		
180.4	60.7	102.4		39,680	35,650	26,480	20,920	17,150	14,460	12,410	10,800	9,480			
164.0	62.7	110.2		39,680	37,460	28,440	22,770	18,870	15,830	13,870	12,130				
147.6	65.6	119.4			39,680	30,620	24,800	20,750	17,750	15,430					
131.2	69.2				39,680	33,070	27,140	22,970	19,840						
114.8	73.5				39,680	35,320	29,100	24,690							
98.4	78.7				39,680	37,920	30,860								



Datos válidos hasta 262 ft de altura de torre. Para alturas mayores consultar / Valid data up to 262 ft of tower height. Additional heights on request / Données valables jusqu'à 262 ft de la hauteur de tour. Pour des autres hauteurs, merci de nous consulter / Gültige Daten bis zu 262 ft Turmhöhe. Bei mehr Höhe nachfragen / Dati validi per altezza massima 262 ft di torre. Per altezze superiori consultare Comansa / Допустимые данные до 262 фут высоты крана. Для более высоких высот консультируйтесь

MECANISMOS

Mechanisms / Mécanismes / Antriebe / Meccanismi / Механизмы



Elevación / Hoist / Levage / Hub / Sollevamento / Тип механизма (подъем)	Abatimiento / Luffing / Relevage / Einziehen / Brändeggio / Складывание	Giro / Slewing / Rotation / Drehbewegung / Rotazione / Поворот	Traslación / Travel / Translation / Verfahrbewegung / Traslazione / Ход	Tensión de alimentación / Operating voltage / Tension de service / Betriebsspannung / Tensione di alimentazione / Напряжение источника питания	Potencia requerida / Required power / Puissance requise / Benötigte Leistung / Potenza richiesta / требуемая мощность
EFU5-50-45			(2x) TRA-7.5	480 V	115 kVA
EFU6-65-45	AFU2-65-40	(3x) GFU-7.5	(4x) TRA-7.5	3 ph	130 kVA
EFU6L-65-45				60 Hz	130 kVA

Optional / Optional / En option / Kaufoption / Opzionale / Опционально

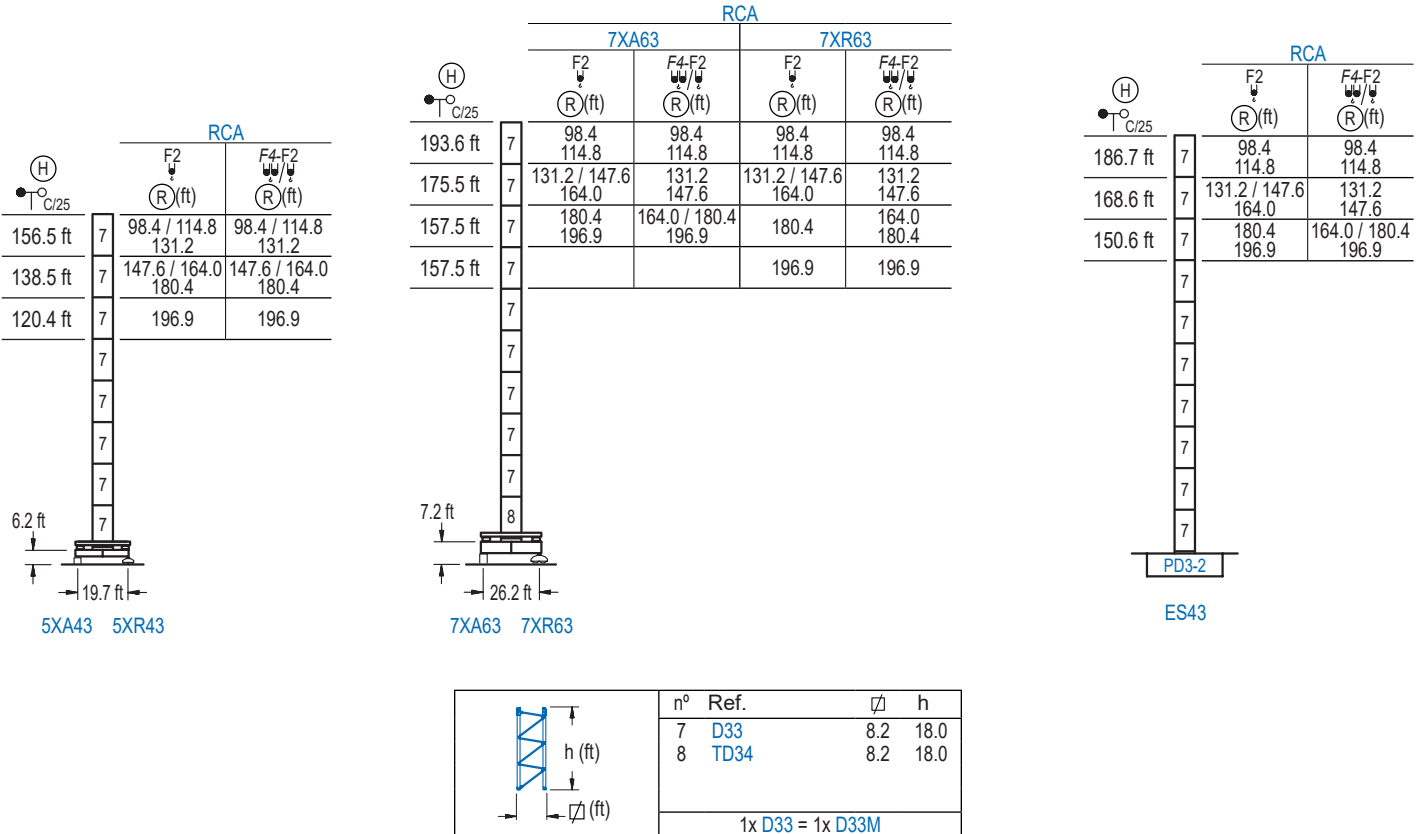
*

LCL Series

ALTURAS DE TORRE

Tower height / Hauteurs de tour / Turmhöhen / Altezza della torre / Высота башни

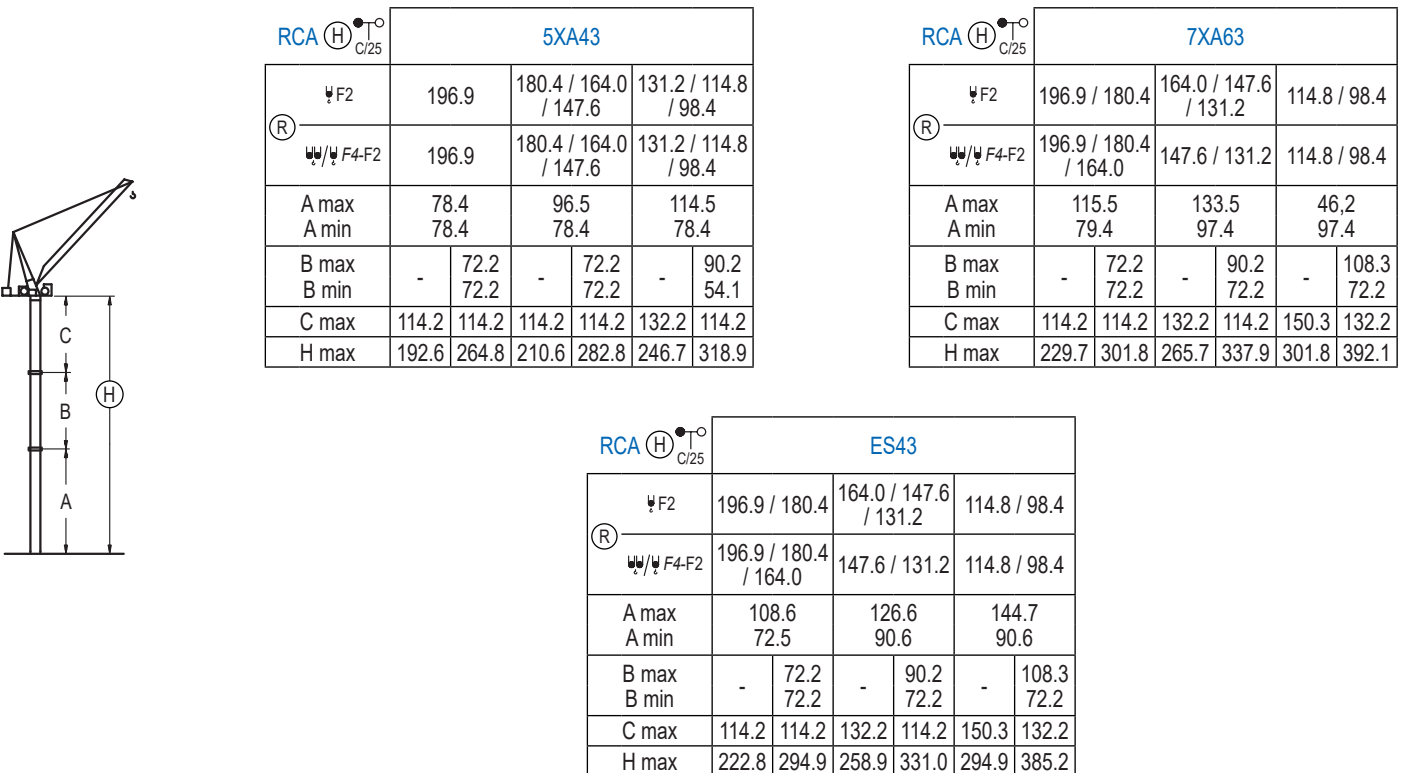
∅ 8.2 ft



GRÚA ARRIOSTRADA

Braced crane / Grue à entretoisement / Abgespannter Kran / Gru ancorata / Нарастиваемый кран

∅ 8.2 ft

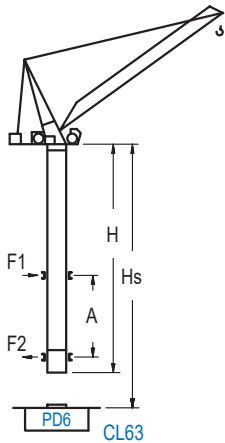


Otras zonas de viento, alturas superiores, arriostramientos o trepado interno consultar / Other wind zones, additional hook heights, tie frames or internal climbing on request / Autres zones de vent, des hauteurs supplémentaires, entretoisements ou grues avec cage de télescopage intérieure, sur demande / Andere Windzonen, weitere Hakenhöhen, Abspannungen zum Gebäude oder Klettern im Gebäude auf Anfrage / Per zone con velocità del vento particolari, altezze superiori, ancoraggi o rampante in cavedito, consultare il fabbricante / При других ветренных зонах, при большой высоте, привязках к зданию или наращивании крана внутри здания проконсультируйтесь с нами

GRÚA TREPADORA

Internal climbing crane / Grue avec cage de télescopage intérieure / Kran mit klettern im Gebäude / Gru in rampante in cavedio / Кран с самоподъемом

Ø 8.2 ft

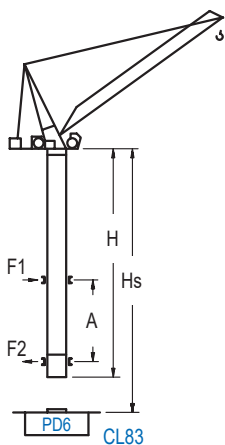


CL63

RCA (H) $\frac{C}{25}$	F2 (R) (ft)	F4-F2 (R) (ft)	Hs < 1,150 ft	
			A max (ft)	A min (ft)
234.9 ft (7x D33 + TD34 + 4x D34A + CLD34A-24)	98.4	98.4	80.7	49.2
216.9 ft (6x D33 + TD34 + 4x D34A + CLD34A-24)	114.8 131.2	114.8 131.2	80.7	49.2
198.8 ft (5x D33 + TD34 + 4x D34A + CLD34A-24)	147.6 164.0	147.6 164.0	80.7	49.2
162.7 ft (4x D33 + TD34 + 4x D34A + CLD34A-24)	180.4 196.9	180.4 196.9	71.9	45.9

n°	Ref.	Ø	h
	D33	8.2	18.0
	TD34	8.2	18.0
	D34A	8.2	18.0
	CLD34A-24	8.2	12.5

1x D33 = 1x D33M



CL83

RCA (H) $\frac{C}{25}$	F2 (R) (ft)	F4-F2 (R) (ft)	Hs < 1,150 ft	
			A max (ft)	A min (ft)
234.9 ft (6x D33 + TD34 + TD36B + 4x D36A + CLD36A-28)	98.4	98.4	80.7	36.1
216.9 ft (5x D33 + TD34 + TD36B + 4x D36A + CLD36A-28)	114.8 131.2	114.8 131.2	80.7	36.1
198.8 ft (4x D33 + TD34 + TD36B + 4x D36A + CLD36A-28)	147.6 164.0	147.6 164.0	80.7	32.8
162.7 ft (3x D33 + TD34 + TD36B + 4x D36A + CLD36A-28)	180.4 196.9	180.4 196.9	71.9	32.8

n°	Ref.	Ø	h
	D33	8.2	18.0
	TD34	8.2	18.0
	TD36B	8.2	18.0
	D36A	8.2	18.0
	CLD36A-28	8.2	12.5

1x D33 = 1x D33M

Otras zonas de viento, alturas superiores, arriostramientos o trepado interno consultar / Other wind zones, additional hook heights, tie frames or internal climbing on request / Autres zones de vent, des hauteurs supplémentaires, entretoisements ou grues avec cage de télescopage intérieure, sur demande / Andere Windzonen, weitere Hakenhöhen, Abspannungen zum Gebäude oder Klettern im Gebäude auf Anfrage / Per zone con velocità del vento particolari, altezze superiori, ancoraggi o rampante in cavedio, consultare il fabbricante / При других ветренных зонах, при большой высоте, привязках к зданию или наращивании крана внутри здания проконсультируйтесь с нами

LCL Series