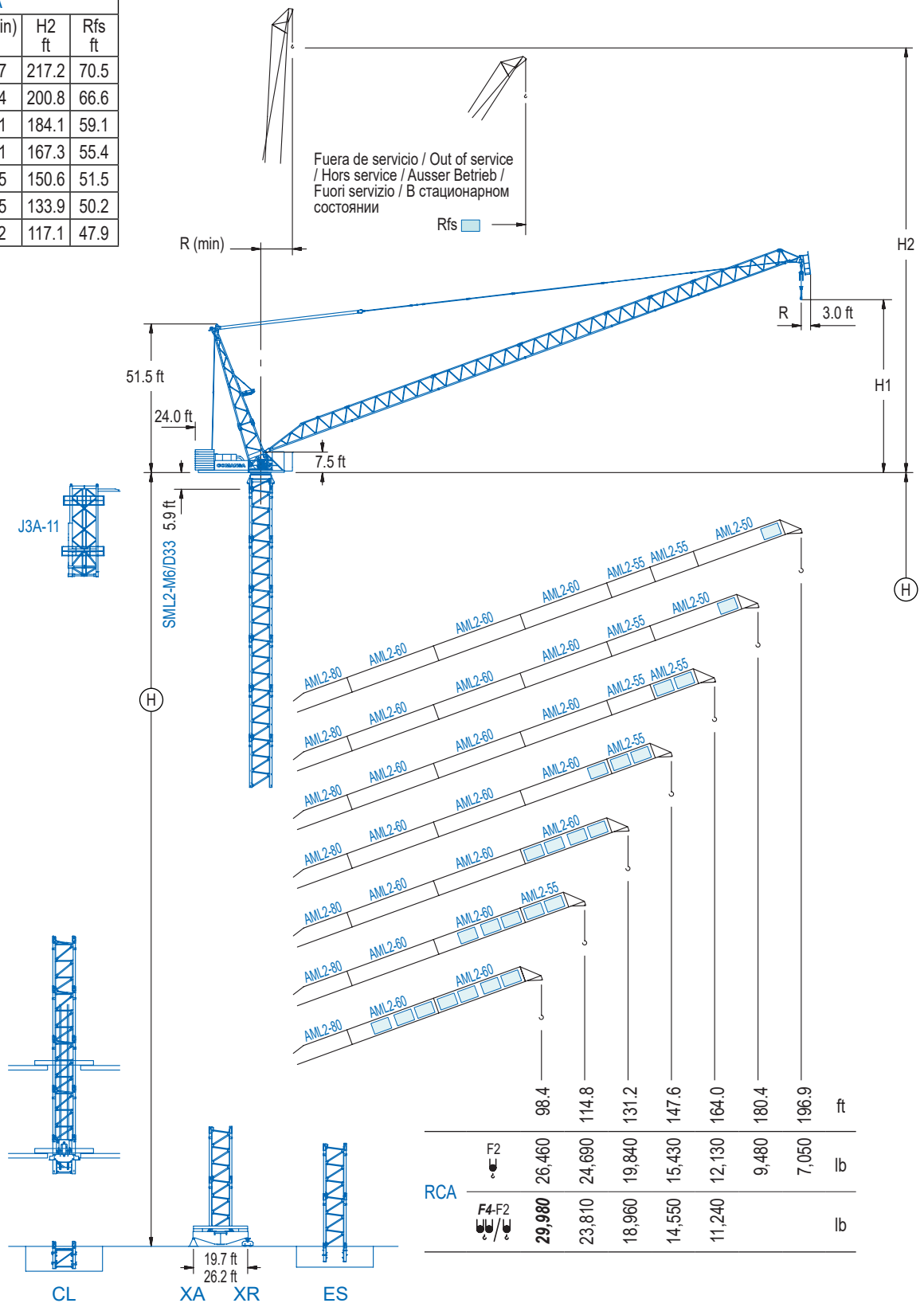


RCA				
R (max) ft	H1 ft	R (min) ft	H2 ft	Rfs ft
196.9	67.9	18.7	217.2	70.5
180.4	64.0	16.4	200.8	66.6
164.0	60.4	17.1	184.1	59.1
147.6	56.4	14.1	167.3	55.4
131.2	52.2	13.5	150.6	51.5
114.8	48.2	13.5	133.9	50.2
98.4	44.0	11.2	117.1	47.9


LCL Series

RCA SR/DR Automático. / Reeving SR/DR Automatic. / SM/DM Automatique. / Automatische Umschierung. / SR/DR automatico. / Автоматическая смена запасовки.

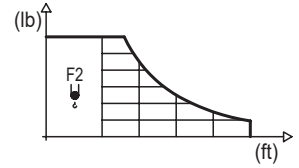


DIAGRAMA DE CARGAS

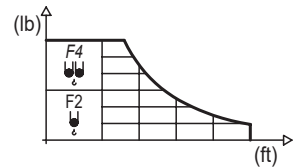
Load chart / Diagramme de charges / Lastdiagramm / Diagramma di carico / Диаграмма распределения нагрузки

RCA

R	26,460 lb		32.8	49.2	65.6	82.0	98.4	114.8	131.2	147.6	164.0	180.4	196.9	↔ (ft) ↓ (lb)
196.9	91.9					26,460	23,370	17,920	14,330	11,770	9,830	8,330	7,050	
180.4	95.1					26,460	25,040	19,620	15,920	13,230	11,180	9,480		
164.0	98.4					26,460	20,990	17,200	14,370	12,130				
147.6	101.7					26,460	22,290	18,410	15,430					
131.2	105.0					26,460	23,610	19,840						
114.8	108.3					26,460	24,690							
98.4	98.4					26,460								



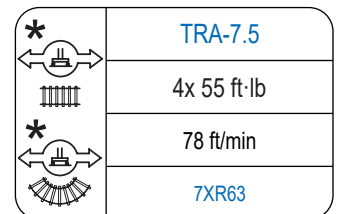
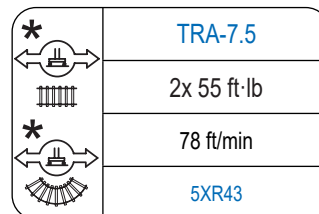
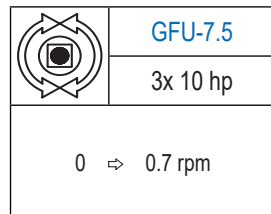
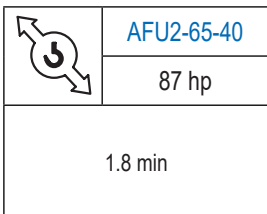
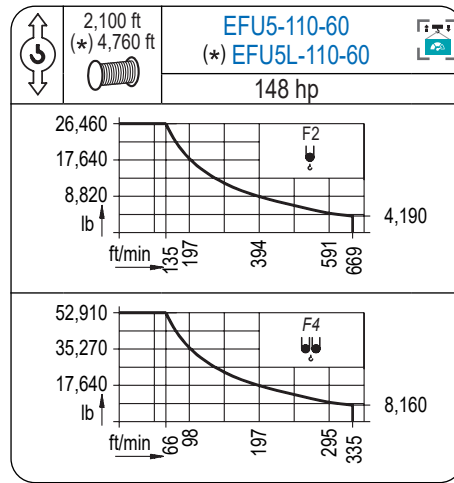
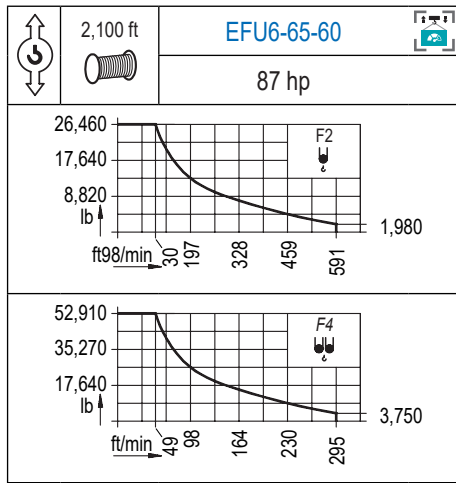
R	52,910 lb	26,460 lb		32.8	49.2	65.6	82.0	98.4	114.8	131.2	147.6	164.0	↔ (ft) ↓ (lb)
164.0	47.9	83.0		52,910	51,080	35,470	26,900	21,490	17,750	15,010	12,920	11,240	
147.6	50.2	89.9		52,910	38,400	29,500	23,770	19,780	16,840	14,550			
131.2	52.8	98.1		52,910	41,510	32,340	26,340	22,110	18,960				
114.8	55.8			52,910	44,250	34,610	28,290	23,810					
98.4	59.1			52,910	47,070	36,750	29,980						



Datos válidos hasta 262 ft de altura de torre. Para alturas mayores consultar / Valid data up to 262 ft of tower height. Additional heights on request / Données valables jusqu'à 262 ft de la hauteur de tour. Pour des autres hauteurs, merci de nous consulter / Gültige Daten bis zu 262 ft Turmhöhe. Bei mehr Höhe nachfragen / Dati validi per altezza massima 262 ft di torre. Per altezze superiori consultare Comansa / Допустимые данные до 262 фут высоты крана. Для более высоких высот консультируйтесь

MECANISMOS

Mechanisms / Mécanismes / Antriebe / Meccanismi / Механизмы



Elevación / Hoist / Levage / Hub / Sollevamento / Тип механизма (подъем)	Abatimiento / Luffing / Relevage / Einziehen / Brändeggio / Складывание	Giro / Slewing / Rotation / Drehbewegung / Rotazione / Поворот	Traslación / Travel / Translation / Verfahrbewegung / Traslazione / Ход	Tensión de alimentación / Operating voltage / Tension de service / Betriebsspannung / Tensione di alimentazione / Напряжение источника питания	Potencia requerida / Required power / Puissance requise / Benötigte Leistung / Potenza richiesta / требуемая мощность
EFU6-65-60			(2x) TRA-7.5	480 V	130 kVA
EFU5-110-60	AFU2-65-40	(3x) GFU-7.5	(4x) TRA-7.5	3 ph	175 kVA
EFU5L-110-60				60 Hz	175 kVA

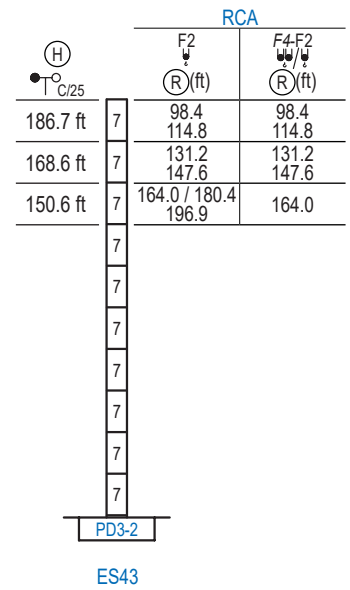
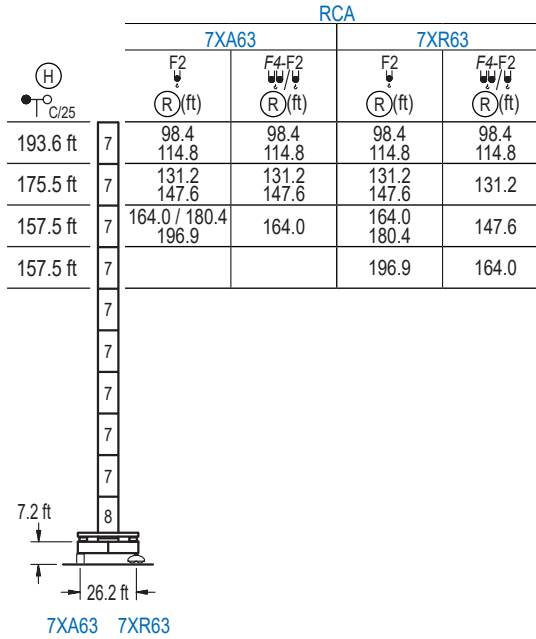
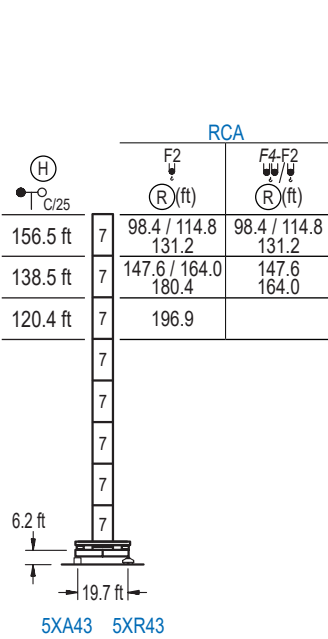
Opzionale / Optional / En option / Kaufoption / Opzionale / Опционально

*

ALTURAS DE TORRE

Tower height / Hauteurs de tour / Turmhöhen / Altezza della torre / Высота башни

∅ 8.2 ft



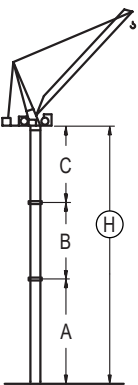
n°	Ref.	∅	h
7	D33	8.2	18.0
8	TD34	8.2	18.0

1x D33 = 1x D33M

GRÚA ARRIOSTRADA

Braced crane / Grue à entretoisement / Abgespannter Kran / Gru ancorata / Нарастиваемый кран

∅ 8.2 ft



RCA (H) T _{C/25}		5XA43					
(R)	∅F2	196.9	180.4 / 164.0 / 147.6	131.2 / 114.8 / 98.4			
	∅∅/∅ F4-F2		164.0 / 147.6	131.2 / 114.8 / 98.4			
	A max	78.4	96.5	114.5			
	A min	78.4	78.4	78.4			
	B max	-	72.2	-	90.2		
	B min	-	72.2	-	54.1		
	C max	114.2	114.2	114.2	132.2	114.2	
	H max	192.6	264.8	210.6	282.8	246.7	318.9

RCA (H) T _{C/25}		7XA63					
(R)	∅F2	196.9 / 180.4 / 164.0	147.6 / 131.2	114.8 / 98.4			
	∅∅/∅ F4-F2	164.0	147.6 / 131.2	114.8 / 98.4			
	A max	115.5	133.5	46.2			
	A min	79.4	97.4	97.4			
	B max	-	72.2	-	108.3		
	B min	-	72.2	-	72.2		
	C max	114.2	114.2	132.2	114.2	150.3	132.2
	H max	229.7	301.8	265.7	337.9	301.8	392.1

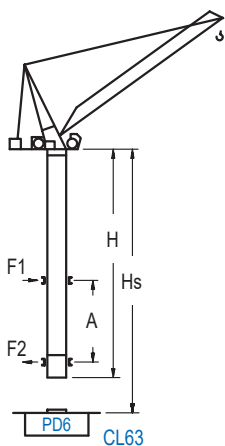
RCA (H) T _{C/25}		ES43					
(R)	∅F2	196.9 / 180.4 / 164.0	147.6 / 131.2	114.8 / 98.4			
	∅∅/∅ F4-F2	164.0	147.6 / 131.2	114.8 / 98.4			
	A max	108.6	126.6	144.7			
	A min	72.5	90.6	90.6			
	B max	-	72.2	-	108.3		
	B min	-	72.2	-	72.2		
	C max	114.2	114.2	132.2	114.2	150.3	132.2
	H max	222.8	294.9	258.9	331.0	294.9	385.2

Otras zonas de viento, alturas superiores, arriostramientos o trepado interno consultar / Other wind zones, additional hook heights, tie frames or internal climbing on request / Autres zones de vent, des hauteurs supplémentaires, entretoisements ou grues avec cage de télescopage intérieure, sur demande / Andere Windzonen, weitere Hakenhöhen, Abspannungen zum Gebäude oder Klettern im Gebäude auf Anfrage / Per zone con velocità del vento particolari, altezze superiori, ancoraggi o rampante in cavedito, consultare il fabbricante / При других ветренных зонах, при большой высоте, привязках к зданию или наращивании крана внутри здания проконсультируйтесь с нами

GRÚA TREPADORA

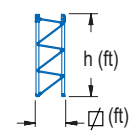
Internal climbing crane / Grue avec cage de télescopage intérieure / Kran mit klettern im Gebäude / Gru in rampante in cavedio / Кран с самоподъемом

Ø 8.2 ft

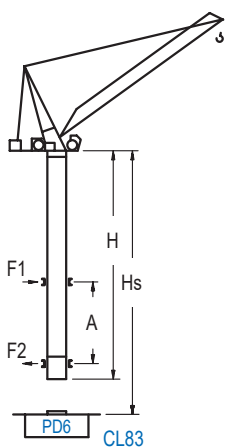


CL63

RCA (H) $\frac{\circ}{C/25}$	F2 (R) (ft)	F4-F2 (R) (ft)	Hs < 1,150 ft	
			A max (ft)	A min (ft)
234.9 ft (7x D33 + TD34 + 4x D34A + CLD34A-24)	98.4	98.4	80.7	49.2
216.9 ft (6x D33 + TD34 + 4x D34A + CLD34A-24)	114.8 131.2	114.8 131.2	80.7	49.2
198.8 ft (5x D33 + TD34 + 4x D34A + CLD34A-24)	147.6 164.0	147.6 164.0	80.7	49.2
162.7 ft (4x D33 + TD34 + 4x D34A + CLD34A-24)	180.4 196.9		71.9	45.9

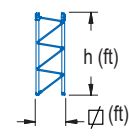


n°	Ref.	Ø	h
	D33	8.2	18.0
	TD34	8.2	18.0
	D34A	8.2	18.0
	CLD34A-24	8.2	12.5
1x D33 = 1x D33M			



CL83

RCA (H) $\frac{\circ}{C/25}$	F2 (R) (ft)	F4-F2 (R) (ft)	Hs < 1,150 ft	
			A max (ft)	A min (ft)
234.9 ft (6x D33 + TD34 + TD36B + 4x D36A + CLD36A-28)	98.4	98.4	80.7	36.1
216.9 ft (5x D33 + TD34 + TD36B + 4x D36A + CLD36A-28)	114.8 131.2	114.8 131.2	80.7	36.1
198.8 ft (4x D33 + TD34 + TD36B + 4x D36A + CLD36A-28)	147.6 164.0	147.6 164.0	80.7	32.8
162.7 ft (3x D33 + TD34 + TD36B + 4x D36A + CLD36A-28)	180.4 196.9		71.9	32.8



n°	Ref.	Ø	h
	D33	8.2	18.0
	TD34	8.2	18.0
	TD36B	8.2	18.0
	D36A	8.2	18.0
	CLD36A-28	8.2	12.5
1x D33 = 1x D33M			

Otras zonas de viento, alturas superiores, arriostamientos o trepado interno consultar / Other wind zones, additional hook heights, tie frames or internal climbing on request / Autres zones de vent, des hauteurs supplémentaires, entretoisements ou grues avec cage de télescopage intérieure, sur demande / Andere Windzonen, weitere Hakenhöhen, Abspannungen zum Gebäude oder Klettern im Gebäude auf Anfrage / Per zone con velocità del vento particolari, altezze superiori, ancoraggi o rampante in cavedio, consultare il fabbricante / При других ветренных зонах, при большой высоте, привязках к зданию или наращивании крана внутри здания проконсультируйтесь с нами

LCL Series