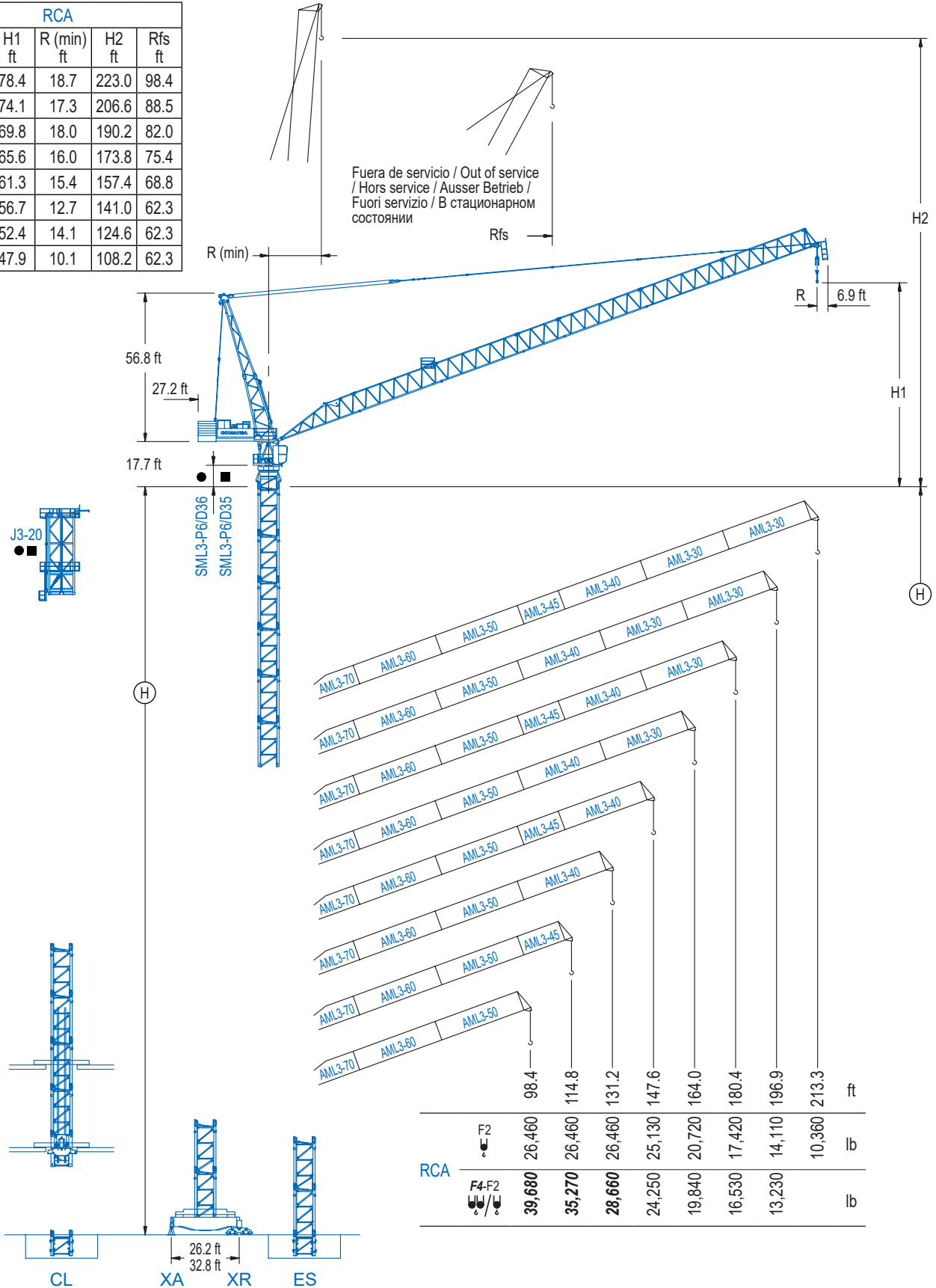


LCL Series

LCL500

52,910 lb

RCA				
R (max) ft	H1 ft	R (min) ft	H2 ft	Rfs ft
213.3	78.4	18.7	223.0	98.4
196.9	74.1	17.3	206.6	88.5
180.4	69.8	18.0	190.2	82.0
164.0	65.6	16.0	173.8	75.4
147.6	61.3	15.4	157.4	68.8
131.2	56.7	12.7	141.0	62.3
114.8	52.4	14.1	124.6	62.3
98.4	47.9	10.1	108.2	62.3



LCL Series

RCA SR/DR Automático. / Reeving SR/DR Automatic. / SM/DM Automatique. / Automatische Umscheerung. / SR/DR automatico. / Автоматическая смена запасовки.

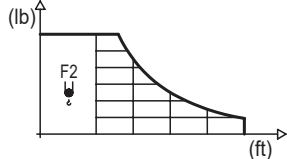
 EN 14439

DIAGRAMA DE CARGAS

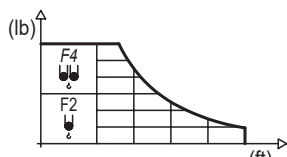
Load chart / Diagramme de charges / Lastdiagramm / Diagramma di carico / Диаграмма распределения нагрузки

RCA

R	26,460 lb		32.8	49.2	65.6	82.0	98.4	114.8	131.2	147.6	164.0	180.4	196.9	213.3	↔ (ft) ↓ (lb)
213.3	91.9					26,460	24,600	20,810	17,970	15,760	14,000	12,570	11,350	10,360	
196.9	109.9					26,460	24,890	21,650	19,140	17,110	15,450	14,110			
180.4	124.7					26,460	24,980	21,890	19,420	17,420					
164.0	132.9					26,460	23,830	20,720							
147.6	141.1					26,460	25,130								
131.2	131.2					26,460									
114.8	114.8					26,460									
98.4	98.4					26,460									



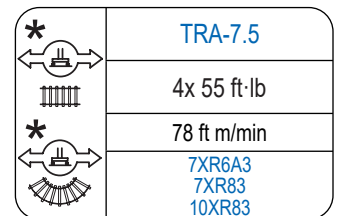
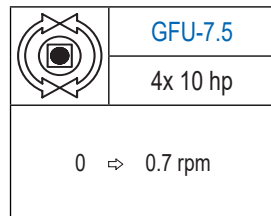
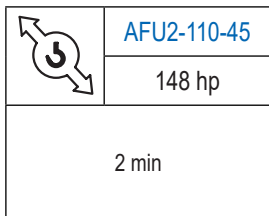
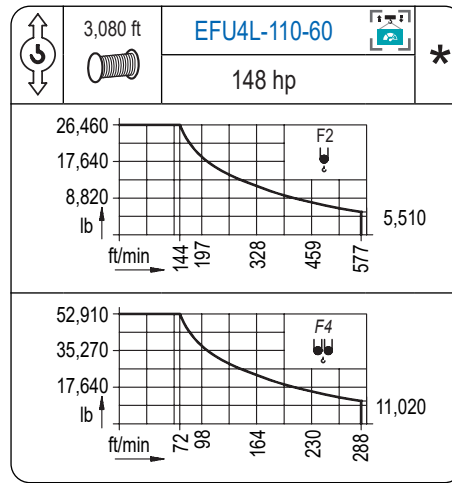
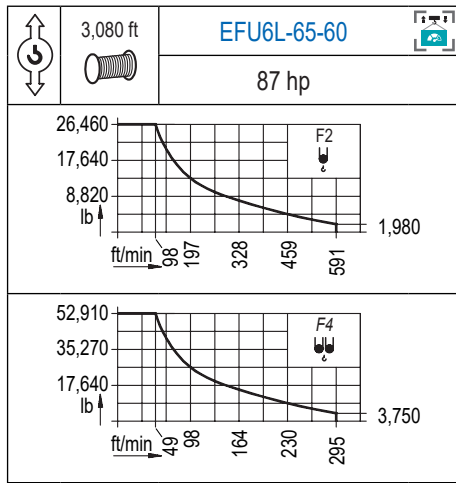
R	52,910 lb	26,460 lb	32.8	49.2	65.6	82.0	98.4	114.8	131.2	147.6	164.0	180.4	196.9	↔ (ft) ↓ (lb)
196.9	54.1	104.3		52,910	43,250	34,190	28,170	23,880	20,680	18,170	16,180	14,570	13,230	
180.4	65.6	120.1		52,910	40,920	33,250	27,890	23,940	20,900	18,500	16,530			
164.0	72.2	129.3		52,910	45,350	36,510	30,420	25,970	22,550	19,840				
147.6	68.9	135.8		52,910	44,950	37,130	31,570	27,430	24,250					
131.2	75.5			52,910	48,240	39,440	33,250	28,660						
114.8	78.7			52,910	52,400	42,330	35,270							
98.4	75.5			52,910	49,210	39,680								



Datos válidos hasta 262 ft de altura de torre. Para alturas mayores consultar / Valid data up to 262 ft of tower height. Additional heights on request / Données valables jusqu'à 262 ft de la hauteur de tour. Pour des autres hauteurs, merci de nous consulter / Gültige Daten bis zu 262 ft Turmhöhe. Bei mehr Höhe nachfragen / Dati validi per altezza massima 262 ft di torre. Per altezze superiori consultare Comansa / Допустимые данные до 262 фут высоты крана. Для более высоких высот консультируйтесь

MECANISMOS

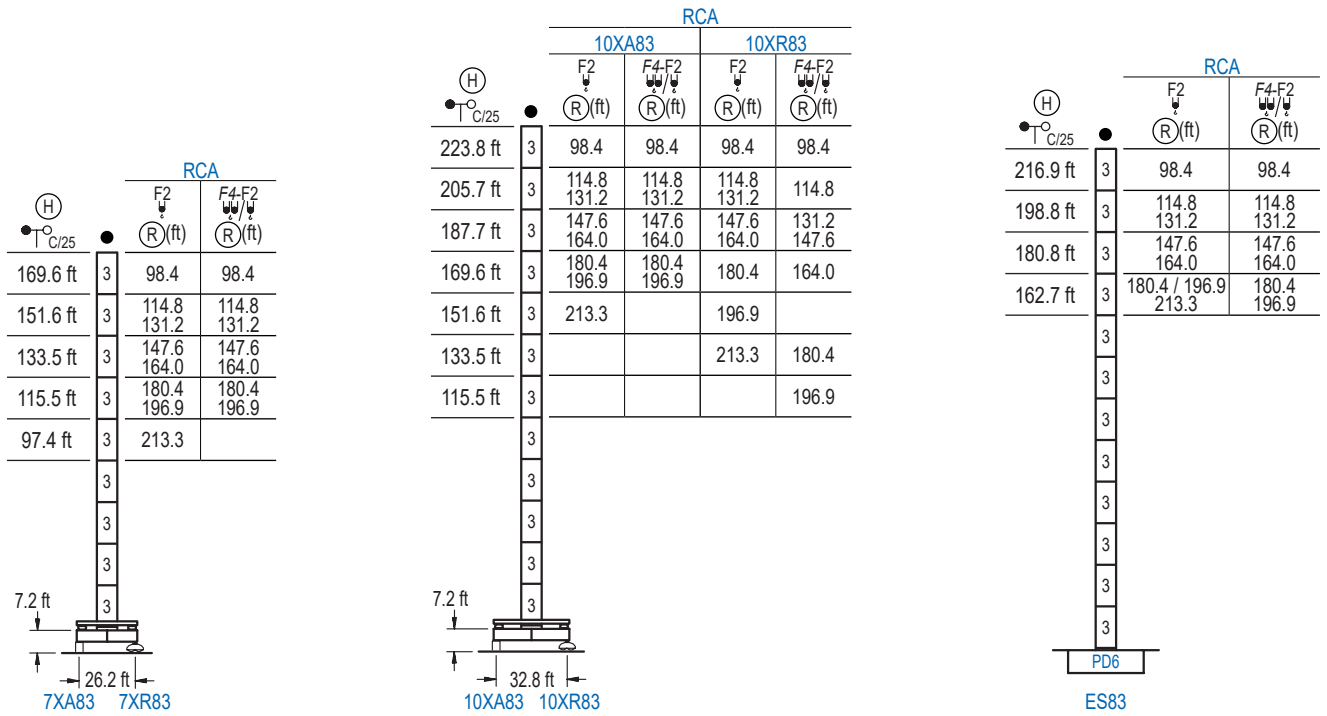
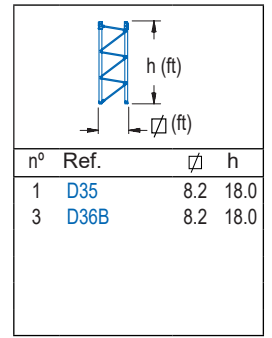
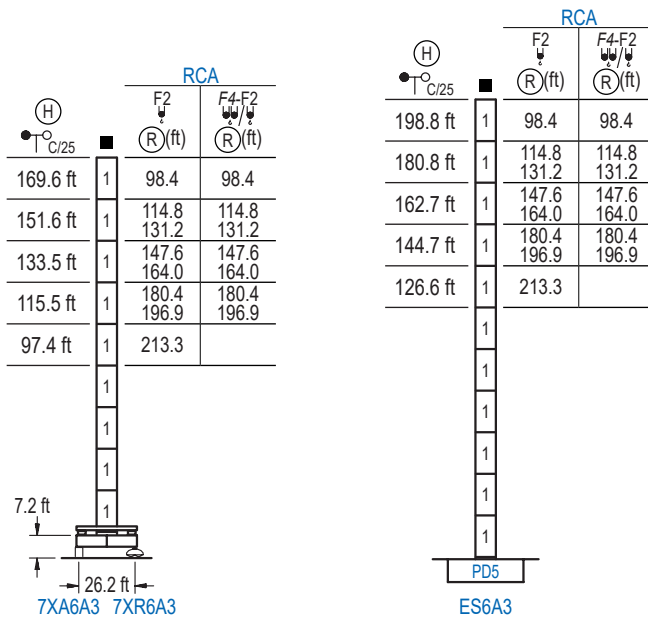
Mechanisms / Mécanismes / Antriebe / Meccanismi / Механизмы



Elevación / Hoist / Levage / Hub / Sollevamento / Тип механизма (подъем)	Abatimiento / Luffing / Relevage / Einziehen / Brändeggio / Складывание	Giro / Slewing / Rotation / Drehbewegung / Rotazione / Поворот	Traslación / Travel / Translation / Verfahrbewegung / Traslazione / Ход	Tensión de alimentación / Operating voltage / Tension de service / Betriebsspannung / Tensione di alimentazione / Напряжение источника питания	Potencia requerida / Required power / Puissance requise / Benötigte Leistung / Potenza richiesta / требуемая мощность
EFU6L-65-60	AFU2-110-44	(4x) GFU-7.5	(4x) TRA-7.5	480 V	175 kVA
EFU4L-110-60				3 ph 60 Hz	220 kVA

Opcional / Optional / En option / Kaufoption / Opzionale / Опционально

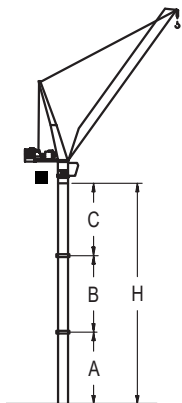
*



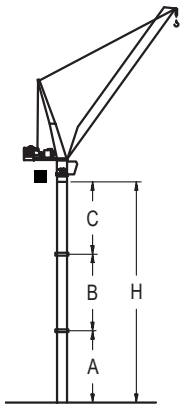
GRÚA ARRIOSTRADA

Braced crane / Grue à entretoisement / Abgespannter Kran / Gru ancorata / Нарастиваемый кран

∅ 8.2 ft

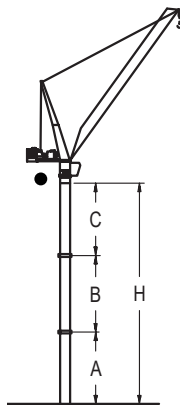


RCA (H) T _{C/25}		7XA6A3								
(R)	F ₂	213.3	196.9 / 180.4	164.0 / 147.6	131.2 / 114.8	98.4				
	F _{4-F2}	-	196.9 / 180.4	164.0 / 147.6	131.2 / 114.8	98.4				
A max		-	79.4	97.4	115.5	133.5				
A min		-	79.4	79.4	97.4	97.4				
B max		-	-	72.2	-	72.2	-	90.2	-	108.3
B min		-	-	54.1	-	54.1	-	72.2	-	72.2
C max		-	-	108.3	90.2	108.3	108.3	126.3	126.3	144.4 / 144.4
H max		-	-	187.7	240.2	205.7	277.9	241.8	332.0	277.9 / 386.2



RCA (H) C/25		ES6A3								
Ⓡ	ψF2	213.3	196.9 / 180.4	164.0 / 147.6	131.2 / 114.8	98.4				
	ψψF4-F2	-	196.9 / 180.4	164.0 / 147.6	131.2 / 114.8	98.4				
A max	90.6	108.8	126.9	126.9	162.7					
A min	72.5	72.5	72.5	90.6	90.6					
B max	-	54.1	-	72.2	-	90.2	108.3			
B min	-	54.1	-	54.1	-	72.2	72.2			
C max	90.2	90.2	108.3	90.2	108.3	108.3	126.3	126.3	144.4	144.4
H max	180.8	234.9	216.9	271.0	234.9	307.1	271.0	361.2	307.1	415.4

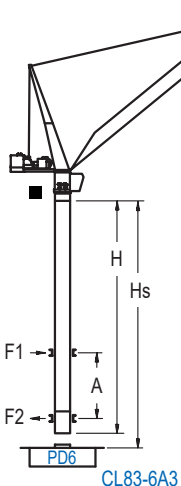
RCA (H) C/25		7XA83								
Ⓡ	ψF2	213.3	196.9 / 180.4	164.0 / 147.6	131.2 / 114.8	98.4				
	ψψF4-F2	-	196.9 / 180.4	164.0 / 147.6	131.2 / 114.8	98.4				
A max	61.4	79.4	97.4	115.5	133.5					
A min	61.4	61.4	79.4	97.4	97.4					
B max	-	54.1	-	72.2	-	90.2	108.3			
B min	-	54.1	-	54.1	-	54.1	72.2	-	126.3	72.2
C max	90.2	90.2	108.3	108.3	126.3	126.3	144.4	144.4	162.4	162.4
H max	151.6	205.7	187.7	259.8	223.8	314.0	259.8	368.1	295.9	422.2



RCA (H) C/25		10XA83								
Ⓡ	ψF2	213.3	196.9 / 180.4	164.0 / 147.6	131.2 / 114.8	98.4				
	ψψF4-F2	-	196.9 / 180.4	164.0 / 147.6	131.2 / 114.8	98.4				
A max	115.5	133.5	151.6	169.6	187.7					
A min	97.4	97.4	97.4	97.4	97.4					
B max	-	72.2	-	72.2	-	90.2	108.3			
B min	-	72.2	-	72.2	-	72.2	72.2	-	126.3	72.2
C max	108.3	108.3	108.3	108.3	126.3	126.3	144.4	144.4	162.4	162.4
H max	223.8	295.9	241.8	314.0	277.9	368.1	314.0	422.2	350.1	476.4

RCA (H) C/25		ES83						
Ⓡ	ψF2	213.3 / 196.9 / 180.4		164.0 / 147.6	131.2 / 114.8	98.4		
	ψψF4-F2	196.9 / 180.4		164.0 / 147.6	131.2 / 114.8	98.4		
A max	126.9		126.9	162.7	180.8			
A min	90.6		90.6	90.6	90.6			
B max	-	72.2	-	90.2	-	108.3	126.3	
B min	-	72.2	-	72.2	-	72.2	72.2	
C max	108.3	108.3	126.3	126.3	144.4	144.4	162.4	162.4
H max	234.9	307.1	271.0	361.2	307.1	415.4	343.2	469.5

GRÚA TREPADORA



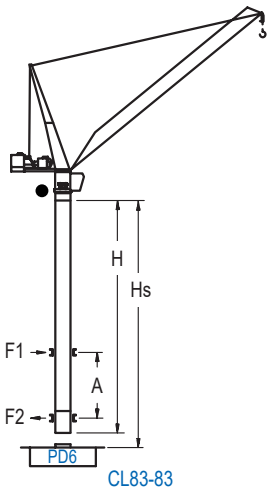
RCA (H) C/25	F2	F4-F2	Hs < 300 m	
	Ⓡ (ft)	Ⓡ (ft)	A max (ft)	A min (ft)
211.0 ft (6x D35 + TD36B + 4x D36A + CLD36A-28)	98.4 114.8 131.2	98.4 114.8 131.2	80.8	45.9
193.0 ft (5x D35 + TD36B + 4x D36A + CLD36A-28)	147.6 164.0	147.6 164.0	71.9	45.9
174.9 ft (4x D35 + TD36B + 4x D36A + CLD36A-28)	180.4 196.9	180.4	62.7	45.9
156.8 ft (3x D35 + TD36B + 4x D36A + CLD36A-28)	213.3	196.9	53.8	49.2

n°	Ref.	∅	h
	D35	8.2	18.0
	TD36B	8.2	18.0
	D36A	8.2	18.0
	CLD36A-28	8.2	12.5

GRÚA TREPADORA

Internal climbing crane / Grue avec cage de télescopage intérieure / Kran mit klettern im Gebäude / Gru in rampante in cavedio / Кран с самоподъемом

Ø 8.2 ft



RCA (H) C/25

	F2 (R) (ft)	F4-F2 (R) (ft)	Hs < 300 m	
			A max (ft)	A min (ft)
211.0 ft (7x D36B + 4x D36A + CLD36A-28)	98.4 114.8 131.2	98.4 114.8 131.2	80.8	45.9
193.0 ft (6x D36B + 4x D36A + CLD36A-28)	147.6 164.0	147.6 164.0	71.9	45.9
174.9 ft (5x D36B + 4x D36A + CLD36A-28)	180.4 196.9 213.3	180.4 196.9	62.7	49.2

n°	Ref.	Ø	h
	D36B	8.2	18.0
	D36A	8.2	18.0
	CLD36A-28	8.2	12.5

Otras zonas de viento, alturas superiores, arriostramientos o trepado interno consultar / Other wind zones , additional hook heights, tie frames or internal climbing on request / Autres zones de vent, des hauteurs supplémentaires, entretoisements ou grues avec cage de télescopage intérieure, sur demande / Andere Windzonen, weitere Hakenhöhen, Abspannungen zum Gebäude oder Klettern im Gebäude auf Anfrage / Per zone con velocità del vento particolari, altezze superiori, ancoraggi o rampante in cavedio, consultare il fabbricante / При других ветренных зонах, при большой высоте, привязках к зданию или наращивании крана внутри здания проконсультируйтесь с нами

