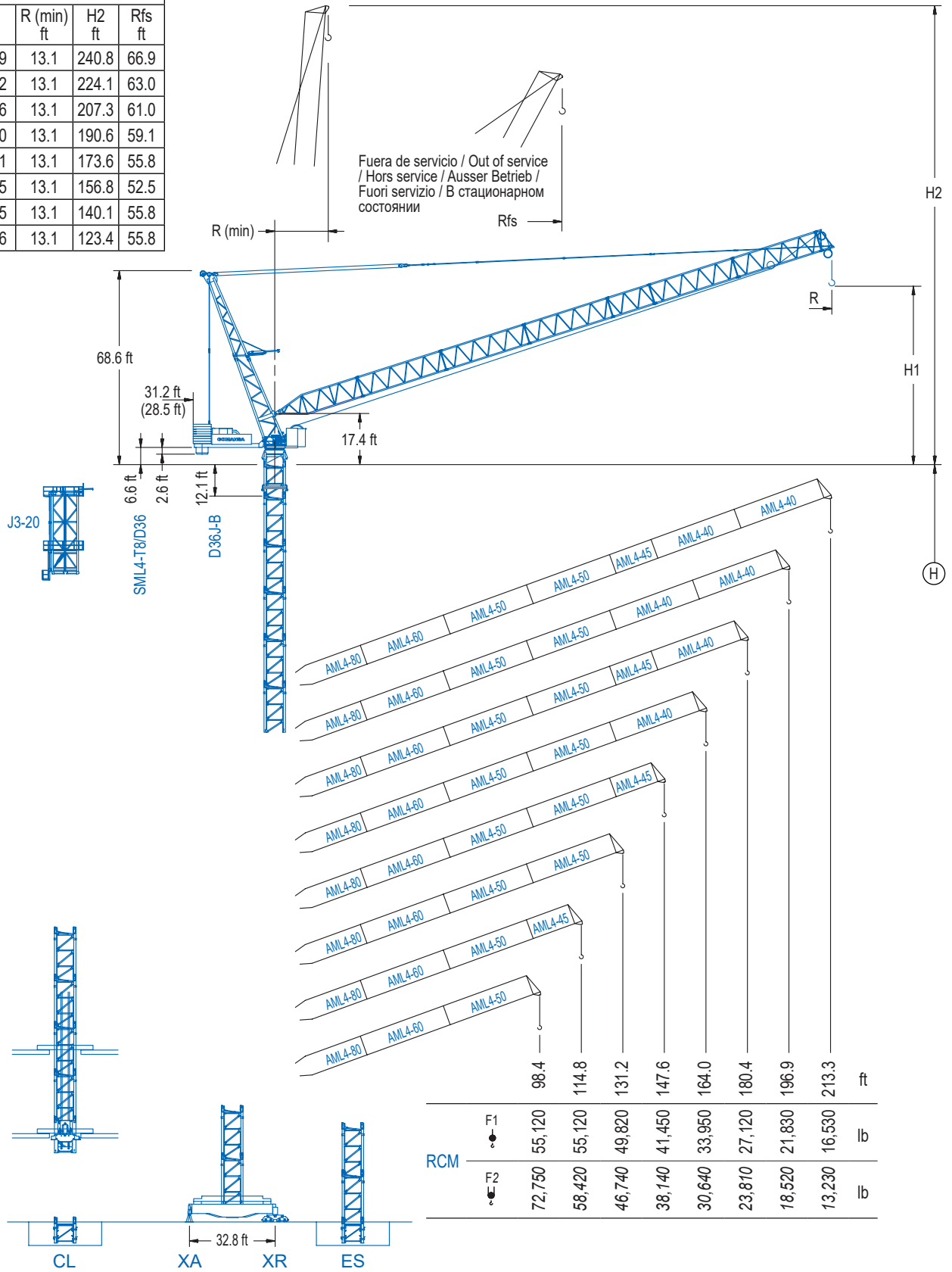


RCM				
R (max) ft	H1 ft	R (min) ft	H2 ft	Rfs ft
213.3	71.9	13.1	240.8	66.9
196.9	68.2	13.1	224.1	63.0
180.4	64.6	13.1	207.3	61.0
164.0	61.0	13.1	190.6	59.1
147.6	57.1	13.1	173.6	55.8
131.2	53.5	13.1	156.8	52.5
114.8	49.5	13.1	140.1	55.8
98.4	45.6	13.1	123.4	55.8



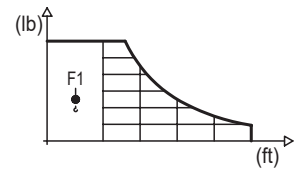
LCL Series

DIAGRAMA DE CARGAS

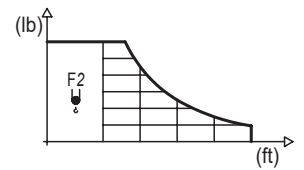
Load chart / Diagramme de charges / Lastdiagramm / Diagramma di carico / Диаграмма распределения нагрузки

RCM

R	F1	Qmax	49.2	65.6	82.0	98.4	114.8	131.2	147.6	164.0	180.4	196.9	213.3	↔(ft) ↓(lb)
213.3	109.3	55,120				55,120	50,150	39,180	31,830	26,540	22,510	19,290	16,530	
196.9	112.2	55,120				55,120	52,950	42,480	35,160	29,720	25,440	21,830		
180.4	113.8	55,120				55,120	54,450	44,440	37,210	31,680	27,120			
164.0	116.8	55,120					55,120	46,850	39,680	33,950				
147.6	118.8	55,120					55,120	48,480	41,450					
131.2	121.1	55,120					55,120	49,820						
114.8	114.8	55,120					55,120							
98.4	98.4	55,120				55,120								



R	F2	Qmax	49.2	65.6	82.0	98.4	114.8	131.2	147.6	164.0	180.4	196.9	213.3	↔(ft) ↓(lb)
213.3	91.9	66,140			66,140	57,630	42,970	33,660	27,230	22,460	18,810	15,830	13,230	
196.9	72.5	92,590		92,590	75,330	56,170	44,180	35,980	29,980	25,370	21,670	18,520		
180.4	63.6	110,230	110,230	105,120	75,220	57,870	46,520	38,470	32,450	27,730	23,810			
164.0	64.6	110,230	110,230	107,670	79,210	61,990	50,440	42,130	35,780	30,640				
147.6	64.6	110,230	110,230	108,050	81,350	64,640	53,170	44,750	38,140					
131.2	65.3	110,230	110,230	109,410	83,530	66,980	55,420	46,740						
114.8	66.3	110,230		110,230	86,460	70,080	58,420							
98.4	67.3	110,230		110,230	88,960	72,750								



Datos válidos hasta 262 ft de altura de torre. Para alturas mayores consultar / Valid data up to 262 ft of tower height. Additional heights on request / Données valables jusqu'à 262 ft de la hauteur de tour. Pour des autres hauteurs, merci de nous consulter / Gültige Daten bis zu 262 ft Turmhöhe. Bei mehr Höhe nachfragen / Dati validi per altezza massima 262 ft di torre. Per altezze superiori consultare Comansa / Допустимые данные до 262 фут высоты крана. Для более высоких высот консультируйтесь

MECANISMOS

Mechanisms / Mécanismes / Antriebe / Meccanismi / Механизмы

EFUP6L-132-250
177 hp

2,720 ft

55,120 lb
30,070 lb
11,020 lb

ft/min: 75, 131, 197, 262, 328, 384, 436

110,230 lb
66,140 lb
22,050 lb

ft/min: 39, 66, 98, 131, 164, 197, 220

EFUP4L-200-250
268 kp *

2,720 ft

55,120 lb
30,070 lb
11,020 lb

ft/min: 112, 131, 197, 262, 328, 394, 436

110,230 lb
66,140 lb
22,050 lb

ft/min: 56, 66, 98, 131, 164, 197, 220

EFU4L-200-250
268 kp *

4,170 ft

55,120 lb
30,070 lb
11,020 lb

ft/min: 135, 197, 328, 459, 435

110,230 lb
66,140 lb
22,050 lb

ft/min: 69, 98, 164, 230, 269

AFU2-110-85
148 hp

2 min

GFU-7.5
4x 10 hp

0 ⇔ 0.7 rpm

TRA-7.5
4x 55 ft-lb

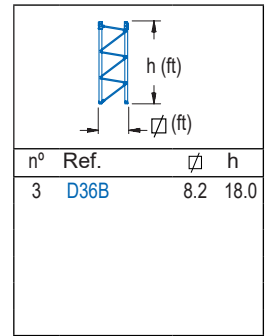
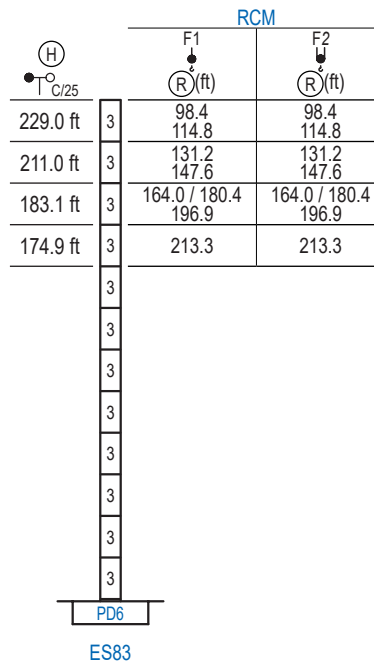
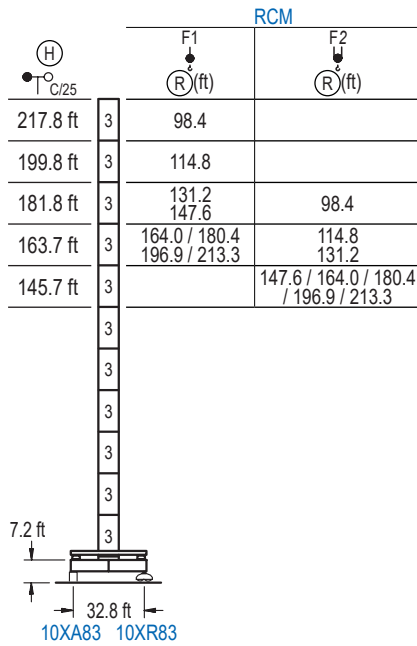
78 ft/min

10XR83

Elevación / Hoist / Levage / Hub / Sollevamento / Тип механизма (подъем)	Abatimiento / Luffing / Relevage / Einziehen / Brandeggio / Складывание	Giro / Slewing / Rotation / Drehbewegung / Rotazione / Поворот	Traslación / Travel / Translation / Verfahrbewegung / Traslazione / Ход	Tensión de alimentación / Operating voltage / Tension de service / Betriebsspannung / Tensione di alimentazione / Напряжение источника питания	Potencia requerida / Required power / Puissance requise / Benötigte Leistung / Potenza richiesta / требуемая мощность
EFU6L-132-250				480 V	245 kVA
EFUP4L-200-250	AFU2-110-85	(4x) GFU-7.5	(4x) TRA-7.5	3 ph 60 Hz	310 kVA
EFU4L-200-250					310 kVA

Opzionale / Optional / En option / Kaufoption / Opzionale / Опционально

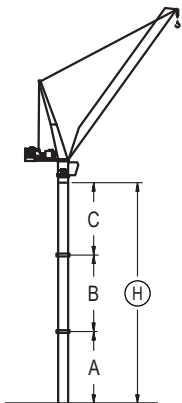
LCL Series



GRÚA ARRIOSTRADA

Braced crane / Grue à entretoisement / Abgespannter Kran / Gru ancorata / Нарациваемый кран

∅ 8.2 ft



RCM (H) T _{C/25}		10XA83					
(R) F1		213.3 / 196.9 / 180.4 / 164.0	147.6 / 131.2	114.8	98.4		
A max		115.5	133.5	151.9	169.9		
A min		115.5	115.5	133.5	133.5		
B max		-	108.3	-	126.3	-	126.3
B min		-	108.3	-	108.3	-	90.2
C max		120.4	156.5	174.5	174.5	174.5	174.5
H max		235.9	290.0	326.1	342.4	344.2	470.5

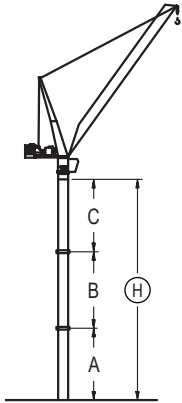
RCM (H) T _{C/25}		ES83					
(R) F1		213.3	196.9 / 180.4 / 164.0	147.6 / 131.2	114.8 / 98.4		
A max		126.6	144.7	162.7	162.7		
A min		108.6	126.6	126.6	126.6		
B max		-	90.2	-	108.3	-	126.3
B min		-	90.2	-	108.3	-	108.3
C max		138.5	120.4	156.5	138.5	156.5	174.5
H max		265.1	337.3	301.2	391.4	319.2	427.5

Otras zonas de viento, alturas superiores, arriostramientos o trepado interno consultar / Other wind zones, additional hook heights, tie frames or internal climbing on request / Autres zones de vent, des hauteurs supplémentaires, entretoisements ou grues avec cage de télescopage intérieure, sur demande / Andere Windzonen, weitere Hakenhöhen, Abspannungen zum Gebäude oder Klettern im Gebäude auf Anfrage / Per zone con velocità del vento particolari, altezze superiori, ancoraggi o rampante in cavedio, consultare il fabbricante / При других ветренных зонах, при большой высоте, привязках к зданию или наращивании крана внутри здания проконсультируйтесь с нами

GRÚA ARRIOSTRADA

Braced crane / Grue à entretoisement / Abgespannter Kran / Gru ancorata / Наращиваемый кран

∅ 8.2 ft



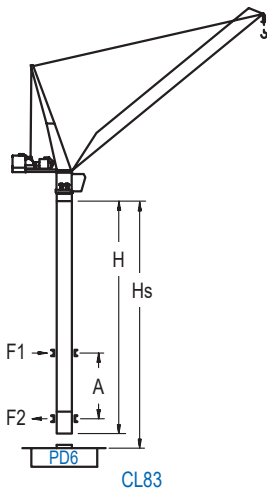
RCM (H) $\frac{\circ}{C/25}$		10XA83					
(R)	F2	213.3 / 196.9 / 180.4 164.0 / 147.6		131.2 / 114.8		98.4	
A max		97.4		115.5		133.5	
A min		97.4		115.5		133.5	
B max		-	-	-	108.3	-	126.3
B min		-	-	-	108.3	-	108.3
C max		102.4	-	156.5	156.5	174.5	174.5
H max		199.8	-	272.0	380.2	308.1	434.4

RCM (H) $\frac{\circ}{C/25}$		ES83							
(R)	F2	213.3		196.9 / 180.4 / 164.0		147.6 / 131.2		114.8 / 98.4	
A max		126.6		144.7		162.7		162.7	
A min		108.6		126.6		126.6		126.6	
B max		-	90.2	-	108.3	-	108.3	-	126.3
B min		-	90.2	-	90.2	-	108.3	-	108.3
C max		138.5	120.4	156.5	138.5	156.5	156.5	174.5	174.5
H max		265.1	337.3	301.2	391.4	319.2	427.5	355.3	481.6

GRÚA TREPADORA

Internal climbing crane / Grue avec cage de télescopage intérieure / Kran mit klettern im Gebäude / Gru in rampante in cavedio / Кран с самоподъемом

∅ 8.2 ft



RCM (H) $\frac{\circ}{C/25}$	F1 (R)(ft)	Hs < 1,640 ft	
		A max (ft)	A min (ft)
205.1 ft (6x D36B + 4x D36A + CLD36A-28)	98.4	80.7	39.4
187.0 ft (5x D36B + 4x D36A + CLD36A-28)	114.8	80.7	36.1
169.0 ft (4x D36B + 4x D36A + CLD36A-28)	131.2 147.6	71.9	32.8
150.9 ft (3x D36B + 4x D36A + CLD36A-28)	164.0 / 180.4 196.9 / 213.3	62.7	36.1

RCM (H) $\frac{\circ}{C/25}$	F2 (R)(ft)	Hs < 1,640 ft	
		A max (ft)	A min (ft)
187.0 ft (5x D36B + 4x D36A + CLD36A-28)	98.4	80.7	32.8
169.0 ft (4x D36B + 4x D36A + CLD36A-28)	114.8 / 131.2 147.6	71.9	32.8
150.9 ft (3x D36B + 4x D36A + CLD36A-28)	164.0 / 180.4 196.9 / 213.3	62.7	39.4

Ref.	∅	h
D36B	8.2	18.0
D36A	8.2	18.0
CLD36A-28	8.2	12.5

Otras zonas de viento, alturas superiores, arriostramientos o trepado interno consultar / Other wind zones, additional hook heights, tie frames or internal climbing on request / Autres zones de vent, des hauteurs supplémentaires, entretoisements ou grues avec cage de télescopage intérieure, sur demande / Andere Windzonen, weitere Hakenhöhen, Abspannungen zum Gebäude oder Klettern im Gebäude auf Anfrage / Per zone con velocità del vento particolari, altezze superiori, ancoraggi o rampante in cavedio, consultare il fabbricante / При других ветренных зонах, при большой высоте, привязках к зданию или наращивании крана внутри здания проконсультируйтесь с нами