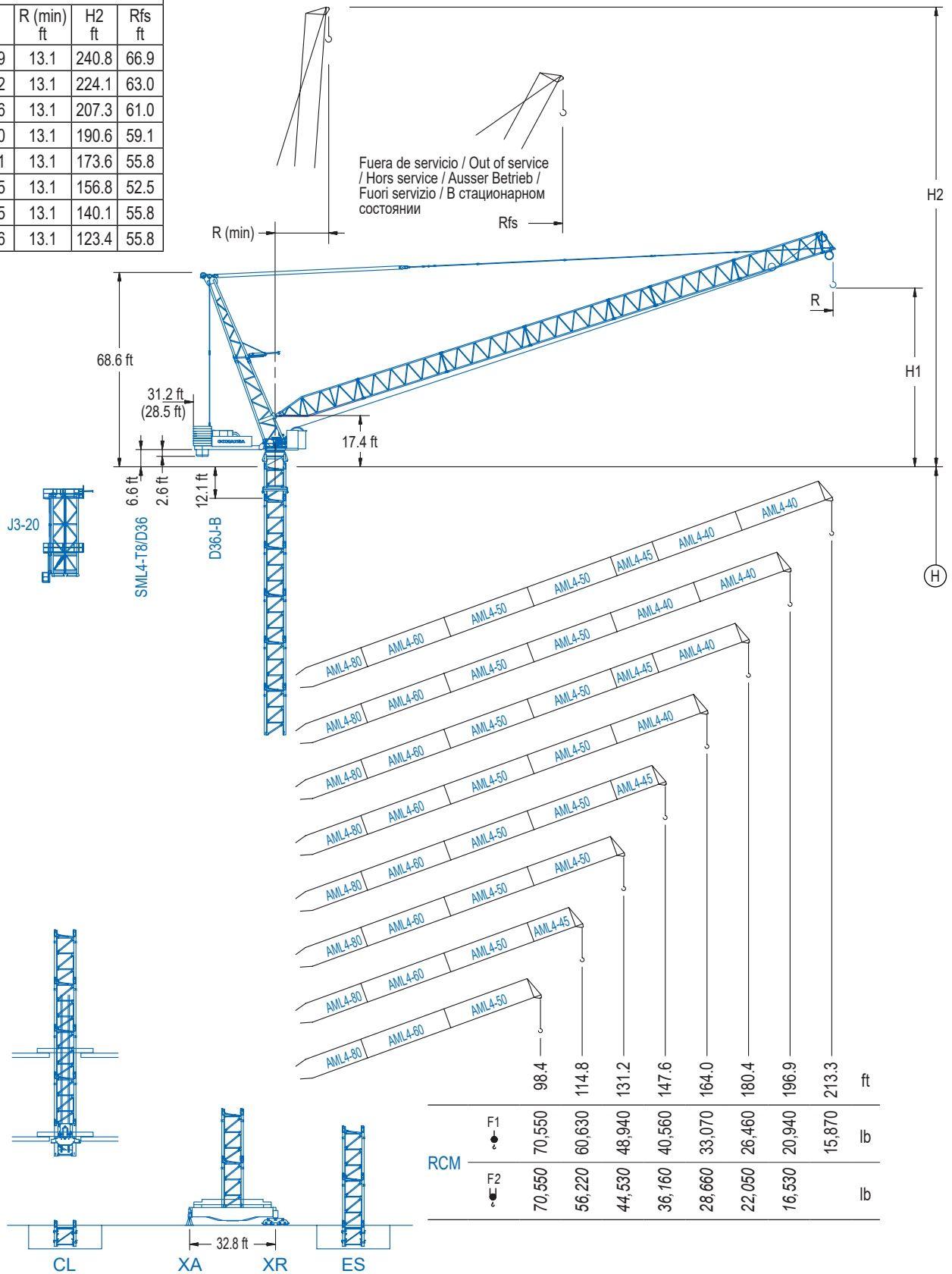


RCM				
R (max) ft	H1 ft	R (min) ft	H2 ft	Rfs ft
213.3	71.9	13.1	240.8	66.9
196.9	68.2	13.1	224.1	63.0
180.4	64.6	13.1	207.3	61.0
164.0	61.0	13.1	190.6	59.1
147.6	57.1	13.1	173.6	55.8
131.2	53.5	13.1	156.8	52.5
114.8	49.5	13.1	140.1	55.8
98.4	45.6	13.1	123.4	55.8



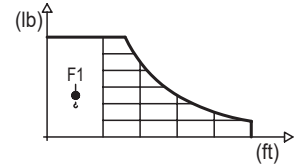
LCL Series

DIAGRAMA DE CARGAS

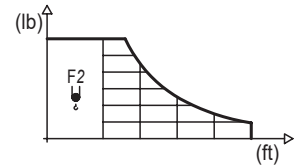
Load chart / Diagramme de charges / Lastdiagramm / Diagramma di carico / Диаграмма распределения нагрузки

RCM

R	F1	Qmax	49.2	65.6	82.0	98.4	114.8	131.2	147.6	164.0	180.4	196.9	213.3	↔ (ft) ↓ (lb)
213.3	90.6	70,550			70,550	59,880	45,350	36,130	29,740	25,020	21,360	18,410	15,870	
196.9	91.9	70,550			70,550	62,850	48,990	39,770	33,200	28,220	24,270	20,940		
180.4	93.5	70,550			70,550	65,370	51,920	42,700	35,980	30,750	26,460			
164.0	95.1	70,550			70,550	67,330	54,480	45,390	38,560	33,070				
147.6	96.1	70,550			70,550	68,500	56,310	47,470	40,560					
131.2	97.4	70,550			70,550	69,670	57,800	48,940						
114.8	100.1	70,550			70,550	60,630								
98.4	98.4	70,550			70,550									



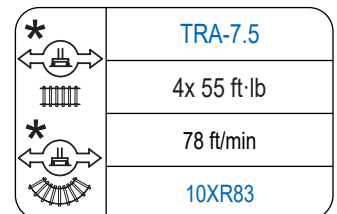
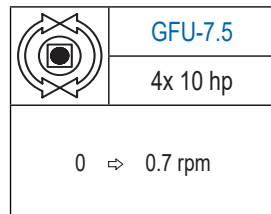
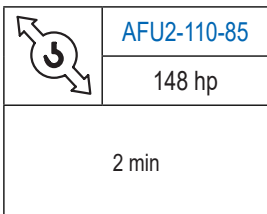
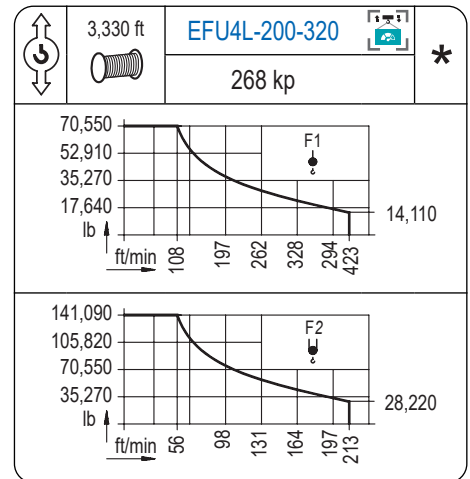
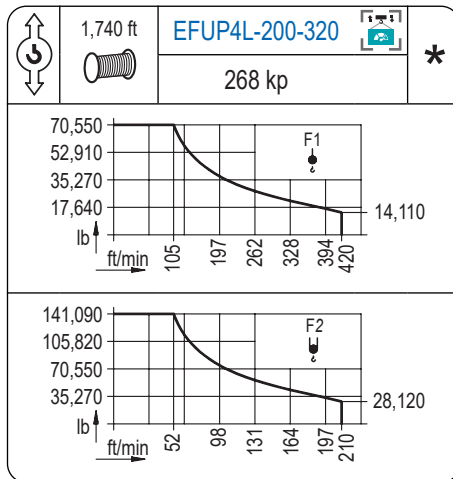
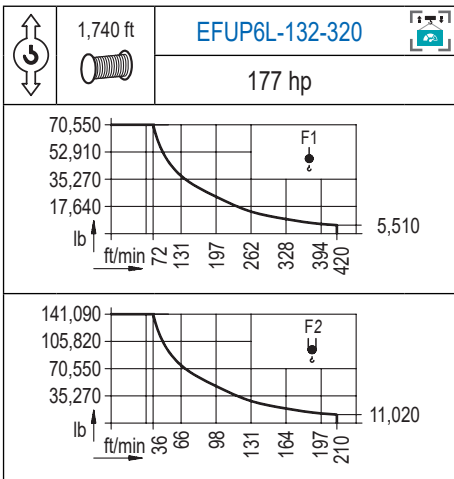
R	F2	Qmax	49.2	65.6	82.0	98.4	114.8	131.2	147.6	164.0	180.4	196.9	↔ (ft) ↓ (lb)
196.9	71.2	92,590		92,590	72,220	53,480	41,730	33,690	27,780	23,260	19,640	16,530	
180.4	58.7	119,050	119,050	100,400	71,940	55,230	44,220	36,400	30,510	25,900	22,050		
164.0	54.1	132,280	132,280	101,410	74,930	58,690	47,690	39,700	33,600	28,660			
147.6	51.2	141,090	141,090	102,760	77,600	61,660	50,640	42,530	36,160				
131.2	51.5	141,090	141,090	105,010	80,140	64,150	52,950	44,530					
114.8	52.2	141,090	141,090	108,530	83,860	67,730	56,220						
98.4	52.8	141,090	141,090	111,330	86,820	70,550							



Datos válidos hasta 262 ft de altura de torre. Para alturas mayores consultar / Valid data up to 262 ft of tower height. Additional heights on request / Données valables jusqu'à 262 ft de la hauteur de tour. Pour des autres hauteurs, merci de nous consulter / Gültige Daten bis zu 262 ft Turmhöhe. Bei mehr Höhe nachfragen / Dati validi per altezza massima 262 ft di torre. Per altezze superiori consultare Comansa / Допустимые данные до 262 фут высоты крана. Для более высоких высот консультируйтесь

MECANISMOS

Mechanisms / Mécanismes / Antriebe / Meccanismi / Механизмы



Elevación / Hoist / Levage / Hub / Sollevamento / Тип механизма (подъем)	Abatimiento / Luffing / Relevage / Einziehen / Brandeggio / Складывание	Giro / Slewing / Rotation / Drehbewegung / Rotazione / Поворот	Traslación / Travel / Translation / Verfahrbewegung / Traslazione / Ход	Tensión de alimentación / Operating voltage / Tension de service / Betriebsspannung / Tensione di alimentazione / Напряжение источника питания	Potencia requerida / Required power / Puissance requise / Benötigte Leistung / Potenza richiesta / требуемая мощность
EFU6L-132-320				480 V	245 kVA
EFUP4L-200-320	AFU2-110-85	(4x) GFU-7.5	(4x) TRA-7.5	3 ph	310 kVA
EFU4L-200-320				60 Hz	310 kVA

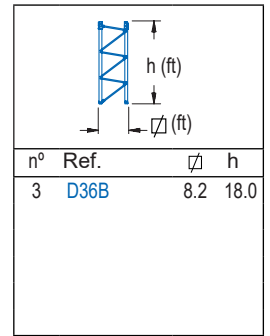
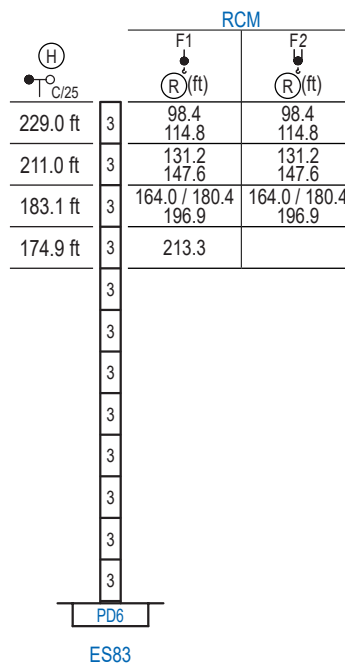
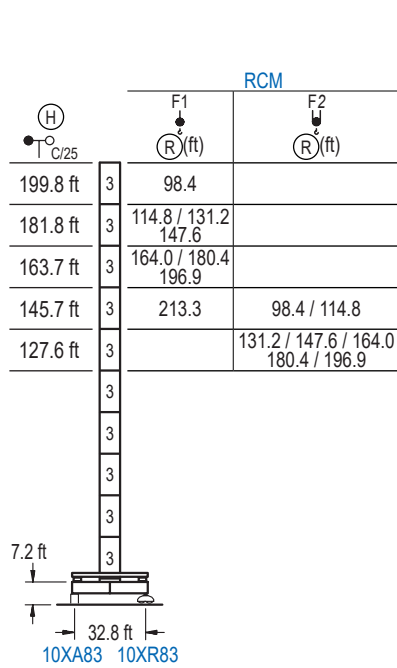
Optional / Option / En option / Kaufoption / Opzionale / Опционально

*

ALTURAS DE TORRE

Tower height / Hauteurs de tour / Turmhöhen / Altezza della torre / Высота башни

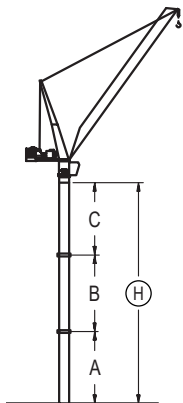
∅ 8.2 ft



GRÚA ARRIOSTRADA

Braced crane / Grue à entretoisement / Abgespannter Kran / Gru ancorata / Нарращиваемый кран

∅ 8.2 ft



RCM (H) C/25		10XA83						
(R) F1		213.3		196.9 / 180.4 / 164.0		147.6 / 131.2 / 114.8		98.4
A max		97.4		115.5		133.5		151.9
A min		97.4		115.5		115.5		115.5
B max		-	-	-	-	-	108.3	126.3
B min		-	-	-	-	-	108.3	108.3
C max		102.4	-	138.5	-	156.5	156.5	174.5 / 174.5
H max		199.8	-	253.9	-	290.0	398.3	327.8 / 452.4

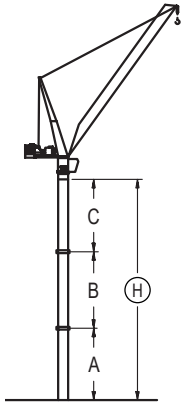
RCM (H) C/25		ES83						
(R) F1		213.3		196.9 / 180.4 / 164.0		147.6 / 131.2		114.8 / 98.4
A max		126.6		144.7		162.7		162.7
A min		108.6		126.6		126.6		126.6
B max		-	90.2	-	108.3	-	108.3	126.3
B min		-	90.2	-	90.2	-	108.3	108.3
C max		138.5	120.4	156.5	138.5	156.5	156.5	174.5 / 174.5
H max		265.1	337.3	301.2	391.4	319.2	427.5	355.3 / 481.6

Otras zonas de viento, alturas superiores, arriostramientos o trepado interno consultar / Other wind zones, additional hook heights, tie frames or internal climbing on request / Autres zones de vent, des hauteurs supplémentaires, entretoisements ou grues avec cage de télescopage intérieure, sur demande / Andere Windzonen, weitere Hakenhöhen, Abspannungen zum Gebäude oder Klettern im Gebäude auf Anfrage / Per zone con velocità del vento particolari, altezze superiori, ancoraggi o rampante in cavedio, consultare il fabbricante / При других ветренных зонах, при большой высоте, привязках к зданию или наращивании крана внутри здания проконсультируйтесь с нами

GRÚA ARRIOSTRADA

Braced crane / Grue à entretoisement / Abgespannter Kran / Gru ancorata / Наращиваемый кран

∅ 8.2 ft



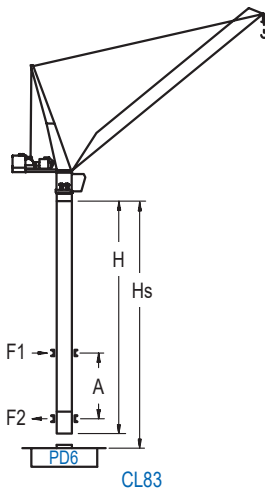
RCM (H) C/25		10XA83			
(R) F2 ↓	196.9 / 180.4	164.0 / 147.6 / 131.2		114.8 / 98.4	
A max	79.4	79.4		97.4	
A min	79.4	79.4		97.4	
B max	-	-	-	-	90.2
B min	-	-	-	-	90.2
C max	66.3	-	84.3	-	138.5 / 138.5
H max	145.7	-	163.7	-	235.9 / 326.1

RCM (H) C/25		ES83			
(R) F2 ↓	196.9 / 180.4 / 164.0	147.6 / 131.2		114.8 / 98.4	
A max	144.7	162.7		162.7	
A min	126.6	126.6		126.6	
B max	-	108.3	-	108.3	126.3
B min	-	90.2	-	108.3	108.3
C max	156.5	138.5	156.5	156.5	174.5 / 174.5
H max	301.2	391.4	319.2	427.5	355.3 / 481.6

GRÚA TREPADORA

Internal climbing crane / Grue avec cage de télescopage intérieure / Kran mit klettern im Gebäude / Gru in rampante in cavedio / Кран с самоподъемом

∅ 8.2 ft



RCM (H) C/25	F1 (R) (ft)	Hs < 1,640 ft	
		A max (ft)	A min (ft)
169.0 ft (4x D36B + 4x D36A + CLD36A-28)	98.4 / 114.8 131.2 / 147.6	71.9	32.8
150.9 ft (3x D36B + 4x D36A + CLD36A-28)	164.0 / 180.4 196.9 / 213.3	62.7	36.1

RCM (H) C/25	F2 (R) (ft)	Hs < 1,640 ft	
		A max (ft)	A min (ft)
169.0 ft (4x D36B + 4x D36A + CLD36A-28)	98.4 / 114.8 131.2 / 147.6	71.9	32.8
150.9 ft (3x D36B + 4x D36A + CLD36A-28)	164.0 / 180.4 196.9	62.7	36.1

Ref.	∅	h
D36B	8.2	18.0
D36A	8.2	18.0
CLD36A-28	8.2	12.5

Otras zonas de viento, alturas superiores, arriostramientos o trepado interno consultar / Other wind zones, additional hook heights, tie frames or internal climbing on request / Autres zones de vent, des hauteurs supplémentaires, entretoisements ou grues avec cage de télescopage intérieure, sur demande / Andere Windzonen, weitere Hakenhöhen, Abspannungen zum Gebäude oder Klettern im Gebäude auf Anfrage / Per zone con velocità del vento particolari, altezze superiori, ancoraggi o rampante in cavedio, consultare il fabbricante / При других ветренных зонах, при большой высоте, привязках к зданию или наращивании крана внутри здания проконсультируйтесь с нами