

TOWER CRANES FOR ALL KINDS OF PROJECTS



COMANSA

COMANSA IS A MULTINATIONAL
COMPANY SPECIALIZED IN TOWER
CRANES AND OFFERS ITS
SERVICES GLOBALLY



OVER 60 YEARS OF EXPERIENCE WORLDWIDE

With over 60 years of experience in the design, manufacturing, supply, and support of tower cranes, along with the trust of numerous customers worldwide, **COMANSA** is recognized as one of the leading specialists in the industry. A pioneering manufacturer in the development of modular and Flat-top designs, **COMANSA** builds upon the renowned Linden system, which revolutionized the sector in the 1970s.



COMMITTED TO LIFTING EVOLUTION

Through its commitment to this concept and the subsequent development of the original design, **COMANSA has been a driving force** in the creation of the **new Modular System** and **Flat-Top tower cranes**, a strategy that, over time, has been adopted by the rest of the industry due to its significant advantages for customers.

Customer commitment and a dedication to developing innovative and competitive solutions are the core values of the team that makes up COMANSA.

COMANSA

KEY FIGURES



**HEADQUARTERS IN
SPAIN, THE UNITED
STATES, AND CHINA.**

**SALES BRANCHES IN
FRANCE, SINGAPORE,
AUSTRALIA, AND INDIA**



+70 COUNTRIES

WITH COMMERCIAL AND
SERVICE COVERAGE



+500 EMPLOYEES

WORLDWIDE



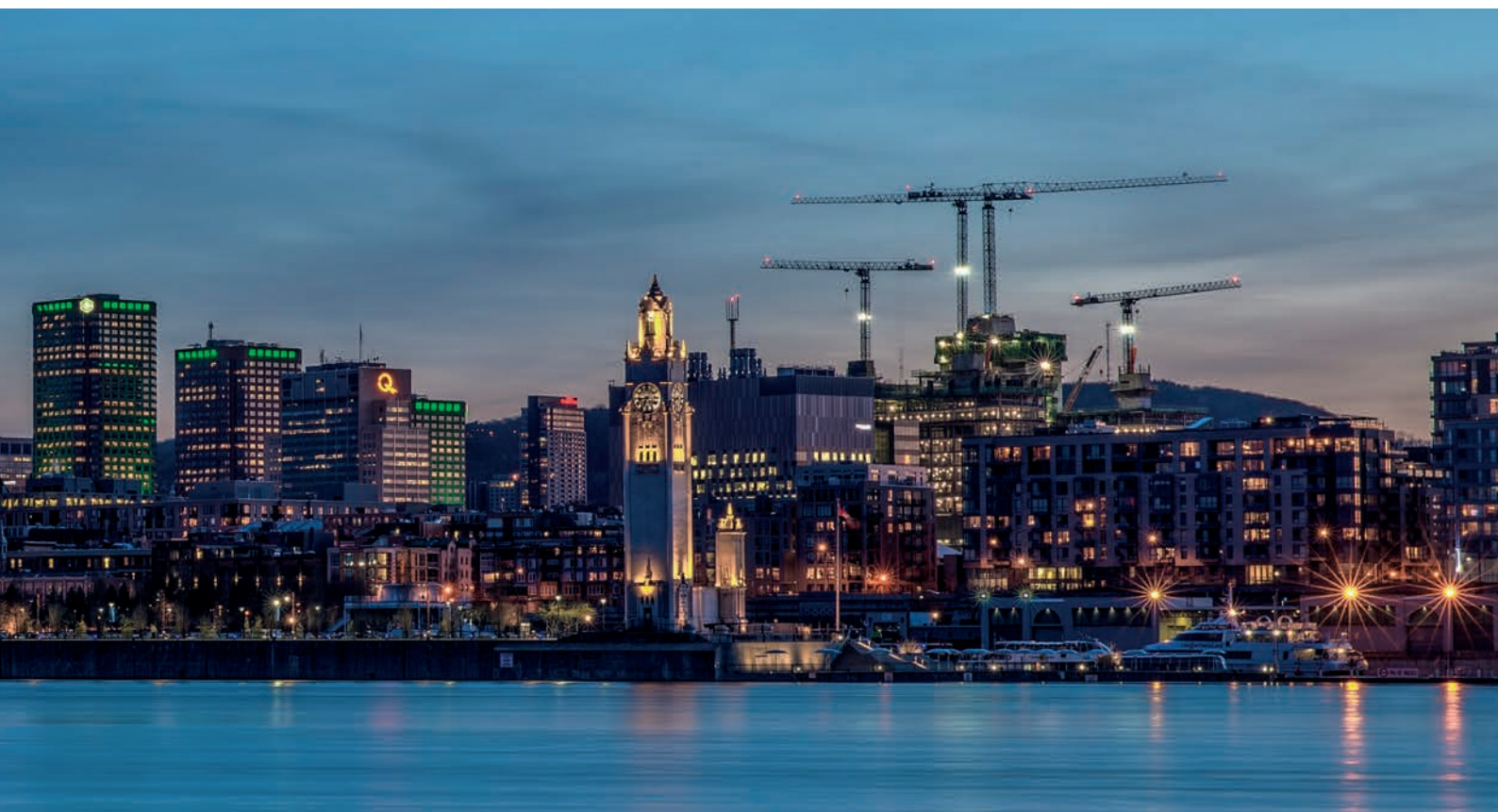
+20,000 CRANES

MANUFACTURED



+100 MILL. €

BUSINESS TURNOVER



COMANSA AROUND THE WORLD

From its own headquarters in Spain, the United States, and China, as well as its sales branches in France, Singapore, Australia, and India, **COMANSA** serves its customers and handles all technical, commercial, and after-sales enquiries worldwide.

HEADQUARTERS

COMANSA's

headquarters have been located in Huarte - Pamplona since the company's foundation.

The facilities include a production center dedicated to manufacturing the entire LC range, as well as the central services of the group.

From its headquarters in Spain, **COMANSA** provides commercial support and after-sales service for Europe, Africa, South America, and the Middle East.

N. AMERICA

COMANSA has had a direct presence in North America since 2002. From its offices in Pineville, near Charlotte NC, Dallas TX, Seattle WA, **COMANSA** provides commercial and service coverage to its customers in the United States and Canada.

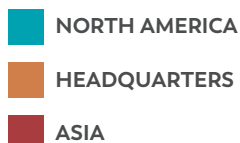
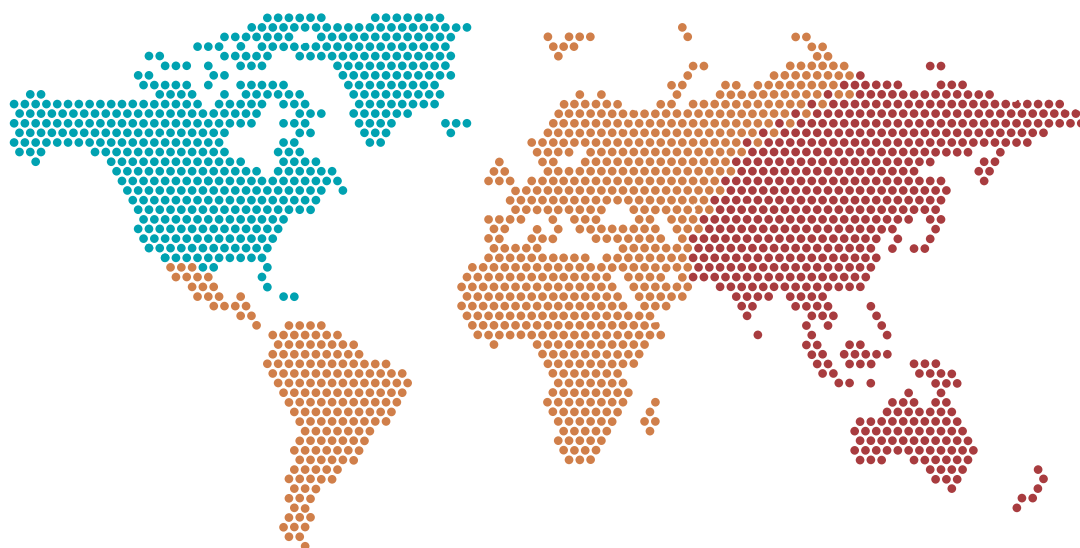
Its facilities include training rooms and a large warehouse for structural components and spare parts, ensuring fast and efficient service across the region.

ASIA

In 2006, the Hangzhou factory in China opened its doors, and in 2015, its facilities were renovated and expanded.

This production center manufactures the CM range of cranes, which are distributed across Asia, South America, Africa, and the Middle East.

From this modern facility, **COMANSA** provides commercial and after-sales support to the Asian and Oceanian markets.



EUROPEAN DESIGN GLOBAL MANUFACTURING

COMANSA'S R&D DEPARTMENT IS BASED AT ITS HEADQUARTERS IN SPAIN.

It is composed of a large and experienced team of industrial, mechanical, and electrical engineers who have a deep understanding of market needs and develop applications tailored to customer requirements.



Aware of market demands, **COMANSA** has implemented a flexible manufacturing management system in its production plants in Huarte-Pamplona (Spain) and Hangzhou (China).

COMANSA's modern factories have been designed to adopt the Lean Manufacturing system, which allows:

- Continuous adaptation and optimization of production processes
- Reduced delivery times
- Agile customer response, regardless of their location, anywhere in the world





COMANSA'S PRODUCTION PROCESS IS HIGHLY TECHNOLOGICAL



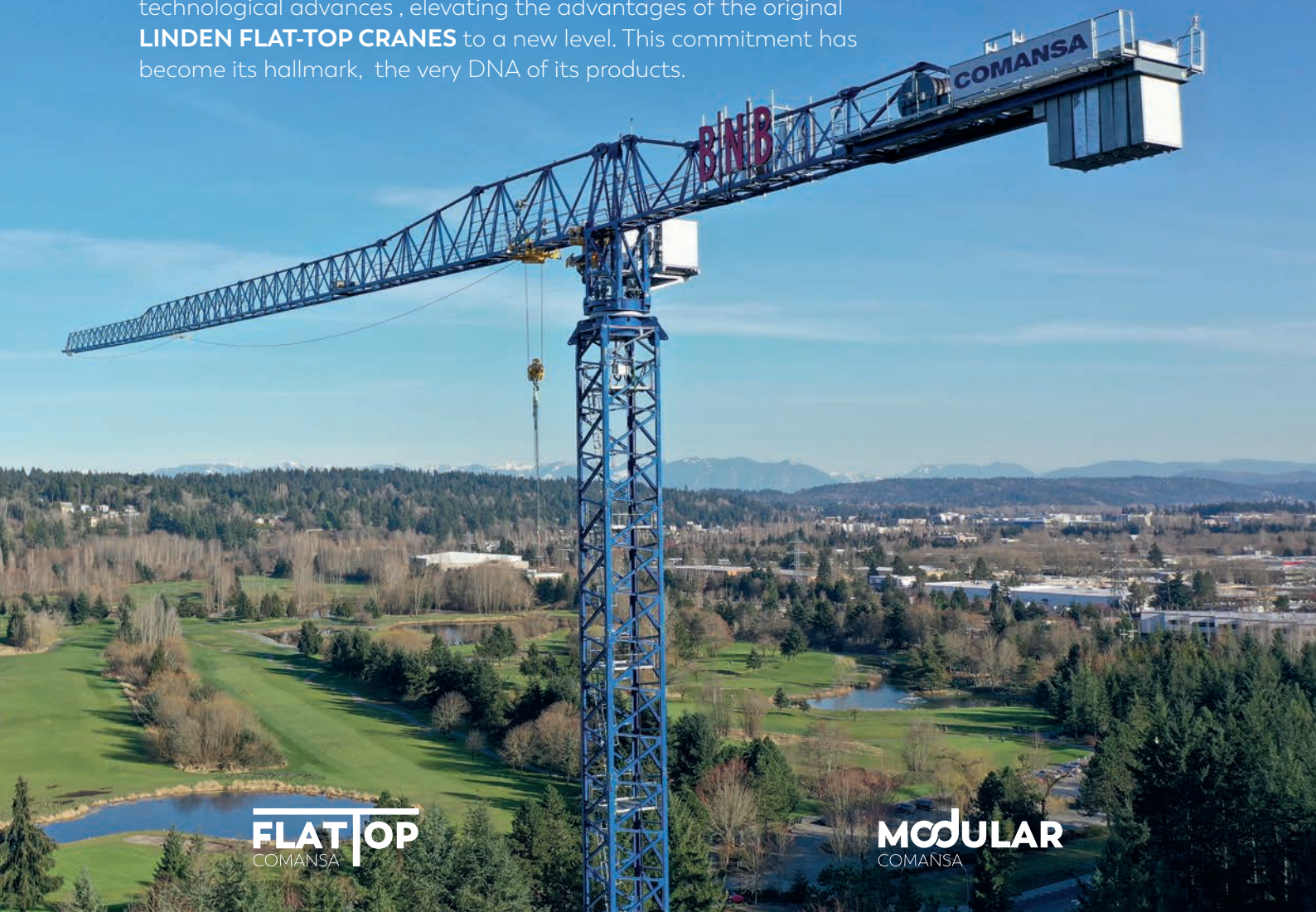
The combined use of highly skilled professionals and robotic welding, along with high-precision CNC machinery and a rigorous quality control process at every stage of manufacturing, ensures the optimal transformation of raw materials into a high-quality product with an exceptional finish.



COMANSA TECHNOLOGY

01 - THE LINDEN LEGACY

In recent years, **COMANSA** has made a significant effort toward technological advances, elevating the advantages of the original **LINDEN FLAT-TOP CRANES** to a new level. This commitment has become its hallmark, the very DNA of its products.



FLAT TOP
COMANSA

MODULAR
COMANSA

THE LINDEN LEGACY

ORIGINAL FLAT-TOP DESIGN

- Fast, easy, and safe assembly thanks to the Flat-Top design
- Reduced material usage and assembly time on construction sites with overlapping cranes
- Extended crane lifespan, as the Flat-Top design minimizes structural fatigue

MODULARITY

- High versatility thanks to multiple configuration options
- Flexible assembly to adapt to the specific conditions of each project
- Optimized investment: Different models share the same structural elements

COMANSA TECHNOLOGY

02 - APPLICATIONS AND FUNCTIONALITIES

Following this same philosophy and aiming for the same customer benefits, **COMANSA** has continued to develop the Linden system, adding new designs and applications that enhance the performance of its cranes, some of which clearly distinguish **COMANSA** in the market.



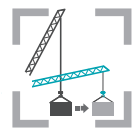
CUBE CAB

- Maximum productivity and comfort
- Optimal view of the load and the work area
- Better control over operations and the site
- Spacious and comfortable interior
- Fully equipped



DOUBLE TROLLEY

- Optimized load-chart for Flat Top cranes:
- Single trolley: Greater speed and jib-end load
- Double trolley: Maximum load capacity
- The switchover is done very quickly using the operator's controls



LEVEL LUFFING

- Coordination between luffing and hoist movements
- Enables to move a load horizontally, automatically keeping it at the same height
- Standard on practically all luffing-jib cranes



POWER LIFT

- Standard on all flat-top cranes
- Improves the load diagram by 10%
- Works at a reduced speed, increasing the loading capacity for jobs that require it
- This system is activated by the crane operator



EFFI PLUS

- Increases significantly the hoisting and lowering speeds for light loads
- No increased power or consumption
- Shortens work cycles
- Increases the productivity of the crane
- Applied to hoist mechanisms between 24 and 132 kW



ECO MODE

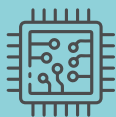
- Work in progress – still not available in the cranes
- Crane reduced power consumption, saving energy and lowering costs
- Environmentally friendly helping to conserve resources
- Improved machine durability by minimizing equipment degradation

COMANSA TECHNOLOGY

03 - CRANE MATE

CRANE MATE is **COMANSA'S fleet management** and crane monitoring system. Thanks to this cutting-edge communications technology, we can know in real time technical information, location, alerts, and even data related to the productivity and maintenance of the crane.

HARDWARE



A complete pre-installed turnkey kit, consisting of:

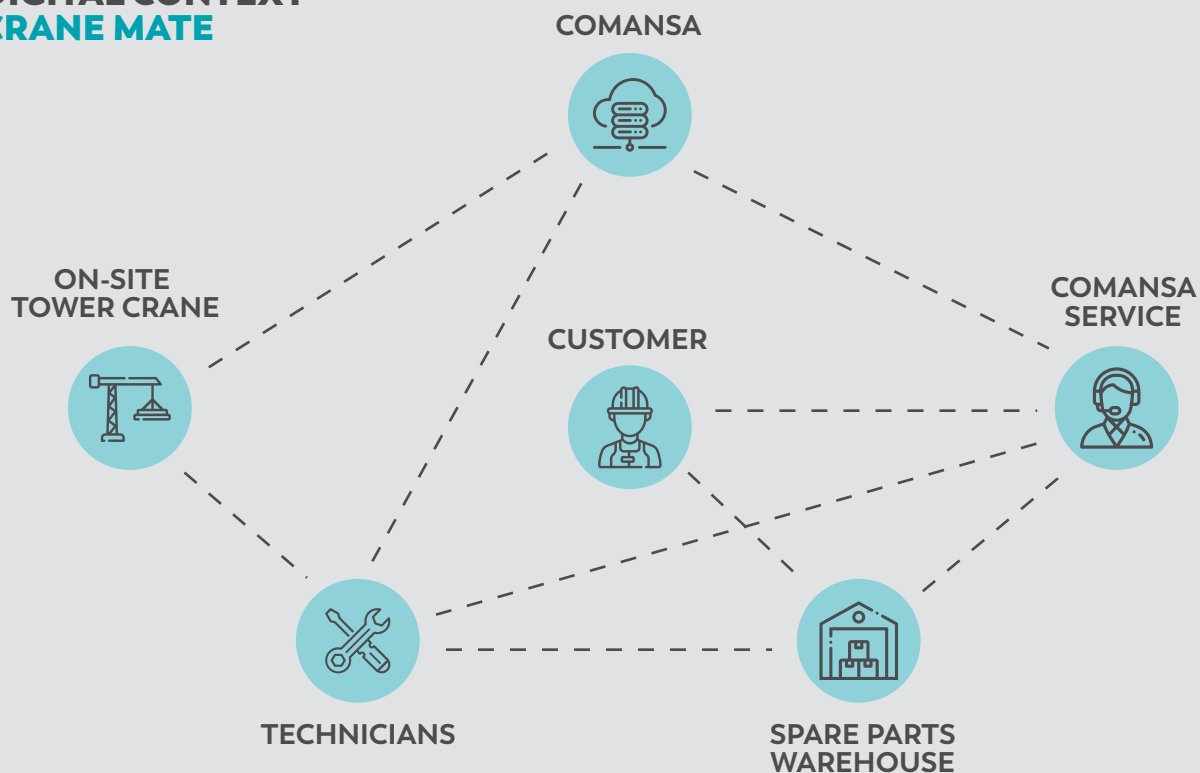
- Industrial PC (1)
- Wifi Router (1)
- PLC (1)
- I/O Moduls

SOFTWARE



An online access platform with restricted and secured access. Visualisation of machine parameters and functionalities and other useful services for the customer

DIGITAL CONTEXT CRANE MATE



CRANE MATE FEATURES



More than 100 tower crane parameters real time monitoring



Alert configuration: wind speed, load limiters, load moment, etc.



Historical data logging



Event messages report



Worldwide location of the tower crane position (GPS)



Registration of rental periods and tasks for cranes and projects



Operating and idle times control



Customized web portal and much more...



Lifting capacity tables, load cycles visualization



COMANSA GROUP SERVICE

COMPETITIVE AND CUSTOM-TAILORED FOR THE CUSTOMER

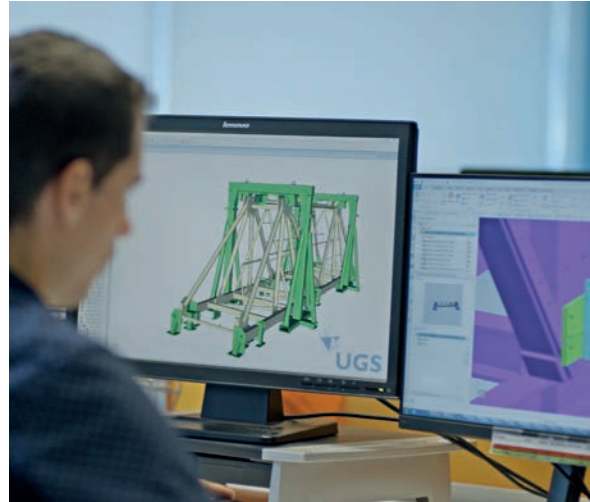
COMANSA's customers work under pressure and with tight deadlines. Understanding the demands of construction projects, COMANSA dedicates its entire team to supporting the customer.



COMANSA offers its customers more than just a service, it provides a solid support system they can rely on, whatever their requirements may be. Whether it's technical training, spare parts supply, custom solution design, crane assembly assistance, or optimizing crane resources on-site, COMANSA is there to help.

**FROM R&D TO AFTER-SALES,
THE ENTIRE COMANSA TEAM IS
DEDICATED TO OUR CUSTOMERS.**





Our extensive experience in crane installation and maintenance, working across multiple applications, combined with our engineering capabilities and hands-on field service with numerous customers, allows us to provide fully customized, complete lifecycle services. From initial concept and pre-engineering to equipment renewal, we support our customers at every stage.



PRE-SALES ENGINEERING SERVICE

- Crane design optimization
- Crane configuration adapted to local restrictions
- Multi-crane project design configuration
- Design of special components and accessories
- Force and reaction calculations adapted to wind zones and other site conditions
- Project planning
- Lifting planning support
- Logistics scheduling
- Lifting method declaration

AFTER-SALES ENGINEERING SERVICE

- Crane relocation
- Remote assistance
- Online troubleshooting support
- Spare parts management
- Certification management
- Standard technical support and special documentation
- Retrofits and upgrade kits
- On-site support and supervision
- Dismantling support

COMANSA
CRANES

THE MOST COMPLETE RANGE
OF TOWER CRANES FOR ALL TYPES
OF CONSTRUCTION PROJECTS



BRIDGES



HIGH RISE
BUILDINGS



DAMS



SHIPYARDS

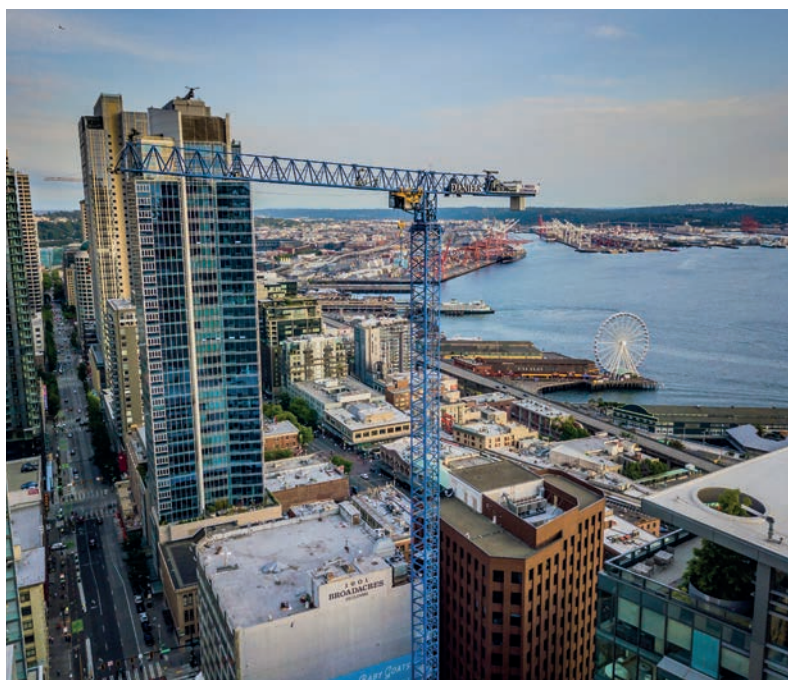


STADIUMS



POWER
PLANTS

COMANSA offers one of the most complete tower crane ranges on the market, featuring a wide variety of models and versions designed to adapt to all types of construction projects, including residential, commercial, infrastructure, industrial, mining, energy, shipbuilding, and more.

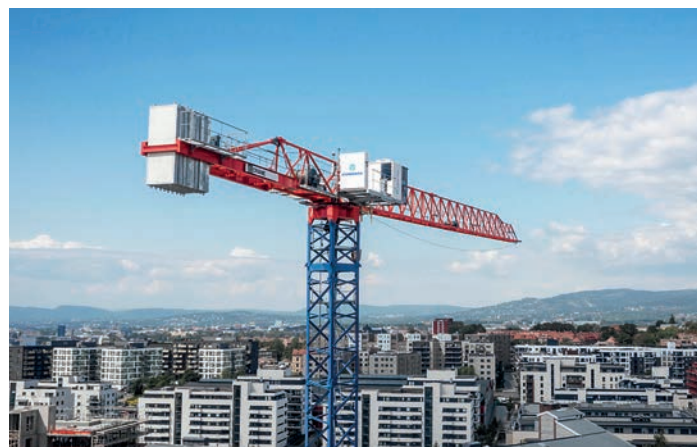


For more than 60 years, thousands of **COMANSA** tower cranes have been deployed in construction projects worldwide. The experience gained from each of these projects enables **COMANSA** to provide effective solutions to the challenges that arise in even the most complex construction sites.

COMANSA FLAT-TOP CRANES

All **COMANSA** horizontal jib cranes have a Flat-Top design, without struts, which accelerates assembly and provides a significant advantage on job sites where multiple cranes operate simultaneously.

The maximum load capacity of COMANSA Flat-Top cranes ranges from 5 to 90 tons.



- Strutless Design: Ensures easy, fast, and safe assembly
- Long Lifespan: Built with high-quality, durable materials
- High Versatility: Offers multiple configuration options
- Modular Design: Enables adaptable assembly to suit each project's specific conditions
- Double Trolley System: Optimizes the load chart for Flat-Top cranes
- PowerLift System: Increases the load capacity by 10%.
- CUBE Cabin: Spacious and comfortable interior with optimal visibility of the load and work area

COMANSA LUFFING JIB CRANES

Luffing jib cranes are the ideal solution for job sites with space limitations, whether due to the presence of other cranes, nearby buildings, or regulations restricting air rights in certain areas.

A luffing jib crane is characterized by the ability to raise and lower its boom, allowing it to reduce the slewing radius. All **COMANSA** luffing jib cranes are equipped with frequency variation, ensuring smooth and safe movements. **COMANSA** offers two types of luffing jib cranes:

01.- STANDARD LUFFING JIB CRANES

Equipped with variable frequency control in the slewing, hoisting, and luffing mechanisms, with maximum load capacities ranging from 8 to 64 tons.



COMANSA'S LUFFING JIB CRANE range offers maximum load capacities ranging from 8 to 64 tons.

- **Level Luffing System:** Ensures precise coordination between luffing and lifting movements
- **Horizontal Load Movement:** Automatically keeps the load at a constant height during luffing
- **Long Lifespan:** high-quality and long-lasting materials
- **CUBE Cabin:** Spacious and comfortable interior with optimal visibility of the load and work area

02.- HYDRAULIC LUFFING JIB CRANE

Featuring a hydraulic luffing mechanism for enhanced performance, with a maximum load capacity of 16 tons.



COMANSA HYDRAULIC LUFFING CRANE

- **Minimum working radius of 4 m**
- "CFM" type section that joins the boom with the counter-jib and receives **the thrust of the cylinder**
- **Oscillating counter-jib along with the boom.** Fixed counterweights (do not rotate)
- **Long Lifespan:** high-quality and long-lasting materials
- **CUBE Cabin:** Spacious and comfortable interior with optimal visibility of the load and work area

SUSTAINABILITY, CODE OF ETHICS, AND ENVIRONMENT

COMANSA is committed to advancing sustainability by upholding ethical values and practicing responsible business conduct.

The company is committed to integrating social and environmental initiatives into its business activities, with the firm belief that this vision strengthens both the company itself and customer loyalty.

In this context, the implementation of best practices, particularly the adoption of Environmental and Occupational Safety Management Systems in accordance with ISO 14001 and ISO 45001 standards, has not only ensured compliance with regulations but also led to a significant reduction in natural resource consumption and workplace accident rates.

VALUES

The Group is committed to the following operating principles to fulfill its Mission:

Corporate social responsibility values:

- Fundamental rights and freedoms
- Social principles and rights
- Equal opportunities and mutual respect
- Health and safety

Corporate values:

- Integrity and ethics
- Management style: profesional collaborative, transparent, and participatory
- Accountable leadership
- Transparent communication
- Employee development



CODE OF ETHICS

It reflects the company's commitment to acting with integrity, responsibility, and transparency, in full compliance with the Law and in accordance with high ethical and moral values.

■ Employees

Respect for rights and freedoms, equal opportunities, integrity and ethics, clear and open human relations, employee development

■ Society

Responsible business ethics, social development through job creation, protection of natural resources, cutting-edge technology

■ Customers

Integrity, proactivity, and transparency

■ Suppliers

Transparent relationships, respect and integrity

■ Competitors

Fair and ethical competition

■ Shareholders

Protection of the Group's assets, legal compliance, value creation through technological Leadership, transparency and accuracy and responsible use of resources

BUREAU VERITAS CERTIFICATION FOR CRIMINAL COMPLIANCE MANAGEMENT

As a sign of this commitment, in April 2021, COMANSA obtained Bureau Veritas certification, confirming that the company has implemented a Criminal Compliance Management System in accordance with the UNE 19601:2017 standard, the benchmark for best practices in compliance management systems.

ENVIRONMENT

COMANSA carries out all its activities with a strong commitment to product quality, environmental protection, and compliance with applicable legal requirements, while continuously improving its Environmental Management System.

Additionally, the company fully assumes its responsibility as a tower crane designer and manufacturer.

PROJECTS

The projects that have had the greatest impact on reducing environmental impact include:

- Creation of the Energy Efficiency Improvement Committee
- Installation of photovoltaic energy, leading to a reduction in greenhouse gas emissions (GHG)
- Installation of a water treatment plant at the Spanish facility, reducing hazardous waste
- Investments to minimize the environmental impact caused by discharges at the Chinese plant

ACHIEVEMENTS

- Reduction of hazardous waste year over year
- Renewable Energy with over 50% self-consumption thanks to the photovoltaic installation at Comansa's facilities
- Eco-Design: Reducing environmental impact by controlling and minimizing consumption and waste generation, while embracing Eco-Design to create a more sustainable product in terms of maintenance and usage



COMMITTED TO LIFTING EVOLUTION

NORTH AMERICA

Pineville (NC) - USA
+1 800 589 7980
sales@lccranes.com

INTERNATIONAL HQ

Huarte - Spain
+34 948 33 50 20
sales@comansa.com

ASIA

Hangzhou - P.R. China
+86 571 8299 5555
sales@comansa.cn

COMANSA.COM

